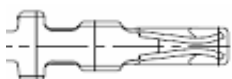


EDCON-COMPONENTS

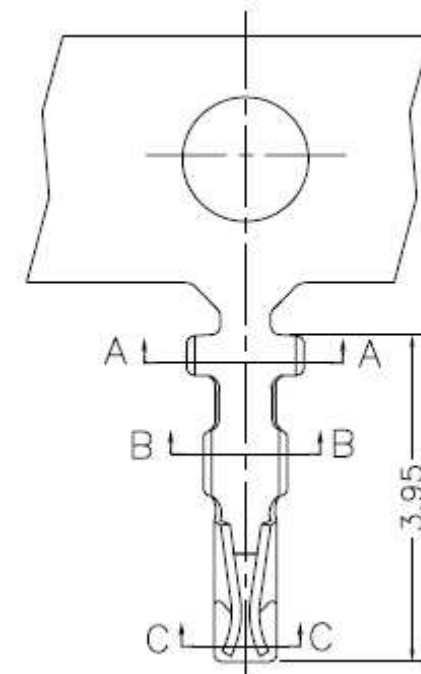
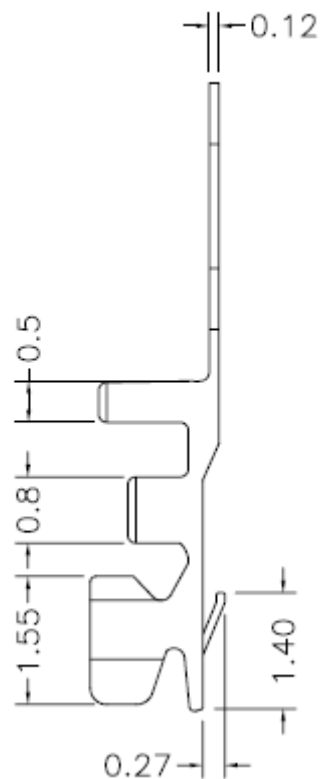
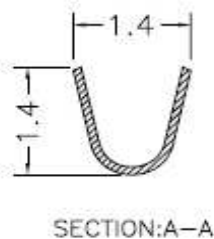
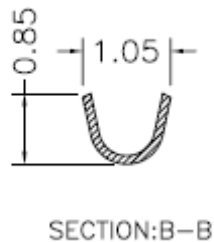
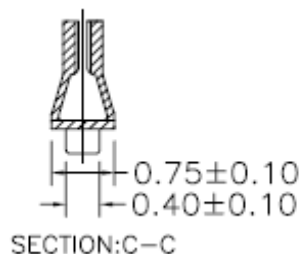


Specifications

Voltage Rating: 50VAC /DC
Current Rating 0,5AC / DC
Operating Temperature . -25°C ~ +85°C
Contact Resistance 20m Ω Max.
Withstanding Voltage 500V AC/minute
Insulation Resistance 100M Ω Min.

Material Phosphor Bronze
Wire Size: AWG28 ~AWG32
Insulation Size Section A 0,8mm (max.)

Drawing (dimensions all into mm)

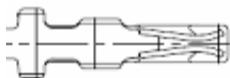


Terminal for Housing Wire to Board Serie Pitch 1,00mm

Part No.: **T68L023**

DRW:	Jason	CHKD	Wilson	MATL:	Wilson	TOLERANCE	Mason	DATE	02.05.2009
APPD:	Schumi			FINISH	Jamy		Sheet No.	1 from 3	Customer:

EDCON-COMPONENTS



Ordering Informations

Serie	Terminal	Term. Mat.	C-Plating	ROHS	Packing				
T68L023	F	PB	TN	R	TR153				

F= Female	PB= Phosphor Bronze	TN= TIN Plated Standard	R= ROHS Conform N= NON ROHS Conform	TR= Tape / Reel 15000
		GF= Gold Flash / Tin		
		GA= 3μ Gold		
		GB= 5μ Gold		
		GC= 10μ Gold		
		GD= 15μ Gold		
		GE= 30μ Gold		
		SA= 3μ Sel. Gold		
		GB= 5μ Sel. Gold		
		GC= 10μ Sel. Gold		
		GD= 15μ Sel. Gold	GE= 30μ Sel. Gold	

**Terminal for Housing Wire to
Board Serie Pitch 1,00mm**
Part No.: **T68L023**

DRW:	Jason	CHKD	Wilson	MATL:	Wilson	TOLERANCE	Mason	DATE	02.05.2009	Customer:
APPD:	Schumi			FINISH	Jamy		Sheet No.	3 from 3		