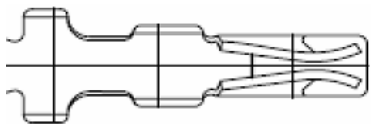


EDCON-COMPONENTS

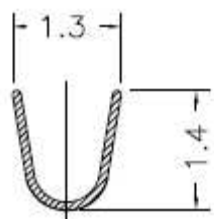
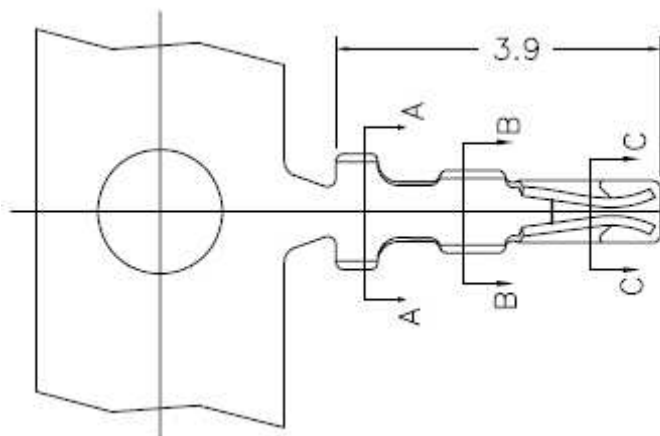


Specifications

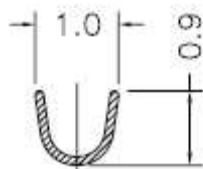
Voltage Rating: 50VAC /DC
 Current Rating 1AC / DC
 Operating Temperature . -25°C ~ +85°C
 Contact Resistance 20m Ω Max.
 Withstanding Voltage 500V AC/minute
 Insulation Resistance 100M Ω Min.

Material Phosphor Bronze

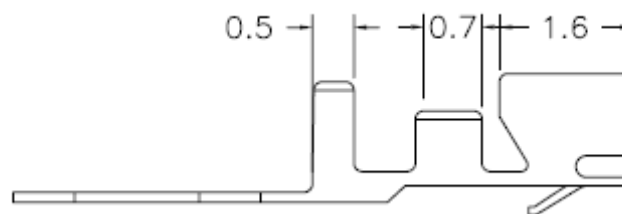
Drawing (dimensions all into mm)



SECTION A-A



SECTION B-B



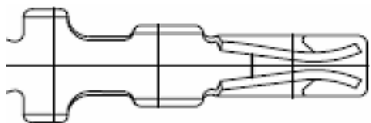
SECTION C-C

Terminal for Housing Wire to Board Serie Pitch 1,00mm

Part No.: **T68L005**

DRW:	Jason	CHKD	Wilson	MATL:	Wilson	TOLERANCE	Mason	DATE	02.05.2009	Customer:
APPD:	Schumi			FINISH	Jamy		Sheet No.	1 from 3		

EDCON-COMPONENTS



Ordering Informations

Serie	Terminal	Term. Mat.	C-Plating	ROHS	Packing				
T68L005	F	PB	TN	R	BU				

F= Female	PB= Phosphor Bronze	TN= TIN Plated Standard	R= ROHS Conform	BU= Bulk (Standard)
		GF= Gold Flash / Tin	N= NON ROHS Conform	
		GA= 3µ Gold		
		GB= 5µ Gold		
		GC= 10µ Gold		
		GD= 15µ Gold		
		GE= 30µ Gold		
		SA= 3µ Sel. Gold		
		GB= 5µ Sel. Gold		
		GC= 10µ Sel. Gold		
		GD= 15µ Sel. Gold	GE= 30µ Sel. Gold	

Terminal for Housing Wire to Board Serie Pitch 1,00mm

Part No.: **T68L005**

DRW:	Jason	CHKD	Wilson	MATL:	Wilson	TOLERANCE	Mason	DATE	02.05.2009	Customer:
APPD:	Schumi			FINISH	Jamy		Sheet No.	3 from 3		

www.edcon-components.com

email: info@edcon-components.com