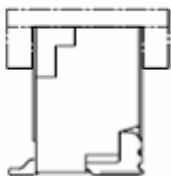


EDCON-COMPONENTS

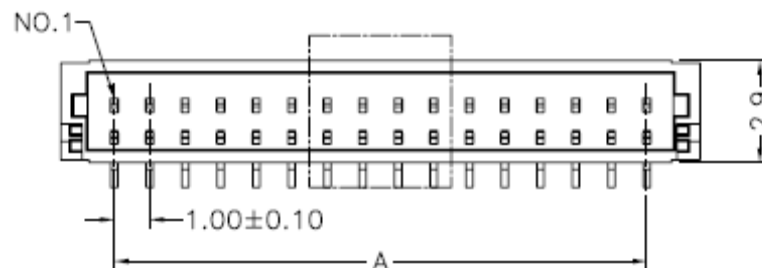


Specifications

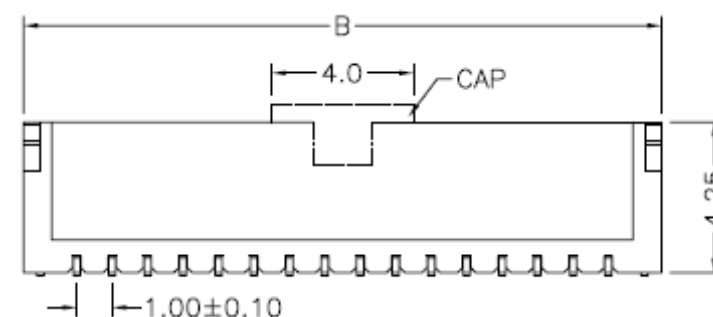
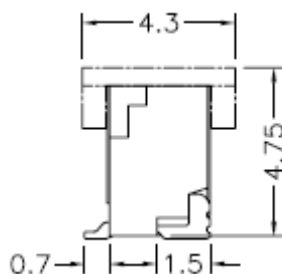
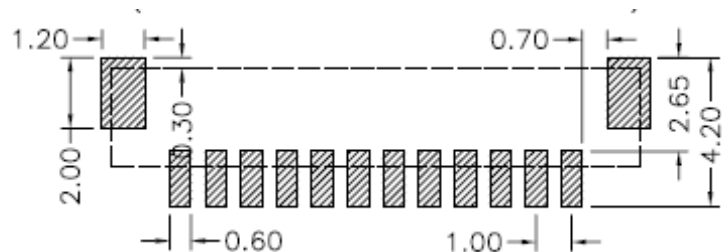
Voltage Rating: 50VAC /DC
 Current Rating 1AC / DC
 Operating Temperature . -25°C ~ +85°C
 Contact Resistance 20m Ω Max.
 Withstanding Voltage 500V AC/minute
 Insulation Resistance 100M Ω Min.

Material Insulator: High temperature Plastic UL94V-0
 Material Pin Phosphor Bronze
 Pin Plating: AU or SN over NI

Drawing (dimensions all into mm)



PCB Layout

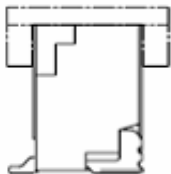


**Wire to Board Serie Pitch
1,00mm**

Part No.: **T68L001**

DRW:	Jason	CHKD	Wilson	MATL:	Wilson	TOLERANCE	Mason	DATE	02.04.2009
APPD:	Schumi			FINISH	Jamy		Sheet No.	1 from 4	Customer:

EDCON-COMPONENTS



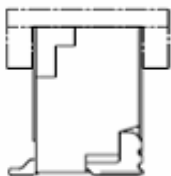
Ordering Informations

Serie	Positions	Body Color	C- Plating	ROHS	Packing				
T68L001	02	BK	TN	R	TR				

Look Table 1	BK= Black	TN= Tin Plated	R= ROHS Conform	BU= Bulk
	WH= White	GF= Gold Flash	N= NON ROHS Conform	TR= Tape Reel (Standard)
	BL= Blue			
	BG= Beige			

Wire to Board Serie Pitch 1,00mm	
Part No.:	T68L001
Customer:	

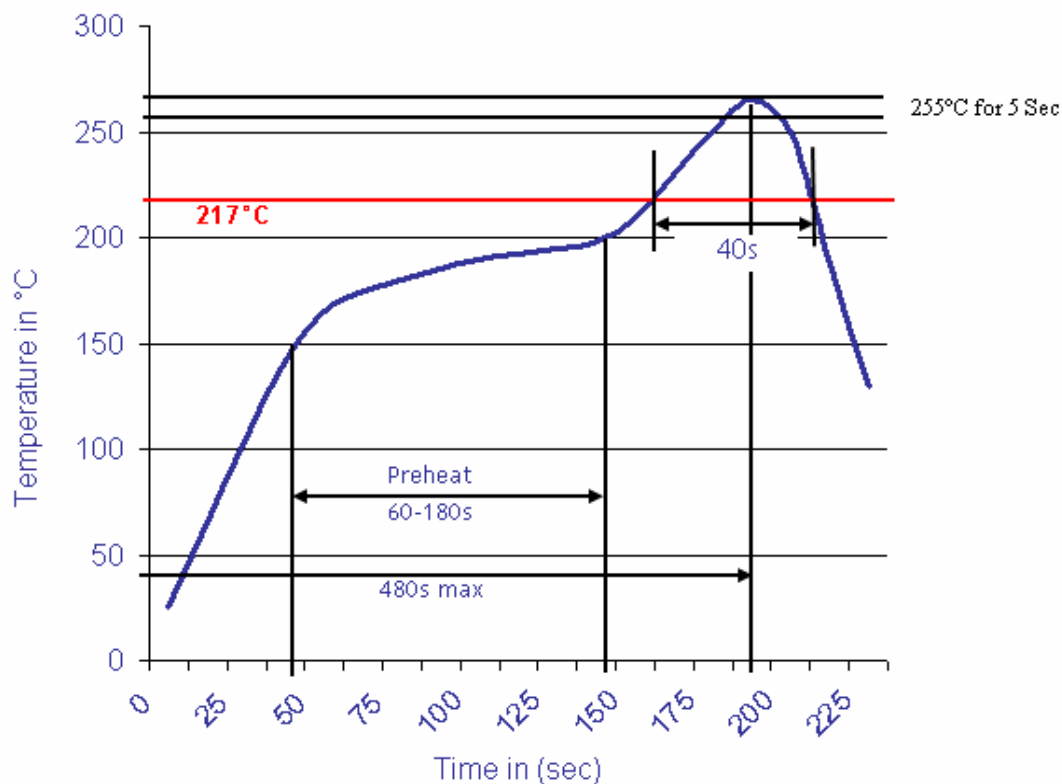
DRW:	Jason	CHKD	Wilson	MATL:	Wilson	TOLERANCE	Mason	DATE	02.04.2009
APPD:	Schumi			FINISH	Jamy		Sheet No.		3 from 4



Soldering Profile

Lead Free Curve

Classification Reflow Profile (JEDEC J-STD-020C)



Wire to Board Serie Pitch 1,00mm	
Part No.:	T68L001
Customer:	

DRW:	Jason	CHKD	Wilson	MATL:	Wilson	TOLERANCE	Mason	DATE	02.04.2009
APPD:	Schumi			FINISH	Jamy		Sheet No.	4 from 4	