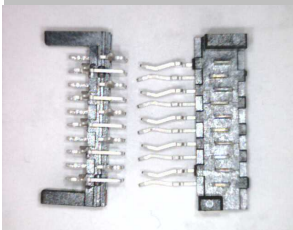


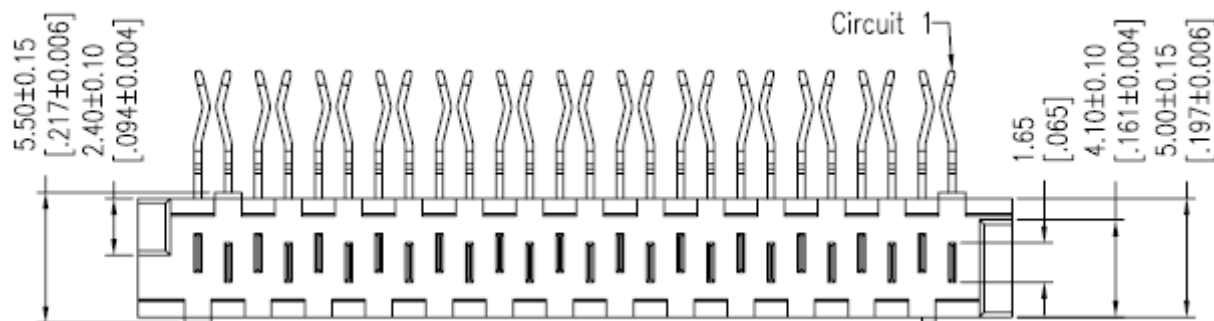
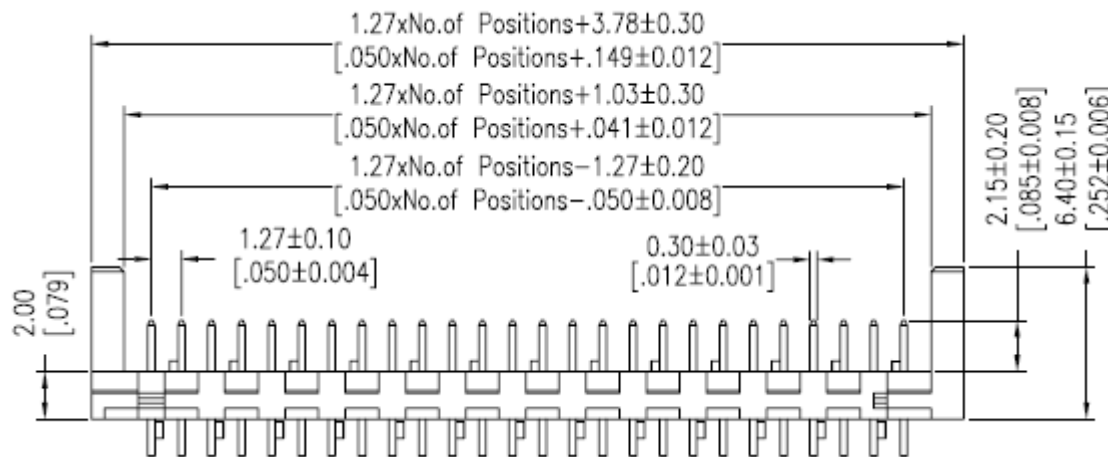
EDCON-COMPONENTS



Technical Discription

Rated Current	2,4 Amp.
Contact Resistance	20mΩ max.
Withstanding Voltage	500V AC/DC
Insulation Resistance:	1000MΩ min
Operating Temperature	. -40°C ~ +105°C
Contact Material	Brass
Contact Plating	Tin over Nickel
Insulator Material	High Temperature Plastic UL94V-0

Drawing



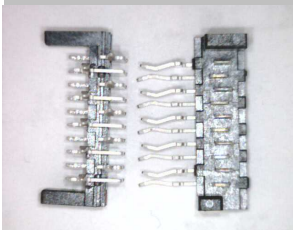
E-PICOFLEX Connector Right angle THT	
Part No.:	T68C005
Customer:	

DRW:	Jason	CHKD:	Wilson	MATL:	Wilson	TOLERANCE:	Mason	DATE:	24.09.2015
APPD:	Schumi			FINISH:	Jamy			Sheet No.:	1 from 4

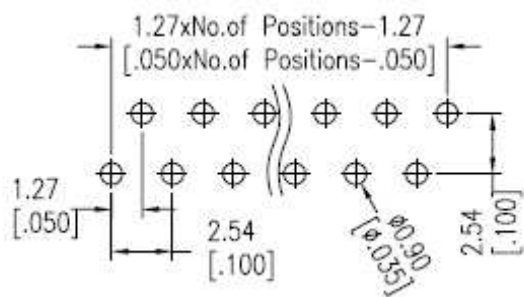
www.edcon-components.com

email: info@edcon-components.com

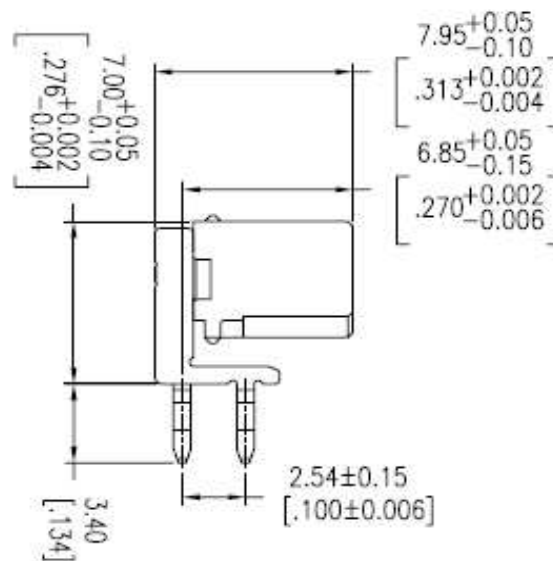
EDCON-COMPONENTS



Drawing



PCB Layout



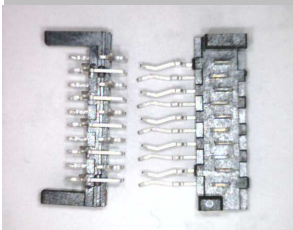
**E-PICOFLEX Connector
Right angle THT**

Part No.: **T68C005**

Customer:

DRW:	Jason	CHKD	Wilson	MATL:	Wilson	TOLERANCE	Mason	DATE	24.09.2015
APPD:	Schumi			FINISH	Jamy		Sheet No.	2 from 4	

EDCON-COMPONENTS



Ordering Informations

Serie	No. Of Pos.	Contact Plating	Insulator Material	Case Color	ROHS	Packing				
T68C005	04	SN	LC	BK	R	TU				

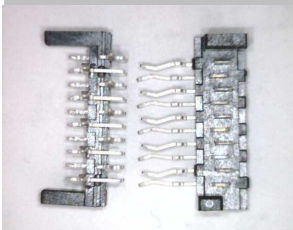
04= 4Pos.	SN= Tinned	LC= LCP	BK= Black	R= ROHS Conform	TU= TUBE Packing
04~26Pos.	G0= Gold Flash overall				
	G1= 3µ Gold overall				
	G2= 5µ Gold overall				
	G3= 10µ Gold overall	S3= 10µ Gold flash on Contact side	S4= 15µ Gold flash on Contact side		
	G4= 15µ Gold overall	S2= 5µ Gold flash on Contact side	S5= 30µ Gold flash on Contact side		
	G5= 30µ Gold overall				
	S0= Gold flash on Contact side	S1= 3µ Gold flash on Contact side			

E-PICOFLEX Connector Right angle THT
Part No.: T68C005

DRW:	Jason	CHKD	Wilson	MATL:	Wilson	TOLERANCE	Mason	DATE	24.09.2015
APPD:	Schumi			FINISH	Jamy		Sheet No.		3 from 4
Customer:									

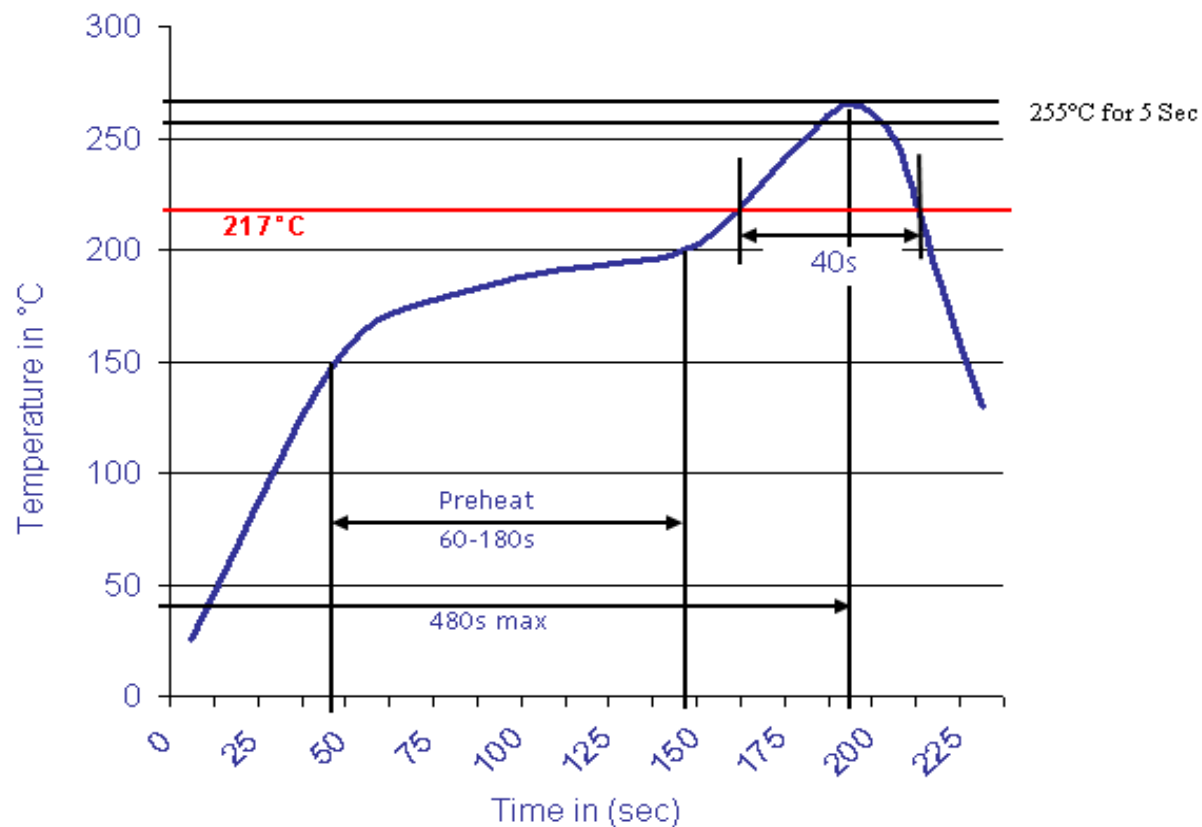
www.edcon-components.com

email: info@edcon-components.com



Soldering Profile Curve

Classification Reflow Profile (JEDEC J-STD-020C)



E-PICOFLEX Connector	
Right angle THT	
Part No.:	T68C005
Customer:	

DRW:	Jason	CHKD	Wilson	MATL:	Wilson	TOLERANCE	Mason	DATE	24.09.2015
APPD:	Schumi			FINISH	Jamy		Sheet No.	4 from 4	