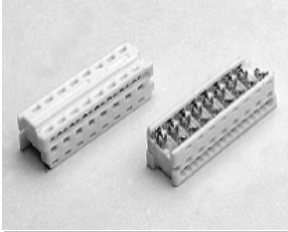


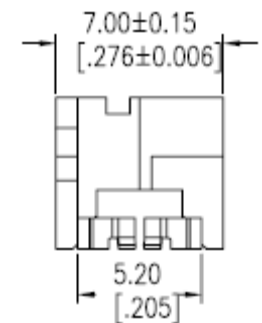
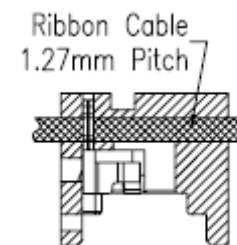
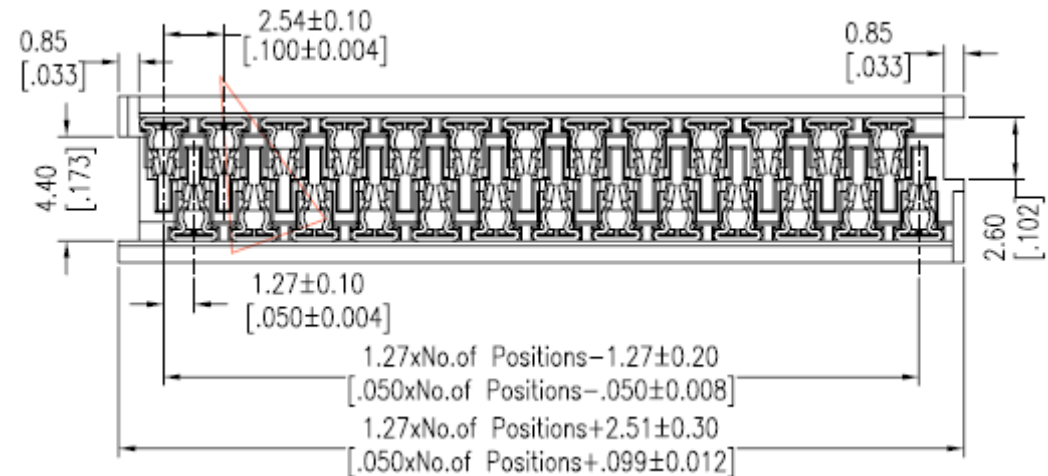
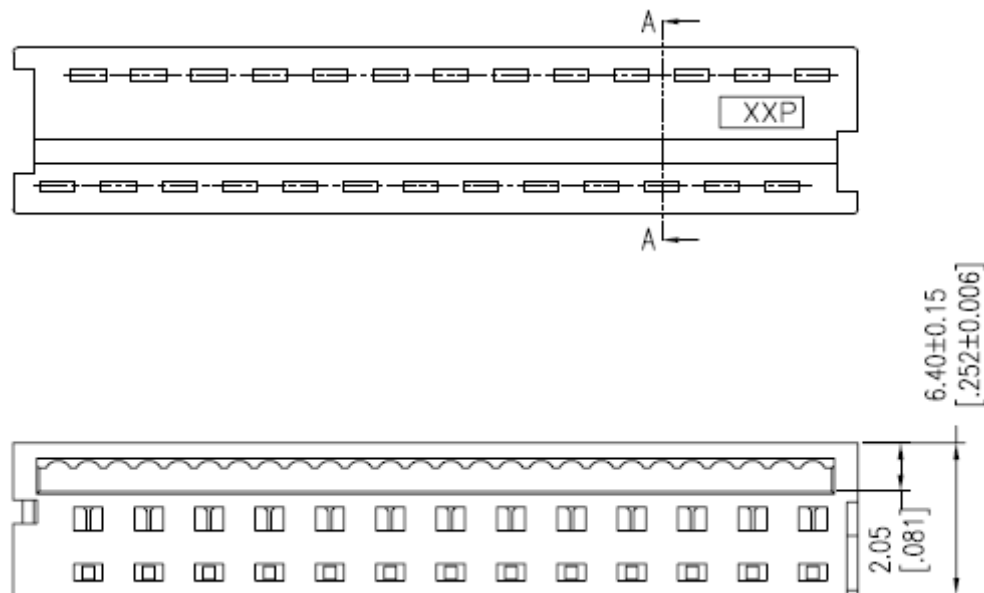
# EDCON-COMPONENTS



## Technical Discription

Rated Current	2,4 Amp.
Contact Resistance	20mΩ max.
Withstanding Voltage	500V AC/DC
Insulation Resistance:	1000MΩ min
Operating Temperature	-40°C ~ +105°C
Contact Material	Brass
Contact Plating	Tin over Nickel
Insulator Material	High Temperature Plastic UL94V-0

## Drawing



## E-PICOFLEX Connector IDC Female

Part No.: **T68C001**

Customer:

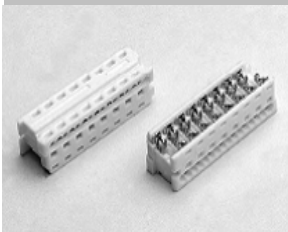
DRW:	Jason	CHKD:	Wilson	MATL:	Wilson	TOLERANCE	Mason	DATE	24.09.2015
APPD:	Schumi			FINISH	Jamy		Sheet No.		1 from 2

[www.edcon-components.com](http://www.edcon-components.com)

email: [info@edcon-components.com](mailto:info@edcon-components.com)

Copyright by S.Tiede

# EDCON-COMPONENTS



## Ordering Informations

Serie	No. Of Pos.	Contact Plating	Insulator Material	Case Color	ROHS	Packing				
<b>T68C001</b>	<b>04</b>	<b>SN</b>	<b>PB</b>	<b>WH</b>	<b>R</b>	<b>TU</b>				

<b>04= 4Pos.</b>	<b>SN= Tinned</b>	<b>PB= PBT</b>	<b>WH= White</b>	<b>R= ROHS Conform</b>	<b>TU= TUBE Packing</b>
<b>04~26Pos.</b>	<b>G0= Gold Flash overall</b>				
	<b>G1= 3μ Gold overall</b>				
	<b>G2= 5μ Gold overall</b>				
	<b>G3= 10μ Gold overall</b>	<b>S3= 10μ Gold flash on Contact side</b>	<b>S4= 15μ Gold flash on Contact side</b>		
	<b>G4= 15μ Gold overall</b>	<b>S2= 5μ Gold flash on Contact side</b>	<b>S5= 30μ Gold flash on Contact side</b>		
	<b>G5= 30μ Gold overall</b>				
	<b>S0= Gold flash on Contact side</b>	<b>S1= 3μ Gold flash on Contact side</b>			

**E-PICOFLEX Connector  
IDC Female**

Part No.: **T68C001**

DRW:	Jason	CHKD	Wilson	MATL:	Wilson	TOLERANCE	Mason	DATE	24.09.2015	Customer:
APPD:	Schumi			FINISH	Jamy		Sheet No.	2 from 2		

[www.edcon-components.com](http://www.edcon-components.com)

email: [info@edcon-components.com](mailto:info@edcon-components.com)