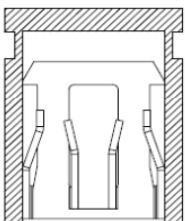


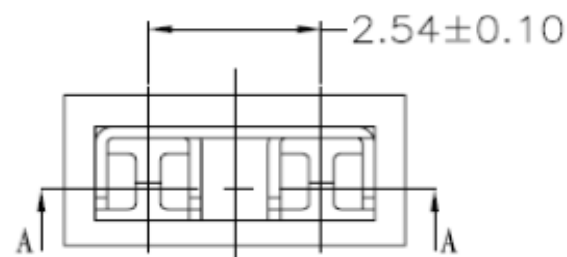
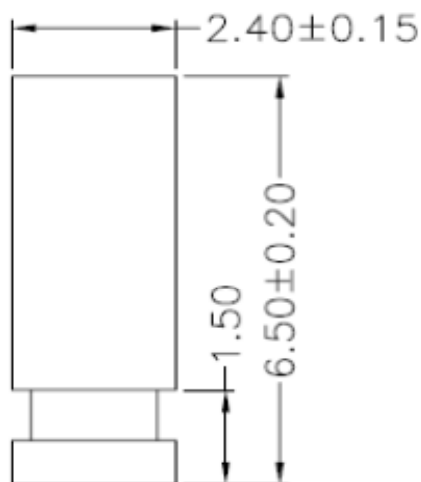
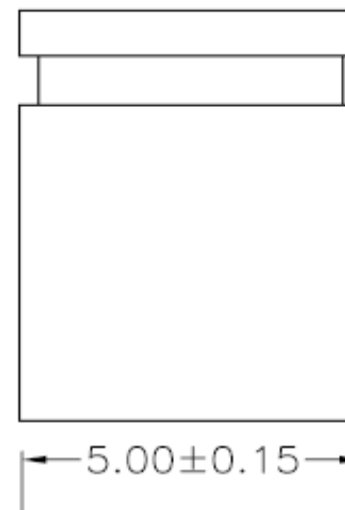
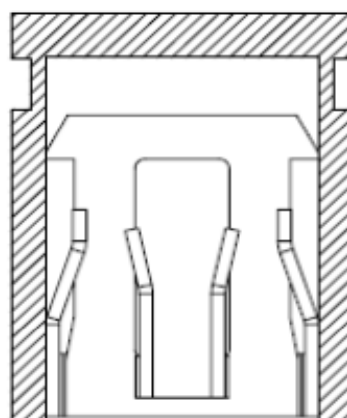
# EDCON-COMPONENTS



## Specifications

Current Rating:	3,0A
Insulation Resistance:	1000M Ohm min.
Contact Resistance:	20milli Ohm max.
Dielectric Voltage:	1000VAC for one minute
Operating Temperature:	-40°C ~ to +105°C
Insulator Material:	PBT+30% G.F.(UL94V-0)
Contact Pin:	Brass
Contact Plating:	Gold or Sn over Ni.

## Drawing



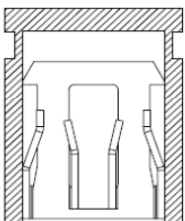
**Jumper Pitch 2,54mm  
Closed Version**

Part No.: **T37A004-**

Customer:

DRW:	Jason	CHKD	Wilson	MATL:	Wilson	TOLERANCE	Mason	DATE	27.11.2017
APPD:	Schumi			FINISH	Jamy		Sheet No.	1 from 4	

# EDCON-COMPONENTS



## Ordering Informations

Serie	No. of Pos.	Contact Plating	Material	Color of Body	ROHS	Packing				
<b>T37A004-</b>	<b>02</b>	<b>G0</b>	<b>PB</b>	<b>BK</b>	<b>R</b>	<b>BU</b>				

<b>G0</b> = Gold Flash	<b>PB</b> = PBT +30% GF	<b>BK</b> = Black	<b>N</b> =NO ROHS conform	<b>BU</b> = Bulk Ware
<b>T0</b> = Tin plated	<b>PA</b> = PA6T	<b>RD</b> = Red	<b>R</b> =ROHS conform	
<b>GA</b> = 3μ Gold Plating		<b>YE</b> = Yellow		
<b>GB</b> = 5μ Gold Plating		<b>GN</b> = Green		
<b>GC</b> = 10μ Gold Plating		<b>GY</b> = Gray		
<b>GD</b> = 30μ Gold Plating		<b>BL</b> = Blue		
<b>S0</b> = Selectiv Plating Gold Flash / Tin		<b>WH</b> = White		
<b>SD</b> = Selectiv Tin/ 5μGold				
<b>SD</b> = Selectiv Tin/ 10μ Gold Flash				
<b>SD</b> = Selectiv Tin/ 20μ Gold	<b>SD</b> = Selectiv Tin/ 30μ Gold			

<b>Jumper Pitch 2,54mm Closed Version</b>	
Part No.:	<b>T37A004-</b>
Customer:	

DRW:	Jason	CHKD	Wilson	MATL:	Wilson	TOLERANCE	Mason	DATE	27.11.2017
APPD:	Schumi			FINISH	Jamy		Sheet No.		3 from 4