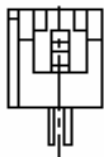


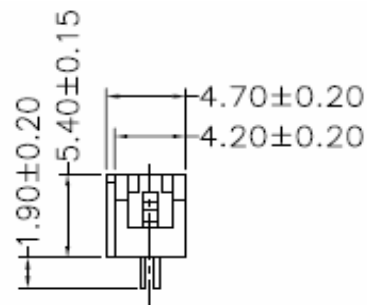
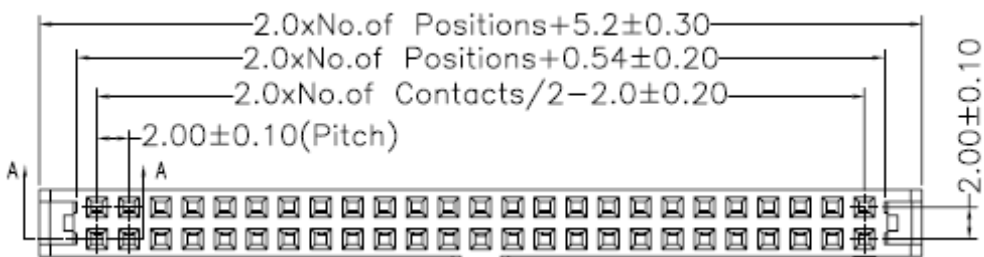
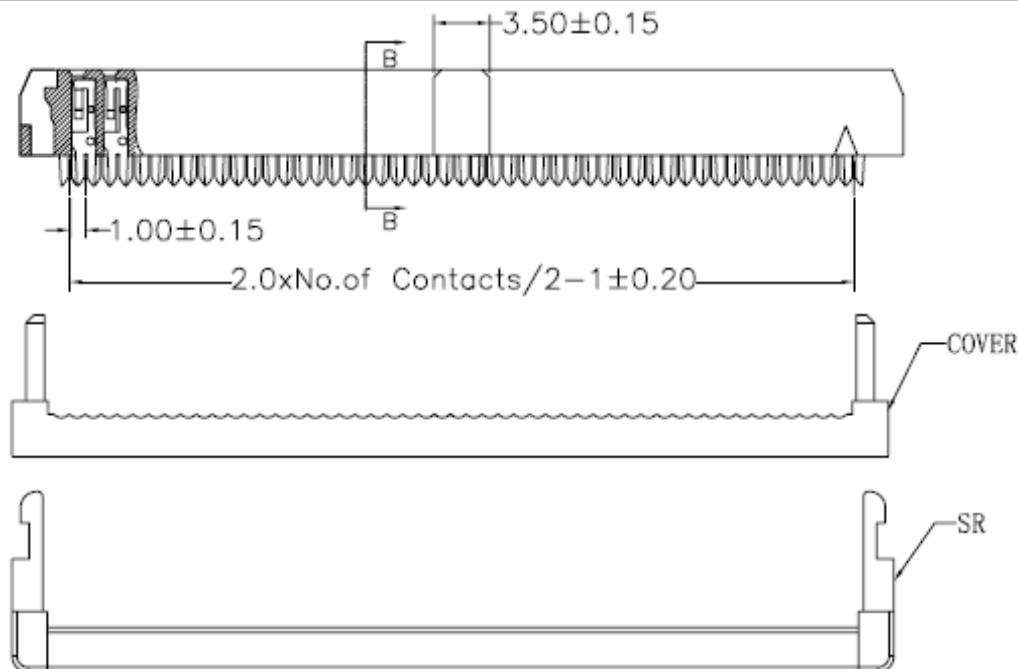
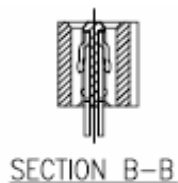
EDCON-COMPONENTS



Specifications

Current Rating:	1,0 Amp.
Insulation Resistance:	1000M Ohm min.
Contact Resistance:	20milli Ohm max.
Dielectric Voltage:	500V AC for one minute
Operating Temperature:	-40°C ~ to +105°C
Insulator Material:	PBT+30% G.F.(UL94V-0)
Contact Pin:	Phosphor Bronze
Contact Plating:	Gold over Ni.

Drawing



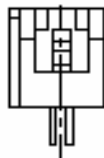
IDC CONNECTOR Pitch	
2,00x2,00mm	
Part No.:	T33B1006
Customer:	

DRW:	Jason	CHKD	Wilson	MATL:	Wilson	TOLERANCE	Mason	DATE	10.04.2009
APPD:	Schumi			FINISH	Jamy		Sheet No.	1 from 2	

www.edcon-components.com

email: info@edcon-components.com

EDCON-COMPONENTS



Ordering Informations

Serie	No. of Pos.	Contact Plating	Material	Color of Body	Special Function	ROHS	Packing			
T33B1006	XX	G0	PB	BK	Y	R	BU			

XX= 6, 8, 10, 12, 14, 16, 18, 20, 22, 24, 26, 30, 34, 36, 40, 44, 50, 60, 64	G0= Gold Flash T0= Tin plated GA= 3µ Gold Plating GB= 5µ Gold Plating GC= 10µ Gold Plating GD= 30µ Gold Plating S0= Selectiv Plating Gold Flash / Tin SD= Selectiv Tin/ 5µGold SD= Selectiv Tin/ 10µ Gold Flash SD= Selectiv Tin/ 20µ Gold	PB= PBT +30% GF f. ROHS SD= Selectiv Tin/ 30µ Gold	BK= Black GR= Gray (427°C) EG= Gray (413°C)	Y= with Strain Relief N= w/o Strain Relief	N= NO ROHS conform R= ROHS conform	BU= Bulk Ware TU= Tube Packing TY= Tray
---	---	---	--	---	---	--

IDC CONNECTOR Pitch 2,00x2,00mm
Part No.: T33B1006
Customer:

DRW:	Jason	CHKD	Wilson	MATL:	Wilson	TOLERANCE	Mason	DATE	10.04.2009
APPD:	Schumi			FINISH	Jamy		Sheet No.	2 from 2	