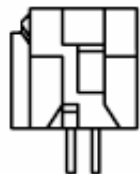


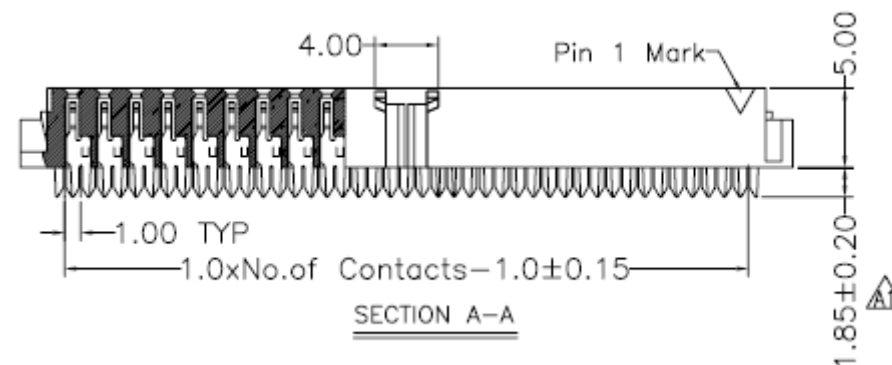
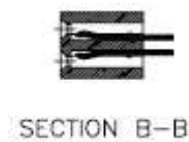
EDCON-COMPONENTS



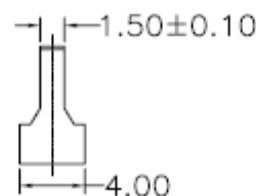
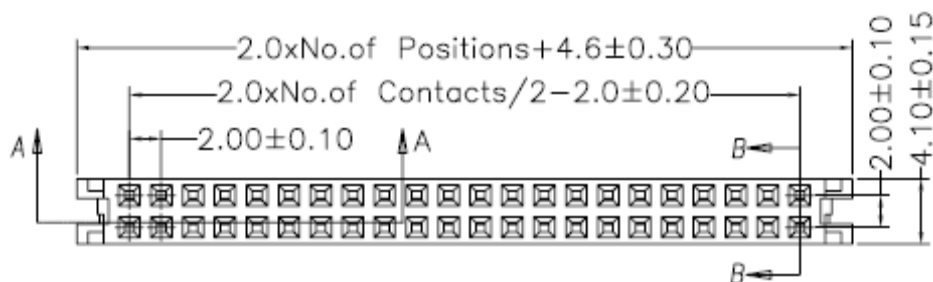
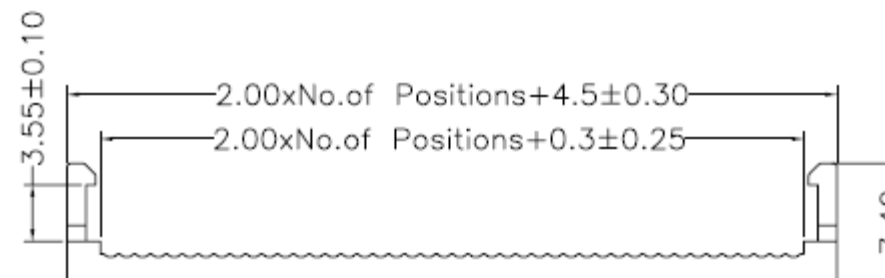
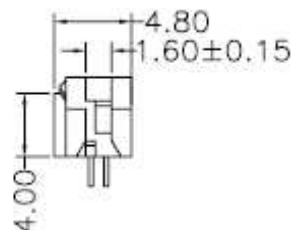
Specifications

Current Rating:	1,0 Amp.
Insulation Resistance:	1000M Ohm min.
Contact Resistance:	20milli Ohm max.
Dielectric Voltage:	500V AC for one minute
Operating Temperature:	. -40°C ~ to +105°C
Insulator Material:	PBT+30% G.F.(UL94V-0)
Contact Pin:	Phosphor Bronze
Contact Plating:	Gold over Ni.

Drawing



Dim:A 8P~64P 2,60mm
DIM A 6P 2,00mm



**IDC CONNECTOR Pitch
2,00x2,00mm**

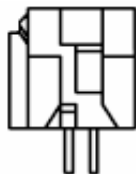
Part No.: **T33B1003**

DRW:	Jason	CHKD	Wilson	MATL:	Wilson	TOLERANCE	Mason	DATE	10.04.2009	Customer:
APPD:	Schumi			FINISH	Jamy		Sheet No.	1 from 2		

www.edcon-components.com

email: info@edcon-components.com

EDCON-COMPONENTS



Ordering Informations

Serie	No. of Pos.	Contact Plating	Material	Color of Body	Special Function	ROHS	Packing			
T33B1003	XX	G0	PB	BK	N	R	BU			

XX = 6, 8, 10, 12, 14, 16, 18, 20, 22, 24, 26, 30, 34, 36, 40, 44, 50, 60, 64	G0 = Gold Flash	PB = PBT +30% GF f. ROHS	BK = Black GR = Gray (427°C) EG = Gray (413°C)	N = No	N =NO ROHS conform R =ROHS conform	BU = Bulk Ware TU = Tube Packing TY = Tray
	T0 = Tin plated					
	GA = 3µ Gold Plating					
	GB = 5µ Gold Plating					
	GC = 10µ Gold Plating					
	GD = 30µ Gold Plating					
	S0 = Selectiv Plating Gold Flash / Tin					
	SD = Selectiv Tin/ 5µGold					
SD = Selectiv Tin/ 10µ Gold Flash						
SD = Selectiv Tin/ 20µ Gold	SD = Selectiv Tin/ 30µ Gold					

IDC CONNECTOR Pitch 2,00x2,00mm	
Part No.:	T33B1003
Customer:	

DRW:	Jason	CHKD	Wilson	MATL:	Wilson	TOLERANCE	Mason	DATE	10.04.2009
APPD:	Schumi			FINISH	Jamy		Sheet No.	2 from 2	