

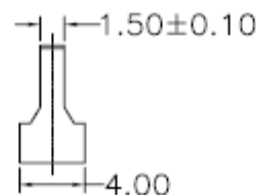
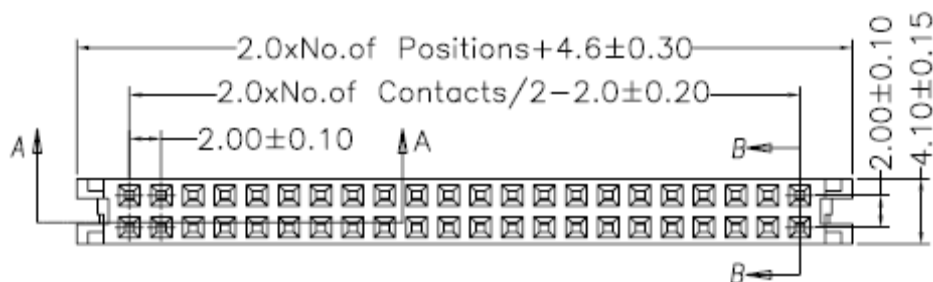
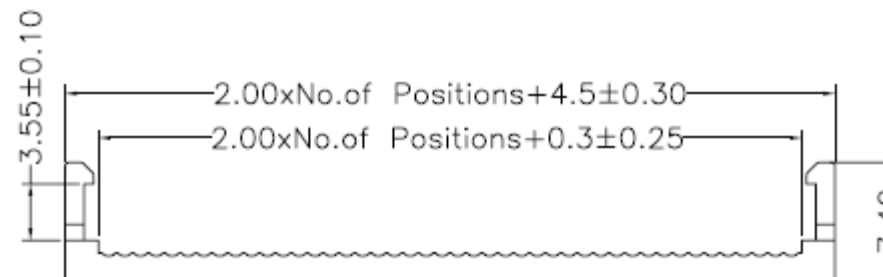
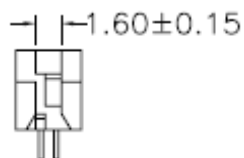
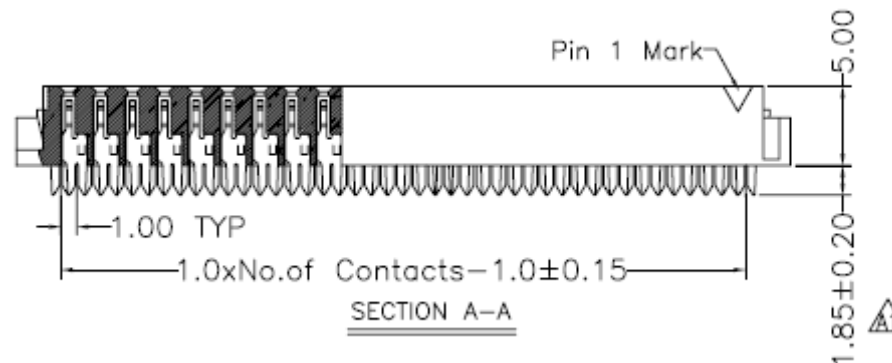
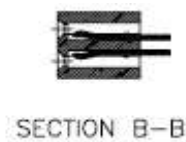
EDCON-COMPONENTS



Specifications

Current Rating:	1,0 Amp.
Insulation Resistance:	1000M Ohm min.
Contact Resistance:	20milli Ohm max.
Dielectric Voltage:	500V AC for one minute
Operating Temperature:	. -40°C ~ to +105°C
Insulator Material:	PBT+30% G.F.(UL94V-0)
Contact Pin:	Phosphor Bronze
Contact Plating:	Gold over Ni.

Drawing



IDC CONNECTOR Pitch 2,00x2,00mm	
Part No.:	T33B1002
Customer:	

DRW:	Jason	CHKD	Wilson	MATL:	Wilson	TOLERANCE	Mason	DATE	10.04.2009
APPD:	Schumi			FINISH	Jamy		Sheet No.	1 from 2	

EDCON-COMPONENTS



Ordering Informations

Serie	No. of Pos.	Contact Plating	Material	Color of Body	Special Function	ROHS	Packing			
T33B1002	XX	G0	PB	BK	N	R	BU			

XX = 6, 8, 10, 12, 14, 16, 18, 20, 22, 24, 26, 30, 34, 36, 40, 44, 50, 60, 64	G0 = Gold Flash T0 = Tin plated GA = 3µ Gold Plating GB = 5µ Gold Plating GC = 10µ Gold Plating GD = 30µ Gold Plating S0 = Selectiv Plating Gold Flash / Tin SD = Selectiv Tin/ 5µGold SD = Selectiv Tin/ 10µ Gold Flash SD = Selectiv Tin/ 20µ Gold	PB = PBT +30% GF f. ROHS SD = Selectiv Tin/ 30µ Gold	BK = Black GR = Gray (427°C) EG = Gray (413°C)	N = No	N =NO ROHS conform R =ROHS conform	BU = Bulk Ware TU = Tube Packing TY = Tray
--	---	---	---	---------------	---	---

IDC CONNECTOR Pitch 2,00x2,00mm
Part No.: T33B1002
Customer:

DRW:	Jason	CHKD	Wilson	MATL:	Wilson	TOLERANCE	Mason	DATE	10.04.2009
APPD:	Schumi			FINISH	Jamy		Sheet No.		2 from 2