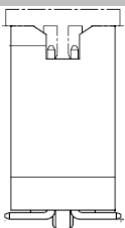


EDCON-COMPONENTS

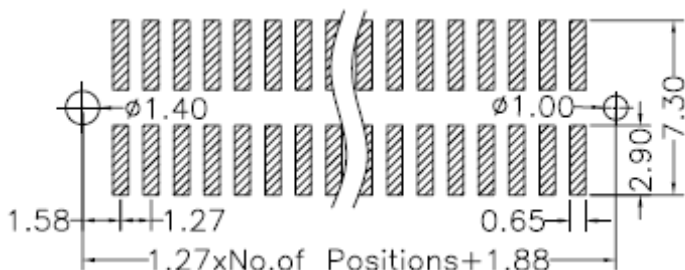


Specifications

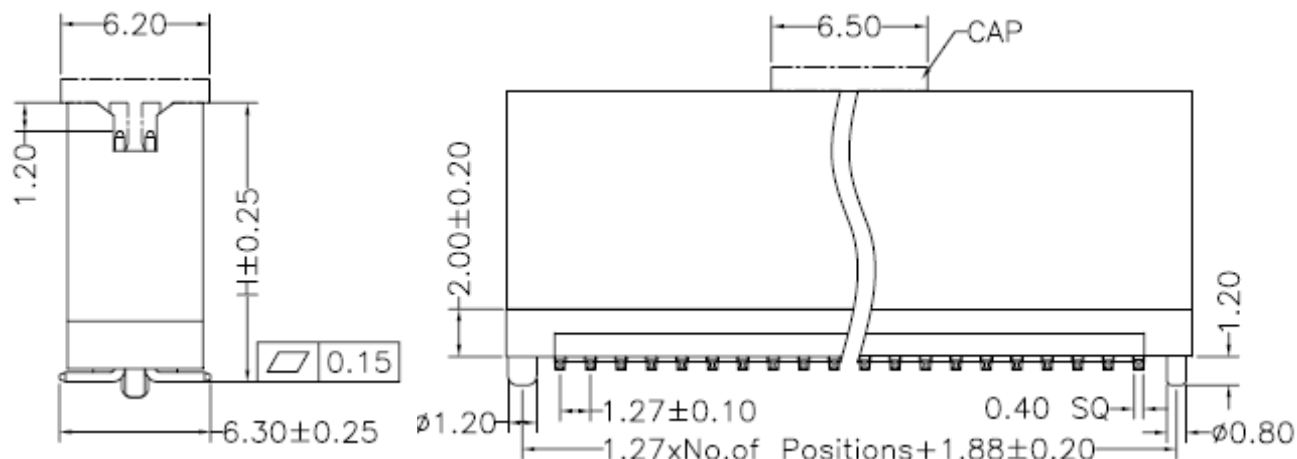
Current Rating: 1,0A
 Insulation Resistance: 1000M Ohm min.
 Contact Resistance: 20milli Ohm max.
 Dielectric Voltage: 500V AC/DC
 Operating Temperature: -40°C ~ to +105°C
 Insulator Material: PA6T+30% G.F.(UL94V-0)

Contact Pin: Brass
 Contact Plating: Gold Flash all over

PCB Layout



Drawing

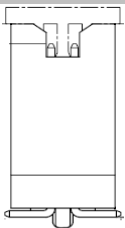


Code H	mm
H1	8,2
H2	9,5
H3	10,2
H4	11,5
H5	12,1
H6	15,3
H7	16,6

Box Header Pitch	
1,27x1,27mm	
Part No.:	T16C007-
Customer:	

DRW:	Jason	CHKD	Wilson	MATL:	Wilson	TOLERANCE	Mason	DATE	26.08.2017
APPD:	Schumi			FINISH	Jamy		Sheet No.		1 from 4

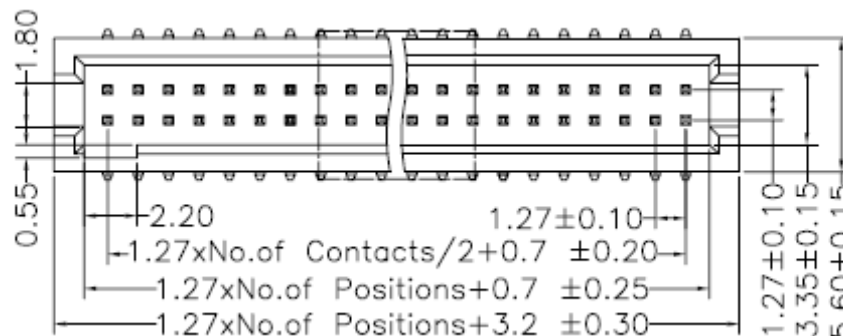
EDCON-COMPONENTS



Pin Code length table free configuration

Drawing

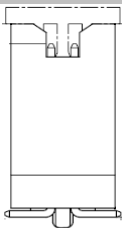
Pin L. Code	Dimension (mm)			
A00	6,3			
A01				
A02				
A03				
A04				
A05				
A06				
A07				
A08				
A09				
A10				
A11				
A12				
A13				
A14				
A15				
A16				
A17				
A18				
A19				
A20				
A21				
A22				



Box Header Pitch 1,27x1,27mm
Part No.: T16C007-
Customer:

DRW:	Jason	CHKD	Wilson	MATL:	Wilson	TOLERANCE	Mason	DATE	26.08.2017
APPD:	Schumi			FINISH	Jamy		Sheet No.	2 from 4	

EDCON-COMPONENTS



Ordering Informations

Serie	No. of Pos.	Contact Plating	Material	Color of Body	Pin Length configuration	Body Height	ROHS	Packing		
-------	-------------	-----------------	----------	---------------	--------------------------	-------------	------	---------	--	--

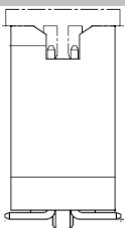
T16C007-	XX	G0	PA	BK	A00	Hx	R	BU		
-----------------	-----------	-----------	-----------	-----------	------------	-----------	----------	-----------	--	--

XX= 10,14, 16,20,24,26, 30,32,34,40, 44,50,60,64, 80,100	G0= Gold Flash	PA= PA6T +30% GF f. ROHS	BK= Black	Axx= look table Pin L ..	Hx= look Table CODE H	N= NO ROHS conform	BU= Bulk Ware
	T0= Tin plated						
	GA= 3µ Gold Plating	WH= White	TU= Tube with Cap				
	GB= 5µ Gold Plating			TY= Tray Packing/Cap			
	GC= 10µ Gold Plating				TR= Tape/ Reel w.Cap		
	GD= 30µ Gold Plating						
	S0= Selectiv Plating Gold Flash / Tin						
	SD= Selectiv Tin/ 5µGold						
SD= Selectiv Tin/ 10µ Gold Flash	SD= Selectiv Tin/ 30µ Gold						
SD= Selectiv Tin/ 20µ Gold							

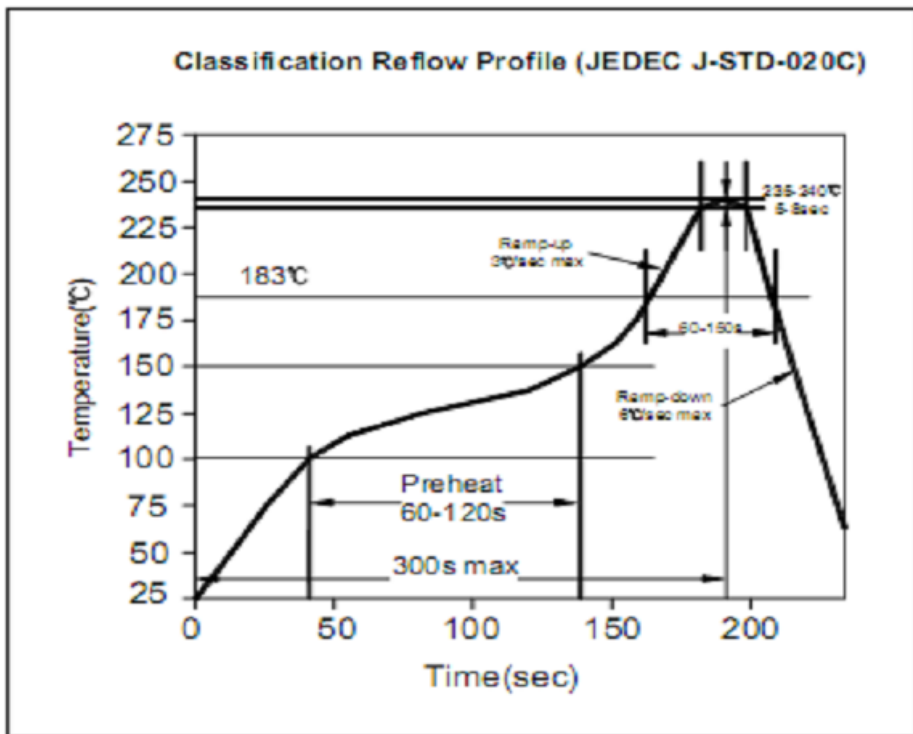
Box Header Pitch	
1,27x1,27mm	
Part No.:	T16C007-
Customer:	

DRW:	Jason	CHKD	Wilson	MATL:	Wilson	TOLERANCE	Mason	DATE	26.08.2017
APPD:	Schumi			FINISH	Jamy		Sheet No.		3 from 4

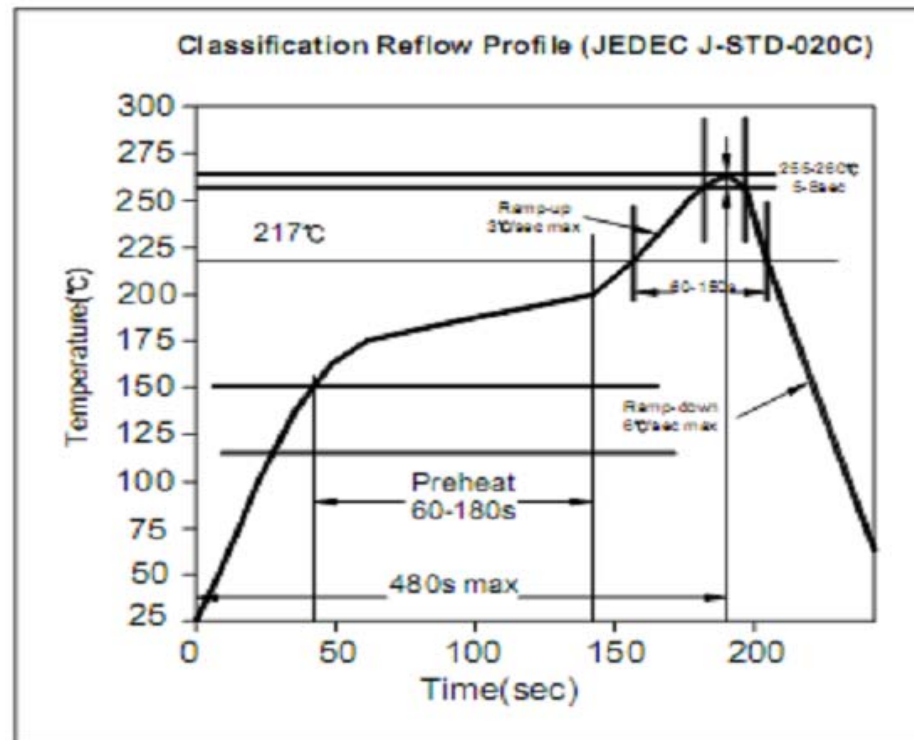
EDCON-COMPONENTS



Soldering Profile for Lead Soldering (P.B.T.)



Soldering Profile for Lead Free Soldering (Nylon 6T)



Box Header Pitch
1,27x1,27mm

Part No.: **T16C007-**

DRW:	Jason	CHKD	Wilson	MATL:	Wilson	TOLERANCE	Mason	DATE	26.08.2017
APPD:	Schumi			FINISH	Jamy		Sheet No.	4 from 4	Customer:

www.edcon-components.com

email: info@edcon-components.com