

# Data Sheet

## Pluggable Terminal Block (Header)

**Pitch: 5,00 mm**

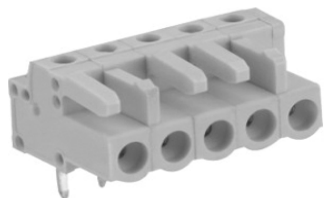
**Serie: A14L088**

### Customer Information for special Item

**EDCON Customer : 0**

**Customer Version No. : 0**

# EDCON-COMPONENTS



## Technical Discription

## Drawing (Dimension in mm)

### Electrical

Rated Voltage 300Volt  
 Rated Current 12A

Withstanding Voltage 2,5KV  
 Insulation Resistance 5000MmΩ / 1000V

### Mechanical

Operating Temperature . -40°C ~ +115°C

### Dimensions

Pitch (mm) 5,00  
 Poles 2 ~ 24 Pos.

### Materials

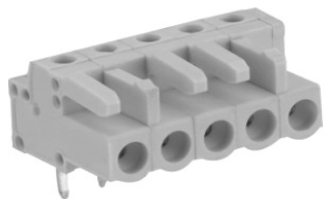
Terminal Housing PA66  
 Pin Header Brass Tin Plated

**Pluggable Terminal Block  
(Header)**

Part No.: **A14L088**

DRW:	Jason	CHKD	Wilson	MATL:	Wilson	TOLERANCE	Mason	DATE	03.02.2011
APPD:	Schumi			FINISH	Jamy		Sheet No.	1 from 4	Customer:

# EDCON-COMPONENTS



PCB Layout

Dimensions (mm)

No. of Pos.	A	Tol. A	B	Tol. B
02	10,00	± 0,15	5,00	± 0,15
03	15,00	± 0,15	10,00	± 0,15
04	20,00	± 0,15	15,00	± 0,15
05	25,00	± 0,15	20,00	± 0,15
06	30,00	± 0,15	25,00	± 0,15
07	35,00	± 0,20	30,00	± 0,20
08	40,00	± 0,20	35,00	± 0,20
09	45,00	± 0,20	40,00	± 0,20
10	50,00	± 0,20	45,00	± 0,20
11	55,00	± 0,20	50,00	± 0,20
12	60,00	± 0,20	55,00	± 0,20
13	65,00	± 0,25	60,00	± 0,25
14	70,00	± 0,25	65,00	± 0,25
15	75,00	± 0,25	70,00	± 0,25
16	80,00	± 0,25	75,00	± 0,25
17	85,00	± 0,25	80,00	± 0,25
18	90,00	± 0,25	85,00	± 0,25
19	95,00	± 0,30	90,00	± 0,30
20	100,00	± 0,30	95,00	± 0,30
21	105,00	± 0,30	100,00	± 0,30
22	110,00	± 0,30	105,00	± 0,30
23	115,00	± 0,30	110,00	± 0,30
24	120,00	± 0,30	115,00	± 0,30

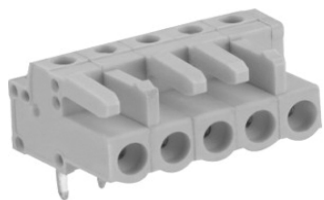
**Pluggable Terminal Block  
(Header)**

Part No.: **A14L088**

Customer:

DRW:	Jason	CHKD	Wilson	MATL:	Wilson	TOLERANCE	Mason	DATE	03.02.2011
APPD:	Schumi			FINISH	Jamy		Sheet No.	2 from 4	

# EDCON-COMPONENTS



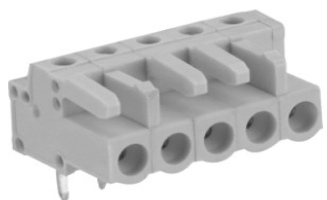
## Ordering Informations

Serie	No. of Pos.	Body Color	No Function	Approval Code	ROHS	Packing	EDCON Cust. No.	Customer Version		
<b>A14L088</b>	<b>02</b>	<b>LG</b>	<b>N</b>	<b>N</b>	<b>R</b>	<b>B</b>				

Pitch 5,00	<b>02</b> = Number of Pos.	<b>N</b> = No function	<b>N</b> = NON Approval	<b>R</b> = ROHS Conform	<b>B</b> = Bulk-Ware <b>I</b> = Individual Package	<b>xxxxxx</b> = Customer Number	<b>xxx</b> = Customer Version ??(Printing)
	Standard 2 ~ 24 Pos.		<b>A</b> = UL /UR Approval Please consult EDCON for available	<b>N</b> = NON ROHS Conform			
	<b>GY</b> = Gray		<b>B</b> = VDE Approval Please consult EDCON for available				
	<b>LG</b> = Light Gray		<b>C</b> = TÜV Approval Please consult EDCON for available				
	<b>OR</b> = Orange						

<b>Pluggable Terminal Block (Header)</b>	
Part No.:	<b>A14L088</b>
Customer:	

DRW:	Jason	CHKD	Wilson	MATL:	Wilson	TOLERANCE	Mason	DATE	03.02.2011
APPD:	Schumi			FINISH	Jamy		Sheet No.		3 from 4



Soldering Profile Curve

Classification Reflow Profile (JEDEC J-STD-020C)



**Pluggable Terminal Block (Header)**

Part No.: **A14L088**

Customer:

DRW:	Jason	CHKD	Wilson	MATL:	Wilson	TOLERANCE	Mason	DATE	03.02.2011
APPD:	Schumi			FINISH	Jamy		Sheet No.	4 from 4	