

Data Sheet

Pluggable Terminal Block (Header)

Pitch: 5,00 mm

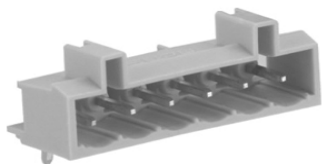
Serie: A14L084

Customer Information for special Item

EDCON Customer : 0

Customer Version No. : 0

EDCON-COMPONENTS



Technical Discription

Drawing (Dimension in mm)

Electrical

Rated Voltage 300Volt
 Rated Current 10A

Withstanding Voltage 2,5KV
 Insulation Resistance 5000MmΩ / 1000V

Mechanical

Operating Temperature . -40°C ~ +115°C

Dimensions

Pitch (mm) 5,00
 Poles 2 ~ 24 Pos.

Materials

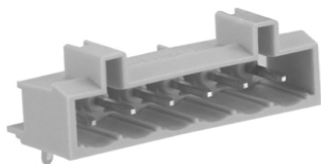
Terminal Housing PA66
 Pin Header Brass Tin Plated

**Pluggable Terminal Block
(Header)**

Part No.: **A14L084**

DRW:	Jason	CHKD	Wilson	MATL:	Wilson	TOLERANCE	Mason	DATE	03.02.2011
APPD:	Schumi			FINISH	Jamy		Sheet No.	1 from 4	Customer:

EDCON-COMPONENTS



PCB Layout

Dimensions (mm)

No. of Pos.	A	Tol. A	B	Tol. B
02	10,00	± 0,15	5,00	± 0,15
03	15,00	± 0,15	10,00	± 0,15
04	20,00	± 0,15	15,00	± 0,15
05	25,00	± 0,15	20,00	± 0,15
06	30,00	± 0,15	25,00	± 0,15
07	35,00	± 0,20	30,00	± 0,20
08	40,00	± 0,20	35,00	± 0,20
09	45,00	± 0,20	40,00	± 0,20
10	50,00	± 0,20	45,00	± 0,20
11	55,00	± 0,20	50,00	± 0,20
12	60,00	± 0,20	55,00	± 0,20
13	65,00	± 0,25	60,00	± 0,25
14	70,00	± 0,25	65,00	± 0,25
15	75,00	± 0,25	70,00	± 0,25
16	80,00	± 0,25	75,00	± 0,25
17	85,00	± 0,25	80,00	± 0,25
18	90,00	± 0,25	85,00	± 0,25
19	95,00	± 0,30	90,00	± 0,30
20	100,00	± 0,30	95,00	± 0,30
21	105,00	± 0,30	100,00	± 0,30
22	110,00	± 0,30	105,00	± 0,30
23	115,00	± 0,30	110,00	± 0,30
24	120,00	± 0,30	115,00	± 0,30

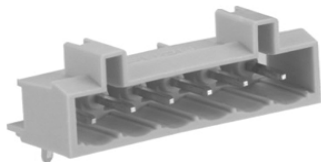
**Pluggable Terminal Block
(Header)**

Part No.: **A14L084**

Customer:

DRW:	Jason	CHKD	Wilson	MATL:	Wilson	TOLERANCE	Mason	DATE	03.02.2011
APPD:	Schumi			FINISH	Jamy		Sheet No.	2 from 4	

EDCON-COMPONENTS



Ordering Informations

Serie	No. of Pos.	Body Color	No Function	Approval Code	ROHS	Packing	EDCON Cust. No.	Customer Version		
-------	-------------	------------	-------------	---------------	------	---------	-----------------	------------------	--	--

A14L084	02	LG	N	N	R	B				
----------------	-----------	-----------	----------	----------	----------	----------	--	--	--	--

Pitch 5,00	02 = Number of Pos.		N = No function	N = NON Approval	R = ROHS Conform	B = Bulk-Ware	xxxxxx = Customer Number	xxx = Customer Version ??(Printing)		
---------------	----------------------------	--	------------------------	-------------------------	-------------------------	----------------------	---------------------------------	--	--	--

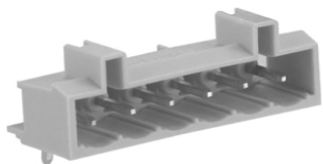
Standard 2 ~ 24 Pos.				A = UL /UR Approval Please consult EDCON for available	N = NON ROHS Conform	I = Individual Package		
	GY = Gray			B = VDE Approval Please consult EDCON for available				
	LG = Light Gray			C = TÜV Approval Please consult EDCON for available				
	OR = Orange							

Pluggable Terminal Block (Header)

Part No.: **A14L084**

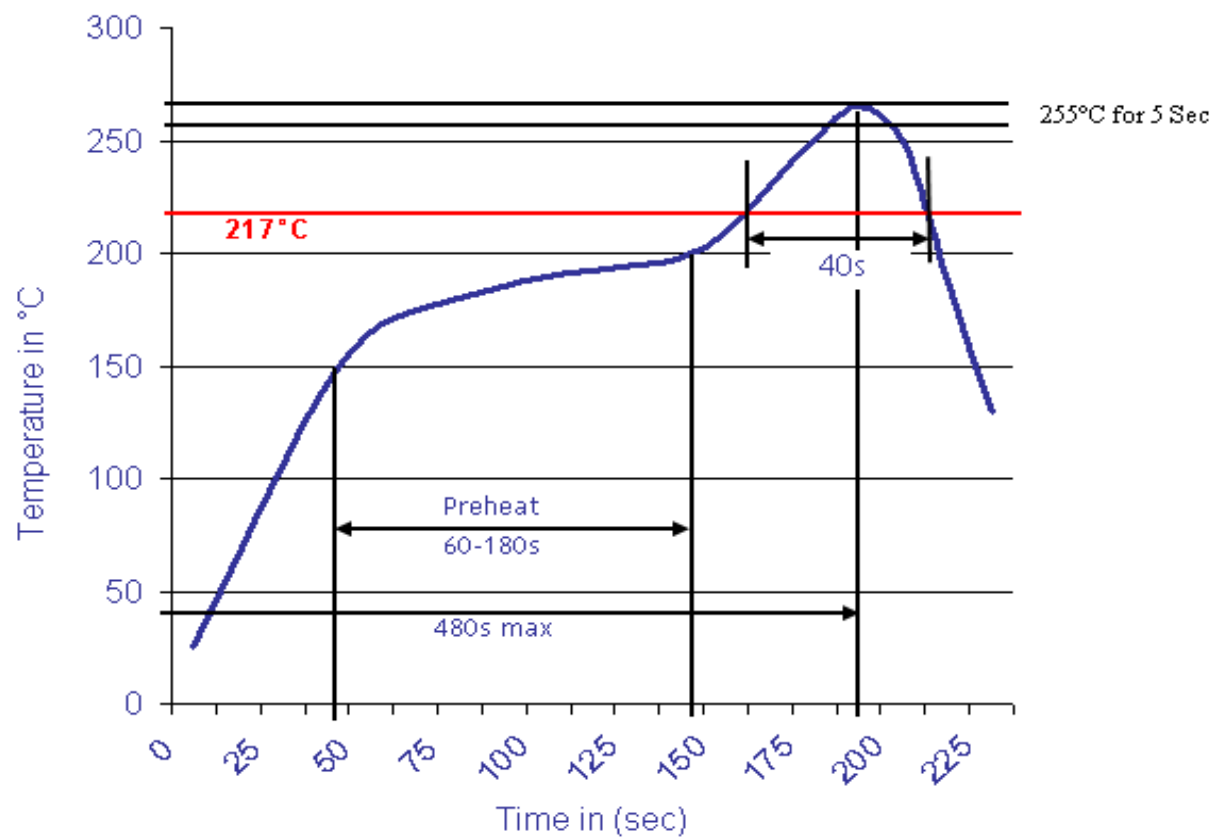
DRW:	Jason	CHKD	Wilson	MATL:	Wilson	TOLERANCE	Mason	DATE	03.02.2011
APPD:	Schumi			FINISH	Jamy		Sheet No.		3 from 4

Customer:



Soldering Profile Curve

Classification Reflow Profile (JEDEC J-STD-020C)



**Pluggable Terminal Block
(Header)**

Part No.: **A14L084**

Customer:

DRW:	Jason	CHKD	Wilson	MATL:	Wilson	TOLERANCE	Mason	DATE	03.02.2011
APPD:	Schumi			FINISH	Jamy		Sheet No.	4 from 4	