

Data Sheet

Screwless Pluggable Terminal Block (Plug)

Pitch: 5,00 mm

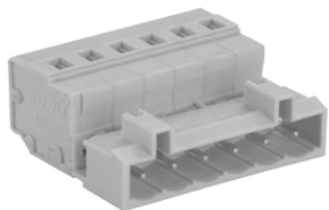
Serie: A14L071

Customer Information for special Item

EDCON Customer : 0

Customer Version No. : 0

EDCON-COMPONENTS



Technical Discription

Drawing (Dimension in mm)

Electrical

Rated Voltage	300Volt
Rated Current	16A
Wire Range	0,2 ~ 2,5mm ²
Wire Range AWG-Size	14 ~ 24

Withstanding Voltage	4,0KV Peak
Insulation Resistance	5000MΩ / 1000V

Mechanical

Operating Temperature	. -40°C ~ +115°C
Wire Strip Length	8-9mm

Dimensions

Pitch (mm)	5,00
Poles	2 ~ 24 Pos.

Materials

Terminal Housing	Thermoplastic, UL94V-0
------------------	------------------------

Cage	Steel Ni Plated
------	-----------------

**Screwless Pluggable
Terminal Block (Plug)**

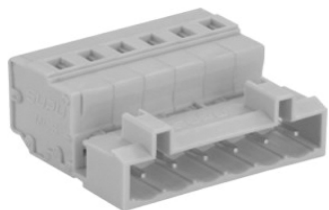
Part No.: **A14L071**

DRW:	Jason	CHKD	Wilson	MATL:	Wilson	TOLERANCE	Mason	DATE	03.02.2011
APPD:	Schumi			FINISH	Jamy		Sheet No.	1 from 4	Customer:

www.edcon-components.com

email: info@edcon-components.com

EDCON-COMPONENTS



Dimension Tolerance (mm)

No. of Pos.	A	Tol. A	B	Tol. B
02	10,00	± 0,10	5,00	± 0,10
03	15,00	± 0,10	10,00	± 0,10
04	20,00	± 0,10	15,00	± 0,10
05	25,00	± 0,10	20,00	± 0,10
06	30,00	± 0,10	25,00	± 0,10
07	35,00	± 0,10	30,00	± 0,10
08	40,00	± 0,10	35,00	± 0,10
09	45,00	± 0,20	40,00	± 0,20
10	50,00	± 0,20	45,00	± 0,20
11	55,00	± 0,20	50,00	± 0,20
12	60,00	± 0,20	55,00	± 0,20
13	65,00	± 0,20	60,00	± 0,20
14	70,00	± 0,20	65,00	± 0,20
15	75,00	± 0,20	70,00	± 0,20
16	80,00	± 0,20	75,00	± 0,20
17	85,00	± 0,30	80,00	± 0,30
18	90,00	± 0,30	85,00	± 0,30
19	95,00	± 0,30	90,00	± 0,30
20	100,00	± 0,30	95,00	± 0,30
21	105,00	± 0,30	100,00	± 0,30
22	110,00	± 0,30	105,00	± 0,30
23	115,00	± 0,30	110,00	± 0,30
24	120,00	± 0,30	115,00	± 0,30

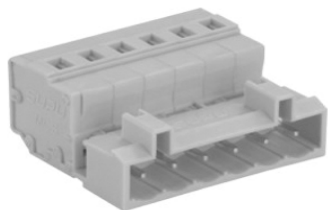
Screwless Pluggable Terminal Block (Plug)

Part No.: **A14L071**

Customer:

DRW:	Jason	CHKD	Wilson	MATL:	Wilson	TOLERANCE	Mason	DATE	03.02.2011
APPD:	Schumi			FINISH	Jamy		Sheet No.	2 from 4	

EDCON-COMPONENTS



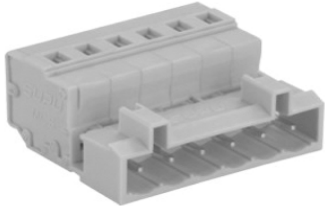
Ordering Informations

Serie	No. of Pos.	Body Color	Function	Approval Code	ROHS	Packing	EDCON Cust. No.	Customer Version		
A14L071	02	LG	N	N	R	B				

Pitch 5,00	02 = Number of Pos.	N = No function	N = NON Approval	R = ROHS Conform	B = Bulk-Ware	xxxxxx = Customer Number	xxx = Customer Version ??(Printing)
	Standard 2 ~ 24Pos.		A = UL /UR Approval Please consult EDCON for available	N = NON ROHS Conform	I = Individual Package		
	GY = Gray		B = VDE Approval Please consult EDCON for available	C = TÜV Approval Please consult EDCON for available			
	LG = Light Gray						
	OR = Orange						

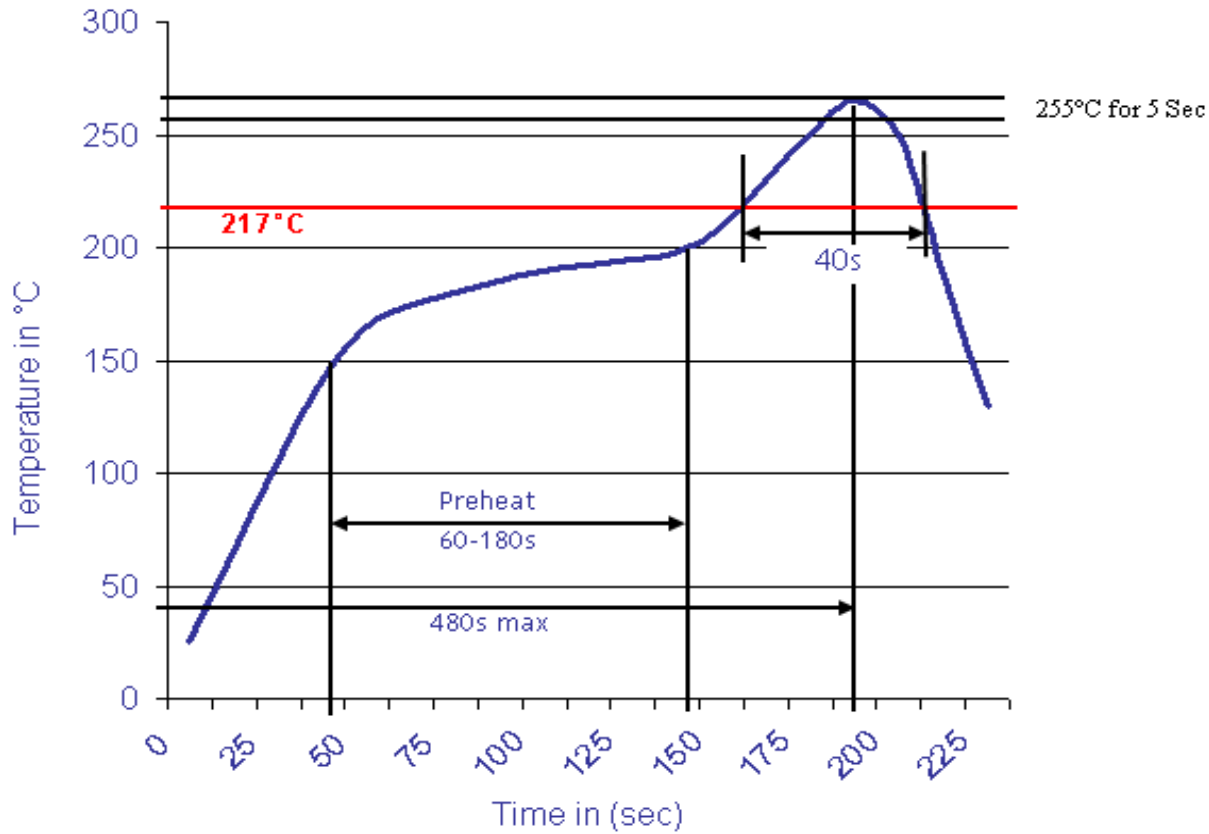
Screwless Pluggable Terminal Block (Plug)	
Part No.:	A14L071
Customer:	

DRW:	Jason	CHKD	Wilson	MATL:	Wilson	TOLERANCE	Mason	DATE	03.02.2011
APPD:	Schumi			FINISH	Jamy			Sheet No.	3 from 4



Soldering Profile Curve

Classification Reflow Profile (JEDEC J-STD-020C)



Screwless Pluggable Terminal Block (Plug)

Part No.: **A14L071**

Customer:

DRW:	Jason	CHKD	Wilson	MATL:	Wilson	TOLERANCE	Mason	DATE	03.02.2011
APPD:	Schumi			FINISH	Jamy		Sheet No.	4 from 4	