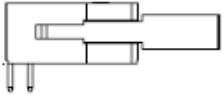


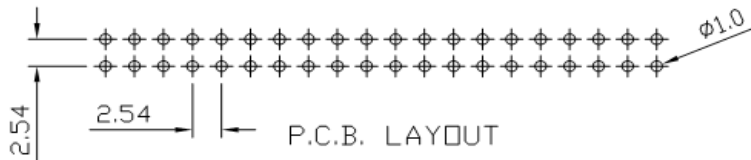
EDCON-COMPONENTS



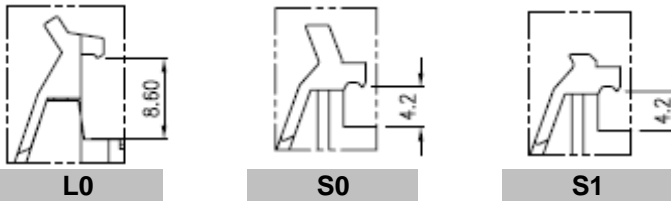
Specifications

Current Rating: 3,0A
 Insulation Resistance: 500M Ohm min.
 Contact Resistance: 20milli Ohm max.
 Dielectric Voltage: 500V AC for one minute
 Operating Temperature: -40°C ~ to +105°C
 Insulator Material: PBT / Polyester (UL94V-0)

Contact Pin: Brass
 Contact Plating: Gold all over or Selectiv Ni.
 Latches: Plastic

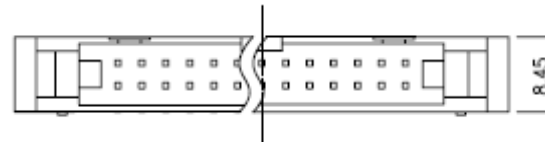
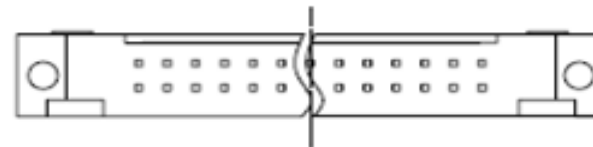
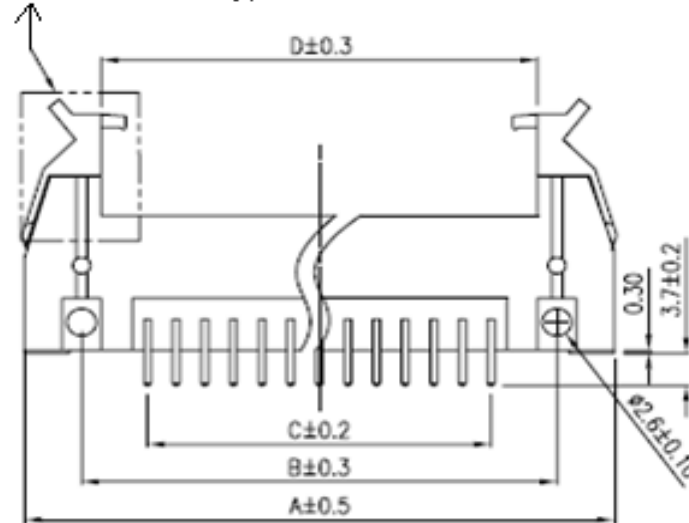


Latch Selection

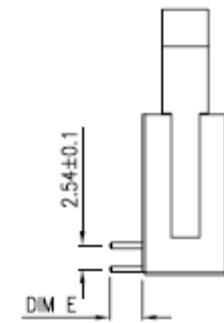
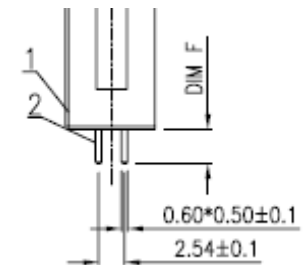


Drawing

Look Latches Type



Pin Dimension



R/A TYPE

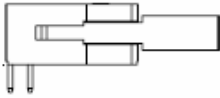
**Box Header w. Latch Pitch
2,54x2,54mm**

Part No.: **T14A013**

Customer:

DRW:	Jason	CHKD	Wilson	MATL:	Wilson	TOLERANCE	Mason	DATE	10.02.2011
APPD:	Schumi			FINISH	Jamy		Sheet No.	1 from 4	

EDCON-COMPONENTS



Ordering Informations

Serie	No. of Pos.	Contact Plating	Material	Color of Body	Pin Length Configuration	Latch Type	ROHS	Packing		
T14A013	XX	G0	PB	BK	A01	L0	R	BU		

XX= 10, 14, 16, 20, 26, 30, 34, 40, 50, 60, 64	G0= Gold Flash	PB= PBT	BK= Black (Standard)	A01 = Look Table (Standard)	L0= Long Latch	N= NO ROHS conform	BU= Bulk Ware
	T0= Tin plated		GY= Gray		S1= Short Latch Type 1	R= ROHS conform	TU= Tube Packing
	GA= 3μ Gold Plating				S2= Short Latch Type 2		
	GB= 5μ Gold Plating						
	GC= 10μ Gold Plating						
	GD= 30μ Gold Plating						
S0= Selectiv Plating Gold Flash / Tin							
			SD= Selectiv Tin/ 5μGold	SD= Selectiv Tin/ 20μ Gold			
			SD= Selectiv Tin/ 10μ Gold Flash	SD= Selectiv Tin/ 30μ Gold			

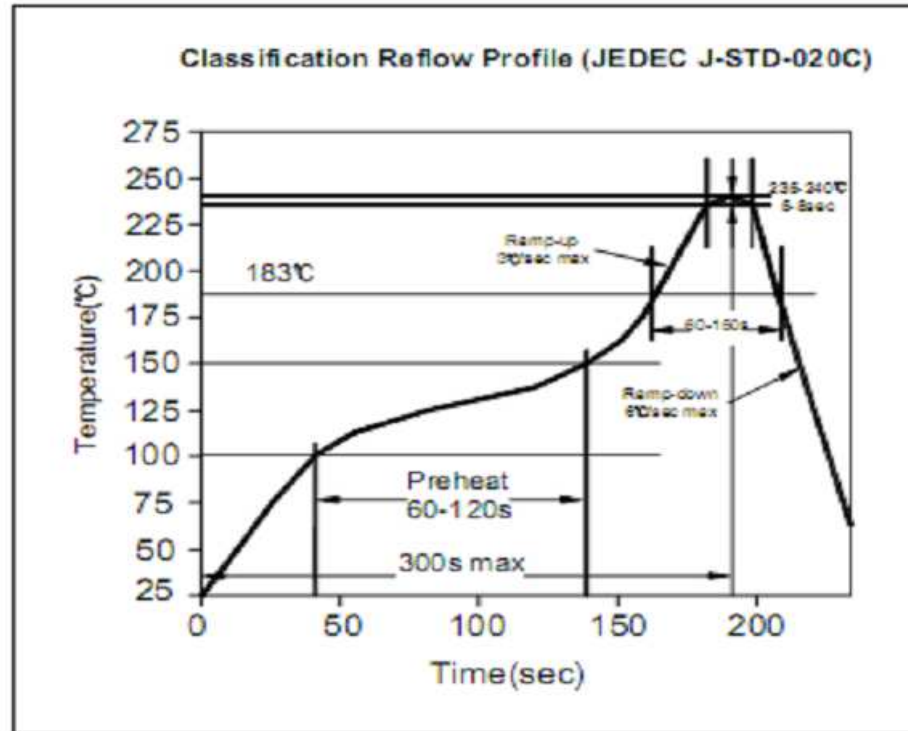
**Box Header w. Latch Pitch
2,54x2,54mm**

Part No.: **T14A013**

DRW:	Jason	CHKD	Wilson	MATL:	Wilson	TOLERANCE	Mason	DATE	10.02.2011	Customer:
APPD:	Schumi			FINISH	Jamy		Sheet No.	3 from 4		



Soldering Profile for Lead Soldering (P.B.T.)



**Box Header w. Latch Pitch
2,54x2,54mm**

Part No.: **T14A013**

DRW:	Jason	CHKD	Wilson	MATL:	Wilson	TOLERANCE	Mason	DATE	10.02.2011	Customer:
APPD:	Schumi			FINISH	Jamy		Sheet No.	4 from 4		