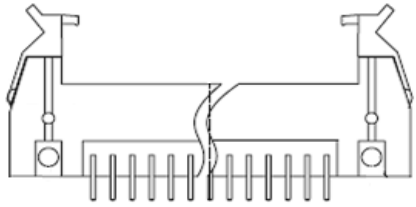


# EDCON-COMPONENTS



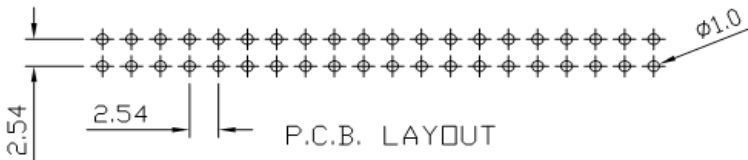
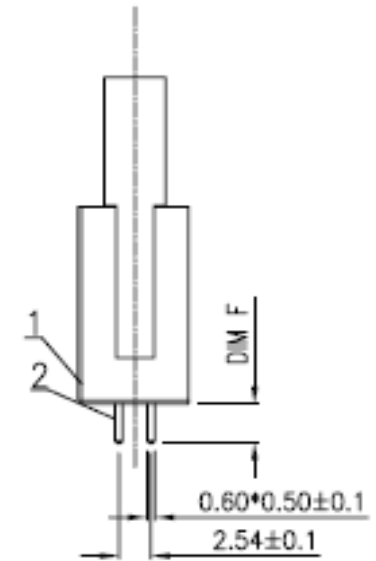
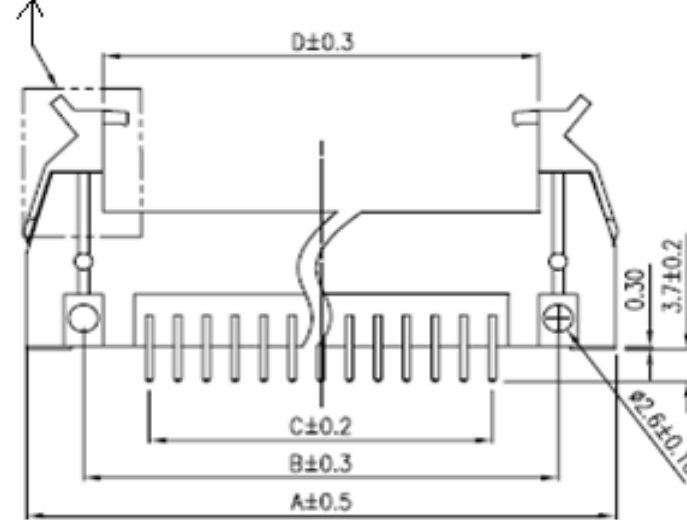
## Specifications

Current Rating: 3,0A  
 Insulation Resistance: 500M Ohm min.  
 Contact Resistance: 20milli Ohm max.  
 Dielectric Voltage: 500V AC for one minute  
 Operating Temperature: . -0°C ~ to +85°C  
 Insulator Material: PBT / Polyester (UL94V-0)

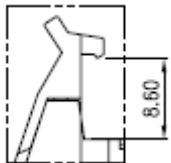
Contact Pin: Brass  
 Contact Plating: Gold all over or Selectiv Ni.  
 Latches: Plastic

## Drawing

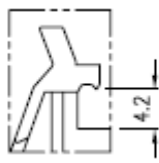
Look Latches Type



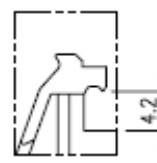
## Latch Selection



L0



S0



S1

**Box Header w. Latch Pitch  
2,54x2,54mm**

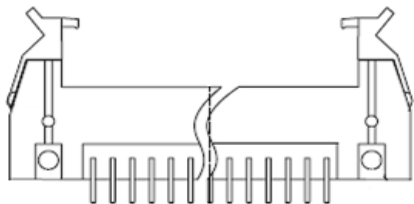
Part No.: **T14A012**

DRW:	Jason	CHKD	Wilson	MATL:	Wilson	TOLERANCE	Mason	DATE	10.02.2010
APPD:	Schumi			FINISH	Jamy		Sheet No.	1 from 4	Customer:

[www.edcon-components.com](http://www.edcon-components.com)

email: [info@edcon-components.com](mailto:info@edcon-components.com)

# EDCON-COMPONENTS



## Pin Code length table free configuration

Dimension ( mm)			
	F		
A01	3,70		
A02			
A03			
A04			
A05			
A06			
A07			
A08			
A09			
A10			
A11			
A12			
A13			
A14			
A15			
A16			
A17			
A18			
A19			
A20			
A21			
A22			

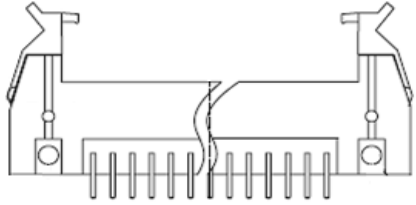
Dimension ( mm)				

Dimension ( mm)				
	A	B	C	D
10	31,92	21,72	10,16	18,22
14	37,00	26,80	15,24	23,30
16	39,54	29,34	17,78	25,84
20	44,62	34,43	22,86	30,92
26	52,24	42,03	30,48	38,54
30	57,32	47,12	35,56	43,62
34	62,40	52,20	40,64	48,70
40	70,02	59,82	48,26	56,32
50	82,72	72,52	60,96	69,02
60	95,42	85,22	73,66	81,72
64	100,50	90,30	78,74	86,60

<b>Box Header w. Latch Pitch 2,54x2,54mm</b>	
Part No.:	<b>T14A012</b>
Customer:	

DRW:	Jason	CHKD	Wilson	MATL:	Wilson	TOLERANCE	Mason	DATE	10.02.2010
APPD:	Schumi			FINISH	Jamy			Sheet No.	2 from 4

# EDCON-COMPONENTS



## Ordering Informations

Serie	No. of Pos.	Contact Plating	Material	Color of Body	Pin Length Configuration	Latch Type	ROHS	Packing		
<b>T14A012</b>	<b>XX</b>	<b>G0</b>	<b>PB</b>	<b>BK</b>	<b>A01</b>	<b>L0</b>	<b>R</b>	<b>BU</b>		

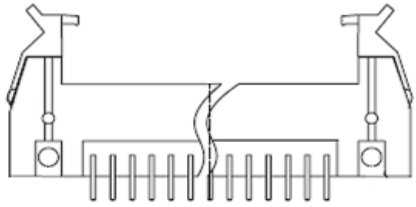
<b>XX=</b> 10, 14, 16, 20, 24, 26, 30, 34, 40, 44, 50, 60, 64	<b>G0=</b> Gold Flash	<b>PB=</b> PBT	<b>BK=</b> Black (Standard)	<b>A01 =</b> Look Table (Standard)	<b>L0 =</b> Long Latch	<b>N=</b> NO ROHS conform	<b>BU=</b> Bulk Ware
	<b>T0=</b> Tin plated		<b>GY=</b> Gray		<b>S0 =</b> Short Latch Type1	<b>R=</b> ROHS conform	
	<b>GA=</b> 3µ Gold Plating				<b>S1 =</b> Short Latch Type 2		
	<b>GB=</b> 5µ Gold Plating						
	<b>GC=</b> 10µ Gold Plating						
	<b>GD=</b> 30µ Gold Plating						
	<b>S0=</b> Selectiv Plating Gold Flash / Tin						
<b>SD=</b> Selectiv Tin/ 5µGold	<b>SD=</b> Selectiv Tin/ 20µ Gold						
<b>SD=</b> Selectiv Tin/ 10µ Gold Flash	<b>SD=</b> Selectiv Tin/ 30µ Gold						

**Box Header w. Latch Pitch  
2,54x2,54mm**

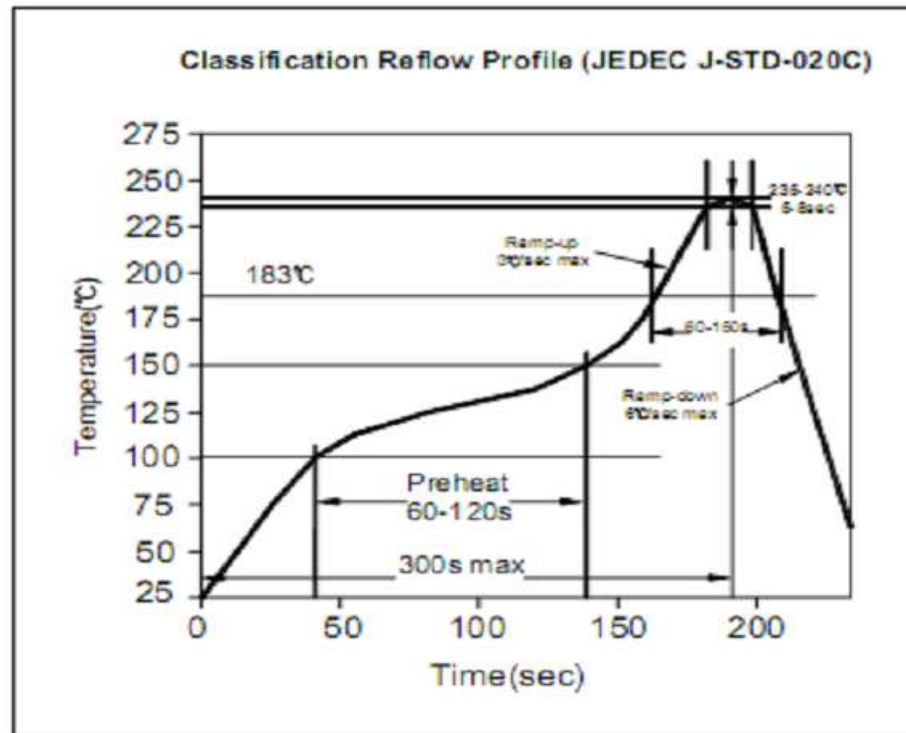
Part No.: **T14A012**

DRW:	Jason	CHKD	Wilson	MATL:	Wilson	TOLERANCE	Mason	DATE	10.02.2010	Customer:
APPD:	Schumi			FINISH	Jamy		Sheet No.	3 from 4		

# EDCON-COMPONENTS



## Soldering Profile for Lead Soldering ( P.B.T. )



**Box Header w. Latch Pitch  
2,54x2,54mm**

Part No.: **T14A012**

DRW:	Jason	CHKD	Wilson	MATL:	Wilson	TOLERANCE	Mason	DATE	10.02.2010	Customer:
APPD:	Schumi			FINISH	Jamy		Sheet No.	4 from 4		