

1

2

3

4

A

B

C

D

A

B

C

D

REV.	DESCRIPTION	DRAWN/DATE	CHECK/DATE	APPROVED/DATE
A	NEW RELEASE PER ECR-D108Z	Stanly 02/20/01'	~	Stanly 02/20/01'
B	REV. PER ECR-01131 Δ x7	Stanly 04/10/01'	~	MAX 04/11/01'
C	REV. PER SZECR-D1364 Δ x3	A.KING 05/29/01'	TOM 5/30/01'	MAX 5/31/01'
D	REV.PER SZECR-D2163 Δ x3	ANDY 03/25/02'	TOM 03/26/02'	MAX 03/27/02'

NOTES :

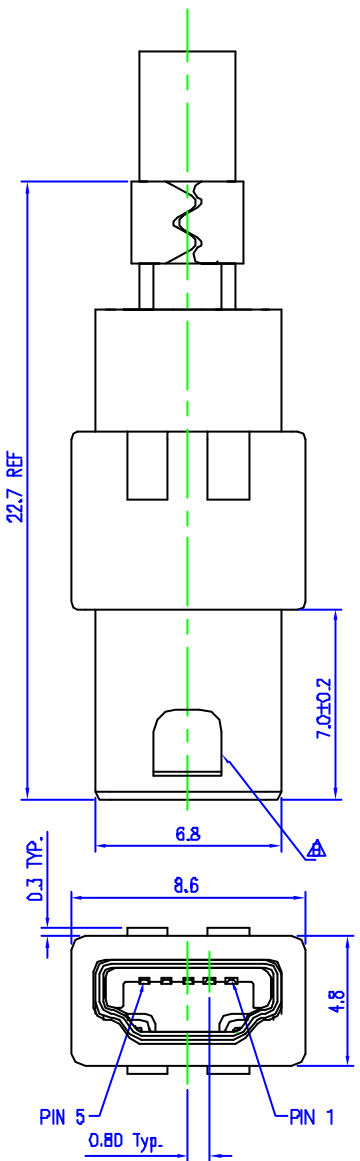
- 1.0. OTHERS :
- 1.1. RECOMMENDED CABLE APPLICATION :
OUTTER DIAMETER APPLICABLE RANGE : ϕ 3.4mm
- 1.2. ALL PARTS PACKAGED UNASSEMBLED
- 1.3. PRODUCT NUMBERING CODE: REFER TO TABLE A


TABLE A : PART NUMBERING CODE

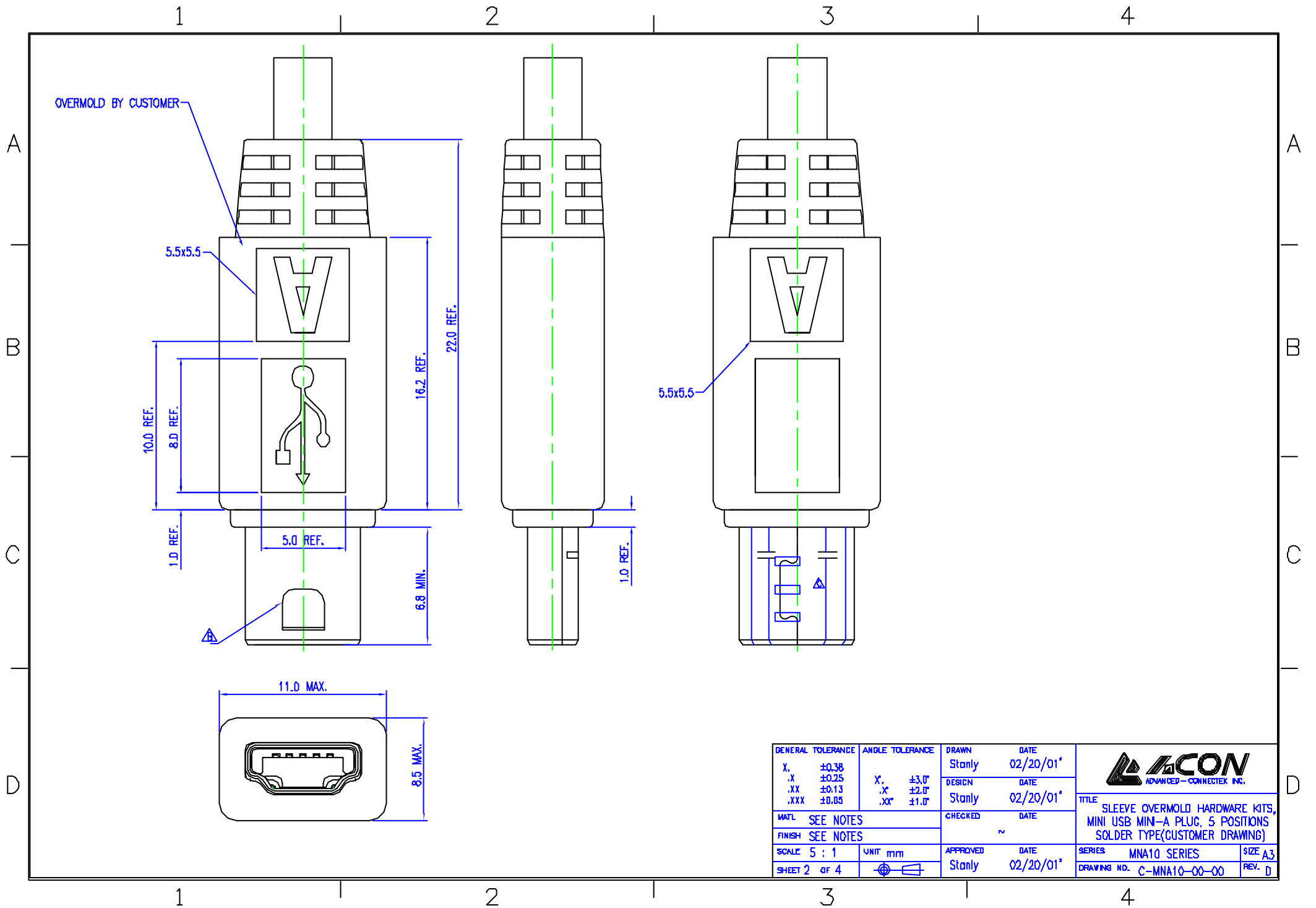
MNA10- 5 * * * * *

① ② ③ ④ ⑤ ⑥ ⑦

- ① PRODUCT:
MNA1D : MINI USB MINI-A PLUG, 5 POSITIONS
SOLDER TYPE, SLEEVE OVERMOLD HARDWARE KITS
- ② POSITIONS:
5: 5 POSITIONS
- ③ COLOR OF INSULATOR:
K: BLACK
 Δ W: WHITE
- ④ CONTACT PLATING:
5: Au 30u"
- ⑤ SHELL PLATING:
2 : NICKEL PLATED(FRONT & BACK SHELL)
- ⑥ CONTACT SOLDERING :
1 : 4 PINS
- ⑦ COLOR OF SLEEVE :
K : BLACK
 Δ a : ABS 純透明(ACN00047)



GENERAL TOLERANCE		ANGLE TOLERANCE		DRAWN DATE		 ADVANCED-CONNECTEK INC.
X.	±0.38	X.	±3.0°	Stanly	02/20/01'	
.X	±0.25	.X	±2.0°	Stanly	02/20/01'	
.XX	±0.13	.X	±1.0°	CHECKED	DATE	SERIES MNA10 SERIES SIZE A3 DRAWING NO. C-MNA10-00-00 REV. D
.XXX	±0.05	.XX		~		
MATERIAL SEE NOTES		UNIT mm		APPROVED	DATE	
FINISH SEE NOTES				Stanly	02/20/01'	
SCALE 5 : 1						
SHEET 1 of 4						



GENERAL TOLERANCE	ANGLE TOLERANCE	DRAWN	DATE
X. ±0.38	X. ±3.0°	Stanly	02/20/01*
.X ±0.25	.X ±2.0°	DESIGN	DATE
.XX ±0.13	.XX ±1.0°	Stanly	02/20/01*
.XXX ±0.05		CHECKED	DATE
MATL SEE NOTES			~
FINISH SEE NOTES		APPROVED	DATE
SCALE 5 : 1	UNIT mm	Stanly	02/20/01*
SHEET 2 of 4			

ACON
ADVANCED - CONNECTEK INC.

TITLE SLEEVE OVERMOLD HARDWARE KITS,
MINI USB MINI-A PLUG, 5 POSITIONS
SOLDER TYPE(CUSTOMER DRAWING)

SERIES MNA10 SERIES SIZE A3
DRAWING NO. C-MNA10-00-00 REV. D

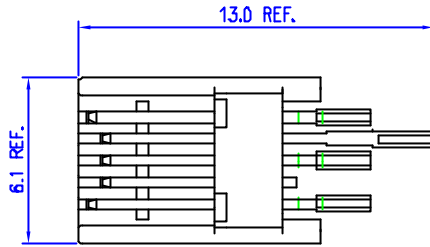
1

2

3

4

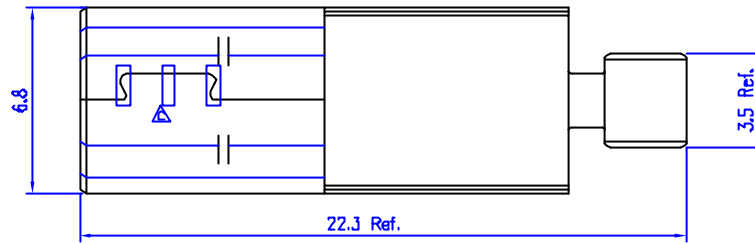
A



HOUSING WITH CONTACT	1	BLACK	MNA10-5K5010	C-MNA10-01-00
PART NAME	QTY/EA	COLOR	PART NUMBER	DRAWING NO.

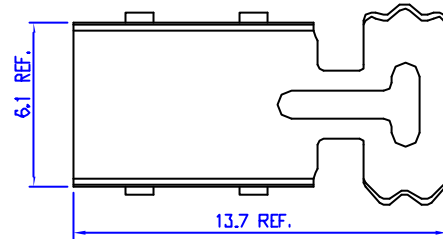


B



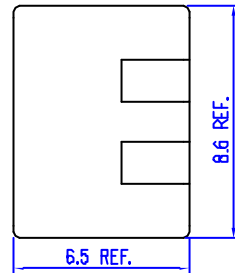
FRONT SHELL	1	NICKEL	S-MNA10-F5200	CS-MNA10-00-00
PART NAME	QTY/EA	FINISH	PART NUMBER	DRAWING NO.

C



BACK SHELL	1	NICKEL	S-MNC10-B5201	CS-MNC10-01-00
		NICKEL	S-MNC10-B5200	CS-MNC10-01-00
PART NAME	QTY/EA	FINISH	PART NUMBER	DRAWING NO.

D



SLEEVE	1	TRANSPARENT	I-MNA10-25d00	CI-MNA10-00-00
		BLACK	I-MNA10-25KDD	CI-MNA10-00-00
PART NAME	QTY/EA	COLOR	PART NUMBER	DRAWING NO.

GENERAL TOLERANCE	ANGLE TOLERANCE	DRAWN	DATE
X, ±0.38		Stanly	02/20/01*
.X ±0.25	X', ±3.0"	DESIGN	DATE
.XX ±0.13	.X' ±2.0"	Stanly	02/20/01*
.XXX ±0.05	.X" ±1.0"	CHECKED	DATE
MATL SEE NOTES		~	
FINISH SEE NOTES		APPROVED	DATE
SCALE 5 : 1	UNIT mm	Stanly	02/20/01*
SHEET 3 of 4			

		TITLE SLEEVE OVERMOLD HARDWARE KITS, MINI USB MINI-A PLUG, 5 POSITIONS SOLDER TYPE(CUSTOMER DRAWING)	
SERIES	MNA10 SERIES	SIZE	A3
DRAWING NO.	C-MNA10-00-00	REV.	0

1

2

3

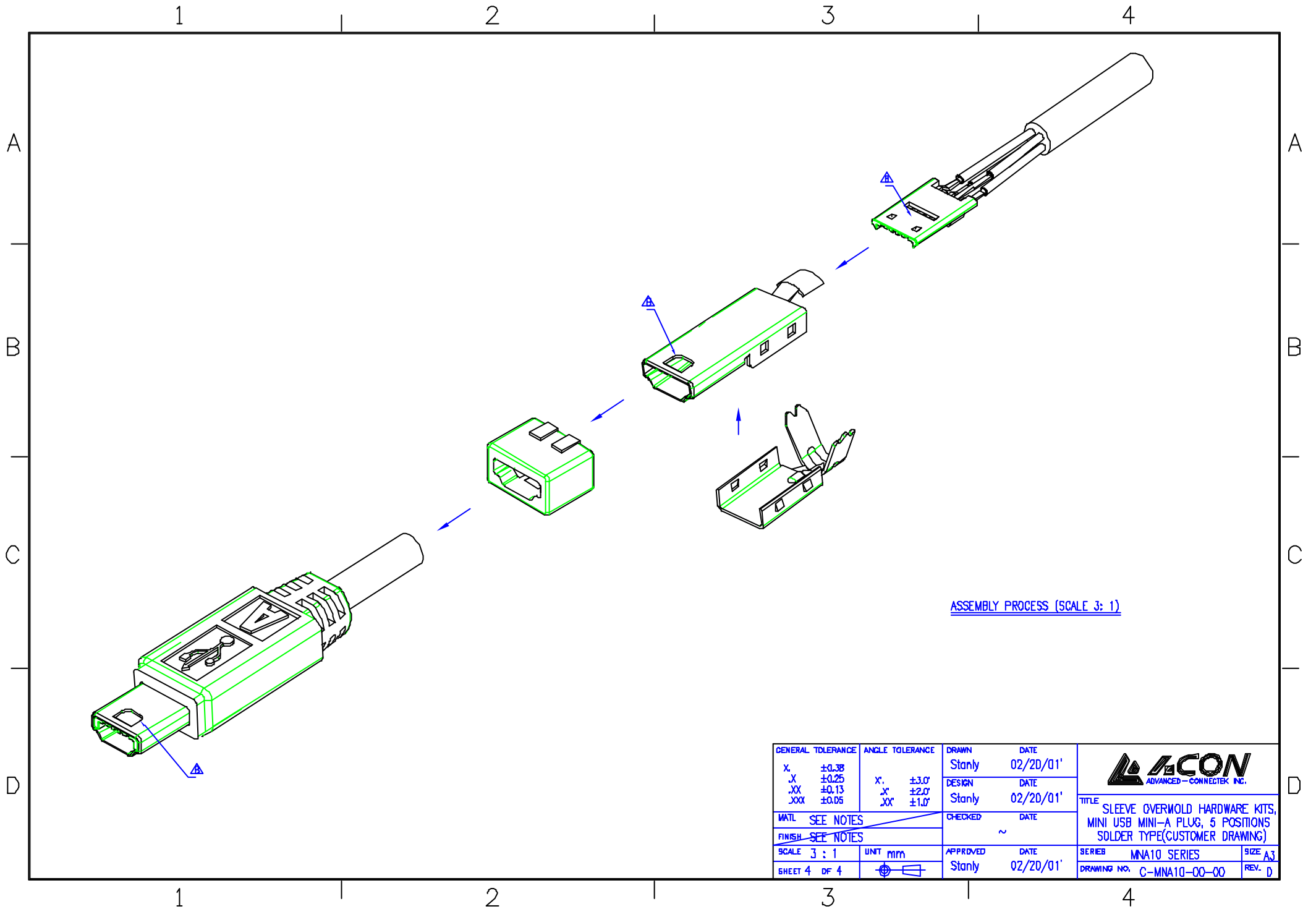
4

A

B

C

D



GENERAL TOLERANCE	ANGLE TOLERANCE	DRAWN	DATE
X. ±0.38		Stanly	02/20/01'
.X ±0.25	X' ±3.0'	DESIGN	DATE
.XX ±0.13	.X' ±2.0'	Stanly	02/20/01'
.XXX ±0.06	.XX' ±1.0'	CHECKED	DATE
MATL SEE NOTES			~
FINISH SEE NOTES		APPROVED	DATE
SCALE 3 : 1	UNIT mm	Stanly	02/20/01'
SHEET 4 OF 4			



TITLE	
SLEEVE OVERMOLD HARDWARE KITS, MINI USB MINI-A PLUG, 5 POSITIONS SOLDER TYPE(CUSTOMER DRAWING)	
SERIES	SIZE
MNA10 SERIES	A3
DRAWING NO.	REV.
C-MNA10-00-00	D