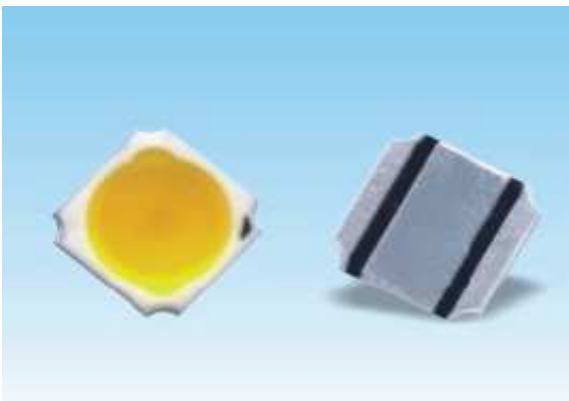


EDCON-COMPONENTS



The Power of LED Light

Specifications



| | |
|--------------|-----------|
| Resin | Silicone |
| Bonding Wire | Ø 1mil Au |
| Lens Color | all |
| Dice | InGaN |
| Resin | Silicone |

Applications

Light sources for general lighting. Most suitable for bulbs and tube lights.
 Various general illumination luminaires
 Backlighting Light sources for various large-size backlighting gives to LED TV
 Vehicles interior lighting: Plane Ship, Car, and Train etc.
 Various special lighting which require long lifespan and high reliability like projector light source.
 Various commercial lighting.



Features

Tiny Size 3,5x3,5x1,0mm
 Ceramic plus metal Material with high thermal conductivity as the substrate.
 Silicon packed , anti UV
 Good airproof performance, high reliability and very low degradation rate
 Very low thermal resistance, with lowest of 3°C/W
 Long life time over 50000HRs
 Full range of white colors available (2700K-900K)
 Most applicable to general lighting sources and luminaires as well as LED-TV backlighting.
 HIGH CRI products
 available from 0,2W to 3Watt

**3535 SMT Ceramic LED
1Watt**

Part No.: **M11B2001**

| | | | | | | | | | |
|-------|--------|------|--------|--------|--------|-----------|-----------|------|------------|
| DRW: | Jason | CHKD | Wilson | MATL: | Wilson | TOLERANCE | Mason | DATE | 10.04.2009 |
| APPD: | Schumi | | | FINISH | Jamy | | Sheet No. | | 1 from 21 |

Customer:

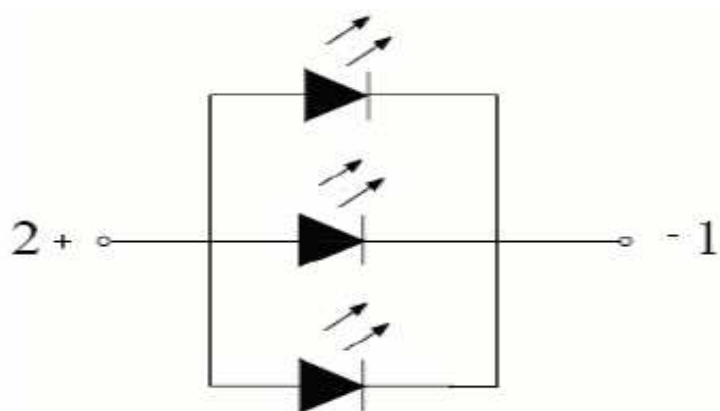
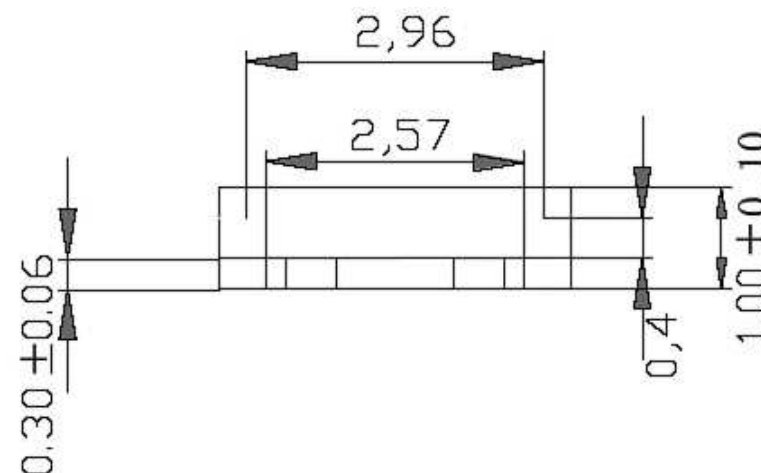
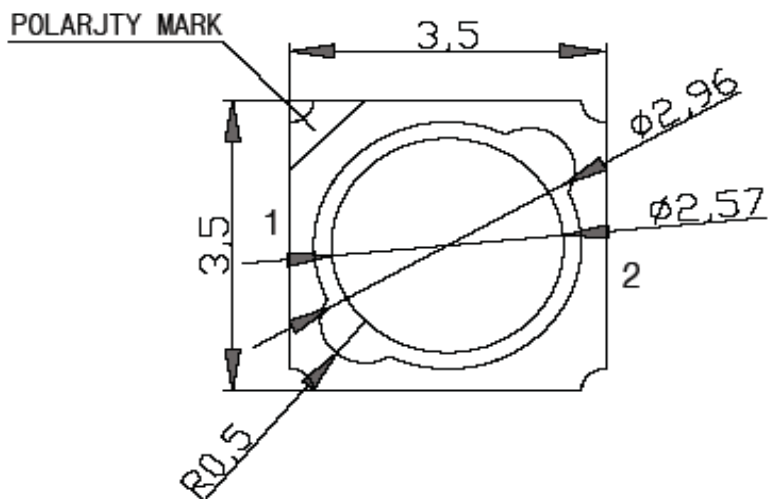
EDCON-COMPONENTS



The Power of LED Light



Package Outline Dimensions (mm)



| | |
|-----------------------------|-----------------|
| 3535 SMT Ceramic LED | |
| 1Watt | |
| Part No.: | M11B2001 |
| Customer: | |

| | | | | | | | | | |
|-------|--------|------|--------|--------|--------|-----------|-----------|-----------|------------|
| DRW: | Jason | CHKD | Wilson | MATL: | Wilson | TOLERANCE | Mason | DATE | 10.04.2009 |
| APPD: | Schumi | | | FINISH | Jamy | | Sheet No. | 2 from 21 | |

www.edcon-components.com

email: info@edcon-components.com

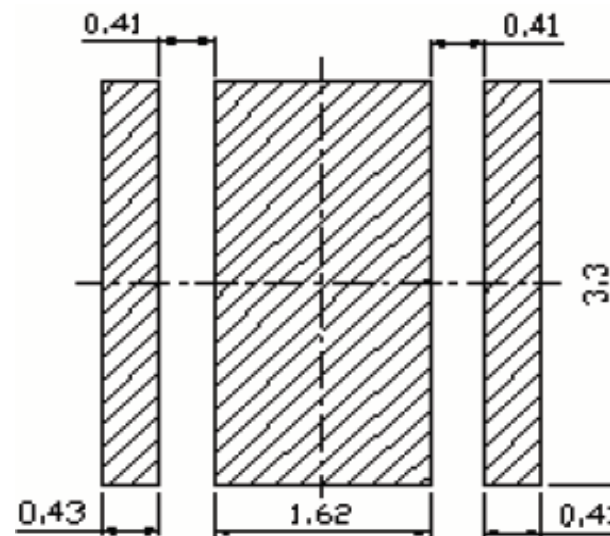
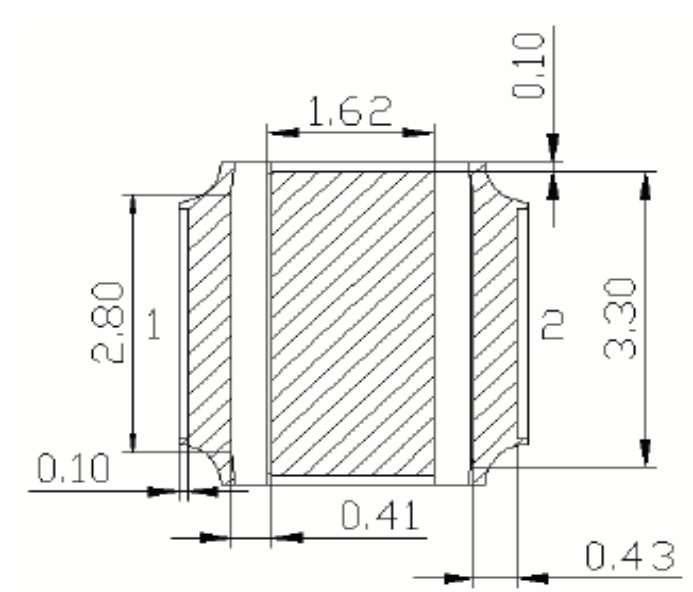
EDCON-COMPONENTS



The Power of LED Light



Package Outline Dimensions (mm)



**3535 SMT Ceramic LED
1Watt**

Part No.: **M11B2001**

| | | | | | | | | | |
|-------|--------|------|--------|--------|--------|-----------|-----------|-----------|------------|
| DRW: | Jason | CHKD | Wilson | MATL: | Wilson | TOLERANCE | Mason | DATE | 10.04.2009 |
| APPD: | Schumi | | | FINISH | Jamy | | Sheet No. | 3 from 21 | |

Customer:

EDCON-COMPONENTS



The Power of LED Light



Absolute Maximum Ratings of Color White, Royla Blue, Blue, Green

| Characteristics (Ta=25°C) | Unit | Min | Typ | Max. |
|--|-------|-----|---------|------|
| Thermal Resistance, junction to solder point | °C/W | 3 | 4 | |
| Temperature coefficient of voltage | mV/°C | | -.5.0 | |
| ESD cClassification (HBM per Mil-Std-883D) | | | Class 2 | |
| DC Forward Current - white ≥ 5000K | mA | | | 700 |
| DC pulse Current (@ 1KHz, 10% duty cycle) | mA | | | 1 |
| Reverse Voltage | V | | | 5 |
| Forward Voltage (@75mA) | V | | 3,4 | 3,8 |
| Forward Voltage (@60mA) | V | | 3,6 | |
| LED Junction Temperature | °C | | | 150 |

Electro Optical Characteristics (Ta=25°C)

| Parameter | Symbol | Min | Typ. | Max. | Unit | Condition |
|-----------------|---------|-----|------|------|------|-----------|
| Viewing Angle | 2 Ø 1/2 | | 120 | | deg | If=350mA |
| Reverse Current | IR | | | 50 | µA | VR=5V |

**3535 SMT Ceramic LED
1Watt**

Part No.: **M11B2001**

| | | | | | | | | | |
|-------|--------|------|--------|--------|--------|-----------|-----------|------|------------|
| DRW: | Jason | CHKD | Wilson | MATL: | Wilson | TOLERANCE | Mason | DATE | 10.04.2009 |
| APPD: | Schumi | | | FINISH | Jamy | | Sheet No. | | 4 from 21 |

Customer:

EDCON-COMPONENTS



The Power of LED Light



Absolute Maximum Ratings of Color Amber, Red

| Characteristics (Ta=25°C) | Unit | Min | Typ | Max. |
|--|-------|-----|---------|------|
| Thermal Resistance, junction to solder point | °C/W | 4 | 5 | |
| Temperature coefficient of voltage | mV/°C | | -3.0 | |
| ESD cClassification (HBM per Mil-Std-883D) | | | Class 2 | |
| DC Forward Current - white ≥ 5000K | mA | | | 500 |
| DC pulse Current (@ 1KHz, 10% duty cycle) | mA | | | 1 |
| Reverse Voltage | V | | | 5 |
| Forward Voltage (@75mA) | V | | 2,2 | 2,6 |
| Forward Voltage (@60mA) | V | | 2,4 | 2,8 |
| LED Junction Temperature | °C | | | 150 |

Electro Optical Characteristics (Ta=25°C)

| Parameter | Symbol | Min | Typ. | Max. | Unit | Condition |
|-----------------|---------|-----|------|------|------|-----------|
| Viewing Angle | 2 Ø 1/2 | | 120 | | deg | If=350mA |
| Reverse Current | IR | | | 50 | µA | VR=5V |

**3535 SMT Ceramic LED
1Watt**

Part No.: **M11B2001**

| | | | | | | | | | |
|-------|--------|------|--------|--------|--------|-----------|-----------|------|------------|
| DRW: | Jason | CHKD | Wilson | MATL: | Wilson | TOLERANCE | Mason | DATE | 10.04.2009 |
| APPD: | Schumi | | | FINISH | Jamy | | Sheet No. | | 5 from 21 |

Customer:

EDCON-COMPONENTS



The Power of LED Light



Bin Range of Luminous Intensity

| Color | Dominant Wavelength (nm) I= 60mA | | Luminous Flux (lm) I=350mA | | |
|------------|----------------------------------|-----|----------------------------|-----|------|
| | Min | Max | Group | Min | Type |
| Royal Blue | 455 | 465 | D | 15 | 18 |
| Blue | 465 | 475 | D | 15 | 18 |
| Green | 515 | 535 | H2 | 42 | 49,0 |
| Amber | 585 | 595 | E/F | 18 | 22 |
| Red | 620 | 635 | G2 | 28 | 35 |

| Color | CCT Range | | Luminous Flux (lm) I=350mA | | |
|-------------|-----------|-------|----------------------------|-----|------|
| | Min | Max | Group | Min | Type |
| Daylight Wh | 5000K | 7000K | J2 | 60 | 70 |
| | | | J3 | 70 | 80 |
| | | | K2 | 80 | 90 |
| Nature Wh | 3500K | 5000K | H3 | 50 | 60 |
| | | | J2 | 60 | 70 |
| Warm White | 2700K | 3500K | H3 | 50 | 60 |
| | | | J2 | 60 | 70 |

Please take Luminous Flux as standard parameter, Luminous Intensity is only for reference.
 Tolerance of Luminous Intensity is +/-15%
 Leds with Ra under 75 are not available for this product.

| | |
|---------------------------------------|-----------------|
| 3535 SMT Ceramic LED 1Watt | |
| Part No.: | M11B2001 |
| Customer: | |

| | | | | | | | | | |
|-------|--------|------|--------|--------|--------|-----------|-----------|-----------|------------|
| DRW: | Jason | CHKD | Wilson | MATL: | Wilson | TOLERANCE | Mason | DATE | 10.04.2009 |
| APPD: | Schumi | | | FINISH | Jamy | | Sheet No. | 6 from 21 | |

EDCON-COMPONENTS



The Power of LED Light



Color Bin Limit (IF=60mA) Bin Range of Wavelength

Bin Range of Forward Voltage

| Blue | | Bluish Green | | Green | | Orange | | | |
|------|---------|--------------|-----------|-------|-----------|---------------|-----------|------------|---------|
| Code | nm | Code | nm | Code | nm | Code | nm | | |
| P1 | 380~385 | B1 | 450~455 | G1 | 490~492,5 | E1 | 564~566 | A1 | 600~605 |
| P2 | 385~390 | B2 | 455~460 | G2 | 492,5~495 | E2 | 566~568 | A2 | 605~610 |
| P3 | 390~395 | B3 | 460~462,5 | G3 | 495~497,5 | E3 | 568~570 | A3 | 610~615 |
| P4 | 395~400 | B4 | 462,5~465 | G4 | 497,5~500 | E4 | 570~572 | | |
| P5 | 400~405 | B5 | 465~476,5 | G5 | 500~502,5 | E5 | 572~574 | | |
| P6 | 405~410 | B6 | 467,5~470 | G6 | 502,5~505 | E6 | 574~675 | | |
| P7 | 410~415 | B7 | 470~472,5 | G7 | 505~507,5 | | | | |
| | | B8 | 472,5~475 | G8 | 507,5~510 | Yellow | | Red | |
| | | B9 | 475~477,5 | G9 | 510~512,5 | Y1 | 580~582,5 | R1 | 615-620 |
| | | B10 | 477,5~480 | G10 | 512,5~515 | Y2 | 582,5~585 | R2 | 620-625 |
| | | B11 | 480~482,5 | G11 | 515~517,5 | Y3 | 585~587,5 | R3 | 625~630 |
| | | B12 | 482,5~485 | G12 | 517,5~520 | Y4 | 587,5~590 | R4 | 630~635 |
| | | B13 | 485~487,5 | G13 | 520~522,5 | Y5 | 590~592,5 | R5 | 635~640 |
| | | | | G14 | 522,5~525 | Y6 | 592,5~595 | R6 | 640~645 |
| | | | | G15 | 525~527,5 | Y7 | 595~597,5 | | |
| | | | | G16 | 527,5~530 | Y8 | 597,5~600 | | |
| | | | | G17 | 530~532,5 | | | | |
| | | | | G18 | 532,5~535 | | | | |
| | | | | G19 | 525~537,5 | | | | |
| | | | | G20 | 537,5~540 | | | | |
| | | | | G21 | 540~542,5 | | | | |

| Red, Orange, Amber | | |
|--------------------|------------|------------|
| Group | Min. VF(V) | Max. VF(V) |
| V1 | 1,6 | 1,8 |
| V2 | 1,8 | 2,0 |
| V3 | 2,0 | 2,2 |
| V4 | 2,2 | 2,4 |
| V5 | 2,4 | 2,6 |
| V0 | 2,6 | 2,8 |

| Blue, Green, White | | |
|--------------------|------------|------------|
| Group | Min. VF(V) | Max. VF(V) |
| V6 | 2,8 | 3,0 |
| V7 | 3,0 | 3,2 |
| V8 | 3,2 | 3,4 |
| V9 | 3,4 | 3,6 |
| V10 | 3,6 | 3,8 |
| V11 | 3,8 | 4,0 |

**3535 SMT Ceramic LED
1Watt**

Part No.: **M11B2001**

| | | | | | | | | | |
|-------|--------|------|--------|--------|--------|-----------|-----------|-----------|------------|
| DRW: | Jason | CHKD | Wilson | MATL: | Wilson | TOLERANCE | Mason | DATE | 10.04.2009 |
| APPD: | Schumi | | | FINISH | Jamy | | Sheet No. | 7 from 21 | |

Customer:

EDCON-COMPONENTS



The Power of LED Light



CCT Range of White

| Region | CCT Range | | X | Y | Region | CCT Range | | X | Y |
|--------|-----------|--------|-------|-------|--------|-----------|-------|--------|-------|
| | Min. | Max. | | | | Min. | Max. | | |
| CK | 8200K | 10000K | 0,283 | 0,284 | CB | 7000K | 8200K | 0,306 | 0,322 |
| | | | 0,295 | 0,297 | | | | 0,308 | 0,311 |
| | | | 0,298 | 0,288 | | | | 0,295 | 0,297 |
| | | | 0,287 | 0,276 | | | | 0,292 | 0,306 |
| CA | 8200K | 10000K | 0,292 | 0,306 | CE | 7000K | 8200K | 0,301 | 0,342 |
| | | | 0,295 | 0,297 | | | | 0,306 | 0,322 |
| | | | 0,283 | 0,284 | | | | 0,292 | 0,306 |
| | | | 0,279 | 0,291 | | | | 0,287 | 0,321 |
| CM | 7000K | 8200K | 0,295 | 0,297 | | | | | |
| | | | 0,308 | 0,311 | | | | | |
| | | | 0,310 | 0,300 | | | | | |
| | | | 0,298 | 0,288 | | | | | |
| Region | CCT Range | | X | Y | Region | CCT Range | | X | Y |
| | Min. | Max. | | | | Min. | Max. | | |
| DN | 6300K | 7000K | 0,308 | 0,311 | DG3 | 5700K | 6000K | 0,329 | 0,369 |
| | | | 0,317 | 0,319 | | | | 0,329 | 0,357 |
| | | | 0,318 | 0,308 | | | | 0,322 | 0,355 |
| | | | 0,310 | 0,300 | | | | 0,322 | 0,362 |
| DC | 6300K | 7000K | 0,316 | 0,332 | DG4 | 6000K | 6300K | 0,322 | 0,362 |
| | | | 0,317 | 0,319 | | | | 0,322 | 0,350 |
| | | | 0,308 | 0,311 | | | | 0,315 | 0,344 |
| | | | 0,306 | 0,322 | | | | 0,314 | 0,355 |
| DF | 6300K | 7000K | 0,314 | 0,355 | DJ1 | 5300K | 5700K | 0,329 | 0,330 |
| | | | 0,316 | 0,332 | | | | 0,329 | 0,345 |
| | | | 0,306 | 0,322 | | | | 0,3375 | 0,352 |
| | | | 0,301 | 0,342 | | | | 0,3365 | 0,336 |

**3535 SMT Ceramic LED
1Watt**

Part No.: **M11B2001**

| | | | | | | | | | |
|-------|--------|------|--------|--------|--------|-----------|-----------|------|------------|
| DRW: | Jason | CHKD | Wilson | MATL: | Wilson | TOLERANCE | Mason | DATE | 10.04.2009 |
| APPD: | Schumi | | | FINISH | Jamy | | Sheet No. | | 8 from 21 |

Customer:
email: info@edcon-components.com

EDCON-COMPONENTS



The Power of LED Light



CCT Range of White

| Region | CCT Range | | X | Y | Region | CCT Range | | X | Y |
|--------|-----------|-------|-------|--------|--------|-----------|-------|--------|--------|
| | Min. | Max. | | | | Min. | Max. | | |
| DP | 5700K | 6300K | 0,317 | 0,319 | DJ2 | 5000K | 5300K | 0,3365 | 0,336 |
| | | | 0,329 | 0,33 | | | | 0,3375 | 0,352 |
| | | | 0,329 | 0,318 | | | | 0,346 | 0,359 |
| | | | 0,318 | 0,308 | | | | 0,344 | 0,342 |
| DD | 5700K | 6300K | 0,329 | 0,345 | DH1 | 5300K | 5700K | 0,329 | 0,345 |
| | | | 0,329 | 0,33 | | | | 0,329 | 0,369 |
| | | | 0,317 | 0,319 | | | | 0,3385 | 0,3765 |
| | | | 0,316 | 0,332 | | | | 0,3375 | 0,352 |
| DGI | 6000K | 6300K | 0,322 | 0,355 | DH2 | 5000K | 5300K | 0,3375 | 0,352 |
| | | | 0,322 | 0,3385 | | | | 0,3385 | 0,3765 |
| | | | 0,316 | 0,332 | | | | 0,348 | 0,384 |
| | | | 0,315 | 0,3435 | | | | 0,346 | 0,359 |
| DG2 | 5700K | 6000K | 0,329 | 0,357 | | | | | |
| | | | 0,329 | 0,345 | | | | | |
| | | | 0,322 | 0,3385 | | | | | |
| | | | 0,322 | 0,350 | | | | | |

**3535 SMT Ceramic LED
1Watt**

Part No.: **M11B2001**

| | | | | | | | | | |
|-------|--------|------|--------|--------|--------|-----------|-----------|-----------|------------|
| DRW: | Jason | CHKD | Wilson | MATL: | Wilson | TOLERANCE | Mason | DATE | 10.04.2009 |
| APPD: | Schumi | | | FINISH | Jamy | | Sheet No. | 9 from 21 | |

Customer:

EDCON-COMPONENTS



The Power of LED Light



CCT Range of White

| Region | CCT Range | | X | Y | Region | CCT Range | | X | Y |
|--------|-----------|-------|--------|--------|--------|-----------|-------|--------|--------|
| | Min. | Max. | | | | Min. | Max. | | |
| NA | 4750K | 5000K | 0,3451 | 0,3554 | NG | 3950K | 4250K | 0,3670 | 0,3578 |
| | | | 0,3533 | 0,3620 | | | | 0,3702 | 0,3722 |
| | | | 0,3515 | 0,3487 | | | | 0,3825 | 0,3798 |
| | | | 0,3440 | 0,3428 | | | | 0,3783 | 0,3646 |
| NB | 4750K | 5000K | 0,3463 | 0,3687 | NH | 3950K | 4250K | 0,3702 | 0,3722 |
| | | | 0,3551 | 0,3760 | | | | 0,3736 | 0,3874 |
| | | | 0,3533 | 0,3620 | | | | 0,3869 | 0,3958 |
| | | | 0,3451 | 0,3554 | | | | 0,3825 | 0,3798 |
| NC | 4500K | 4750K | 0,3512 | 0,3465 | NJ | 3700K | 3950K | 0,3783 | 0,3646 |
| | | | 0,3529 | 0,3597 | | | | 0,3825 | 0,3798 |
| | | | 0,3615 | 0,3659 | | | | 0,3950 | 0,3875 |
| | | | 0,3590 | 0,3521 | | | | 0,3898 | 0,3716 |
| ND | 4500K | 4750K | 0,3529 | 0,3597 | NK | 3700K | 3950K | 0,3825 | 0,3798 |
| | | | 0,3548 | 0,3736 | | | | 0,3869 | 0,3958 |
| | | | 0,3641 | 0,3804 | | | | 0,4006 | 0,4044 |
| | | | 0,3614 | 0,3659 | | | | 0,3950 | 0,3875 |
| NE | 4250K | 4500K | 0,3590 | 0,3521 | NM | 3450K | 3700K | 0,3889 | 0,3690 |
| | | | 0,3615 | 0,3659 | | | | 0,3941 | 0,3848 |
| | | | 0,3702 | 0,3722 | | | | 0,4080 | 0,3916 |
| | | | 0,3670 | 0,3578 | | | | 0,4017 | 0,3751 |
| NF | 4250K | 4500K | 0,3615 | 0,3659 | NN | 3450K | 3700K | 0,3941 | 0,3848 |
| | | | 0,3641 | 0,3804 | | | | 0,3996 | 0,4015 |
| | | | 0,3736 | 0,3874 | | | | 0,4146 | 0,4089 |
| | | | 0,3702 | 0,3722 | | | | 0,4080 | 0,3916 |

**3535 SMT Ceramic LED
1Watt**

Part No.: **M11B2001**

| | | | | | | | | | | |
|-------|--------|------|--------|--------|--------|-----------|-----------|------------|------------|-----------|
| DRW: | Jason | CHKD | Wilson | MATL: | Wilson | TOLERANCE | Mason | DATE | 10.04.2009 | Customer: |
| APPD: | Schumi | | | FINISH | Jamy | | Sheet No. | 10 from 21 | | |

EDCON-COMPONENTS



The Power of LED Light



CCT Range of White

| Region | CCT Range | | X | Y | Region | CCT Range | | X | Y |
|--------|-----------|-------|--------|--------|--------|-----------|-------|--------|--------|
| | Min. | Max. | | | | Min. | Max. | | |
| WA | 3200K | 3450K | 0,4017 | 0,3751 | WF | 2850K | 3050K | 0,4342 | 0,4028 |
| | | | 0,4080 | 0,3916 | | | | 0,4430 | 0,4212 |
| | | | 0,4221 | 0,3984 | | | | 0,4562 | 0,4260 |
| | | | 0,4147 | 0,3814 | | | | 0,4465 | 0,4071 |
| WB | 3200K | 3450K | 0,4080 | 0,3916 | WG | 2720K | 2850K | 0,4373 | 0,3893 |
| | | | 0,4146 | 0,4089 | | | | 0,4465 | 0,4071 |
| | | | 0,4299 | 0,4165 | | | | 0,4582 | 0,4099 |
| | | | 0,4221 | 0,3984 | | | | 0,4483 | 0,3919 |
| WC | 3050K | 3200K | 0,4147 | 0,3814 | WH | 2720K | 2850K | 0,4465 | 0,4071 |
| | | | 0,4221 | 0,3984 | | | | 0,4562 | 0,4260 |
| | | | 0,4342 | 0,4028 | | | | 0,4687 | 0,4289 |
| | | | 0,4259 | 0,3853 | | | | 0,4582 | 0,4099 |
| WD | 3050K | 3200K | 0,4221 | 0,3984 | WJ | 2500K | 2720K | 0,4483 | 0,3919 |
| | | | 0,4299 | 0,4165 | | | | 0,4582 | 0,4099 |
| | | | 0,4430 | 0,4212 | | | | 0,4700 | 0,4126 |
| | | | 0,4342 | 0,4028 | | | | 0,4593 | 0,3944 |
| WE | 2850K | 3050K | 0,4259 | 0,3853 | WK | 2500K | 2720K | 0,4582 | 0,4099 |
| | | | 0,4342 | 0,4028 | | | | 0,4687 | 0,4289 |
| | | | 0,4465 | 0,4071 | | | | 0,4814 | 0,4319 |
| | | | 0,4373 | 0,3893 | | | | 0,4700 | 0,4126 |

**3535 SMT Ceramic LED
1Watt**

Part No.: **M11B2001**

| | | | | | | | | | |
|-------|--------|------|--------|--------|--------|-----------|-----------|------|------------|
| DRW: | Jason | CHKD | Wilson | MATL: | Wilson | TOLERANCE | Mason | DATE | 10.04.2009 |
| APPD: | Schumi | | | FINISH | Jamy | | Sheet No. | | 11 from 21 |

Customer:

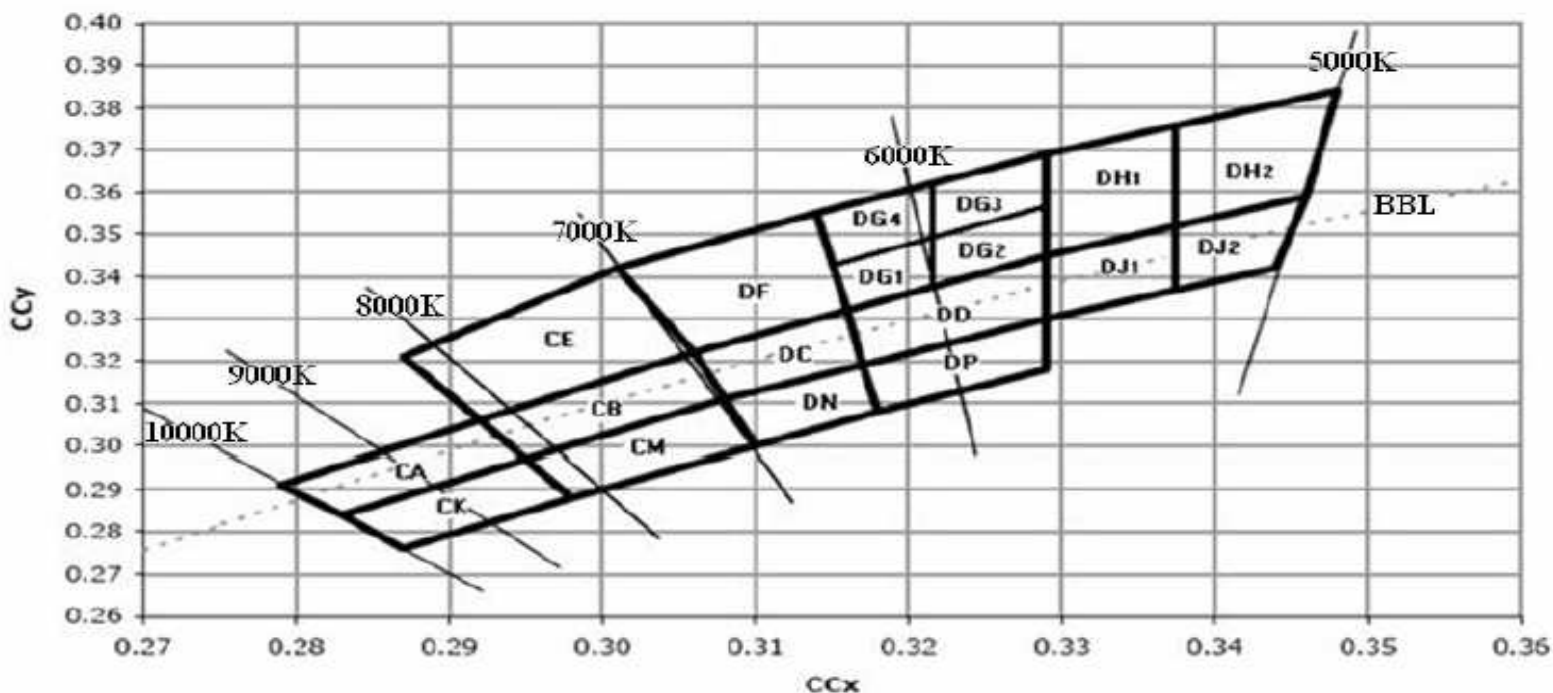
EDCON-COMPONENTS



The Power of LED Light



Characteristics



| | |
|---------------------------------------|-----------------|
| 3535 SMT Ceramic LED 1Watt | |
| Part No.: | M11B2001 |
| Customer: | |

| | | | | | | | | | |
|-------|--------|------|--------|--------|--------|-----------|-----------|------------|------------|
| DRW: | Jason | CHKD | Wilson | MATL: | Wilson | TOLERANCE | Mason | DATE | 10.04.2009 |
| APPD: | Schumi | | | FINISH | Jamy | | Sheet No. | 12 from 21 | |

www.edcon-components.com

email: info@edcon-components.com

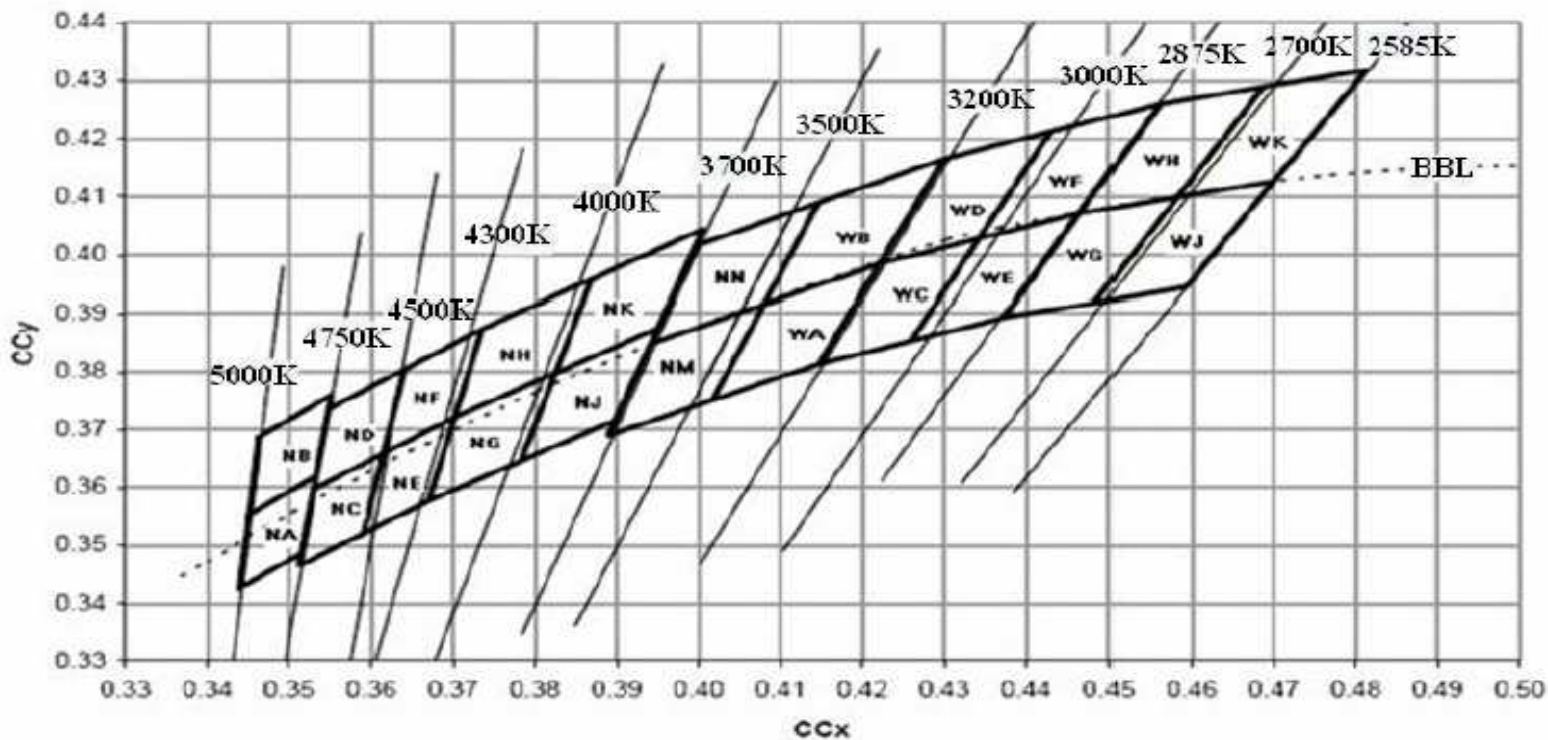
EDCON-COMPONENTS



The Power of LED Light



Characteristics



| | |
|---------------------------------------|-----------------|
| 3535 SMT Ceramic LED 1Watt | |
| Part No.: | M11B2001 |
| Customer: | |

| | | | | | | | | | |
|-------|--------|------|--------|--------|--------|-----------|-----------|------------|------------|
| DRW: | Jason | CHKD | Wilson | MATL: | Wilson | TOLERANCE | Mason | DATE | 10.04.2009 |
| APPD: | Schumi | | | FINISH | Jamy | | Sheet No. | 13 from 21 | |

www.edcon-components.com

email: info@edcon-components.com

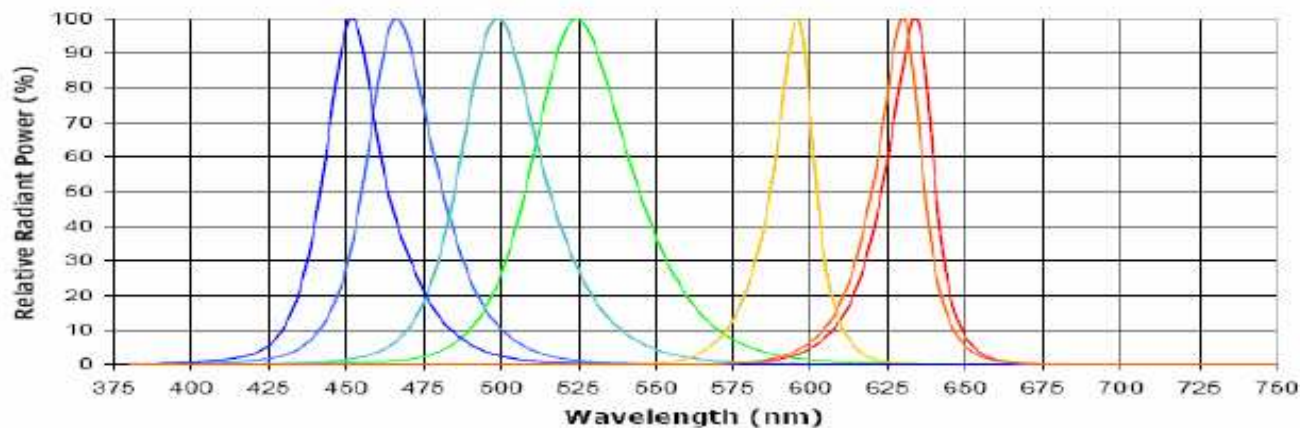
EDCON-COMPONENTS



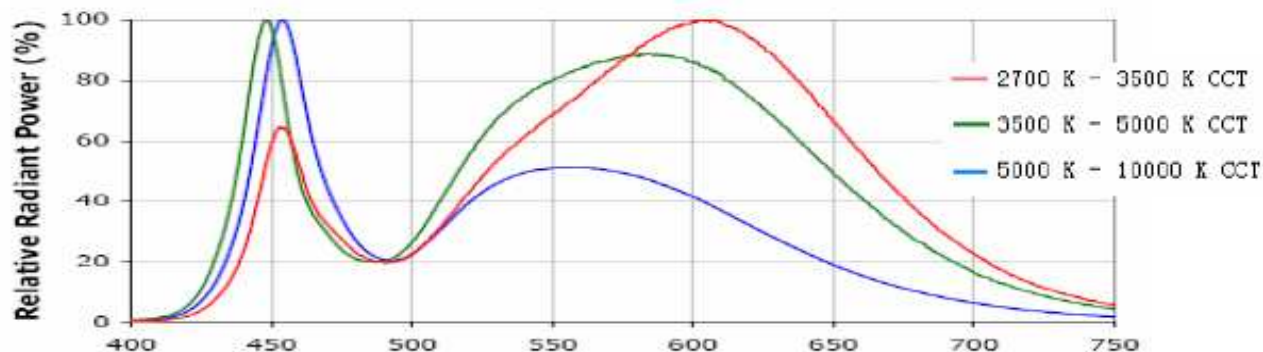
The Power of LED Light



Characteristics



Royal Blue, Blue, Green, Amber, Orange, Red



White

| | |
|-----------------------------|-----------------|
| 3535 SMT Ceramic LED | |
| 1Watt | |
| Part No.: | M11B2001 |
| Customer: | |

| | | | | | | | | | |
|-------|--------|------|--------|--------|--------|-----------|-----------|------------|------------|
| DRW: | Jason | CHKD | Wilson | MATL: | Wilson | TOLERANCE | Mason | DATE | 10.04.2009 |
| APPD: | Schumi | | | FINISH | Jamy | | Sheet No. | 14 from 21 | |

www.edcon-components.com

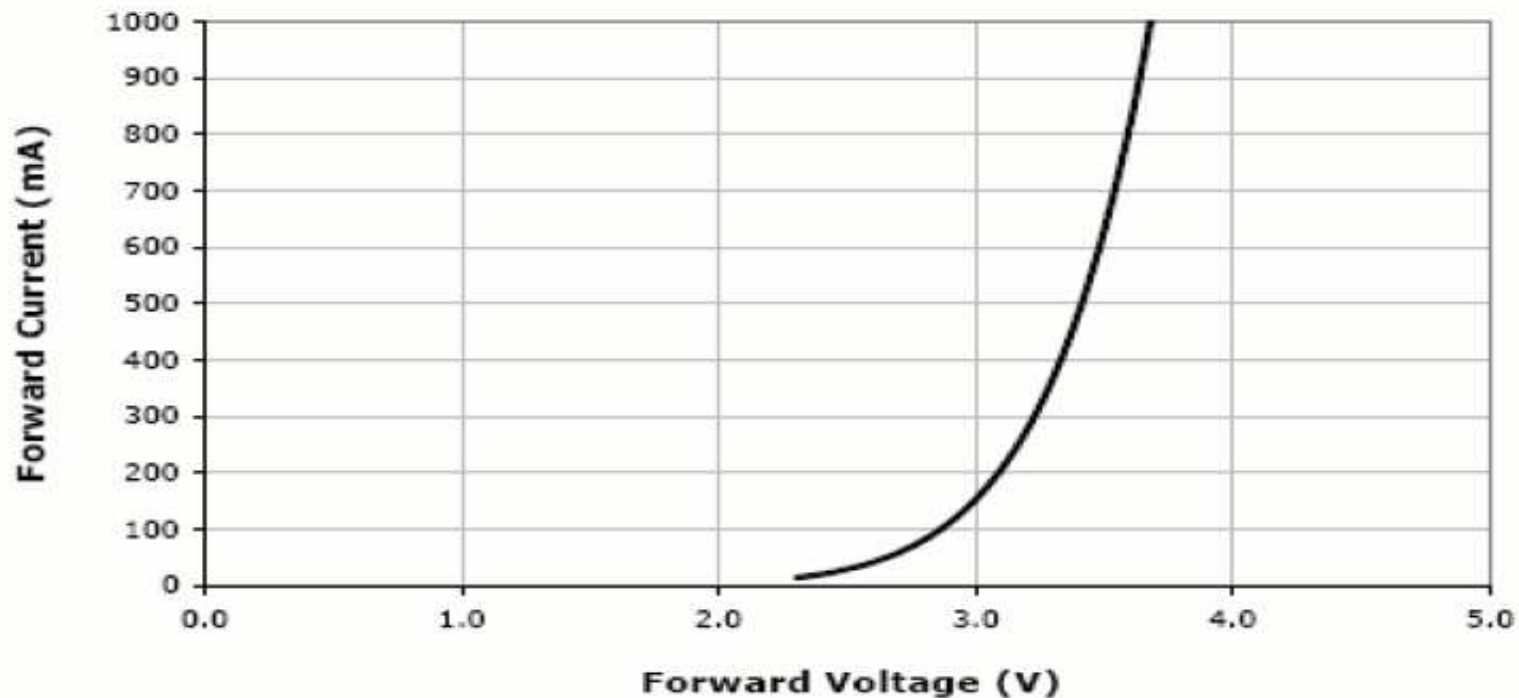
email: info@edcon-components.com



The Power of LED Light



Characteristics



Royal Blue , Blue, Green, White

| | |
|---------------------------------------|-----------------|
| 3535 SMT Ceramic LED 1Watt | |
| Part No.: | M11B2001 |
| Customer: | |

| | | | | | | | | | |
|-------|--------|------|--------|--------|--------|-----------|-----------|------------|------------|
| DRW: | Jason | CHKD | Wilson | MATL: | Wilson | TOLERANCE | Mason | DATE | 10.04.2009 |
| APPD: | Schumi | | | FINISH | Jamy | | Sheet No. | 15 from 21 | |

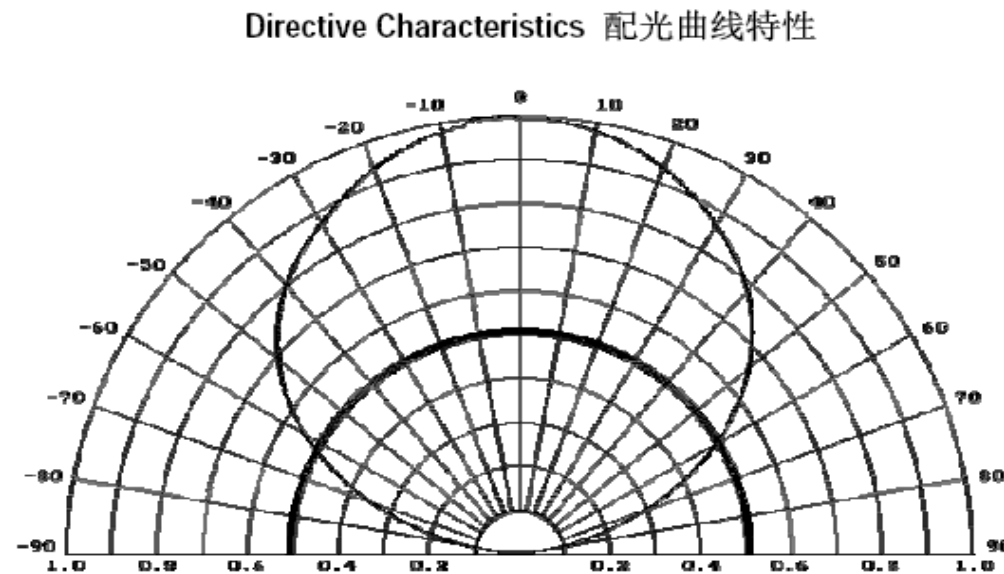
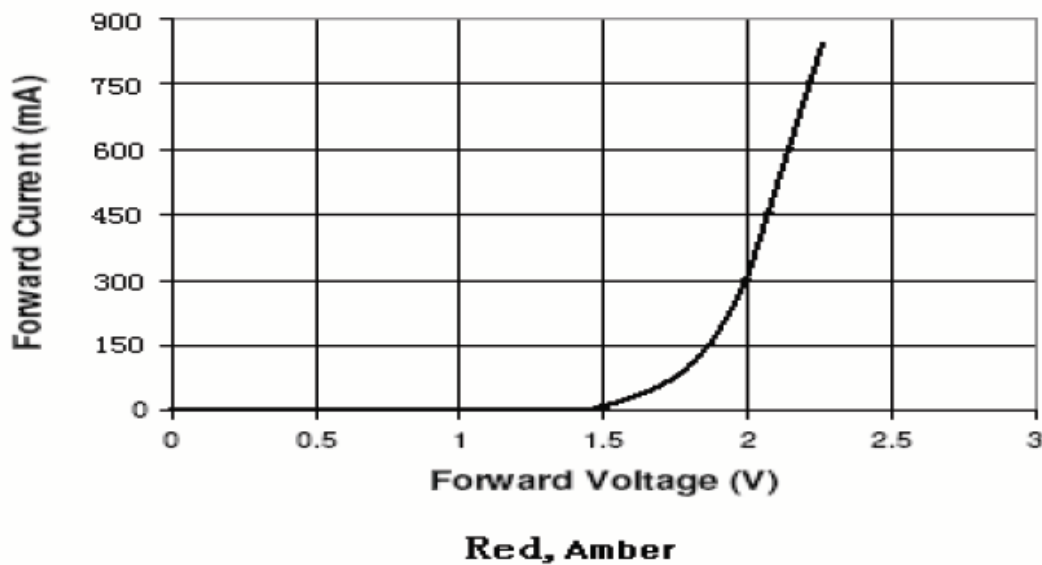
EDCON-COMPONENTS



The Power of LED Light



Characteristics



**3535 SMT Ceramic LED
1Watt**

Part No.: **M11B2001**

| | | | | | | | | | |
|-------|--------|------|--------|--------|--------|-----------|-----------|------------|------------|
| DRW: | Jason | CHKD | Wilson | MATL: | Wilson | TOLERANCE | Mason | DATE | 10.04.2009 |
| APPD: | Schumi | | | FINISH | Jamy | | Sheet No. | 16 from 21 | Customer: |

www.edcon-components.com

email: info@edcon-components.com

EDCON-COMPONENTS

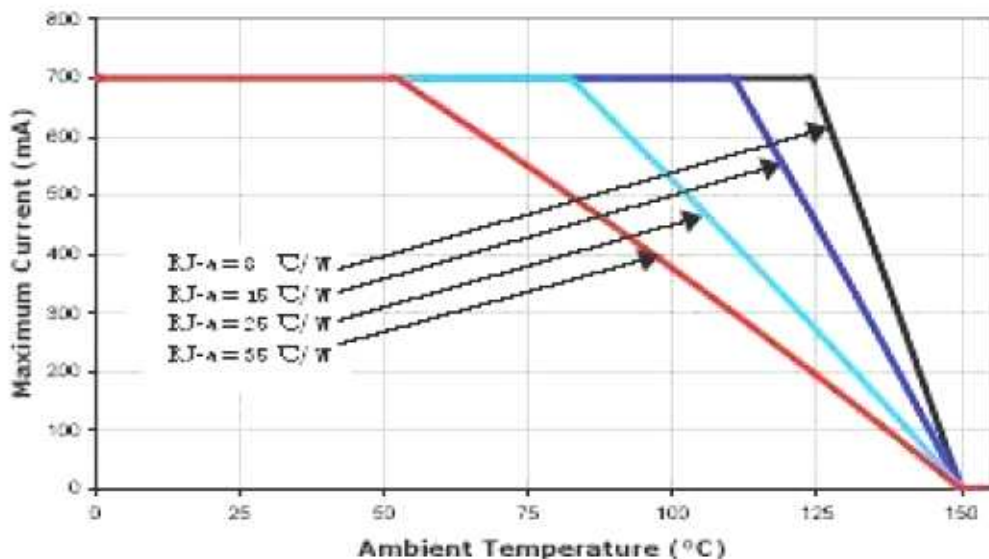


The Power of LED Light

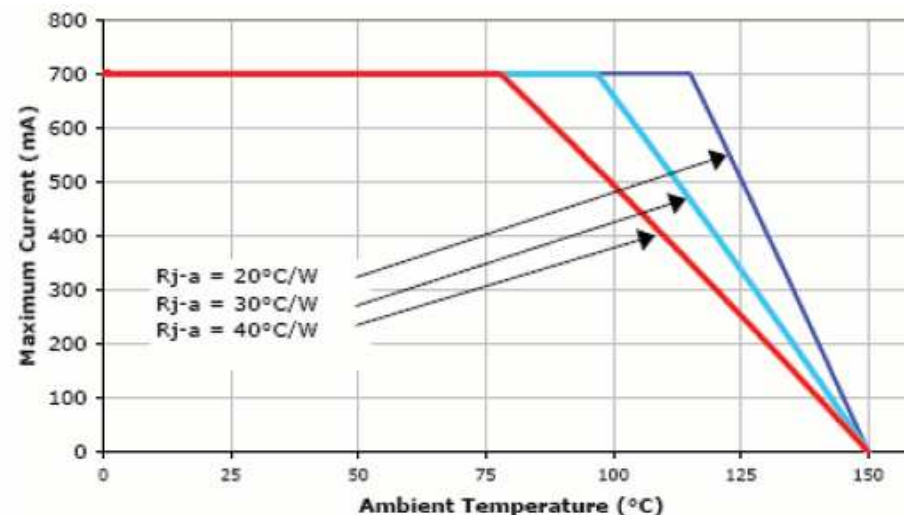


Characteristics

Thermal Design (IF=350mA) White, Royal Blue, Blue Green



Thermal Design (IF=350mA) Amber, Red



**3535 SMT Ceramic LED
1Watt**

Part No.: **M11B2001**

| | | | | | | | | | |
|-------|--------|------|--------|--------|--------|-----------|-----------|------------|------------|
| DRW: | Jason | CHKD | Wilson | MATL: | Wilson | TOLERANCE | Mason | DATE | 10.04.2009 |
| APPD: | Schumi | | | FINISH | Jamy | | Sheet No. | 17 from 21 | Customer: |

www.edcon-components.com

email: info@edcon-components.com

EDCON-COMPONENTS

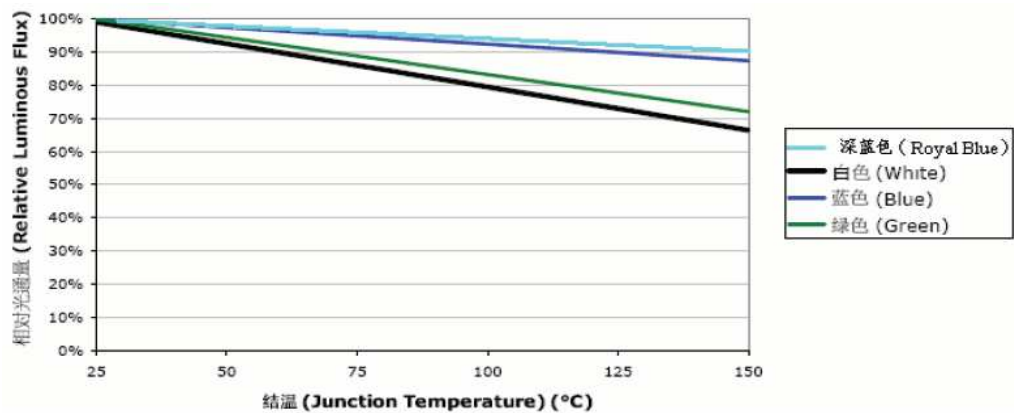


The Power of LED Light

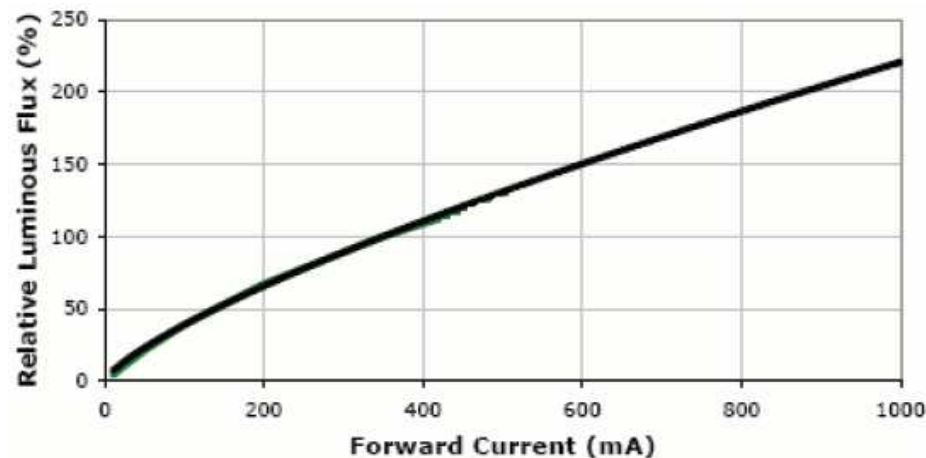


Characteristics

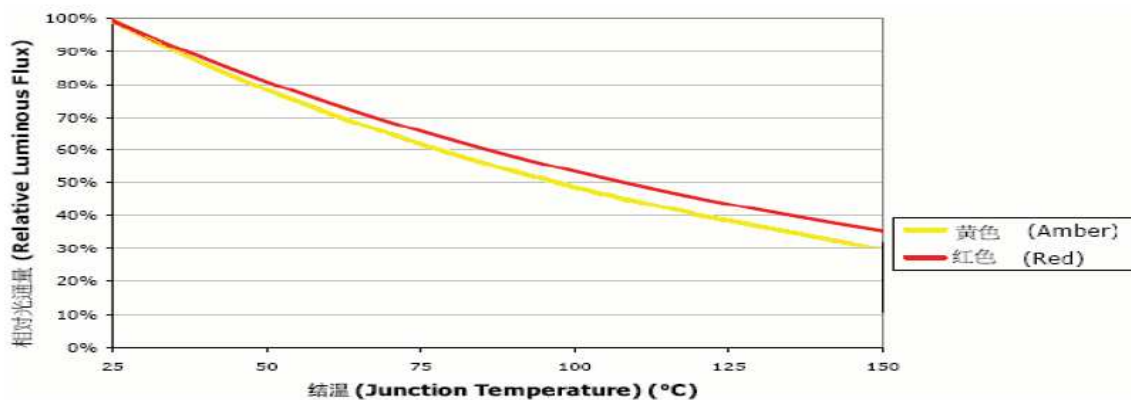
Relative Flux vs. Junction Temperature (IF=350mA) White, Royal blue, Blue Green



Relative Flux vs. Junction Temperature (IF=350mA) Amber Red



Relative Flux vs. Junction Temperature (IF=350mA) Amber, Red



**3535 SMT Ceramic LED
1Watt**

Part No.: **M11B2001**

| | | | | | | | | | |
|-------|--------|------|--------|--------|--------|-----------|-----------|------------|------------|
| DRW: | Jason | CHKD | Wilson | MATL: | Wilson | TOLERANCE | Mason | DATE | 10.04.2009 |
| APPD: | Schumi | | | FINISH | Jamy | | Sheet No. | 18 from 21 | Customer: |

www.edcon-components.com

email: info@edcon-components.com

EDCON-COMPONENTS



The Power of LED Light



Technical Informations

Test Circuit



Over Current proof

Customer must apply resistors for protection slight voltage shift will cause big current change (Burn out will happen)

Storage

It is recommended to store the products in the following conditions

Humidity: 60% R.H. max.

Temperature: 5°C~30°C (41°F ~ 86°F)

Shelf life in sealed bag: 12 months at <5°C~30°C and 30% R.H after the package is opening the products should be used within 24hrs. Or they should be kept stored at ≤20% R.H. with zip-lock sealed.

Baking

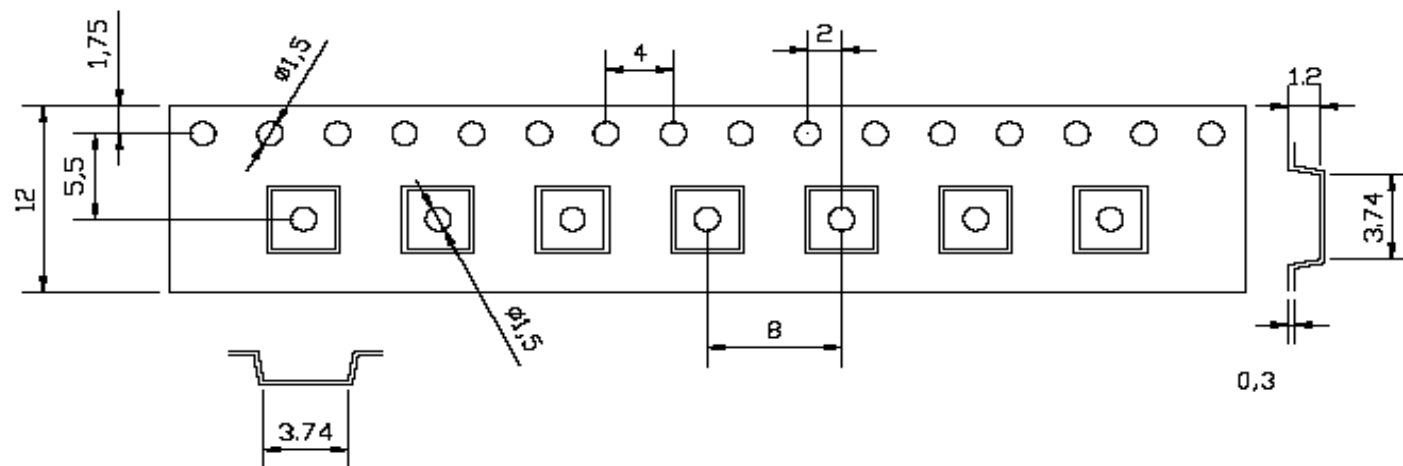
It is recommended to bake before soldering when the pack is unsealed after 24hrs. The conditions are as follows

80 +/-3°C x 10~12hrs and 5% RH taped reel type

100 +/-3°C + 1hr~2hr, bulk type

130 +/-3°C + 45min~1hr, bulk type

Tape / Reel Informations



**3535 SMT Ceramic LED
1Watt**

Part No.: **M11B2001**

Customer:

| | | | | | | | | | |
|-------|--------|------|--------|--------|--------|-----------|-----------|------------|------------|
| DRW: | Jason | CHKD | Wilson | MATL: | Wilson | TOLERANCE | Mason | DATE | 10.04.2009 |
| APPD: | Schumi | | | FINISH | Jamy | | Sheet No. | 19 from 21 | |

www.edcon-components.com

email: info@edcon-components.com

EDCON-COMPONENTS



The Power of LED Light



Ordering Informations

| Serie | Power of LED | Quantity of Dices | Frame Size | Color of LED | Viewing Angle | Brightness Code | Bin Code CIE | ROHS Compliant | Packing | |
|-----------------|--------------|-------------------|-------------|--------------|---------------|-----------------|--------------|----------------|-----------|--|
| M11B2001 | C | 1 | 3535 | RB | B | xx | xx | R | TR | |

| | | | | | | | | |
|--------------|-------------------|------------------------|-----------------------|-----------------------|-----------------------|-----------------------|------------------------|----------------------|
| C= 1W | 1= 1 Dices | 3535= 3,5x3,5mm | RB= Royal Blue | B= 120° degree | B= 120° degree | B= 120° degree | R= ROHS Conform | TR= Tape Reel |
|--------------|-------------------|------------------------|-----------------------|-----------------------|-----------------------|-----------------------|------------------------|----------------------|

| | |
|------------------------|-------------------------|
| RD= Red | |
| GN= Green | |
| AM= Amber | CW= Cool White |
| BL= Blue | DW= Day White |
| OR= Orange | NW= Nature White |
| FU= Three Color | WW= Warm White |

We cannot give you a garanty. For the same bin code order by order.

N= NON ROHS Conform

3535 SMT Ceramic LED 1Watt

Part No.: **M11B2001**

| | | | | | | | | | | |
|-------|--------|------|--------|--------|--------|-----------|-----------|------------|------------|-----------|
| DRW: | Jason | CHKD | Wilson | MATL: | Wilson | TOLERANCE | Mason | DATE | 10.04.2009 | Customer: |
| APPD: | Schumi | | | FINISH | Jamy | | Sheet No. | 20 from 21 | | |

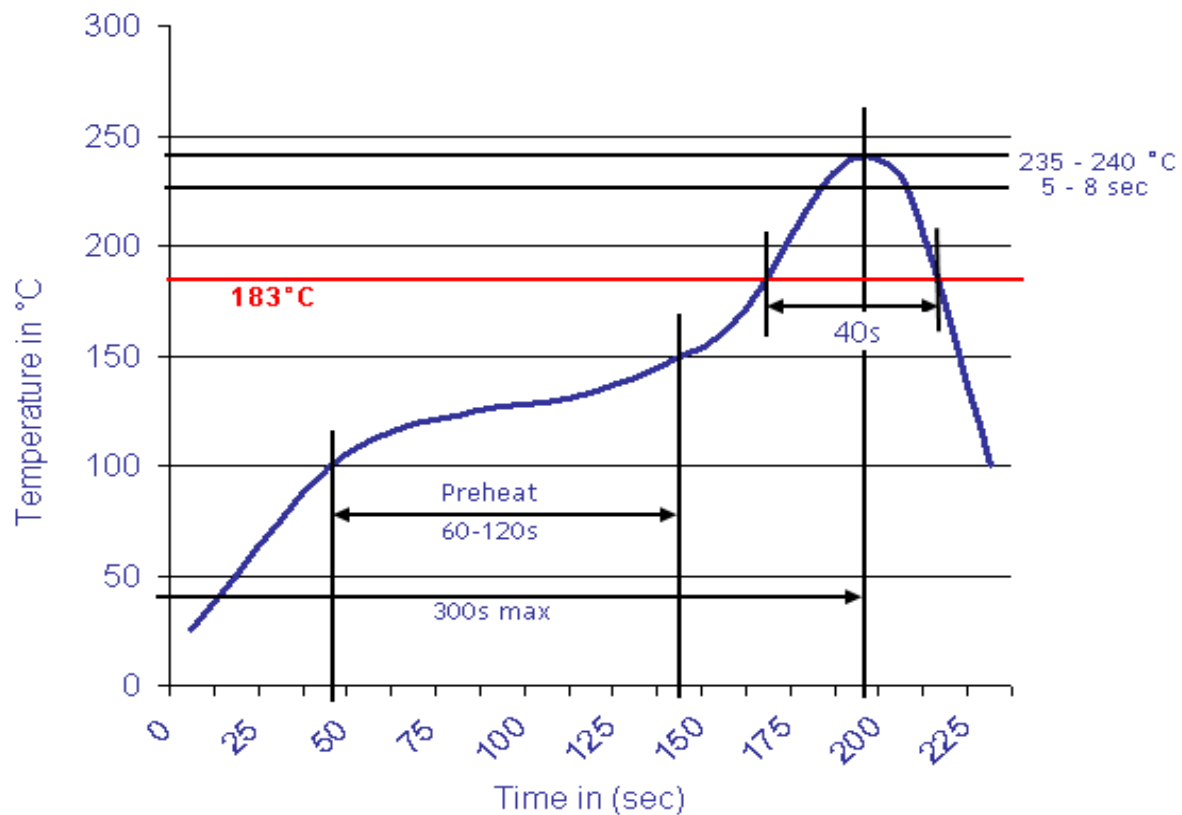


The Power of LED Light



Soldering Profile Curve

Classification Reflow Profile (JEDEC J-STD-020C)



| | |
|---------------------------------------|-----------------|
| 3535 SMT Ceramic LED 1Watt | |
| Part No.: | M11B2001 |
| Customer: | |

| | | | | | | | | | |
|-------|--------|------|--------|--------|--------|-----------|-----------|------------|------------|
| DRW: | Jason | CHKD | Wilson | MATL: | Wilson | TOLERANCE | Mason | DATE | 10.04.2009 |
| APPD: | Schumi | | | FINISH | Jamy | | Sheet No. | 21 from 21 | |