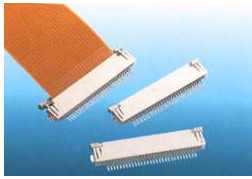
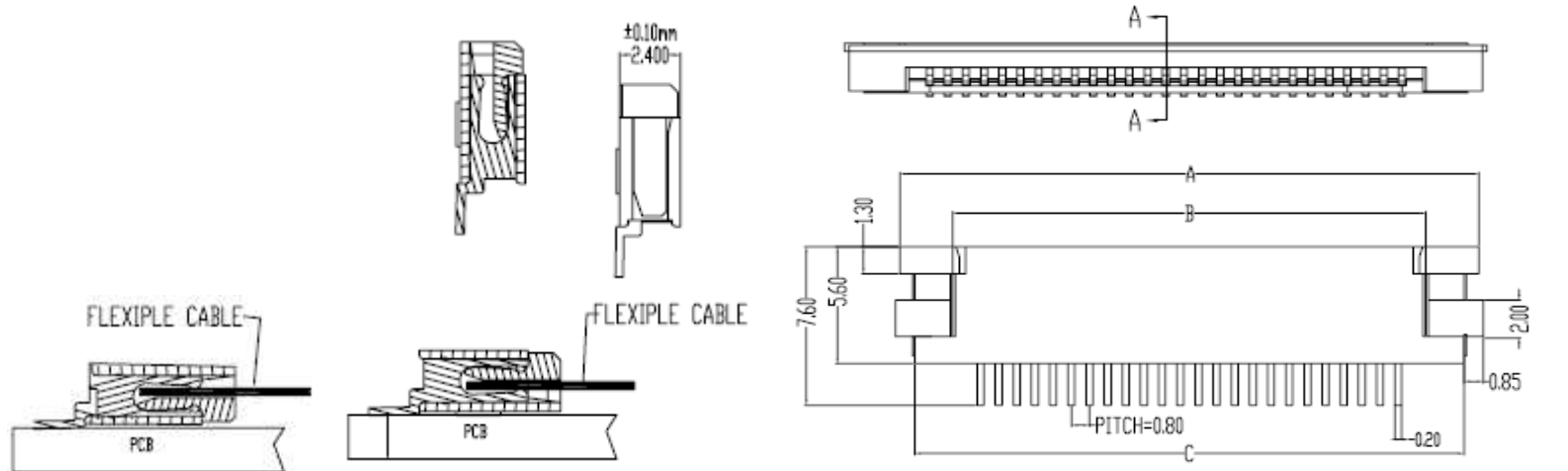


EDCON-COMPONENTS

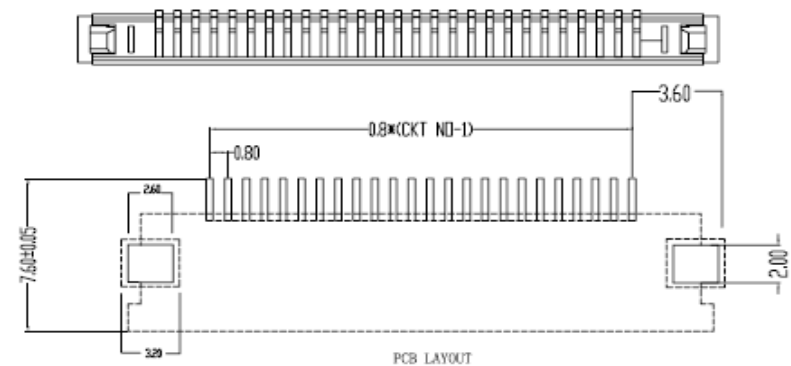


Material

Housing: LCP UL94V-0
 Latch: LCP
 Contact: Phosphor Bronze



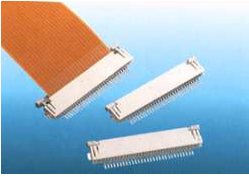
CKT	A	B	C	CKT	A	B	C
4	9.5	4.1		19	21.5	16.1	
5	10.3	4.9		20	22.3	16.9	
6	11.1	5.7		21	23.1	17.7	
7	11.9	6.5		22	23.9		
8	12.7	7.3		23	24.7		
9	13.5	8.1		24	25.5		
10	14.3	8.9		25	26.3		
11	15.1	9.7		26	27.1		
12	15.9	10.5		27	27.9		
13	16.7	11.3		28	28.7		
14	17.5	12.1		29	29.5		
15	18.3	12.9		30	30.3		
16	19.1	13.7		31	31.1		
17	19.9	14.5		32	31.9		
18	20.7	15.3		---	---	---	---



Non-Zif FPC / FFC Connector
Pitch: 0.80mm
 Part No.: **T28G001**

DRW:	Jason	CHKD	Wilson	MATL:	Wilson	TOLERANCE	Mason	DATE	12.07.2010	Customer:
APPD:	Schumi			FINISH	Jamy		Sheet No.	1 from 3		

EDCON-COMPONENTS

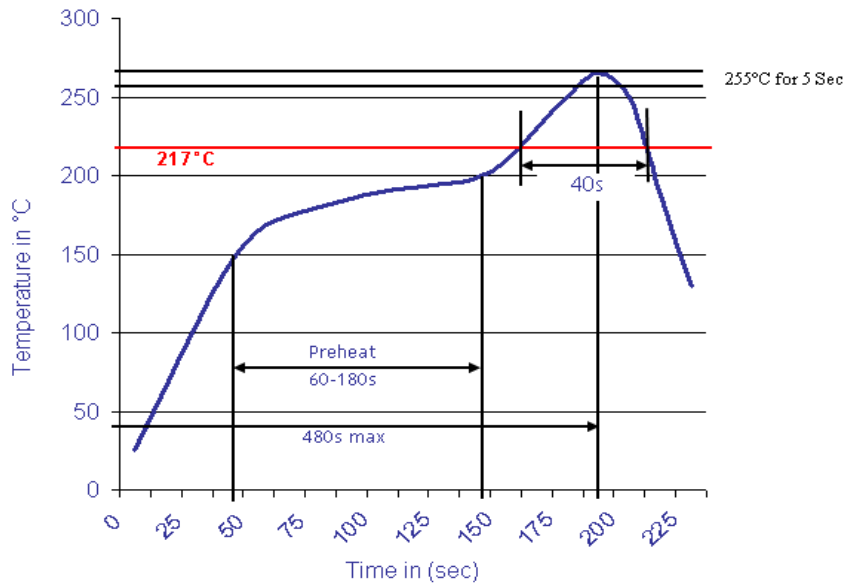


Ordering Information

Serie	-	Number of Contact	Contact Plating	Insulator Color	Packing Style					
T28G001	-	04	T	2	TU					
EDCON-Serie	-	04 = 4 Con. ... 32 = 32 Con.	T = Tin Plated G = Flash Gold	2 = Ivory (Standard) 1 = Black	TU = Tube (Standard) TR = Tape Reel (on Request)					

Soldering Profile Curve

Classification Reflow Profile (JEDEC J-STD-020C)



Non-Zif FPC / FFC Connector
Pitch: 0.80mm

Part No.: **T28G001**

DRW:	Jason	CHKD	Wilson	MATL:	Wilson	TOLERANCE	Mason	DATE	12.07.2010	Customer:
APPD:	Schumi			FINISH	Jamy		Sheet No.	2 from 3		