



### Technical Specification

Insulator Material:	
Contact Resistance:	30m Ohm max.
Insulator Resistance:	1000M Ohm max.
Temperature Rating:	-.55°C ~ 85°C
Contact Material:	Steel
Contact:	Tin Plated
Dielectric Voltage:	750VAC
Durability:	50 Cycles min.
Application for:	Coin Type
Battery Type:	1220, 1225, 1216



### Ordering Information

Serie	Contact Material	Contact Plating	ROHS	Packing		
-------	------------------	-----------------	------	---------	--	--

<b>B23071</b>	-	<b>ST</b>	<b>NI</b>	<b>R</b>	<b>BU</b>	
---------------	---	-----------	-----------	----------	-----------	--

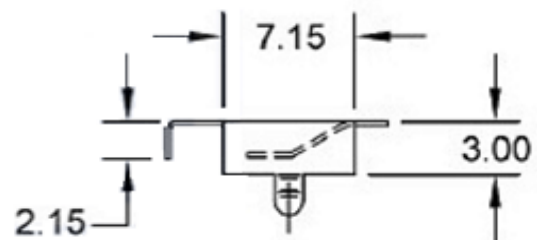
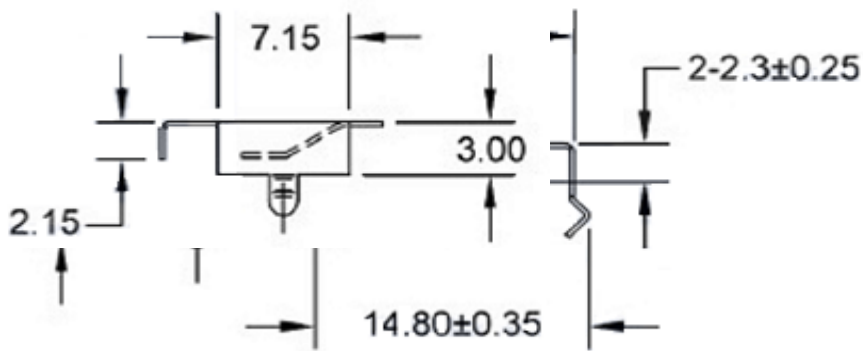
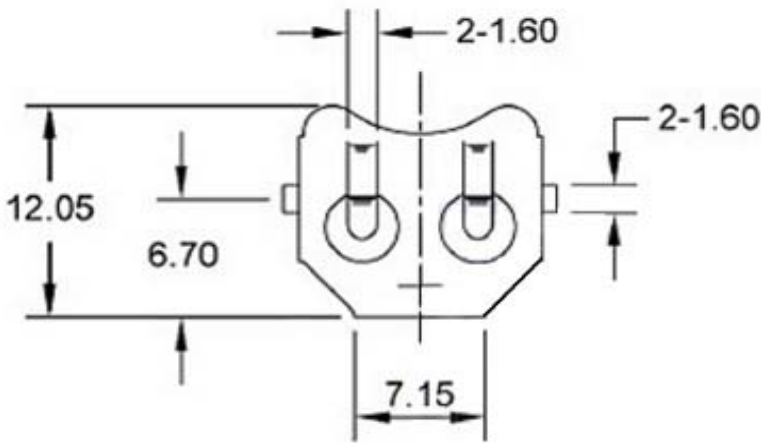
		<b>N=</b> Non ROHS	<b>BU=</b> Bulk-Ware
		<b>R=</b> ROHS Conform	<b>TY=</b> Tray
<b>ST=</b> Steel	<b>NI=</b> Nickel plated		

<b>Battery Coin Cell Holder</b>	
Part No.:	<b>B23071</b>
Customer:	
DRW:	Jason
APPD:	Join
CHKD:	CHKD
Jules	
MATL:	Wu
FINISH:	Shieh
DATE:	01.11.2018
Sheet:	1 from 3

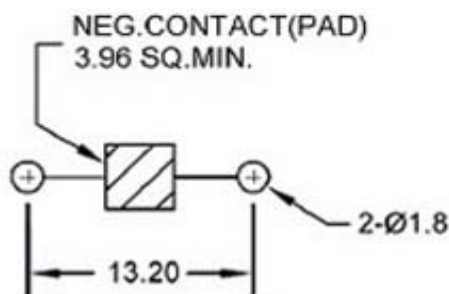
DRW:	Jason	CHKD:	CHKD	Jules	MATL:	Wu	DATE:	01.11.2018
APPD:	Join				FINISH:	Shieh	Sheet:	1 from 3



**Technical Dimensions**



**PCB Layout (mm)**



**Battery Coin Cell Holder**

Part No.: **B23071**

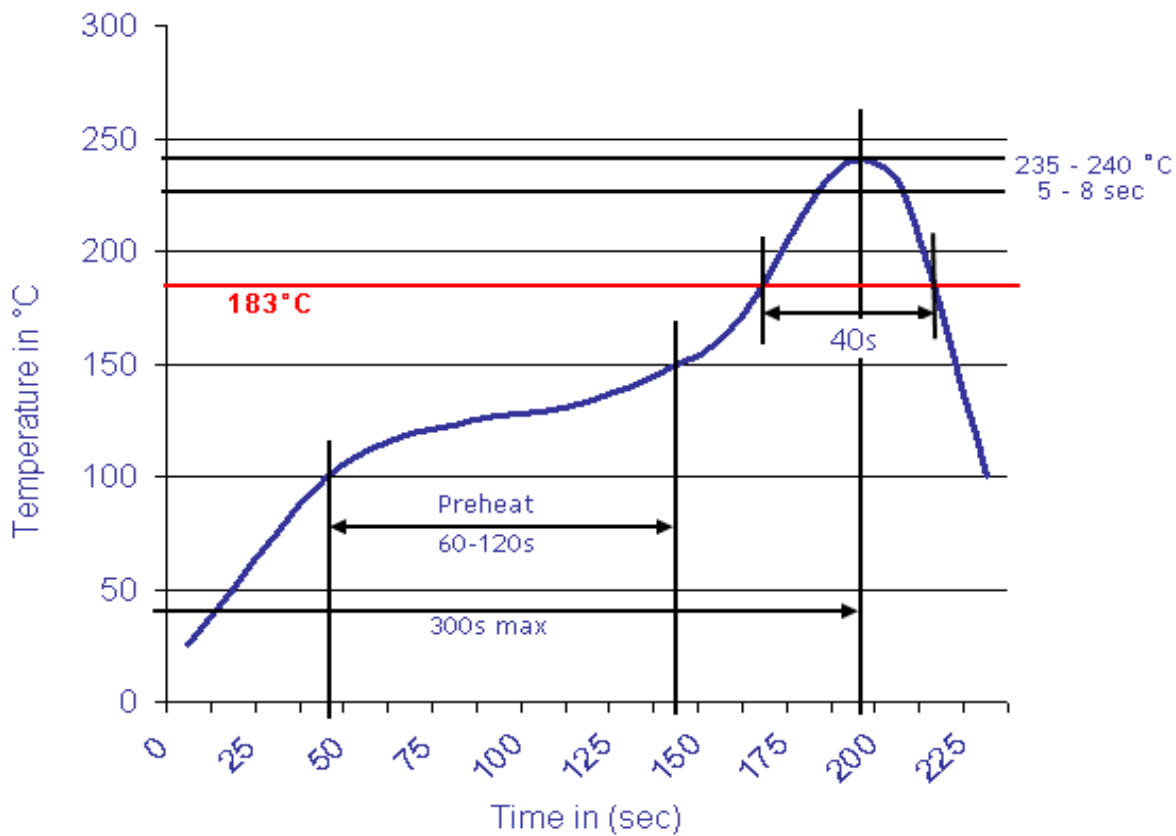
Customer:

DRW:	Jason	CHKD	Jules	MATL:	Wu	DATE	01.11.2018
APPD:	Join			FINISH	Shieh	Sheet	2 from 3



**Soldering Profile Curve**

**Classification Reflow Profile (JEDEC J-STD-020C)**



**Battery Coin Cell Holder**

Part No.: **B23071**

Customer:

DRW:	Jason	CHKD	Jules	MATL:	Wu	DATE	01.11.2018
APPD:	Join			FINISH	Shieh	Sheet	3 from 3