

### Technical Specification

#### Electrical Characteristics

Standard Resistance Range: 100Ω ~ 1,0MΩ  
 Resistance Tolerance: +/-30% Standard  
 Contact Resistance Variation : ≤3%  
 Effective Travel: 215° normal  
 Absolute Minimum Resistance: ≤ 1% max.  
 Resistance: Essentially infinite:

#### Environmental Characteristics

Power Rating: (50VDC max. ) 0,3W @ 70°C  
 Temperature Range: -30°C to +100°C  
 Temperature Coefficient: +/-250ppm/°C  
 Power Rating: 0,3W @ 70°C  
 Load Life: 1000hours, 0,3W @70°C

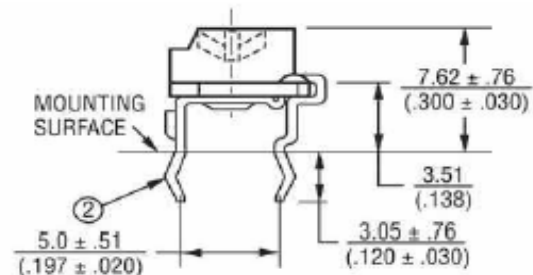
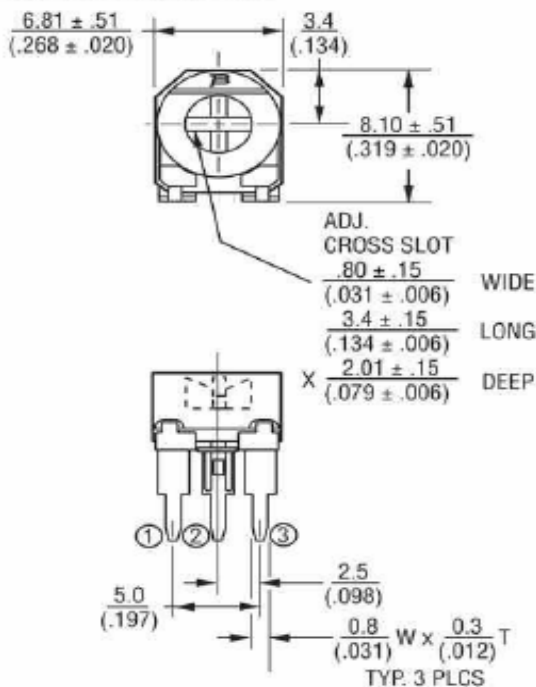
#### Features

THT/ Single-Turn/ Cermet / Industrial  
 4 Terminals Styles

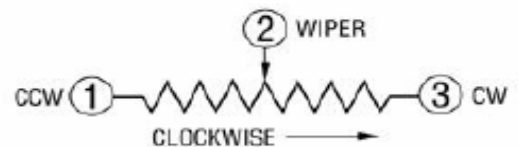
#### Physical Characteristics

Mechanical Angle: 240° +/- 10°  
 Operating Torque: ≤30mN-m  
 Marking: Resistance Resistance Code  
 Standard Packing: 200PCS per Bag

### Technical Dimensions Type 3306F



#### Physical Structure



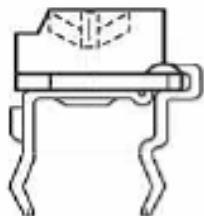
**8,1mm THT Single-Turn  
 Trimmer Type 3306F**

**X58006**

Customer:

DRW:	Jason	CHKD	Jules	MATL:	Wu	DATE	06.09.2009
APPD:	Join			FINISH	Shieh	Sheet	1 from 3

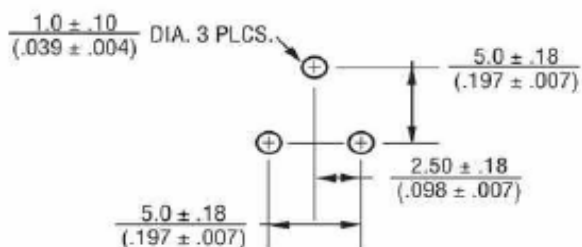
Copyright by EDCON-COMPONENTS H.Schmitt



**Range Code Table**

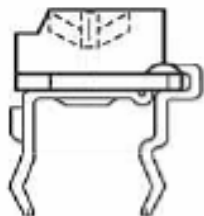
**PCB Layout**

Ordering Code	Range
101	100Ω
201	200Ω
501	500Ω
102	1,0KΩ
202	2,0KΩ
502	5,0KΩ
103	10KΩ
203	20KΩ
503	50KΩ
104	100KΩ
204	200KΩ
504	500KΩ
105	1,0MΩ



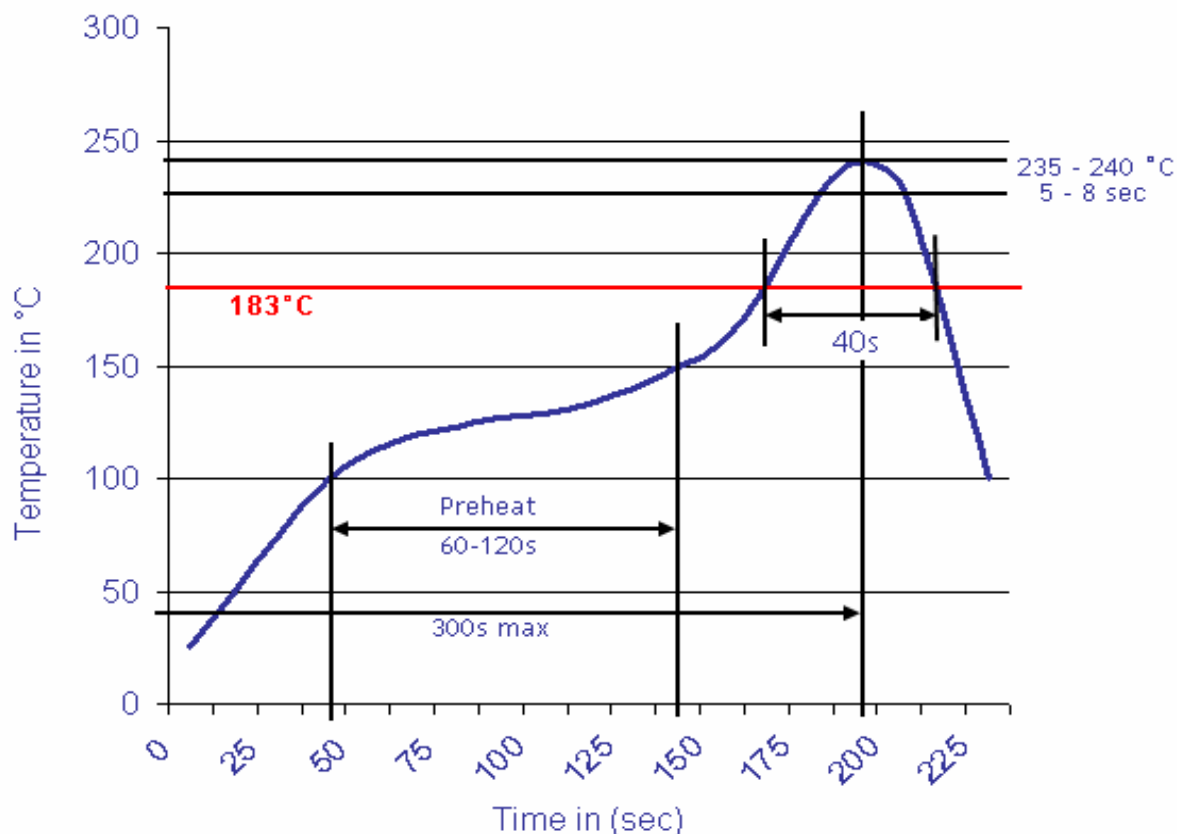
<b>8,1mm THT Single-Turn Trimmer Type 3306F</b>	
0	<b>X58006</b>
Customer:	

DRW:	Jason	CHKD	Jules	MATL:	Wu	DATE	06.09.2009
APPD:	Join			FINISH	Shieh	Sheet	2 from 3



**Soldering Profile**

**Classification Reflow Profile (JEDEC J-STD-020C)**



**Ordering Information**

Serie	Ordering Code	Tolerance	ROHS	Packing		
<b>X58006</b>	<b>101</b>	<b>M</b>	<b>R</b>	<b>BU201</b>		

<b>101</b> = 100Ω	<b>M</b> = Tol. 20%	<b>R</b> = ROHS conform	<b>BU201</b> = Bulk-Ware 200PCS
	<b>K</b> = Tol. 10%	<b>N</b> =NON ROHS conform	

<b>8,1mm THT Single-Turn Trimmer Type 3306F</b>	
0	<b>X58006</b>
Customer:	

DRW:	Jason	CHKD	Jules	MATL:	Wu	DATE	06.09.2009
APPD:	Join			FINISH	Shieh	Sheet	3 from 3