

### Technical Specification

#### Electrical Characteristics

Standard Resistance Range: 100Ω ~ 1,0MΩ  
 Resistance Tolerance: +/-30% Standard  
 Contact Resistance Variation : ≤10%  
 Effective Travel: 210° normal

#### Environmental Characteristics

Power Rating: (50VDC max. ) 100-500K  
 Temperature Range: -25°C to +105°C  
 Temperature Coefficient: +/-1000ppm/°C  
 Power Rating: 50°C - 0,1W  
 Load Life: 1000hours, 0,1W @70°C  
 Power Rating: ≥500K ohm, 25V

#### Features

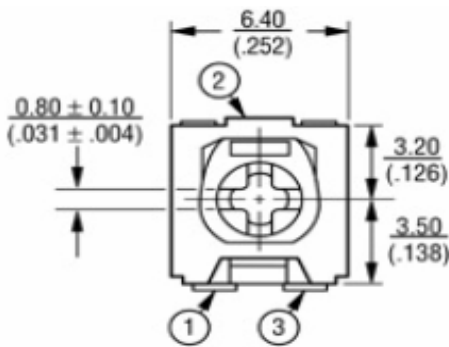
THT/ Single-Turn/ Phenolic / Industrial Sealed  
 2 Terminals Styles

#### Physical Characteristics

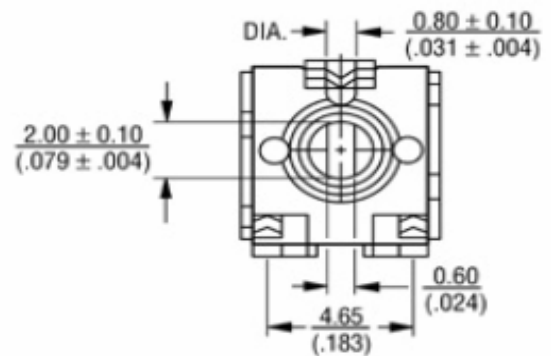
Strating Torque: 20-260g-cm  
 Knob-Size 750g-cm  
 Reverse Side: 350g-cm  
 Marking: Resistance Code, Model  
 Standard Packing: 200PCS per Bag

### Technical Dimensions Type 3318F

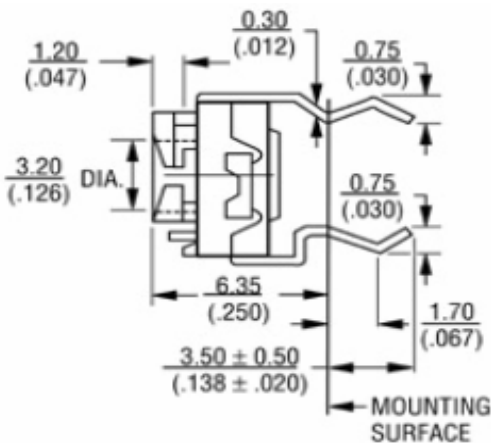
Front View



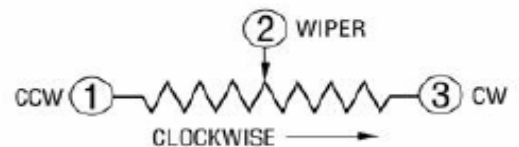
Rear View



Side View



#### Physical Structure

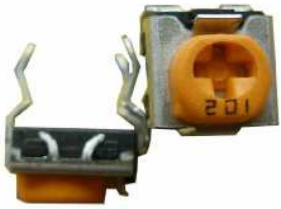


**6,4mm THT Single-Turn  
 Trimmer Type 3318F**

**X58002**

Customer:

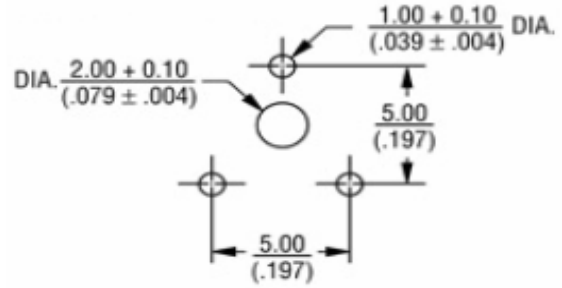
|       |       |      |       |        |       |       |            |
|-------|-------|------|-------|--------|-------|-------|------------|
| DRW:  | Jason | CHKD | Jules | MATL:  | Wu    | DATE  | 06.09.2009 |
| APPD: | Join  |      |       | FINISH | Shieh | Sheet | 1 from 3   |



**Range Code Table**

**PCB Layout**

| Ordering Code | Range |
|---------------|-------|
| 101           | 100Ω  |
| 201           | 200Ω  |
| 501           | 500Ω  |
| 102           | 1,0KΩ |
| 202           | 2,0KΩ |
| 502           | 5,0KΩ |
| 103           | 10KΩ  |
| 203           | 20KΩ  |
| 503           | 50KΩ  |
| 104           | 100KΩ |
| 204           | 200KΩ |
| 504           | 500KΩ |
| 105           | 1,0MΩ |

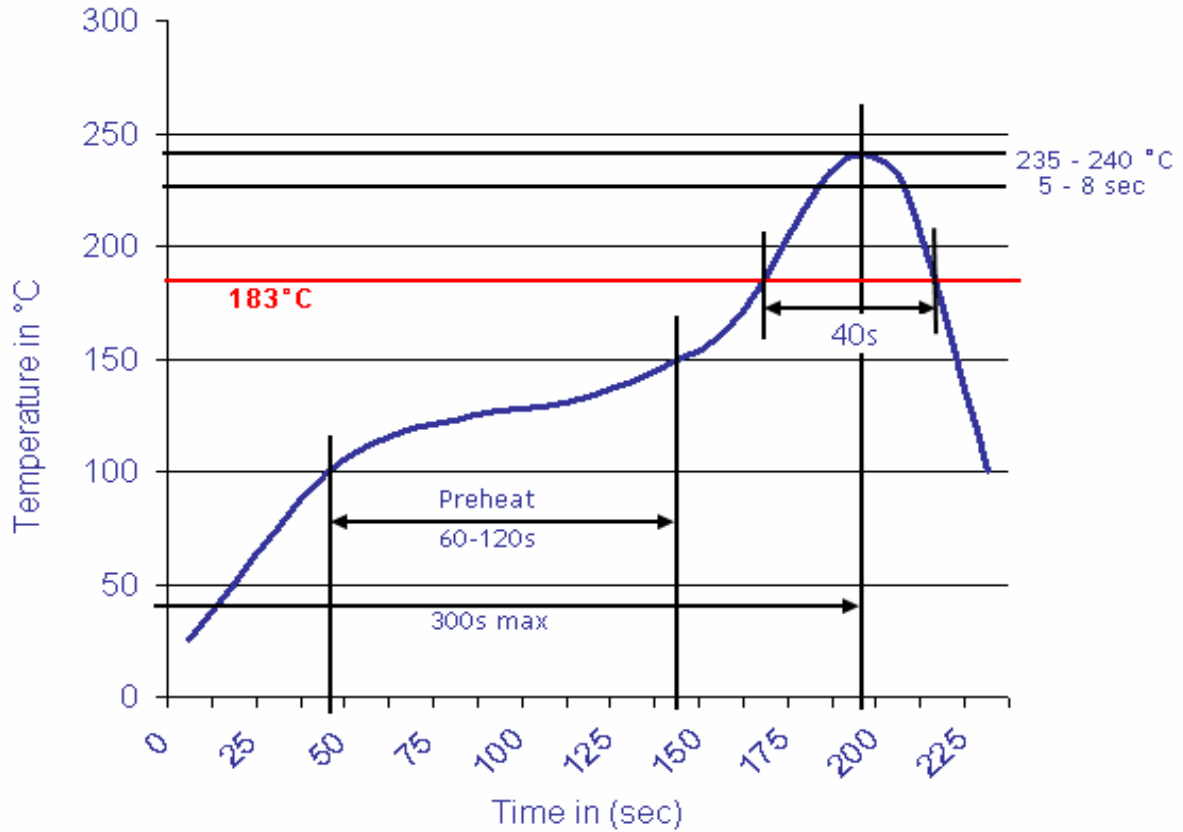


|   |               |
|---|---------------|
| <b>6,4mm THT Single-Turn Trimmer Type 3318F</b> |               |
| 0   | <b>X58002</b> |
| Customer:                                       |               |
| DRW:  | Jason         |
| APPD:   | Join          |
| CHKD:   | Jules         |
| MATL:   | Wu            |
| FINISH:   | Shieh         |
| DATE:   | 06.09.2009    |
| Sheet:  | 2 from 3      |



**Soldering Profile**

**Classification Reflow Profile (JEDEC J-STD-020C)**



**Ordering Information**

| Serie         | Ordering Code | Tolerance | ROHS     | Packing      |  |  |
|---------------|---------------|-----------|----------|--------------|--|--|
| <b>X58002</b> | <b>101</b>    | <b>M</b>  | <b>R</b> | <b>BU201</b> |  |  |

|                   |                     |                            |                                 |
|-------------------|---------------------|----------------------------|---------------------------------|
| <b>101</b> = 100Ω | <b>M</b> = Tol. 20% | <b>R</b> = ROHS conform    | <b>BU201</b> = Bulk-Ware 200PCS |
|                   | <b>K</b> = Tol. 10% | <b>N</b> =NON ROHS conform |                                 |

|   |               |
|---|---------------|
| <b>6,4mm THT Single-Turn Trimmer Type 3318F</b> |               |
| 0   | <b>X58002</b> |
| Customer:                                       |               |

|       |       |      |       |        |       |       |            |
|-------|-------|------|-------|--------|-------|-------|------------|
| DRW:  | Jason | CHKD | Jules | MATL:  | Wu    | DATE  | 06.09.2009 |
| APPD: | Join  |      |       | FINISH | Shieh | Sheet | 3 from 3   |