



Technical Specification

Electrical Characteristics

Standard Resistance Range: 10Ω to 2,0MΩ
 Look Standard resistance table
 Standard Resistance Tolerance: 10%
 Tighter Tolerance Available
 Absolute Minimum Resistance: 1% or 2 Ohms max. whichever is greater
 Contact Resistance Variation: 3% or 30hms max. whichever is greater
 Resolution: Essentially Infinite
 Insulation Resistance: 500VDC / 1000MΩ min.
 Dielectric Strength: 101,3KPa 600VAC 8,5KPa 250Vac
 Effective Travel: 11 turns nominal.
 TCR of shaded areas +/-250ppm/°C

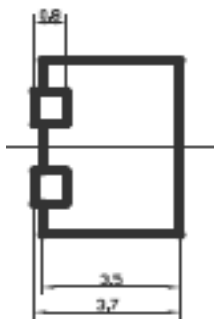
Environmental Characteristics

Power Rating: (200Volts max.)
 0,25Watt/ 70°C / 0Watt / 125°C
 Temperature Range: -55°C ~ +125°C
 Temperature Coefficient: +/-100ppm/°C
 Vibration: 98m/s² (1%Δ TR;1%Δ VR)
 Shock 490m/s² (1%Δ TR;1%Δ VR)
 Load Life: 1000hrs 0,25W @ 70°C (3% Δ TR; 3% or 3 Ohms).
 Rotational Life: 200cycles (3% Δ TR; 3% or 3 Ohms). whichever is greater, CRV
 Thermal Shock: 5cycles (2% Δ TR; 1% Δ VR).

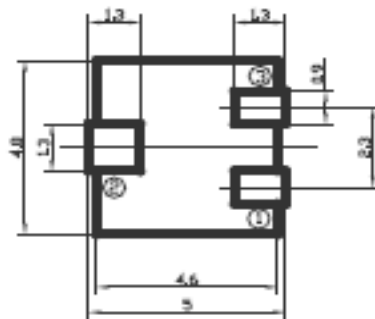
Physical Characteristics

Torque: 25nM * m. max.
 Mechanical Stops: Wiper idles
 Wiper: Set at 50% nominal

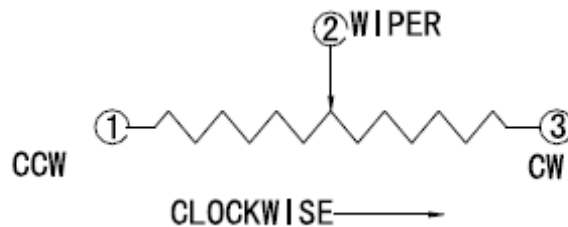
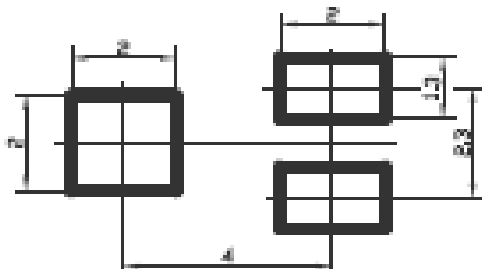
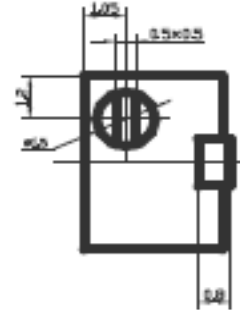
Technical Dimensions



PCB Layout



Physical Structure



SMT Multi-Turn Resistor

Serie No.: X21002

Customer:

DRW:	Jason	CHKD	Jules	MATL:	Wu	DATE	12.07.2014
APPD:	Join			FINISH	Shieh	Sheet	1 from 3



Range Table

Ordering Code	Range
100	10Ω
200	20Ω
500	50Ω
101	100Ω
201	200Ω
501	500Ω
102	1,0KΩ
202	2,0KΩ
502	5,0KΩ
103	10KΩ
203	20KΩ
503	50KΩ
104	100KΩ
224	200KΩ
504	500KΩ
105	1,0MΩ
205	2,0MΩ

SMT Multi-Turn Resistor

Serie No.: **X21002**

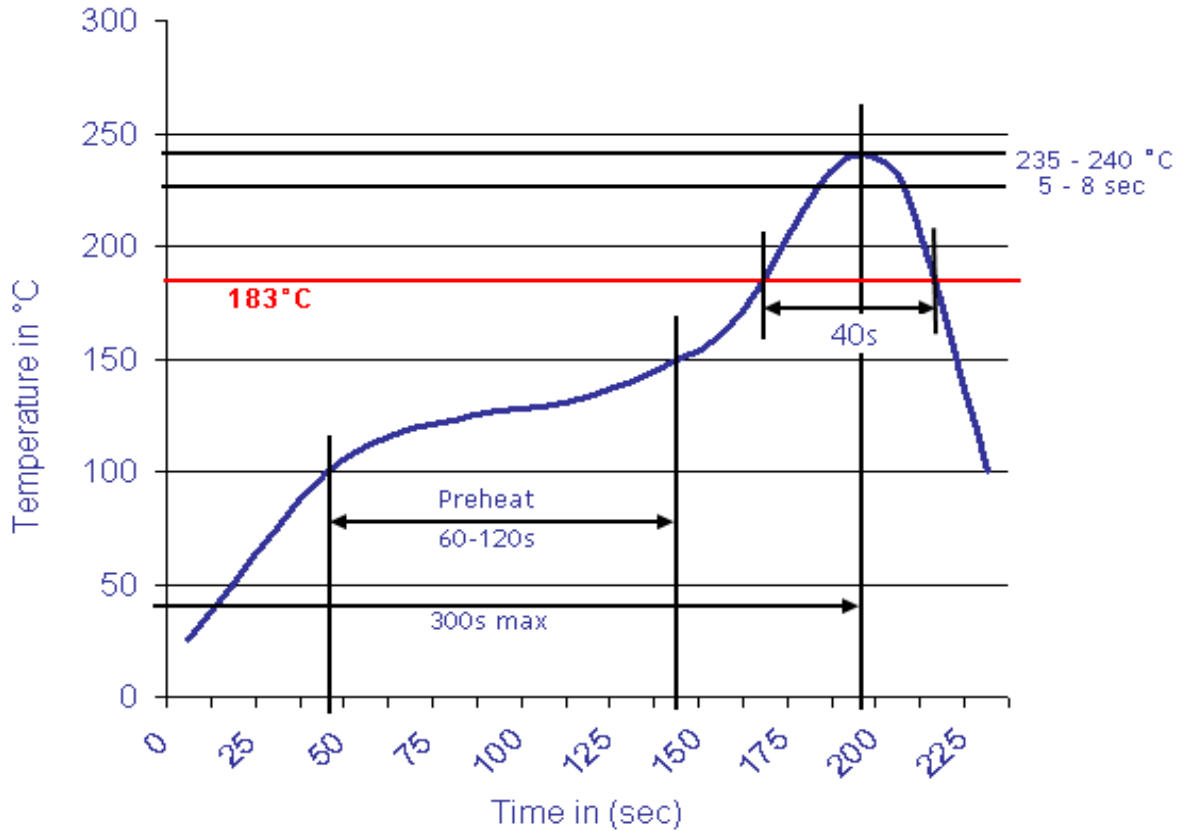
Customer:

DRW:	Jason	CHKD	Jules	MATL:	Wu	DATE	12.07.2014
APPD:	Join			FINISH	Shieh	Sheet	2 from 3



Soldering Profile

Classification Reflow Profile (JEDEC J-STD-020C)



Ordering Information

Serie	Ordering Code Range	Tolerance	ROHS	Packing		
X21002	100	K	R	TR102		
	100= 10Ω	K= Tol. 10%	R= ROHS conform	TR102= Tape Reel 1000PCS		
		J= Tol. 5%	N=NON ROHS conform			

SMT Multi-Turn Resistor	
Serie No.:	X21002
Customer:	

DRW:	Jason	CHKD	Jules	MATL:	Wu	DATE	12.07.2014
APPD:	Join			FINISH	Shieh	Sheet	3 from 3