



### Technical Specification

#### Electrical Characteristics

Standard Resistance Range: 10Ω to 2,0MΩ  
 Look Standard resistance table  
 Standard Resistance Tolerance: 10%  
 Tighter Tolerance Available  
 Absolute Minimum Resistance: 1% or 2 Ohms max. whichever is greater  
 Contact Resistance Variation: 3% or 30 Ohms max. whichever is greater  
 Resolution: Essentially Infinite  
 Insulation Resistance: 500VDC / 1000MΩ min.  
 Dielectric Strength: 101,3KPa 600VAC 8,5KPa 250Vac  
 Effective Travel: 11 turns nominal.  
 TCR of shaded areas +/-250ppm/°C

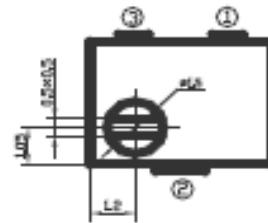
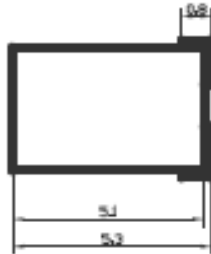
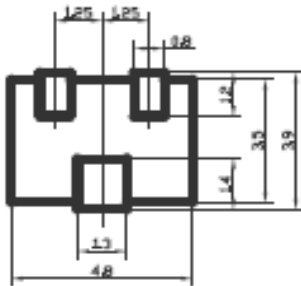
#### Environmental Characteristics

Power Rating: ( 200Volts max.)  
 0,25Watt/ 70°C / 0Watt / 125°C  
 Temperature Range: -55°C ~ +125°C  
 Temperature Coefficient: +/-100ppm/°C  
 Vibration: 98m/s<sup>2</sup> (1%Δ TR;1%Δ VR)  
 Shock 490m/s<sup>2</sup> (1%Δ TR;1%Δ VR)  
 Load Life: 1000hrs 0,25W @ 70°C (3% Δ TR; 3% or 3 Ohms).  
 Rotational Life: 200cycles (3% Δ TR; 3% or 3 Ohms). whichever is greater, CRV  
 Thermal Shock: 5cycles (2% Δ TR; 1% Δ VR).

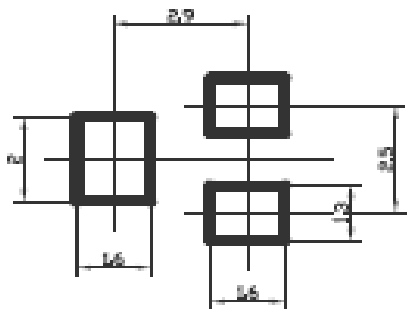
#### Physical Characteristics

Torque: 25nM \* m. max.  
 Mechanical Stops: Wiper idles  
 Wiper: Set at 50% nominal

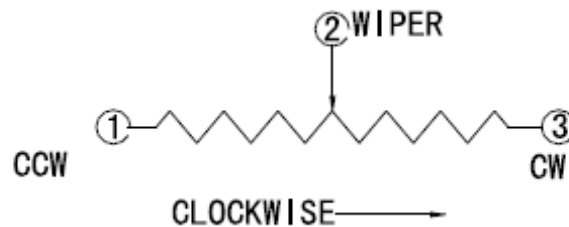
### Technical Dimensions



#### PCB Layout



#### Physical Structure



#### SMT Multi-Turn Resistor

Serie No.: X21001

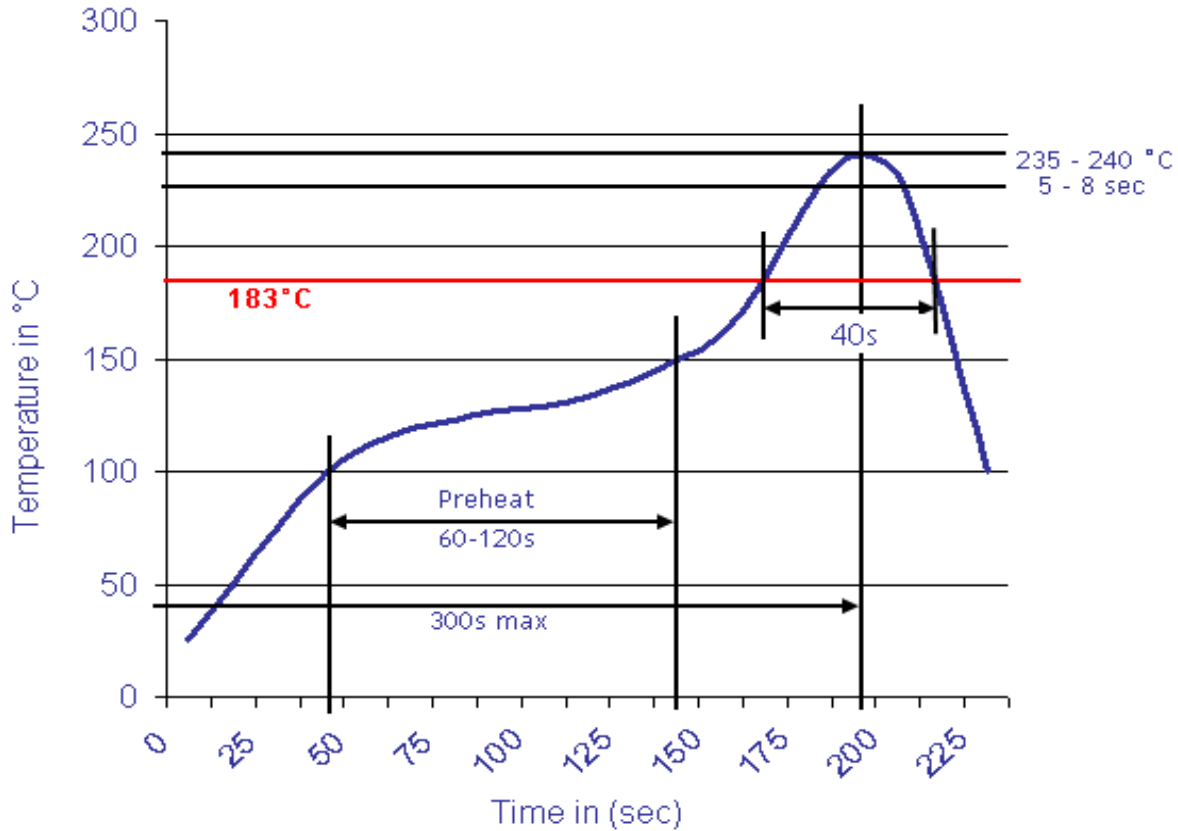
Customer:

DRW:	Jason	CHKD	Jules	MATL:	Wu	DATE	12.07.2014
APPD:	Join			FINISH	Shieh	Sheet	1 from 2



**Soldering Profile**

**Classification Reflow Profile (JEDEC J-STD-020C)**



**Ordering Information**

Serie	Range	Tolerance	ROHS	Packing		
X21001	100	K	R	TR102		

100= 10Ω	K= Tol. 10%	R= ROHS conform	TR102= Tape Reel 1000PCS
205= 2,0MΩ	J= Tol. 5%	N=NON ROHS conform	

Range from 10R to 2,0M Ohm

<b>SMT Multi-Turn Resistor</b>	
Serie No.:	<b>X21001</b>
Customer:	

DRW:	Jason	CHKD	Jules	MATL:	Wu	DATE	12.07.2014
APPD:	Join			FINISH	Shieh	Sheet	2 from 2