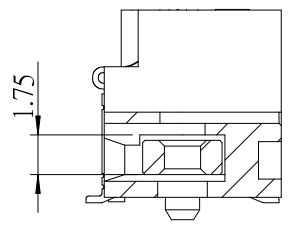



NOTE:

1. SOLDER TAIL TO BE WITHIN 0.05 UPWARD AND 0.2 DOWNWARD FROM Z-DATUM PLACE, AND COPLANALITY OF SOLDER TAILS TO BE WITHIN 0.10 MEASUREMENT POINT IS SOLDER TAILS TIP.
2. INSPECTION SYMBOL:  
 ● : MANUFACTURER INSPECTION  
 ◆ : Q.C INSPECTION
3. ACCORDING HSF CONCRAFT LEVEL 1

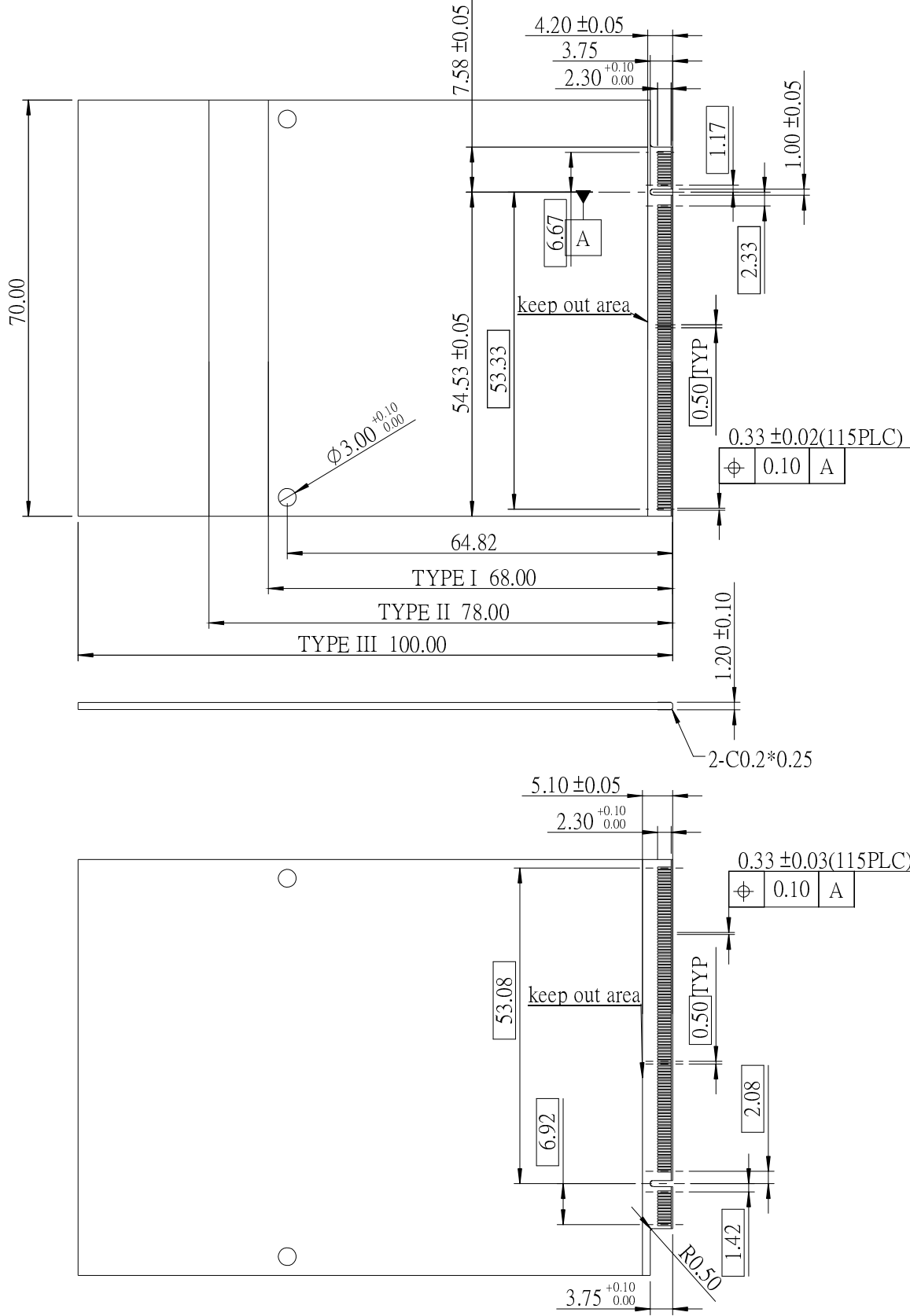



B-B (3 : 1)

				GENERAL TOLERANCE		DRAW:	PART NO:
				X. ±0.30	X' ± 2.00'	Andrew	106023BE85C
				.X ±0.20	.X' ± 1.00'	CHECKED:	TITLE:
				.XX ±0.10	.XX' ± 0.50'		MXM 230P 0.5 PITCH RIGHT KEY
				.XXX ±0.05		APPROVE:	DRAWING NO:
8	A	E080349A	Roy	11/11/2008	UNITS: mm	David	106023BE85C
	REV.	ECO NO.	DRAW	DATE	⊕	 <b>CONCRAFT</b> DRAGONSTATE TECHNOLOGY CO., LTD	
	MATERIAL:	FINISH:	DATE:	REV.	A		
			11 / 11 / 2008				

A B C D E F

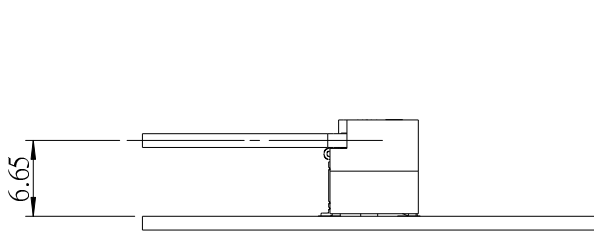
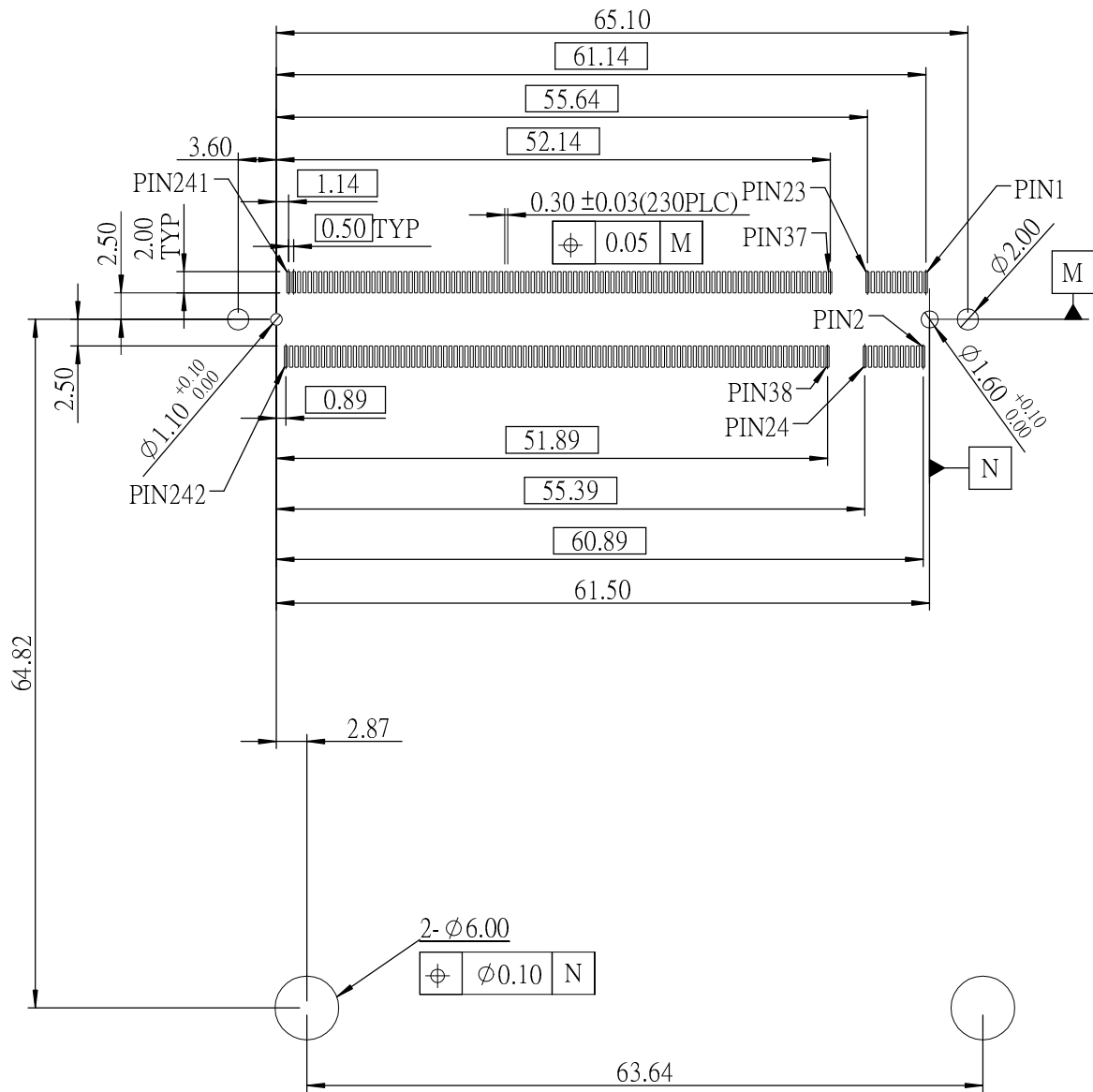
1  
2  
3  
4  
5  
6  
7  
8



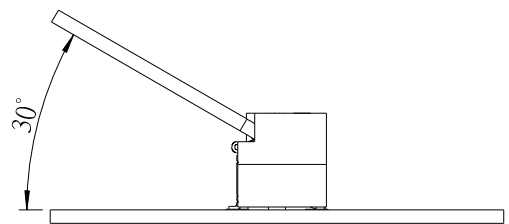
				GENERAL TOLERANCE		DRAW:	PART NO:
				X. ±0.30	X.' ± 2.00'	Andrew	106023BE85C
				X ±0.20	.X' ± 1.00'	CHECKED:	TITLE:
				.XX ±0.10	.XX' ± 0.50'		MXM 230P 0.5 PITCH LEFT KEY
				.XXX ±0.05		APPROVE:	DRAWING NO:
8	A	E080349A	Roy	11/11/2008	UNITS: mm	DAVID	106023BE85C
					SHEET: 2 / 3		
	REV.	ECO NO.	DRAW	DATE	⊕	 <b>CONCRAFT</b> <i>DRAGONSTATE TECHNOLOGY CO., LTD</i>	
	MATERIAL:	FINISH:	DATE:	REV.	A		
				11 / 11 / 2008			

A B C D E F


# RECOMMEND MXM 230P PCB LAYOUT



PCB 180 Degree Condition



PCB 30 Degree Condition

				GENERAL TOLERANCE		DRAW:	PART NO:
				X. ±0.30	X.' ± 2.00'	Andrew	106023BE85C
				.X ±0.20	.X' ± 1.00'	CHECKED:	TITLE:
				.XX ±0.10	.XX' ± 0.50'		MXM 230P 0.5 PITCH LEFT KEY
				.XXX ±0.05		APPROVE:	DRAWING NO:
A	E080349A	Roy	11/11/2008	UNITS: mm	SHEET: 3 / 3	David	106023BE85C
REV.	ECO NO.	DRAW	DATE	 <b>CONCRAFT</b> DRAGONSTATE TECHNOLOGY CO., LTD			
MATERIAL:	FINISH:	DATE:	11 / 11 / 2008				