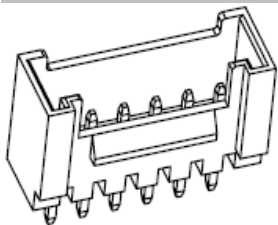


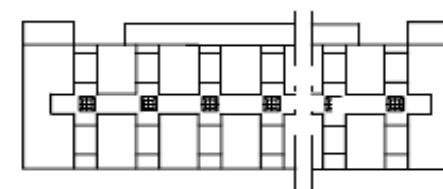
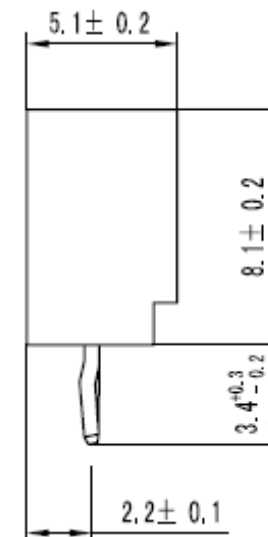
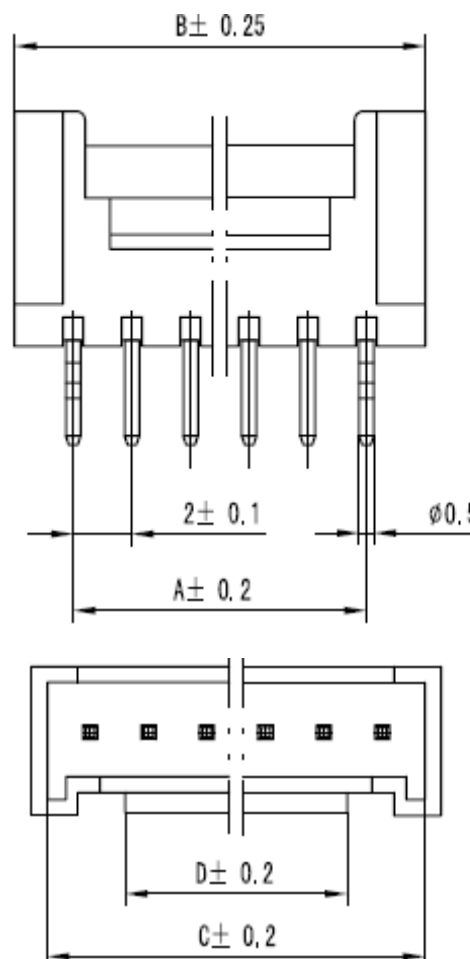
EDCON-COMPONENTS



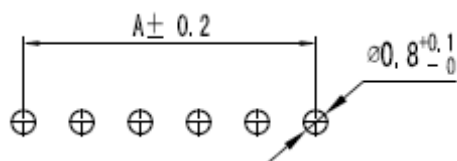
Specifications

Voltage Rating:	250V AC,DC
Current Rating	3A AC/DC
Operating Temperature	. -25°C ~ + 85°C
Contact Resistance	20 milli Ohm max.
Withstanding Voltage	1000V AC/minute
Insulation Resistance	1000 M Ohm min.
Material Pin:	Phosphor Bronze / Tin plated
Wafer	Nylon UL94V-0 (2)

Drawing (dimensions all into mm)



PCB Layout



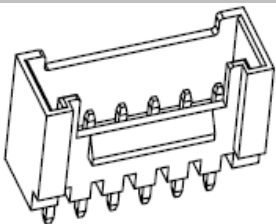
Wafer Serie Pitch 2,00mm

Part No.: **T68T1082-**

Customer:

DRW:	Jason	CHKD	Wilson	MATL:	Wilson	TOLERANCE	Mason	DATE	10.10.2015
APPD:	Schumi			FINISH	Jamy		Sheet No.		1 from 4

EDCON-COMPONENTS



Ordering Informations

Serie	Number of Pos.	Contact plating	Body Colour	Body Material	Special function	ROHS	Packing			
-------	----------------	-----------------	-------------	---------------	------------------	------	---------	--	--	--

T68T1082-	02	T	NA	A	0	R	BU			
------------------	-----------	----------	-----------	----------	----------	----------	-----------	--	--	--

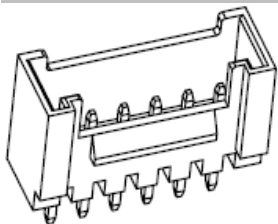
xx = Pos.	T= Tin	NA= Nature	A= Nylon V0	0= No Special	R= ROHS Conform	BU= Bulk			
	G= Flash Gold		B= Nylon V2		N= ROHS Conform	IV= Individual Package			

Wafer Serie Pitch 2,00mm

Part No.: **T68T1082-**

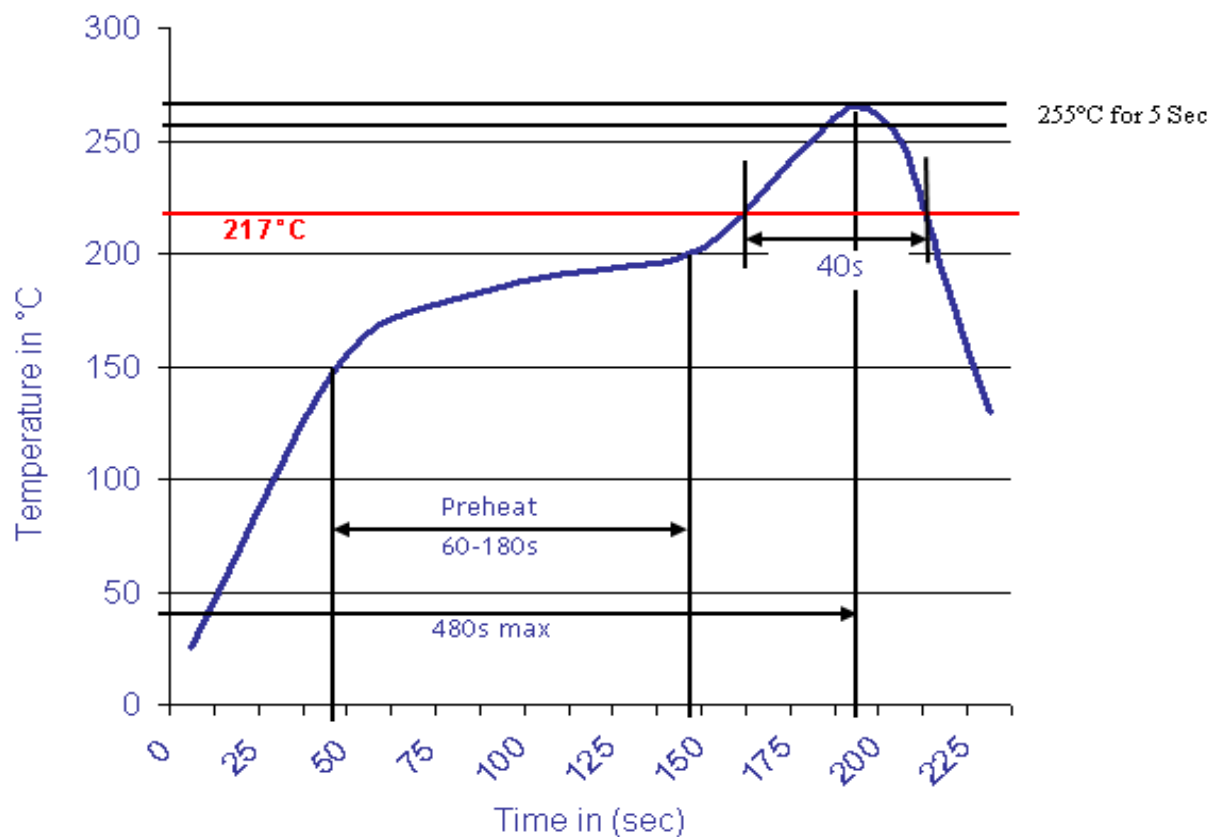
DRW:	Jason	CHKD	Wilson	MATL:	Wilson	TOLERANCE	Mason	DATE	10.10.2015
APPD:	Schumi			FINISH	Jamy		Sheet No.		3 from 4

Customer:



Soldering Profile

Classification Reflow Profile (JEDEC J-STD-020C)



Wafer Serie Pitch 2,00mm

Part No.: **T68T1082-**

DRW:	Jason	CHKD	Wilson	MATL:	Wilson	TOLERANCE	Mason	DATE	10.10.2015
APPD:	Schumi			FINISH	Jamy		Sheet No.	4 from 4	

Customer: