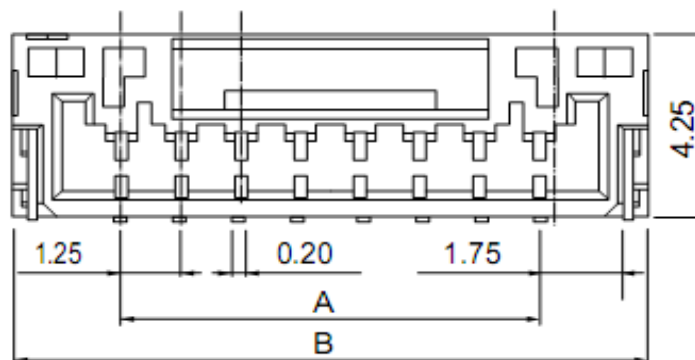


Specifications

Voltage Rating:	50V AC/DC
Current Rating	1A AC/DC
Operating Temperature	. - 25°C ~ + 85°C
Contact Resistance	30m Ohm max.
Withstanding Voltage	500V AC/minute
Insulation Resistance	100 M Ohm min.
Material:	Nylon 6T, UL94V-0
Applicable P.C.B	
Applicable FPC/FFC	
Solder Height	
Crimp Tensile Strength	
Pin Material:	Brass / Tin Plated
Solder Tabs:	Brass / Tin Plated

Drawing (dimensions all into mm)



Terminal Assembly Drawing

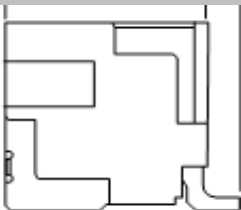


Wafer Serie T68S1009 Pitch
1,25mm

Part No.: **T68S1009**

Customer:

DRW:	Jason	CHKD	Wilson	MATL:	Wilson	TOLERANCE	Mason	DATE	02.04.2009
APPD:	Schumi			FINISH	Jamy		Sheet No.	1 from 3	



Dimension Informations about Wafer

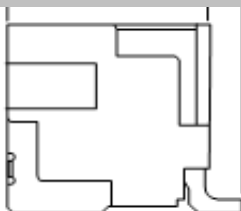
Pos.	Dimension (mm)					
	A	B	C	D	E	F
2	1,25	5,57				
3	2,50	7,00				
4	3,75	8,25				
5	5,00	9,50				
6	6,25	10,75				
7	7,50	12,00				
8	8,75	13,25				
9	10,00	14,50				
10	11,25	15,75				
11	12,50	17,00				
12	13,75	18,25				
13	15,00	19,50				
14	16,25	20,75				
15	17,50	22,00				

Pos.	Dimension (mm)					
	A	B	C	D	E	F



Wafer Serie T68S1009 Pitch 1,25mm
Part No.: T68S1009
Customer:

DRW:	Jason	CHKD	Wilson	MATL:	Wilson	TOLERANCE	Mason	DATE	02.04.2009
APPD:	Schumi			FINISH	Jamy			Sheet No.	2 from 3



Ordering Informations

Serie	Number of Pos.	Contact Plating	Packing							
-------	----------------	-----------------	---------	--	--	--	--	--	--	--

T68S1009	02	T	TR							
-----------------	-----------	----------	-----------	--	--	--	--	--	--	--

xx = Pos.	T= Tin Plated (Standard)	BU= Bulk (Standard)								
		TY= Tray Packing								
	G= Gold Flash Plated	TR= Tape / Reel Packing								



Wafer Serie T68S1009 Pitch 1,25mm	
Part No.:	T68S1009
Customer:	

DRW:	Jason	CHKD	Wilson	MATL:	Wilson	TOLERANCE	Mason	DATE	02.04.2009
APPD:	Schumi			FINISH	Jamy		Sheet No.		3 from 3