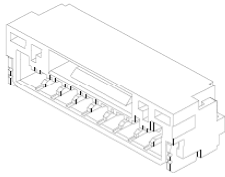


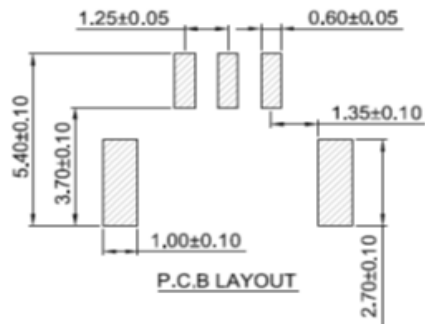
EDCON-COMPONENTS



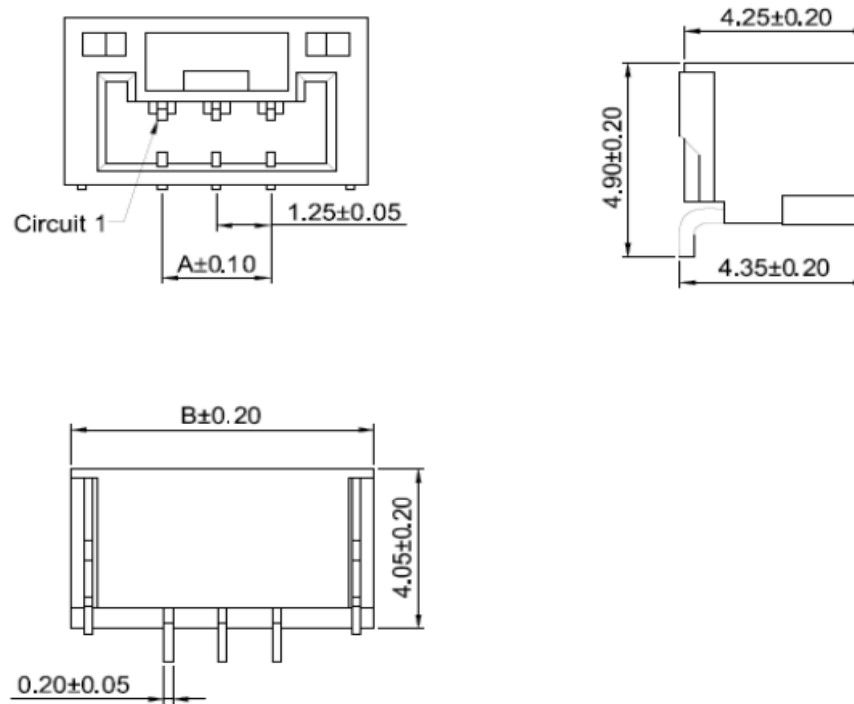
Specifications

Voltage Rating:	50V AC/DC
Current Rating	1A AC/DC
Operating Temperature	. - 25°C ~ + 85°C
Contact Resistance	30m Ohm max.
Withstanding Voltage	500V AC/minute
Insulation Resistance	100 M Ohm min.
Material:	Nylon 6T, UL94V-0
Applicable P.C.B	
Applicable FPC/FFC	
Solder Height	
Crimp Tensile Strength	
Pin Material:	Brass / Tin Plated
Solder Tabs:	Brass / Tin Plated

Terminal Assembly Drawing



Drawing (dimensions all into mm)

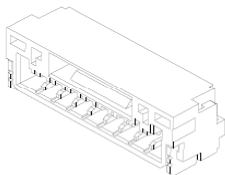


Wafer Serie T68S1007 Pitch
1,25mm

Part No.: **T68S1007-**

Customer:

DRW:	Jason	CHKD	Wilson	MATL:	Wilson	TOLERANCE	Mason	DATE	14.01.2021
APPD:	Schumi			FINISH	Jamy		Sheet No.		1 from 4



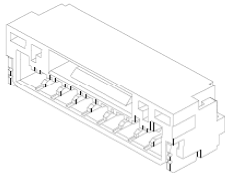
Dimension Informations about Wafer

Pos.	Dimension (mm)					
	A	B	C	D	E	F
2	1,25	5,75				
3	2,50	7,00				
4	3,75	8,25				
5	5,00	9,50				
6	6,25	10,75				
7	7,50	12,00				
8	8,75	13,25				
9	10,00	14,50				
10	11,25	15,75				
11	12,50	17,00				
12	13,75	18,25				
13	15,00	19,50				
14	16,25	20,75				
15	17,50	22,00				

Wafer Serie T68S1007 Pitch 1,25mm
Part No.: T68S1007-
Customer:

DRW:	Jason	CHKD	Wilson	MATL:	Wilson	TOLERANCE	Mason	DATE	14.01.2021
APPD:	Schumi			FINISH	Jamy		Sheet No.		2 from 4

EDCON-COMPONENTS



Ordering Informations

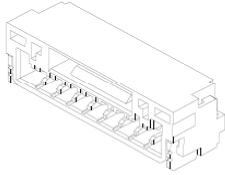
Serie	No. of Pos. like Table	Contact Plating	Packing	Body Colour					
-------	------------------------	-----------------	---------	-------------	--	--	--	--	--

T68S1007-	02	T	TR	xx					
------------------	-----------	----------	-----------	-----------	--	--	--	--	--

xx = Pos.	T= Tin Plated (Standard)	BU= Bulk (Standard)	No letter = Beige						
		TY= Tray Packing	BK= Black MOQ 50K						
	G= Gold Flash Plated (MOQ)	TR= Tape / Reel Packing	RD= Red MOQ 50K						
			YE= Yellow MOQ 50K						
			BL= Blue MOQ 50K						
			GN= Green MOQ 50K						
			OR= Orange MOQ 50K						

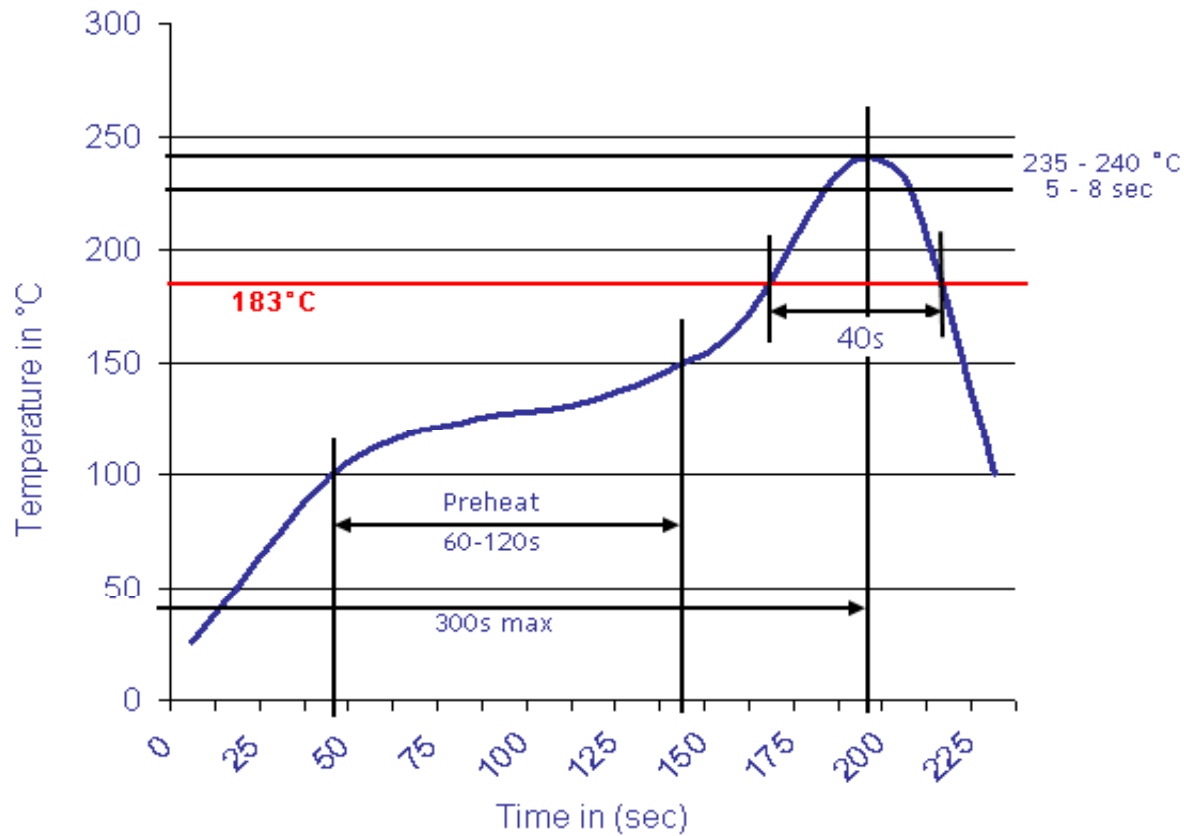
Wafer Serie T68S1007 Pitch 1,25mm
Part No.: T68S1007-
Customer:

DRW:	Jason	CHKD	Wilson	MATL:	Wilson	TOLERANCE	Mason	DATE	14.01.2021
APPD:	Schumi			FINISH	Jamy		Sheet No.		3 from 4



Soldering Profile Curve

Classification Reflow Profile (JEDEC J-STD-020C)



Wafer Serie T68S1007 Pitch 1,25mm	
Part No.:	T68S1007-
Customer:	

DRW:	Jason	CHKD	Wilson	MATL:	Wilson	TOLERANCE	Mason	DATE	14.01.2021
APPD:	Schumi			FINISH	Jamy		Sheet No.	4 from 4	