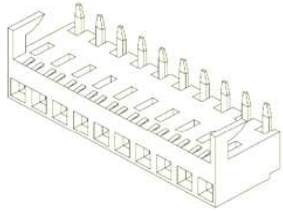


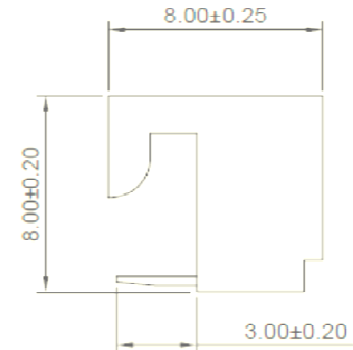
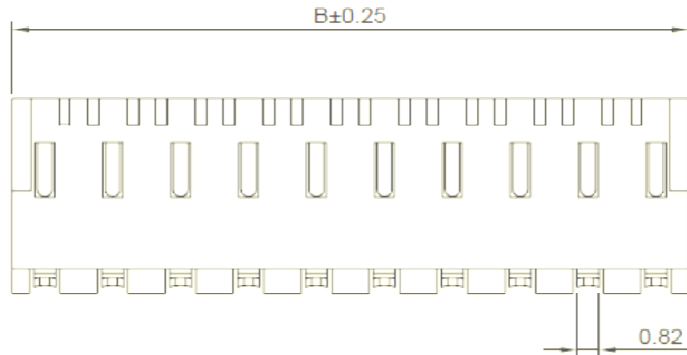
EDCON-COMPONENTS



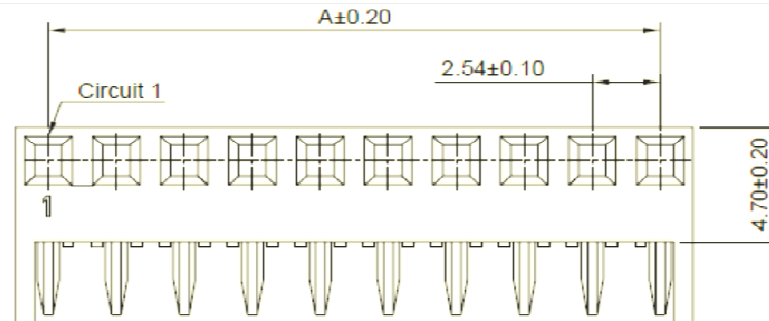
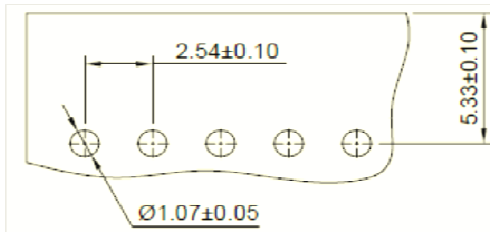
Specifications

Voltage Rating:	250VAC /DC
Current Rating	2,5AC / DC
Operating Temperature	. -40°C ~ +105°C
Contact Resistance	20m Ω Max.
Withstanding Voltage	500V AC/minute
Insulation Resistance	100M Ω Min.
Material Insulator:	Nylon 66 / UL94V-0
Material Pin	Brass
Pin Plating:	SN over NI

Drawing (dimensions all into mm)



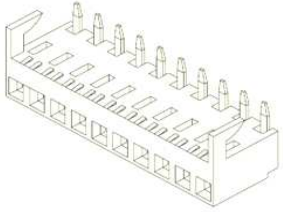
PCB Layout



Wire to Board Serie Pitch 2,54mm with Nose	
Part No.:	T68N002
Customer:	

DRW:	Jason	CHKD	Wilson	MATL:	Wilson	TOLERANCE	Mason	DATE	16.08.2022
APPD:	Schumi			FINISH	Jamy		Sheet No.		1 from 4

EDCON-COMPONENTS



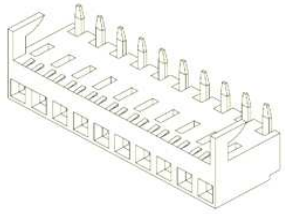
Ordering Informations

Serie	Positions	Body Color	C- Plating	ROHS	Packing					
T68N002	02	NA	TN	R	BU					

Look Table		TN= Tin Plated	R= ROHS Conform	BU= Bulk (Standard)
			N= NON ROHS Conform	
	NA= Natural			

Wire to Board Serie Pitch 2,54mm with Nose	
Part No.:	T68N002
Customer:	

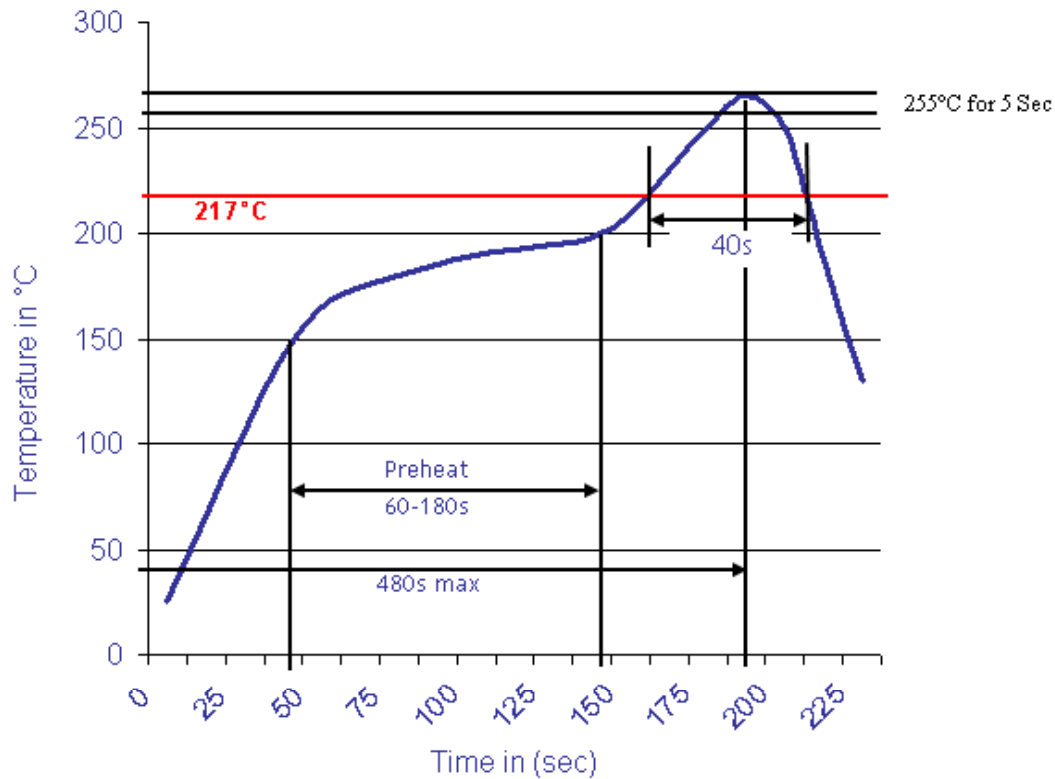
DRW:	Jason	CHKD	Wilson	MATL:	Wilson	TOLERANCE	Mason	DATE	16.08.2022
APPD:	Schumi			FINISH	Jamy		Sheet No.	3 from 4	



Soldering Profile

Lead Free Curve

Classification Reflow Profile (JEDEC J-STD-020C)



Wire to Board Serie Pitch 2,54mm with Nose	
Part No.:	T68N002
Customer:	

DRW:	Jason	CHKD:	Wilson	MATL:	Wilson	TOLERANCE:	Mason	DATE:	16.08.2022
APPD:	Schumi	FINISH:	Jamy			Sheet No.:			4 from 4