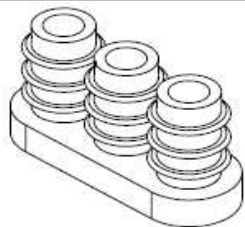


EDCON-COMPONENTS



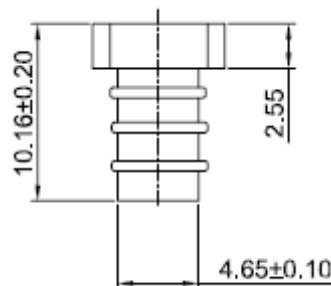
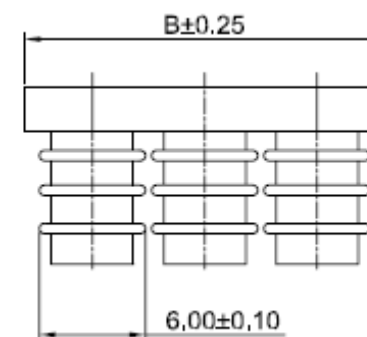
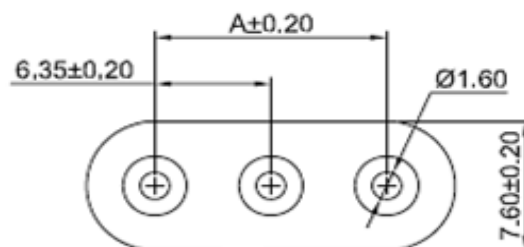
Technical Requirement

2,79mm-3,30mm Insulation diameter passed European IP Sealing level #5/7 (swirling dust / Immerslon to 1Meter for 30Minutes).

1,52mm-2,79mm Insulation diameter passed European IP sealing level #5/6 (Swirling dust / heavy seas)

Wire AWG range is #20-14 with Insulation diameter range from 1,52mm-3,3mm.

Drawing (dimensions all into mm)



Wire to Wire Serie Pitch 6,35mm

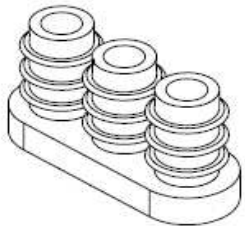
Part No.: **T68M027**

DRW:	Jason	CHKD	Wilson	MATL:	Wilson	TOLERANCE	Mason	DATE	02.04.2009
APPD:	Schumi			FINISH	Jamy		Sheet No.	1 from 3	Customer:

www.edcon-components.com

email: info@edcon-components.com

EDCON-COMPONENTS



Dimension Informations about Seal

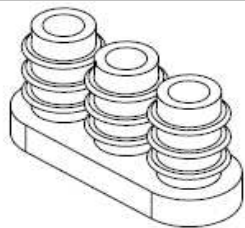
Pos.	Dimension (mm)					
	A	B	C	D	E	F
02P	6,35	14,00				
03P	12,70	20,35				
04P	19,05	26,70				

Pos.	Dimension (mm)					
	A	B	C	D	E	F

Wire to Wire Serie Pitch 6,35mm	
Part No.:	T68M027
Customer:	

DRW:	Jason	CHKD	Wilson	MATL:	Wilson	TOLERANCE	Mason	DATE	02.04.2009
APPD:	Schumi			FINISH	Jamy		Sheet No.		2 from 3

EDCON-COMPONENTS



Ordering Informations

Serie	Number of	Color	ROHS	Packing						
T68M027	02	BL	R	BU						

02 = 2Pos.	BL= Blue	R= ROHS Conform	BU= Bulk (Standard)
03 = 3Pos.		N= NON ROHS Conform	
04 = 4Pos.			

Wire to Wire Serie Pitch 6,35mm
Part No.: T68M027
Customer:

DRW:	Jason	CHKD	Wilson	MATL:	Wilson	TOLERANCE	Mason	DATE	02.04.2009
APPD:	Schumi			FINISH	Jamy		Sheet No.		3 from 3

www.edcon-components.com

email: info@edcon-components.com