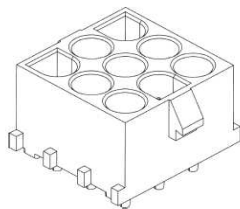


# EDCON-COMPONENTS

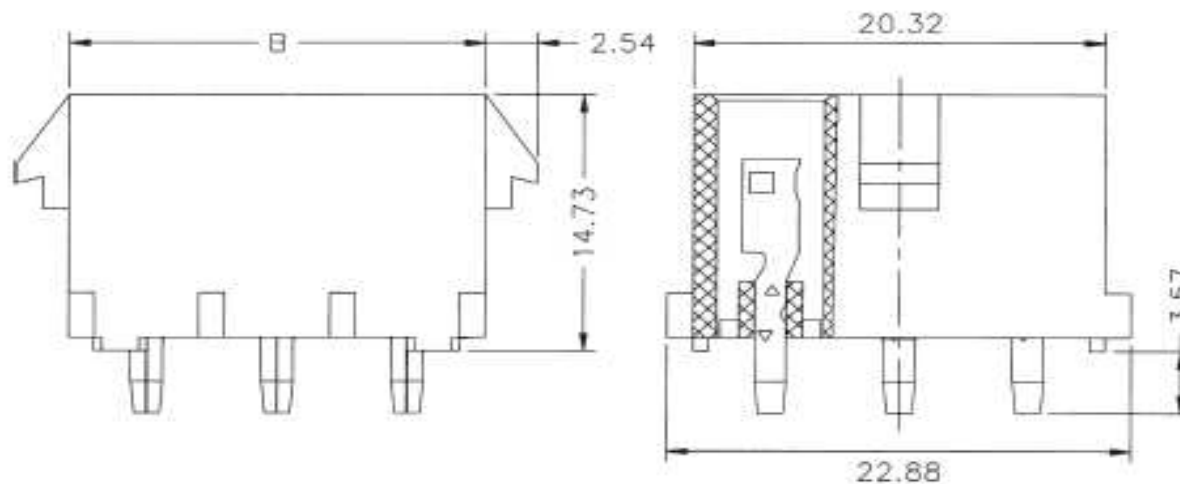


## Specifications

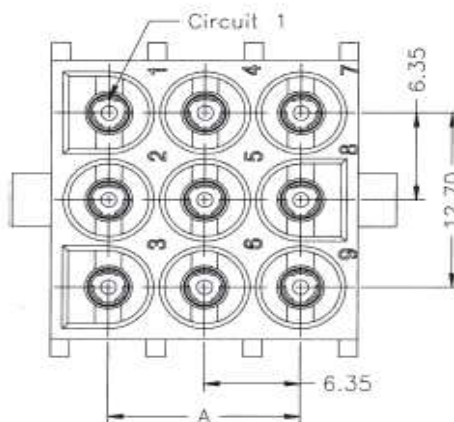
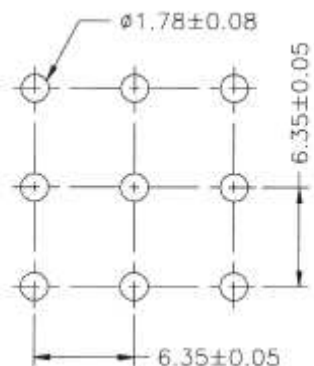
Voltage Rating: 600VAC /DC  
 Current Rating: 15AC / DC  
 Operating Temperature: -25°C ~ +85°C  
 Contact Resistance: 3,5m Ω Max.  
 Withstanding Voltage: 5000V AC/minute  
 Insulation Resistance: 1000M Ω Min.

Material: Nylon 66, UL94V-0 or UL94V-2  
 Material Pin: Brass / Tin-Plated

## Drawing ( dimensions all into mm)



## PCB Layout



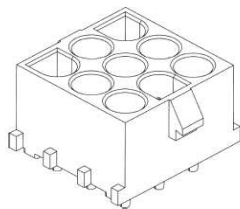
**Female Wire to Board Serie  
 Pitch 6,35mm w/o Polarisation**

Part No.: **T68M007**

DRW:	Jason	CHKD	Wilson	MATL:	Wilson	TOLERANCE	Mason	DATE	02.04.2009
APPD:	Schumi			FINISH	Jamy		Sheet No.	1 from 4	Customer:



# EDCON-COMPONENTS



## Ordering Informations

Serie	Number of	Body	Contact	ROHS	Packing					
<b>T68M007</b>	<b>06</b>	<b>V0</b>	<b>T</b>	<b>R</b>	<b>BU</b>					

<b>06 = 3x2Pos.</b>	<b>V0= Material</b>	<b>T= Tin Plated (Standard)</b>	<b>R= ROHS Conform</b>	<b>BU= Bulk (Standard)</b>
<b>09 = 3x3Pos.</b>	<b>V2= Material</b>		<b>N= NON ROHS Conform</b>	
<b>12 = 3x4Pos.</b>		<b>G= Gold Flash Plated (MOQ on request)</b>		
<b>15 = 3x5Pos.</b>				

**Female Wire to Board Serie  
Pitch 6,35mm w/o Polarisation**

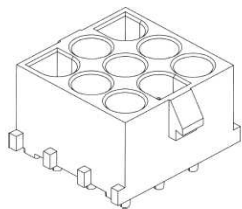
Part No.: **T68M007**

DRW:	Jason	CHKD	Wilson	MATL:	Wilson	TOLERANCE	Mason	DATE	02.04.2009
APPD:	Schumi			FINISH	Jamy		Sheet No.		3 from 4

Customer:

[www.edcon-components.com](http://www.edcon-components.com)

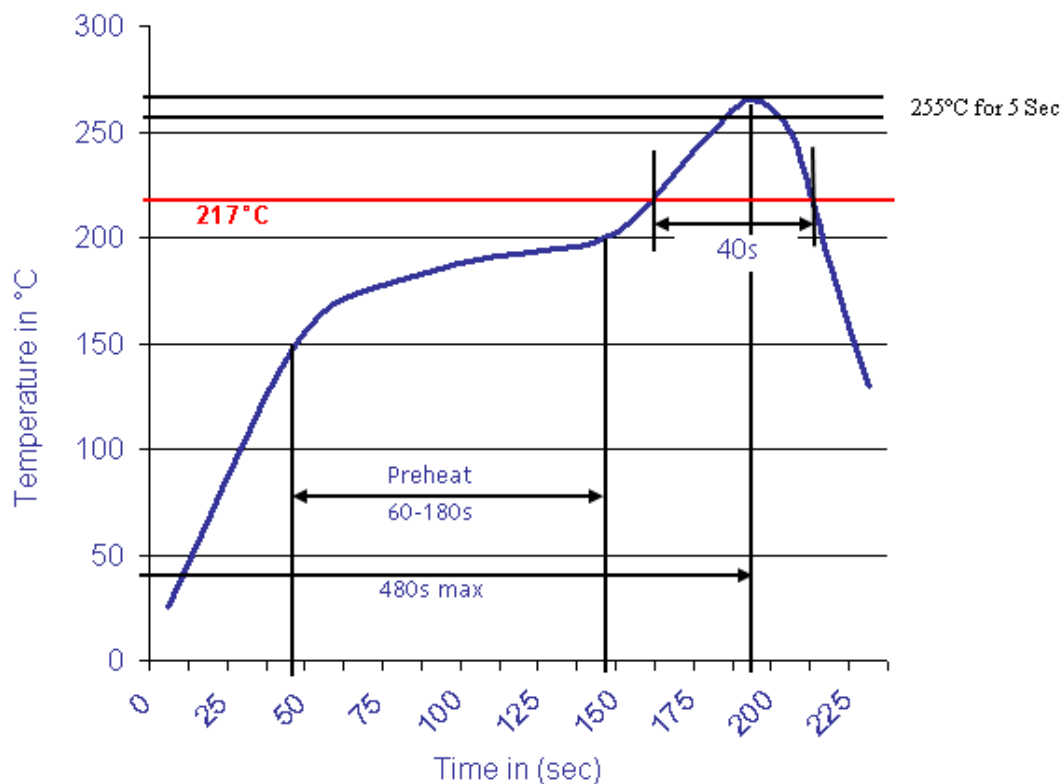
email: [info@edcon-components.com](mailto:info@edcon-components.com)



Soldering Profile

Lead Free Curve

Classification Reflow Profile (JEDEC J-STD-020C)



Female Wire to Board Serie  
Pitch 6,35mm w/o Polarisation

Part No.: **T68M007**

DRW:	Jason	CHKD	Wilson	MATL:	Wilson	TOLERANCE	Mason	DATE	02.04.2009
APPD:	Schumi			FINISH	Jamy		Sheet No.	4 from 4	

Customer: