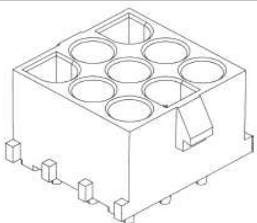


EDCON-COMPONENTS

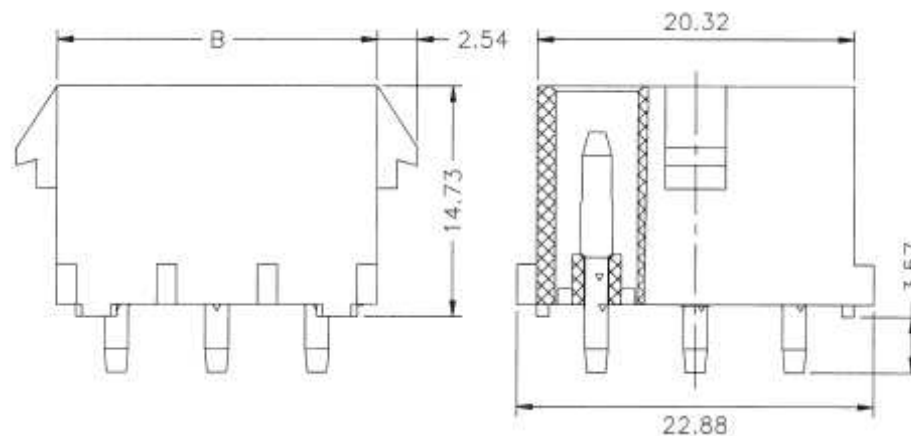


Specifications

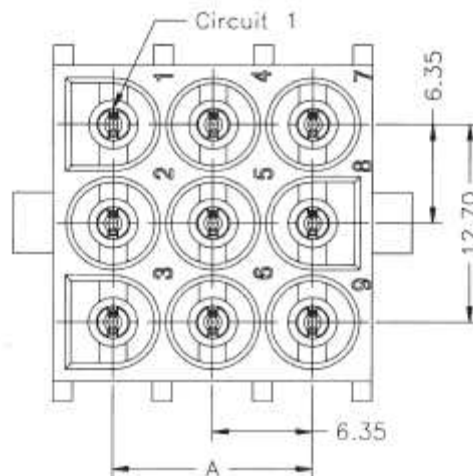
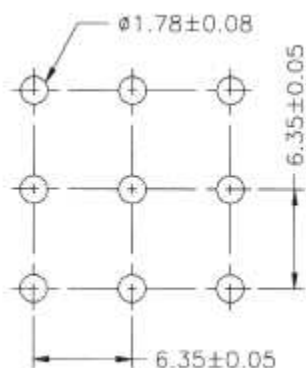
Voltage Rating: 600VAC /DC
 Current Rating: 15AC / DC
 Operating Temperature: -25°C ~ +85°C
 Contact Resistance: 3,5m Ω Max.
 Withstanding Voltage: 5000V AC/minute
 Insulation Resistance: 1000M Ω Min.

Material: Nylon 66, UL94V-0 or UL94V-2
 Material Pin: Brass / Tin-Plated

Drawing (dimensions all into mm)



PCB Layout



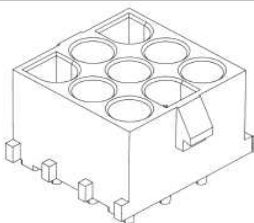
**Wire to Board Serie Pitch
6,35mm w/o Polarisation**

Part No.: **T68M003**

| | | | | | | | | | |
|-------|--------|------|--------|--------|--------|-----------|-----------|------|------------|
| DRW: | Jason | CHKD | Wilson | MATL: | Wilson | TOLERANCE | Mason | DATE | 02.04.2009 |
| APPD: | Schumi | | | FINISH | Jamy | | Sheet No. | | 1 from 4 |

Customer:

EDCON-COMPONENTS



Ordering Informations

| Serie | Number of | Body | Contact | ROHS | Packing | | | | | |
|----------------|-----------|-----------|----------|----------|-----------|--|--|--|--|--|
| T68M003 | 06 | V0 | T | R | BU | | | | | |

| | | | | |
|---------------------|----------------------|--|-----------------------------------|--------------------------------|
| 06 = 3x2Pos. | V0 = Material | T = Tin Plated (Standard) | R = ROHS Conform | BU = Bulk (Standard) |
| 09 = 3x3Pos. | V2 = Material | | N = NON ROHS Conform | |
| 12 = 3x4Pos. | | G = Gold Flash Plated (MOQ on request) | | |
| 15 = 3x5Pos. | | | | |

**Wire to Board Serie Pitch
6,35mm w/o Polarisation**

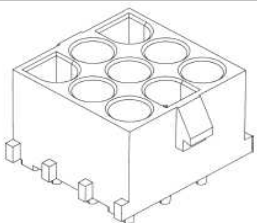
Part No.: **T68M003**

| | | | | | | | | | |
|-------|--------|------|--------|--------|--------|-----------|-----------|------|------------|
| DRW: | Jason | CHKD | Wilson | MATL: | Wilson | TOLERANCE | Mason | DATE | 02.04.2009 |
| APPD: | Schumi | | | FINISH | Jamy | | Sheet No. | | 3 from 4 |

Customer:

www.edcon-components.com

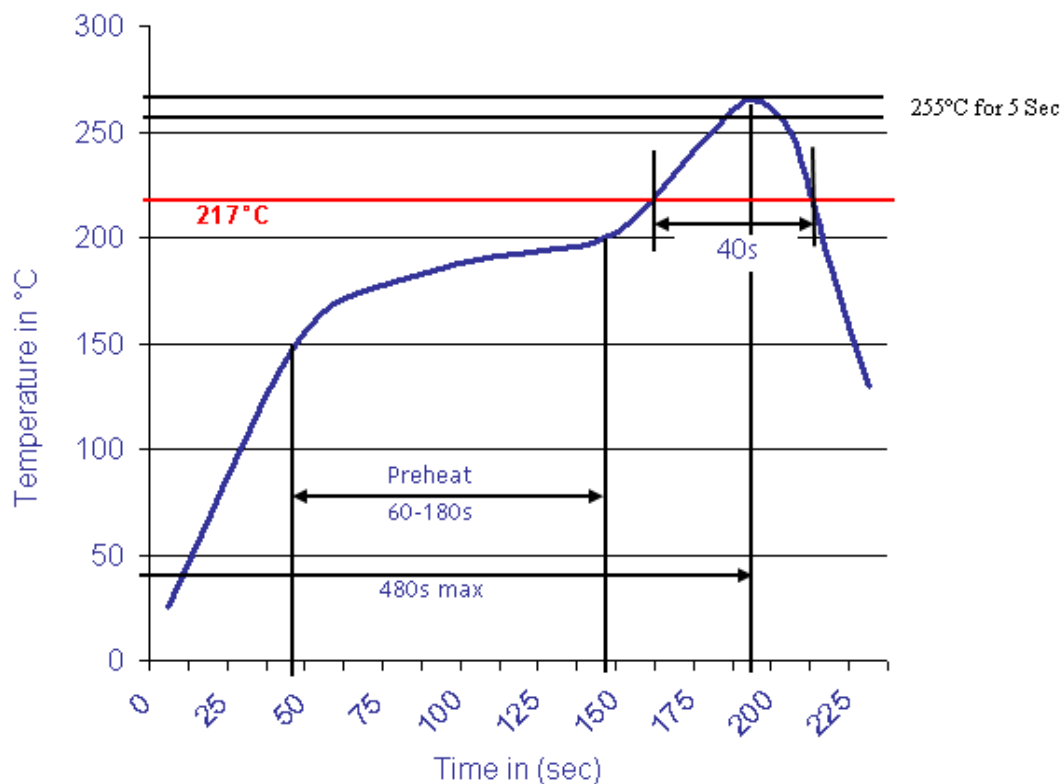
email: info@edcon-components.com



Soldering Profile

Lead Free Curve

Classification Reflow Profile (JEDEC J-STD-020C)



| | |
|--|----------------|
| Wire to Board Serie Pitch 6,35mm w/o Polarisation | |
| Part No.: | T68M003 |
| Customer: | |

| | | | | | | | | | |
|-------|--------|------|--------|--------|--------|-----------|-----------|----------|------------|
| DRW: | Jason | CHKD | Wilson | MATL: | Wilson | TOLERANCE | Mason | DATE | 02.04.2009 |
| APPD: | Schumi | | | FINISH | Jamy | | Sheet No. | 4 from 4 | |