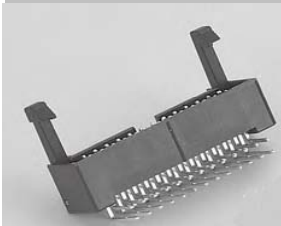


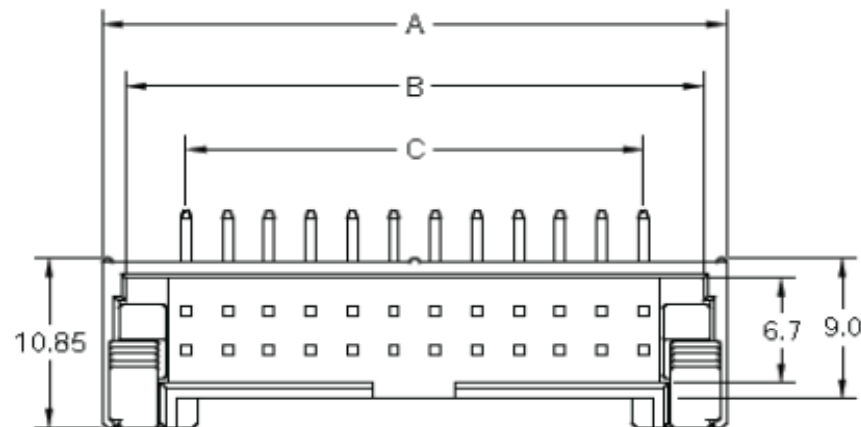
EDCON-COMPONENTS



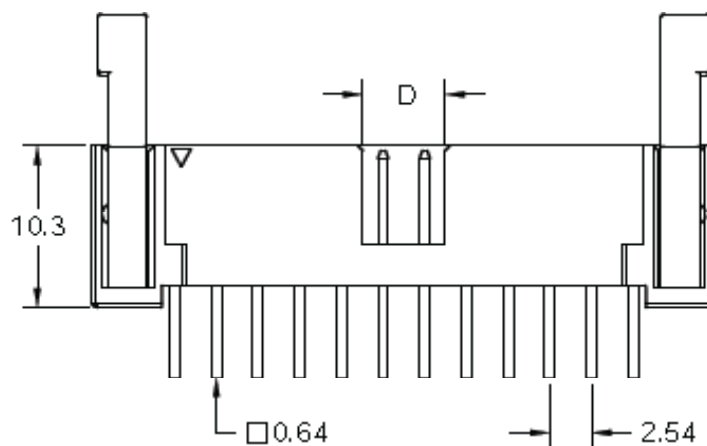
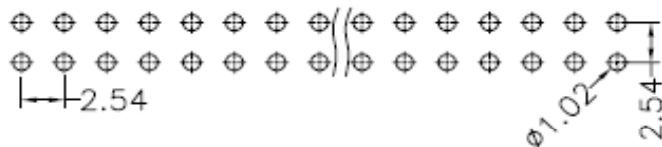
Specifications

Current Rating:	2,0A
Insulation Resistance:	3000M Ohm min.
Contact Resistance:	20milli Ohm max.
Dielectric Voltage:	500V AC for one minute
Operating Temperature:	. -40°C ~ to +105°C
Insulator Material:	PBT, UL94V-0 glass reinforced
Latches Material:	PBT
Contact Pin:	Brass
Standard Contact Plating:	Gold Flash all over

Drawing



PCB Layout



**Box Header w. Side Latch
Pitch 2,54x2,54mm**

Part No.: **T16A029-**

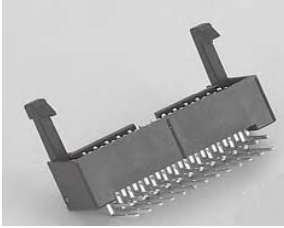
Customer:

DRW:	Jason	CHKD	Wilson	MATL:	Wilson	TOLERANCE	Mason	DATE	16.06.2016
APPD:	Schumi			FINISH	Jamy		Sheet No.	1 from 4	

www.edcon-components.com

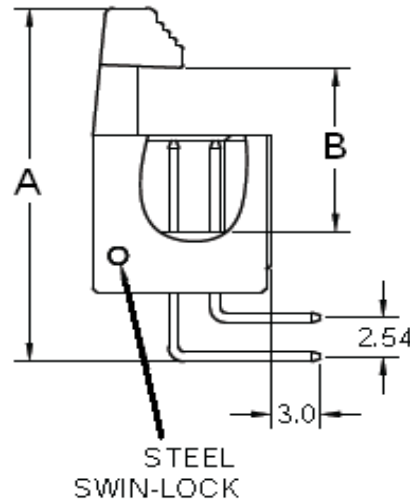
email: info@edcon-components.com

EDCON-COMPONENTS



Pin Code length table free configuration

Dimension (mm)				
	A			
A01	3,20			
A02				
A03				
A04				
A05				
A06				
A07				
A08				
A09				
A10				
A11				
A12				
A13				
A14				
A15				
A16				
A17				
A18				
A19				
A20				
A21				
A22				



Latches Dimension (mm)		
Latches	A	B
Short- Type	23,3	10,6
Long -Tpe	36,7	14,6

Dimension (mm)				
Position	A	B	C	D
6	15,29	12,41	5,08	2,30
8	17,83	14,95	7,62	2,30
10	20,37	17,49	10,16	5,00
12	22,91	20,03	12,70	5,00
14	25,45	22,57	15,24	5,00
16	27,99	25,11	17,78	5,00
20	33,07	30,19	22,86	5,00
24	38,15	35,27	27,94	5,00
26	40,69	37,81	30,48	5,00
30	45,77	42,89	35,56	5,00
34	50,85	47,97	40,64	5,00
40	58,47	55,59	48,26	5,00
50	71,17	68,29	60,96	5,00
60	83,87	81,01	73,66	5,00
64	88,95	86,07	78,74	5,00

**Box Header w. Side Latch
Pitch 2,54x2,54mm**

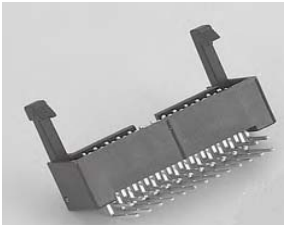
Part No.: **T16A029-**

DRW:	Jason	CHKD	Wilson	MATL:	Wilson	TOLERANCE	Mason	DATE	16.06.2016
APPD:	Schumi			FINISH	Jamy		Sheet No.		2 from 4

Customer:

www.edcon-components.com

email: info@edcon-components.com



Ordering Informations

Serie	No. of Pos.	Contact Plating	Material	Color of Body	Pin Length Configuration	Latches Type	ROHS	Packing		
T16A029-	XX	G0	PB	BK	A01	S	R	BU		

XX= 6, 8, 10, 12, 14, 16, 20, 24, 26, 30, 34, 40, 50, 60, 64	G0= Gold Flash	PB= PBT	BK= Black	Axx= Look Table	S= Short Latch	N= NO ROHS	BU= Bulk Ware
	T0= Tin plated	PA= PA6T + 30% GF					
	GA= 3µ Gold Plating						TY= Tray
	GB= 5µ Gold Plating						
	GC= 10µ Gold Plating						
	GD= 30µ Gold Plating						
	S0= Selectiv Plating Gold Flash / Tin						
	SD= Selectiv Tin/ 5µGold						
	SD= Selectiv Tin/ 10µ Gold Flash						
	SD= Selectiv Tin/ 20µ Gold	SD= Selectiv Tin/ 30µ Gold					

Box Header w. Side Latch Pitch 2,54x2,54mm
Part No.: T16A029-
Customer:

DRW:	Jason	CHKD	Wilson	MATL:	Wilson	TOLERANCE	Mason	DATE	16.06.2016
APPD:	Schumi			FINISH	Jamy		Sheet No.		3 from 4

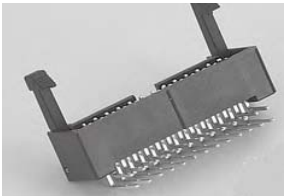
www.edcon-components.com

email: info@edcon-components.com

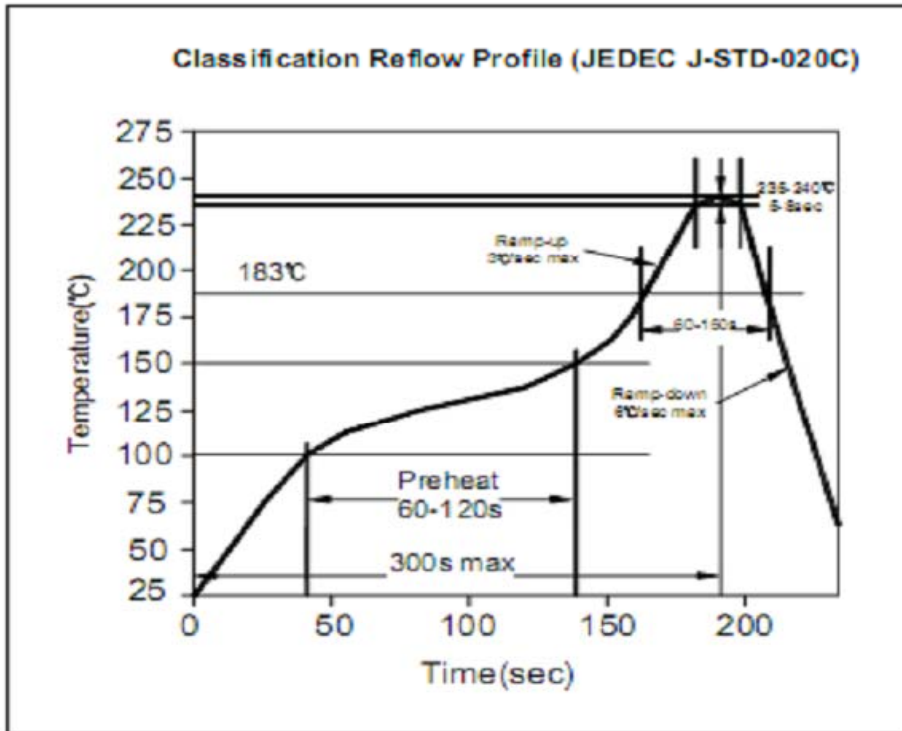
Copyright by S.Tiede

EDCON-COMPONENTS

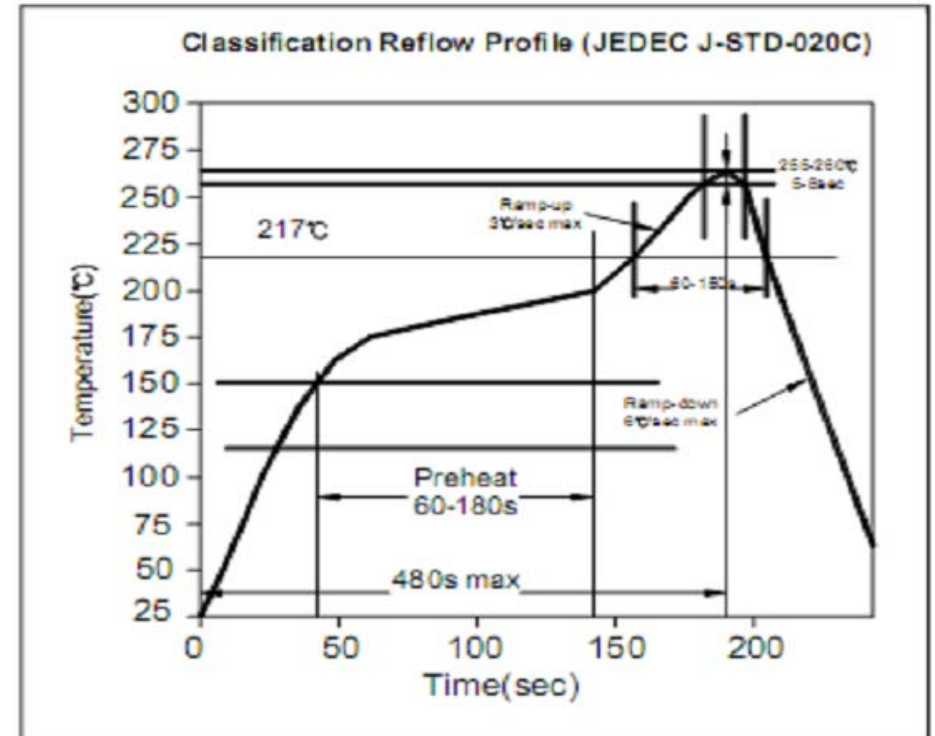




Soldering Profile for Lead Soldering (P.B.T.)



Soldering Profile for Lead Free Soldering (Nylon 6T)



**Box Header w. Side Latch
Pitch 2,54x2,54mm**

Part No.: **T16A029-**

DRW:	Jason	CHKD	Wilson	MATL:	Wilson	TOLERANCE	Mason	DATE	16.06.2016
APPD:	Schumi			FINISH	Jamy		Sheet No.	4 from 4	

Customer: