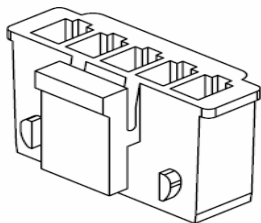


# EDCON-COMPONENTS

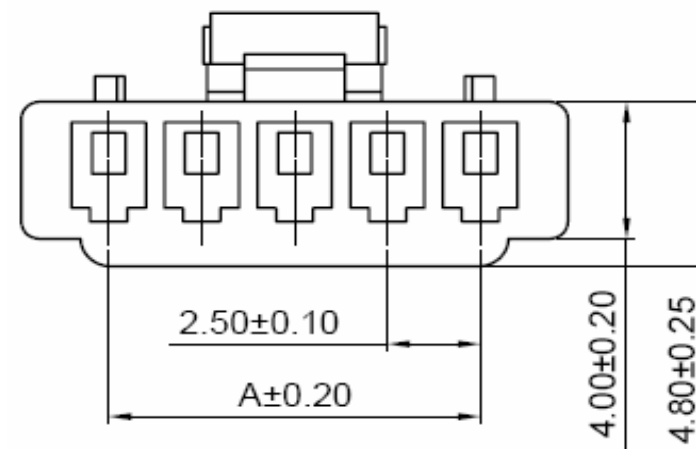
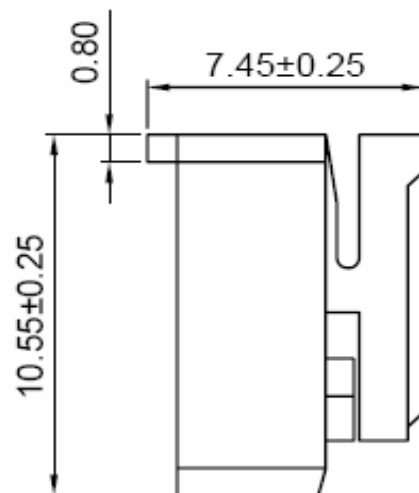
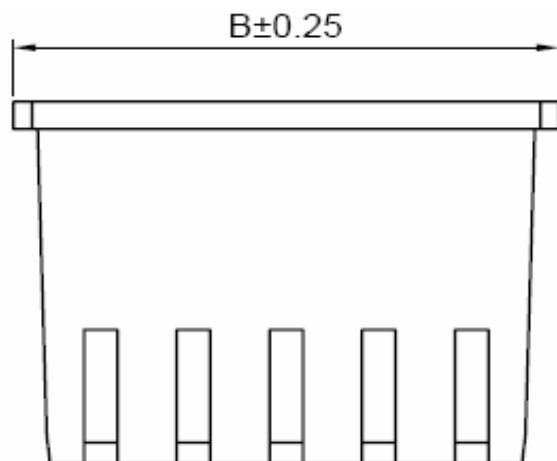


## Specifications

Voltage Rating: 250 V AC/DC  
 Current Rating: 3A AC/DC  
 Operating Temperature: -40°C to + 105°C  
 Contact Resistance: 10 mΩ  
 Withstanding Voltage: 800 V AC/Minute  
 Insulation Resistance: 1000MΩ min.  
 Material Housing: Nylon 66 / UL94V-0

Color of Base: Natural (White)

## Drawing ( dimensions all into mm)



Wafer Serie T68Pxxxx Pitch  
2,50mm

Part No.: **T68P305**

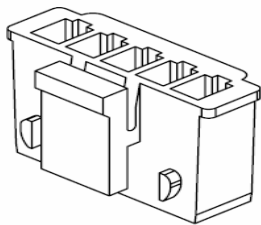
Customer:

DRW:	Jason	CHKD	Wilson	MATL:	Wilson	TOLERANCE	Mason	DATE	10.05.2012
APPD:	Schumi			FINISH	Jamy		Sheet No.	1 from 3	

[www.edcon-components.com](http://www.edcon-components.com)

email: [info@edcon-components.com](mailto:info@edcon-components.com)

# EDCON-COMPONENTS



## Dimension Information

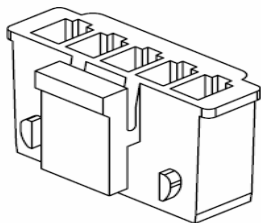
Pos.	Dimension (mm)					
	A	B	C	D	E	F
2	2,50	7,20				
3	5,00	9,70				
4	7,50	12,20				
5	10,00	14,70				
6	12,50	17,20				
7	15,00	19,70				
8	17,50	22,20				
9	20,00	24,70				
10	22,50	27,20				
11	25,00	29,70				
12	27,50	32,20				
13	30,00	34,70				
14	32,50	37,20				
15	35,00	39,70				

Pos.	Dimension (mm)					
	A	B	C	D	E	F

Wafer Serie T68Pxxxx Pitch 2,50mm
Part No.: <b>T68P305</b>
Customer:

DRW:	Jason	CHKD	Wilson	MATL:	Wilson	TOLERANCE	Mason	DATE	10.05.2012
APPD:	Schumi			FINISH	Jamy		Sheet No.		2 from 3

# EDCON-COMPONENTS



## Ordering Informations

Serie	Number of Pos.	Special function	Color of Body	Packing						
<b>T68P305</b>	<b>02</b>	<b>X</b>	<b>NA</b>	<b>BU</b>						
	<b>xx = Pos.</b>	<b>X= no function</b>	<b>NA= Natural (Standard)</b>	<b>BU= Bulk Ware</b>						

Wafer Serie T68Pxxxx Pitch 2,50mm
Part No.: <b>T68P305</b>
Customer:

DRW:	Jason	CHKD	Wilson	MATL:	Wilson	TOLERANCE	Mason	DATE	10.05.2012
APPD:	Schumi			FINISH	Jamy		Sheet No.		3 from 3

[www.edcon-components.com](http://www.edcon-components.com)

email: info@edcon-components.com