

Type Code

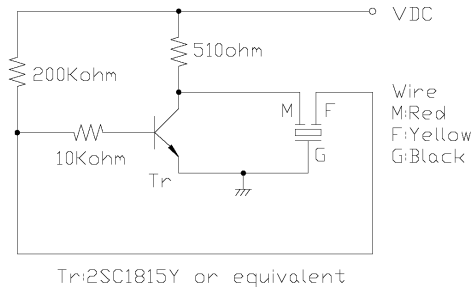
CPT24CF12-6.5-W50:

Chinasound Piezo Transducer 24mm diameter, type C(=4.5mm height), self driven type with Feedback piezo disc, 12VDC voltage – 6.5KHz resonant frequency – Wire length 100mm

Picture



Drive Circuit



Technical Terms

Type	CPT24CF12-6.5-W50	
Rated Voltage	(VDC)	3
Operating Voltage	(VDC)	3~25
Rated Current at 12VDC	(mA)	10 max.
Capacitance at 100Hz	(pF)	12000+/-30%
Sound Output at 12VDC 10cm	(dBA)	85 min.
Resonant Frequency	(Hz)	6500+/-500
Operating Temperature	(°C)	-20~+70
Storage Temperature	(°C)	-30~+80
Weight	(g)	3.3

Reliability

Life Test	Operate the part at 12VDC in room temperature continuously for 1000 hours.
Operating Temperature	Driving from -20 °C to +70 °C within 30 minutes for 2 cycles
High Temperature	+80 °C+/-2 °C, 120hrs
Low Temperature	-30 °C+/-2 °C, 120hrs
Humidity	+60 °C+/-2 °C, 90~95%RH, 120hrs
Thermal Shock	-30 °C+/-2 °C, 1hr→+20 °C,5min,→+80 °C+/-2 °C, 1hr→+20 °C,5min, 5 cycles
Shock	980/s ² (=100g) shock for each 3 mutually perpendicular directions to each of 3 times by half sine wave
Vibration	1.5mm with 10 to 50Hz of vibration frequency to each of 3 perpendicular direction for 2 hrs
Drop Test	Dropped naturally from 700mm height onto the surface of 10mm thick wooden board. 2 directions - upper and side of the part are to be applied.

All specifications must be satisfied after the test (Recovery:2 to 4 hrs of recovery under the standard condition after the removal from test chamber)

Dimensions (Unit:mm)

