

**Description**

**CSET8.5E03-15-2.7F:**

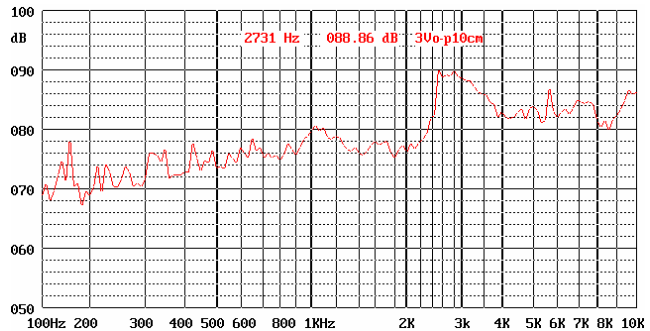
Chinasound SMD Electro-magnetic Transducer 8.5mm length & Width, type E(=2.8mm height, top sound emission hole), 3Vo-p rated voltage - 15ohm coil resistance - 2.731kHz resonant frequency, lead Free solderable and RoHS compliant

- ◆ RoHS compliant
- ◆ Small size
- ◆ Reflowing Solderable
- ◆ Flame Retardant Plastic
- ◆ Tape and reel packaging for auto mounting

**Picture**



**Frequency Response Curve**



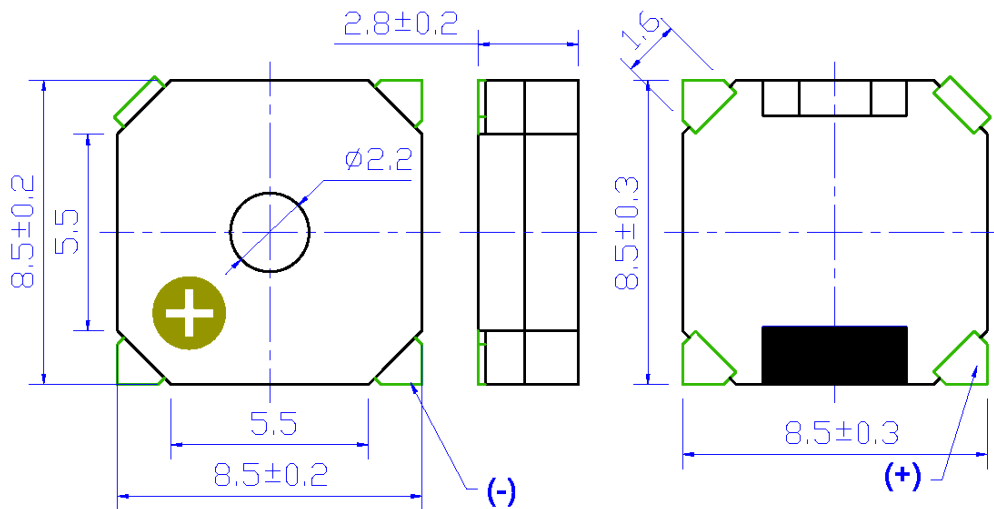
**Specification**

Rated Voltage	3 Vo-p square wave, 1/2 duty square wave
Operating Voltage	2-4 Vo-p square wave, 1/2 duty square wave
Rated Current	80 mA max. at 3 Vo-p square wave, 1/2 duty square wave, 2731Hz
Coil Resistance	15+/-3 ohm
Sound Output	82dB min. ( Typ. 88 dB ) at 3 Vo-p square wave, 1/2 duty square wave, 10cm, 2731Hz
Operating Frequency	2731+/-500Hz
Operating Temperature	-30 °C to +85 °C
Storage Temperature	-40 °C to +90 °C
Termination	4 soldering pads, Sn plated Brass
Construction Materials	Case Plastic, LCP Vectra E130i Diaphragm Ni Alloy Disc N50
Weight (Typical)	0.6 g
Reliability	*Life Test At 3 Vo-p in room temperature continuously for 1000 hours *High Temperature no function at +90+/-2 °C for 96 hours, function at +85+/-2 °C for 96 hours, *Low Temperature no function at -40+/-2 °C for 96 hours, function at -30+/-2 °C for 96 hours, *Humidity 25+/-2 °C, 90-95%RH, 5hr→up to 55+/-2 °C, 90-95%RH, 0.5hr →55+/-2 °C, 90-95%RH, 5hr→down to 25+/-2 °C, 90-95%RH, 0.5hr, 10 cycles *Thermal Shock -40+/-2 °C, 30min→+20 °C,15min,→+85+/-2 °C, 30min→+20 °C,15min, 5 cycles *Vibration 1.5mm with 10 to 50Hz of vibration frequency to each of 3 perpendicular direction for 2 hrs *Shock 98m/s <sup>2</sup> (=10g) shock for each mutually perpendicular directions, half sine wave, 3 times each *Drop Test Dropped naturally from 750mm height onto the surface of 10mm wooden board. 2 directions – upper and side of the part are applied *Soldering Heat Resistance Samples put through reflowing soldering oven 2 twice **Solderability Samples put on PCB with solder paste through reflowing soldering oven 1 times

**Warranty**

\* All specifications must be satisfied after the test (Recovery:2 to 4 hrs of recovery under the standard condition after the removal from test chamber).  
\*\*90% min. soldering pads shall be with solder.(except the edge of pad)

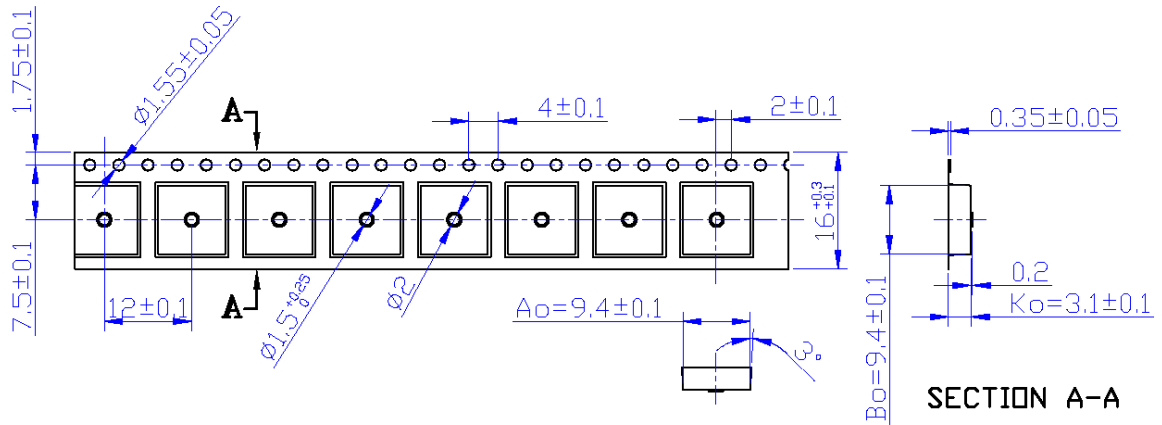
**Dimensions ( Unit: mm )**



All specifications are subject to change without notice

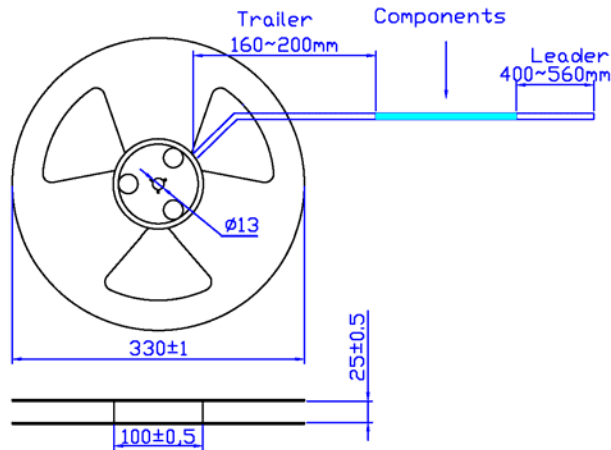


**Tape & Reel Dimensions (Unit:mm)**

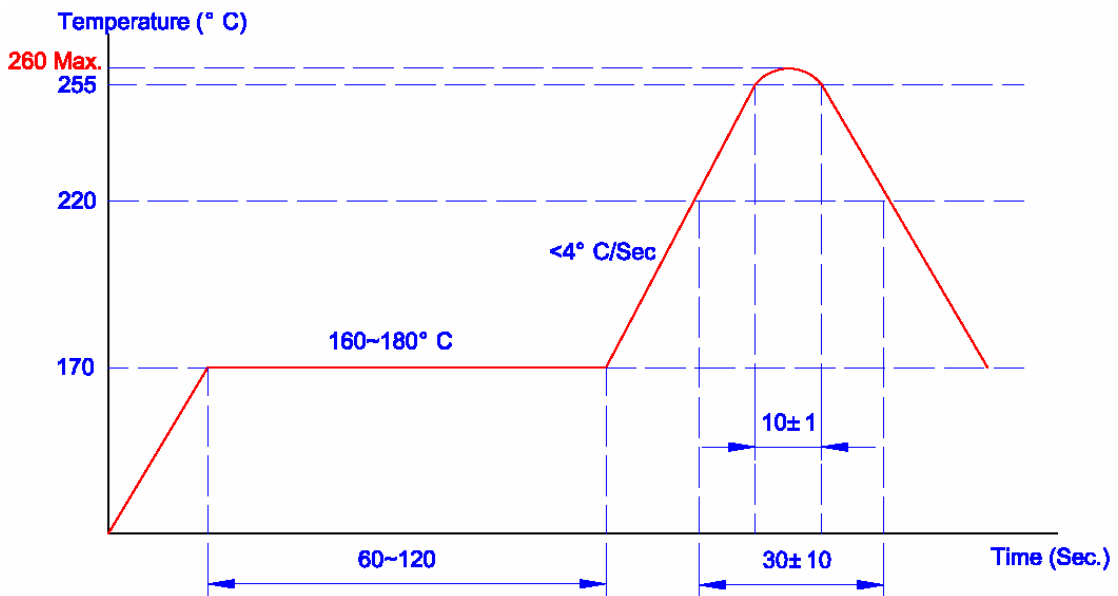


**NOTE:**

1. 10 sprocket hole pitch cumulative tolerance  $\pm 0.20$  mm.
2. Carrier camber is 1 mm in 100 mm.
3. A<sub>0</sub> and B<sub>0</sub> measured on a plane on a place 0.30 mm above the bottom of the pocket.
4. K<sub>0</sub> measured from a plane on the inside bottom of the pocket to the top surface of the carrier.
5. All dimensions meet EIA-481-2-A requirements.
6. Component load per 13" Reel: 1200 pcs.



**Recommend Reflowing Profile**



All specifications are subject to change without notice