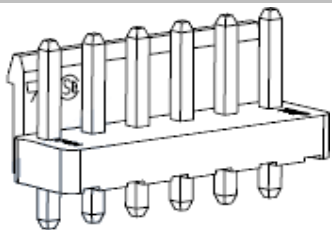


EDCON-COMPONENTS



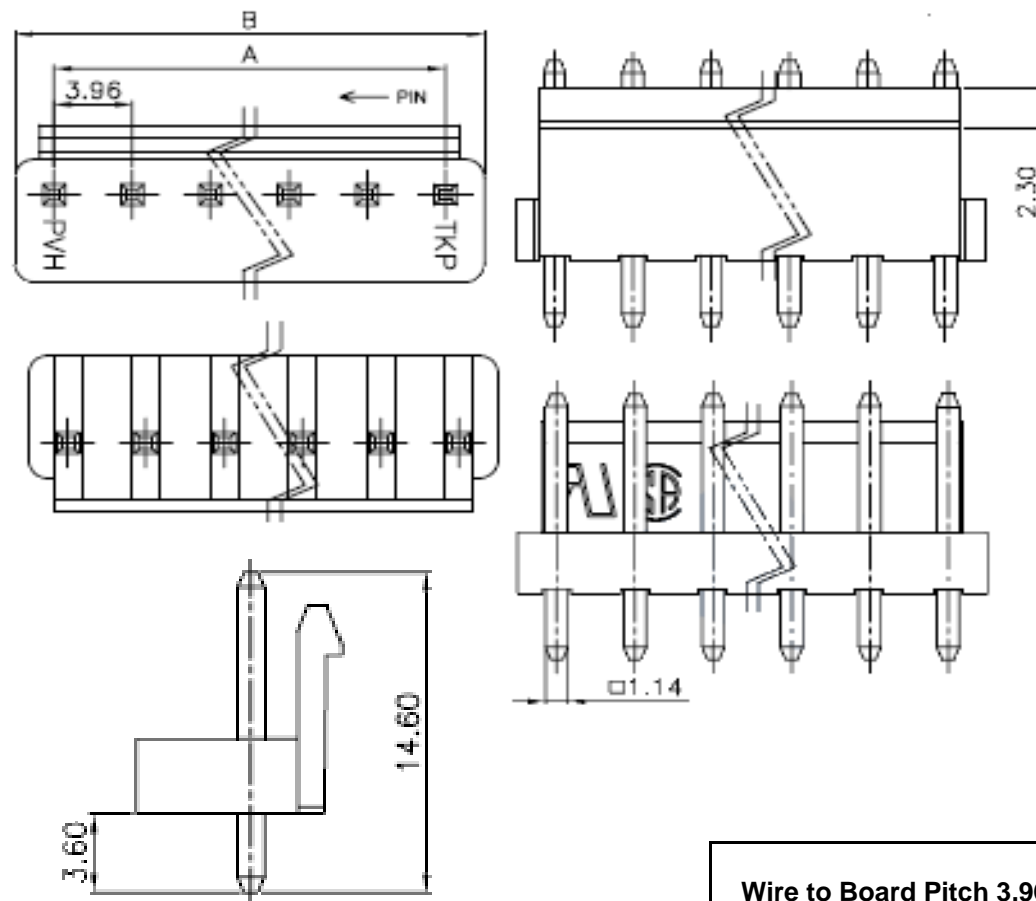
Specifications

	UL	CSA	TUV
Voltage Rating:	300V	250V	250V
Current Rating	8.3A AC/DC	6A AC/DC	7A AC/DC
Operating Temperature	---	---	---
Contact Resistance	---	---	---
Withstanding Voltage	---	---	---
Insulation Resistance	---	---	---
Material Insulator:	Nylon UL 94V-0		
Contact:	Brass		
Finish:	Tin Plated / Gold Flash or Nickel		

PCB Layout



Drawing (dimensions all into mm)



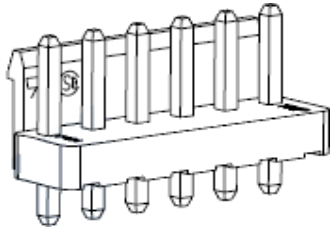
Wire to Board Pitch 3,96mm

Part No.: **T68J008**

Customer:

DRW:	Jason	CHKD	Wilson	MATL:	Wilson	TOLERANCE	Mason	DATE	02.04.2009
APPD:	Schumi			FINISH	Jamy		Sheet No.		1 from 4

EDCON-COMPONENTS



Ordering Informations

Serie	Positions	Body Color	C- Plating	ROHS	Packing					
T68J008	02	WH	TN	R	BU					

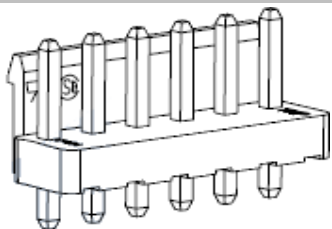
Look Table	WH = White (Standard)	TN = Tin Plated	R = ROHS Conform	BU = Bulk (Standard)
	BK = Black (MOQ)	GF = Gold Flash	N = NON ROHS Conform	
		NK =Nickel		

Wire to Board Pitch 3,96mm

Part No.: **T68J008**

DRW:	Jason	CHKD	Wilson	MATL:	Wilson	TOLERANCE	Mason	DATE	02.04.2009
APPD:	Schumi			FINISH	Jamy		Sheet No.		3 from 4

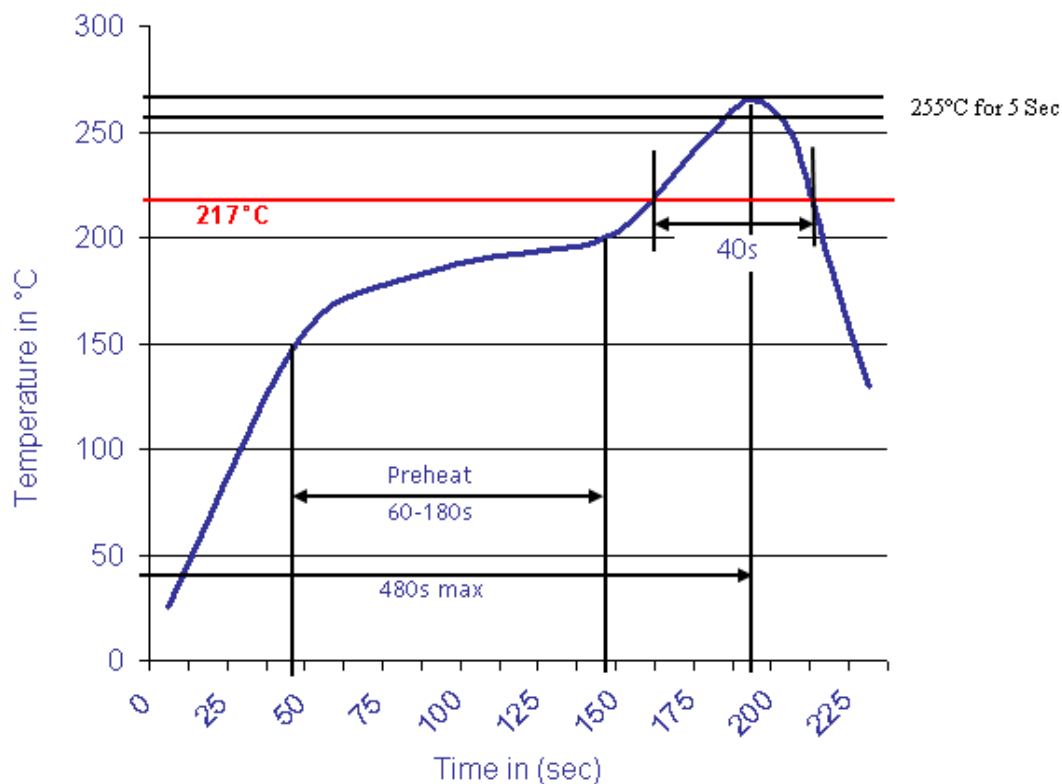
Customer:



Soldering Profile

Lead Free Curve

Classification Reflow Profile (JEDEC J-STD-020C)



Wire to Board Pitch 3,96mm

Part No.: **T68J008**

DRW:	Jason	CHKD	Wilson	MATL:	Wilson	TOLERANCE	Mason	DATE	02.04.2009	Customer:
APPD:	Schumi			FINISH	Jamy		Sheet No.	4 from 4		