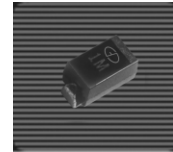


GNOA-S thru GNOM-S

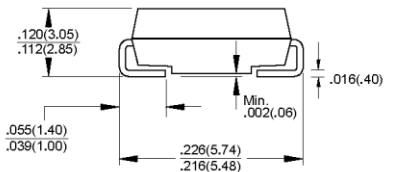
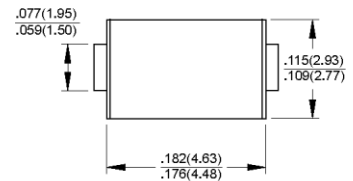
1.5 Amps. Surface Mount Glass Passivated Rectifiers
Voltage Range 50 to 1000 Volts Forward Current 1.5 Amperes

Features

- ◆ Plastic package has Underwriters Laboratory Flammability Classification 94V-0
- ◆ For surface mounted applications
- ◆ Low profile package
- ◆ Built-in strain relief, ideal for automated placement
- ◆ Easy pick and place
- ◆ Glass passivated chip junction
- ◆ High temperature soldering:
260°C/10 seconds at terminals



DO-214AC (SMAJ)



Dimensions in inches and (millimeters)

Mechanical Data

- ◆ Case: New SMA molded plastic over glass passivated chip
- ◆ Terminals: Solder plated, solderable per MIL-STD-750, Method 2026
- ◆ Polarity: Color band denotes cathode end
- ◆ Weight: 0.004 ounce, 0.118 gram

Maximum Ratings and Electrical Characteristics

Ratings at 25°C ambient temperature unless otherwise specified.

Single phase, half wave, 60Hz, resistive or inductive load.

For capacitive load, derate current by 20%

Parameter	Symbols	GNOA-S	GNOB-S	GNOD-S	GNOG-S	GNOJ-S	GNOK-S	GNOM-S	Units
Maximum repetitive peak reverse voltage	V_{RRM}	50	100	200	400	600	800	1000	Volts
Maximum RMS voltage	V_{RMS}	35	70	140	280	420	560	700	Volts
Maximum DC blocking voltage	V_{DC}	50	100	200	400	600	800	1000	Volts
Maximum average forward rectified current See Fig.1	$I_{(AV)}$	1.5							Amps
Peak forward surge current, 8.3ms single half sine-wave superimposed on rated load (JEDEC Method)	I_{FSM}	50.0							Amps
Maximum instantaneous forward voltage @ 1.5A	V_F	1.1							Volts
Maximum DC reverse current @ $T_A=25^\circ\text{C}$ at rated DC blocking voltage @ $T_A=125^\circ\text{C}$	I_R	5.0 200							μA μA
Maximum reverse recovery time (Note 1)	t_{rr}	2.0							μs
Typical junction capacitance (Note 2)	C_J	30							pF
Operating temperature range	T_J	-55 to +150							$^\circ\text{C}$
Storage temperature range	T_{STG}	-55 to +150							$^\circ\text{C}$

Notes: 1. Reverse Recovery Test Conditions: $I_F=0.5\text{A}$, $I_R=1.0\text{A}$, $I_{RR}=0.25\text{A}$

2. Measured at 1 MHz and Applied $V_R=4.0$ Volts

RATINGS AND CHARACTERISTIC CURVES

FIG.1- MAXIMUM FORWARD CURRENT DERATING CURVE

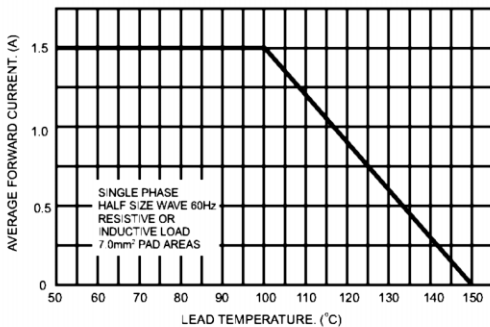


FIG.2- MAXIMUM NON-REPETITIVE FORWARD SURGE CURRENT

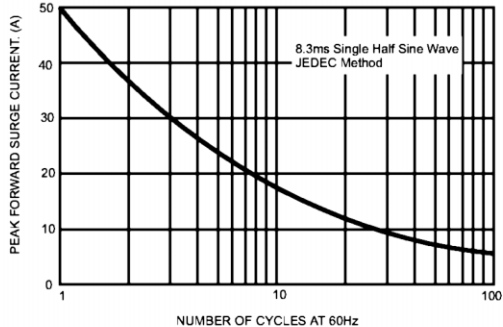


FIG.3- TYPICAL FORWARD CHARACTERISTICS

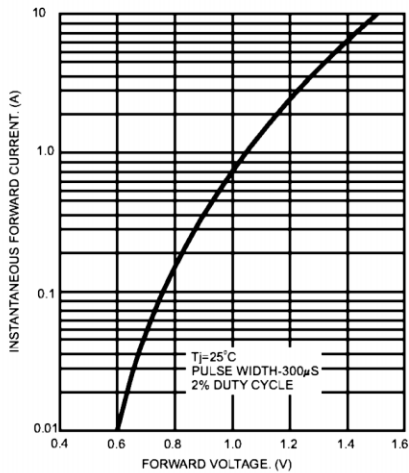


FIG.4- TYPICAL REVERSE CHARACTERISTICS

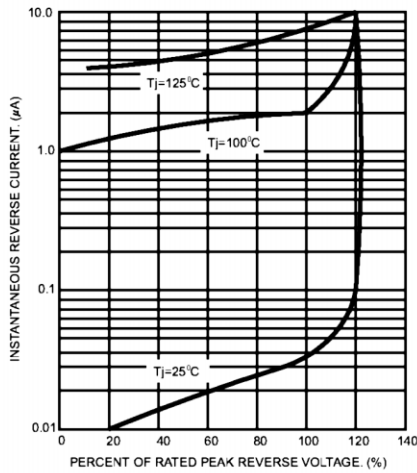


FIG.5- TYPICAL JUNCTION CAPACITANCE

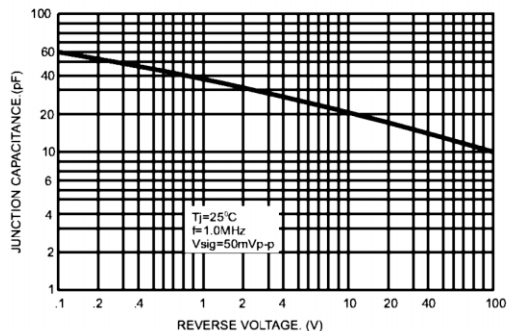
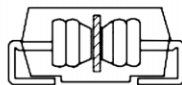


Figure :
New SMA Assembly



Round Lead
Process