

# EDCON-COMPONENTS

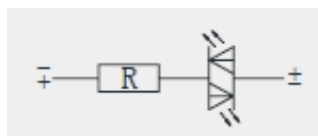


## Specifications

Switch Rating:	5A/250V
Contact Configuration:	1NO1NC / 2NO2NC
Operating Type:	Momentary / Alternate
IP-Degree:	IP67
Crust Material:	Stainless Steel
Terminal Type:	Solder Lug (2,8x0,5mm)
Switching:	ON / OFF
Contact Resistance:	≤ 50mΩ
Insulation Resistance:	≥ 1000MΩ
Dielectric Strength:	2000VAC
Operating Temperature:	.-20°C ~ +55°C
Mechanical Life:	1.000.000 cycles
Electrical Life:	50.000 cycles
Panel Thickness:	1 ~ 10mm
Torque:	5 ~ 14Nm
Operating Pressure:	About 4N
Operating Distance:	About 2,5Nm

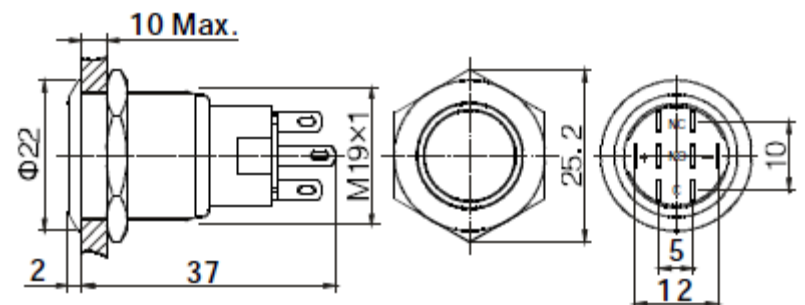
## Material

Contact:	Silver Alloy						
Button:	Stainless Steel						
Body:	Stainless Steel						
Base:	PBT						
<b>ROHS:</b>	Made to Order-Code						
Type:	Illuminated (LED)						
Color:	<table border="0" style="display: inline-table;"> <tr> <td style="background-color: red; color: white; padding: 2px;">R</td> <td style="background-color: yellow; color: black; padding: 2px;">Y</td> <td style="background-color: orange; color: black; padding: 2px;">O</td> </tr> </table> <table border="0" style="display: inline-table;"> <tr> <td style="background-color: green; color: white; padding: 2px;">G</td> <td style="background-color: cyan; color: black; padding: 2px;">B</td> <td style="background-color: grey; color: white; padding: 2px;">W</td> </tr> </table>	R	Y	O	G	B	W
R	Y	O					
G	B	W					
Rated Voltage:	AC/DC 1,7V      AC/DC 2,8V						
Rated Current:	20mA						
Lifetime:	40000Hrs						



Red/Green

## Drawing



Top View

Terminal Arrangement

Current Limiting Resistance Configuration Table

Operating Voltage (U)	6V	12V	24V	36V
<b>R</b> <b>Y</b> <b>O</b>	210Ω, 1/4W	510Ω, 1/4W	1,2KΩ, 1/4W	2,2KΩ, 1/4W
<b>G</b> <b>B</b> <b>W</b>	160Ω, 1/4W	470Ω, 1/4W	1,2KΩ, 1/4W	2,2KΩ, 1/4W

Formula	
R=	$\frac{U - U_e}{I_e}$

<b>19MM Anti-Vandal-Switch</b>
--------------------------------

Part No.: **Q35013**

DRW:	Jason	CHKD	Wilson	MATL:	Wilson	TOLERANCE	Mason	DATE	03.03.2019	Customer:
APPD:	Schumi			FINISH	Jamy		Sheet No.	1 from 3		

# EDCON-COMPONENTS



## Visual Effect of Surface


















Nickel - plated brass  
(Satin surface)



Stainless steel (Spiral surface)



Gold - plated brass (Satin surface)

Order Code	 A4	 A3	 A2	 A1
Order Code	 A8	 A7	 A6	 A5
Order Code	 B3	 B2	 B1	 A9
Order Code	 Bx	You can create our own symbol Bx	 B5	 B4

<b>19MM Anti-Vandal-Switch</b>	
Part No.:	<b>Q35013</b>
Customer:	

DRW:	Jason	CHKD	Wilson	MATL:	Wilson	TOLERANCE	Mason	DATE	03.03.2019
APPD:	Schumi			FINISH	Jamy		Sheet No.		2 from 3

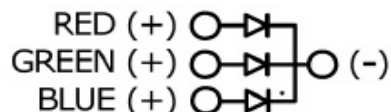
# EDCON-COMPONENTS



## Ordering Informations

Serie	Front Shape	Contact Structure	Lamp Type	Connect Type	Lamp Color	Lamp Voltage	Crust Material	Engraving Options	ROHS	Packing Style
<b>Q35013</b>	<b>F</b>	<b>10</b>	<b>R</b>	<b>3</b>	<b>A</b>	<b>0</b>	<b>S</b>	<b>00</b>	<b>R</b>	<b>N</b>

<b>F= Flat</b>	<b>11= 1NO1NC Momentary</b>	<b>R= RING-Size</b> 	<b>3= Pin Terminal</b>	<b>A= No Function</b> <b>R= Red</b> <b>G= Green</b> <b>Y= Yellow</b> <b>O= Orange</b> <b>B= Blue</b> <b>W= White</b> <b>P= Dual LED Red/Green</b> <b>Z= Dual LED Red/Blue</b> <b>Y= Dual LED Green/Blue</b> <b>T= RGB-LED Tripple Colour</b>	<b>0= with 0R Resistor before LED</b> <b>1= 6V AC/DC</b> <b>2= 12V AC/DC</b> <b>3= 24V AC/DC</b> <b>4= 36V AC/DC</b> <b>5= 48V AC/DC</b> <b>6= 110V AC/DC</b> <b>7= 230V AC/DC</b> <b>X= can we make by order</b>	<b>S= Stainless Steel</b> <b>N= Nickel Plated Brass</b> <b>G= Gold Plated Brass</b> <b>K= Zn-Alloy (colorized Button Black)</b> <b>B= Zn-Alloy (colorized Button Bronze)</b>	<b>00= No function</b> <b>R= ROHS Conform</b> <b>N= NON ROHS Conform</b>	<b>N= White Carton</b> <b>I= Individual Packing</b>
----------------	-----------------------------	-------------------------	------------------------	--	---	--	--	--



<b>19MM Anti-Vandal-Switch</b>	
Part No.:	<b>Q35013</b>
Customer:	

DRW:	Jason	CHKD	Wilson	MATL:	Wilson	TOLERANCE	Mason	DATE	03.03.2019
APPD:	Schumi			FINISH	Jamy		Sheet No.		3 from 3