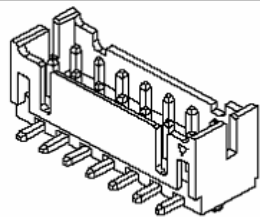


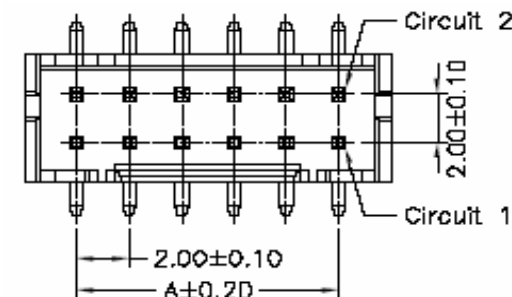
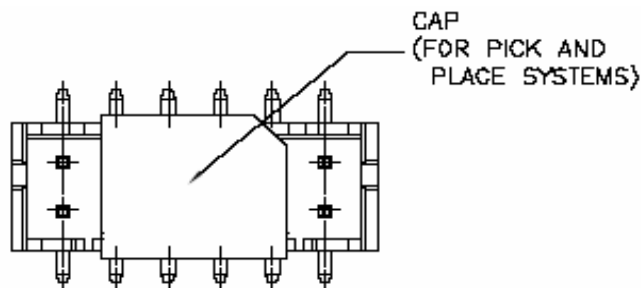
# EDCON-COMPONENTS



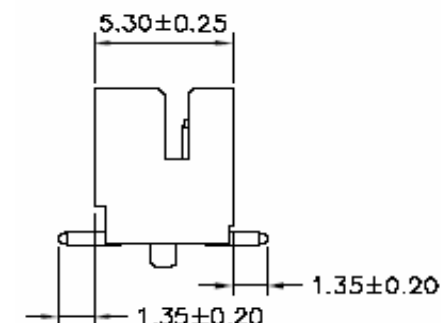
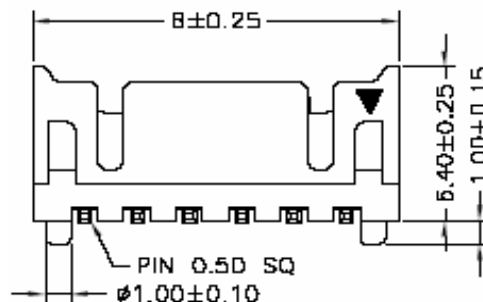
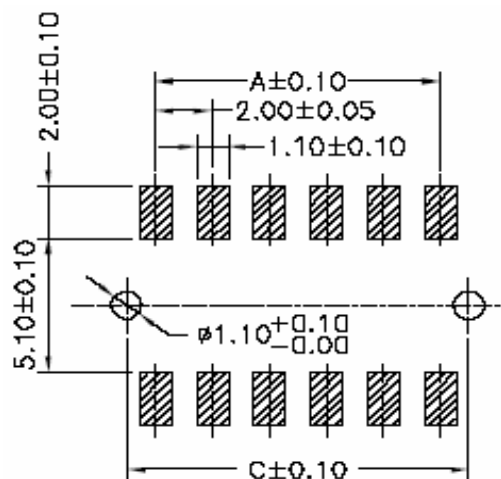
## Specifications

Voltage Rating:	250 V AC/DC
Current Rating:	2A AC/DC
Operating Temperature:	-25°C to + 85°C
Contact Resistance:	30 mΩ
Withstanding Voltage:	800 V AC/Minute
Insulation Resistance:	1000MΩ min.
Material Housing:	Nylon 46 / UL94V-0
Pin-Material:	Brass / Gold Flash Plated
Color of Base:	Natural (Beige)
Solder Tabs:	Brass / Tin plated

## Drawing ( dimensions all into mm)



## P.C.B. Layout



Wafer Serie T68Txxxx Pitch  
2,00mm

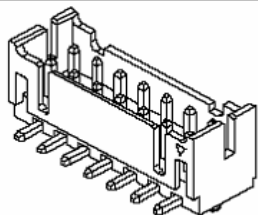
Part No.: **T68T311**

DRW:	Jason	CHKD	Wilson	MATL:	Wilson	TOLERANCE	Mason	DATE	02.04.2009
APPD:	Schumi			FINISH	Jamy		Sheet No.		1 from 4

Customer:



# EDCON-COMPONENTS



## Ordering Informations

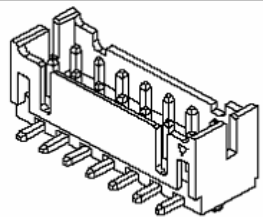
Serie	Number of Pos.	Body Material	Color of Body	Packing						
-------	----------------	---------------	---------------	---------	--	--	--	--	--	--

<b>T68T311</b>	<b>02</b>	<b>46</b>	<b>BG</b>	<b>TR</b>						
----------------	-----------	-----------	-----------	-----------	--	--	--	--	--	--

<b>xx = Pos.</b>	<b>46=</b> Nylon 46	<b>BG=</b> Beige	<b>TR=</b> Tape / Reel Packing							
	<b>6T=</b> Nylon 6T									

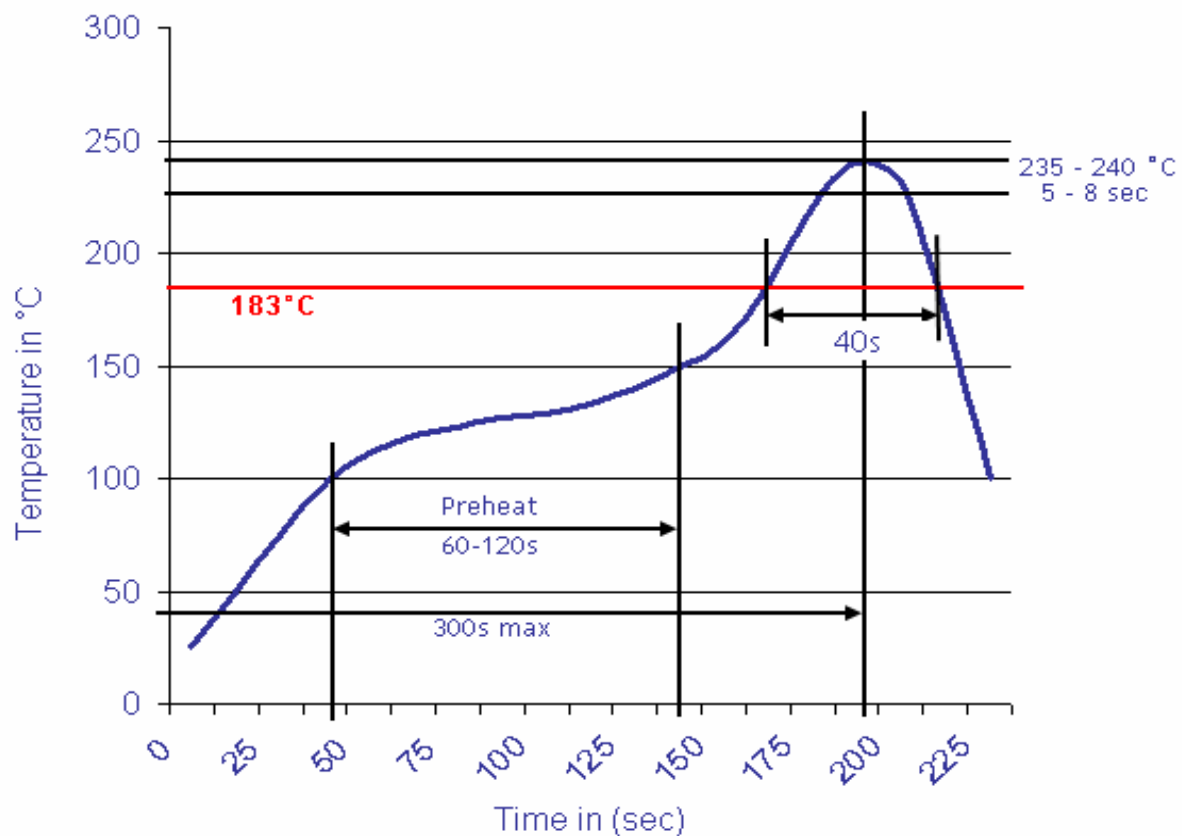
Wafer Serie T68Txxxx Pitch 2,00mm
Part No.: <b>T68T311</b>
Customer:

DRW:	Jason	CHKD	Wilson	MATL:	Wilson	TOLERANCE	Mason	DATE	02.04.2009
APPD:	Schumi			FINISH	Jamy		Sheet No.		3 from 4



Soldering Profile Curve

Classification Reflow Profile (JEDEC J-STD-020C)



Wafer Serie T68Txxxx Pitch  
2,00mm

Part No.: **T68T311**

DRW:	Jason	CHKD	Wilson	MATL:	Wilson	TOLERANCE	Mason	DATE	02.04.2009	Customer:
APPD:	Schumi			FINISH	Jamy		Sheet No.	4 from 4		