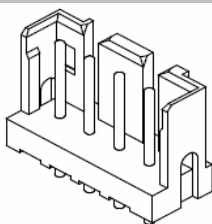


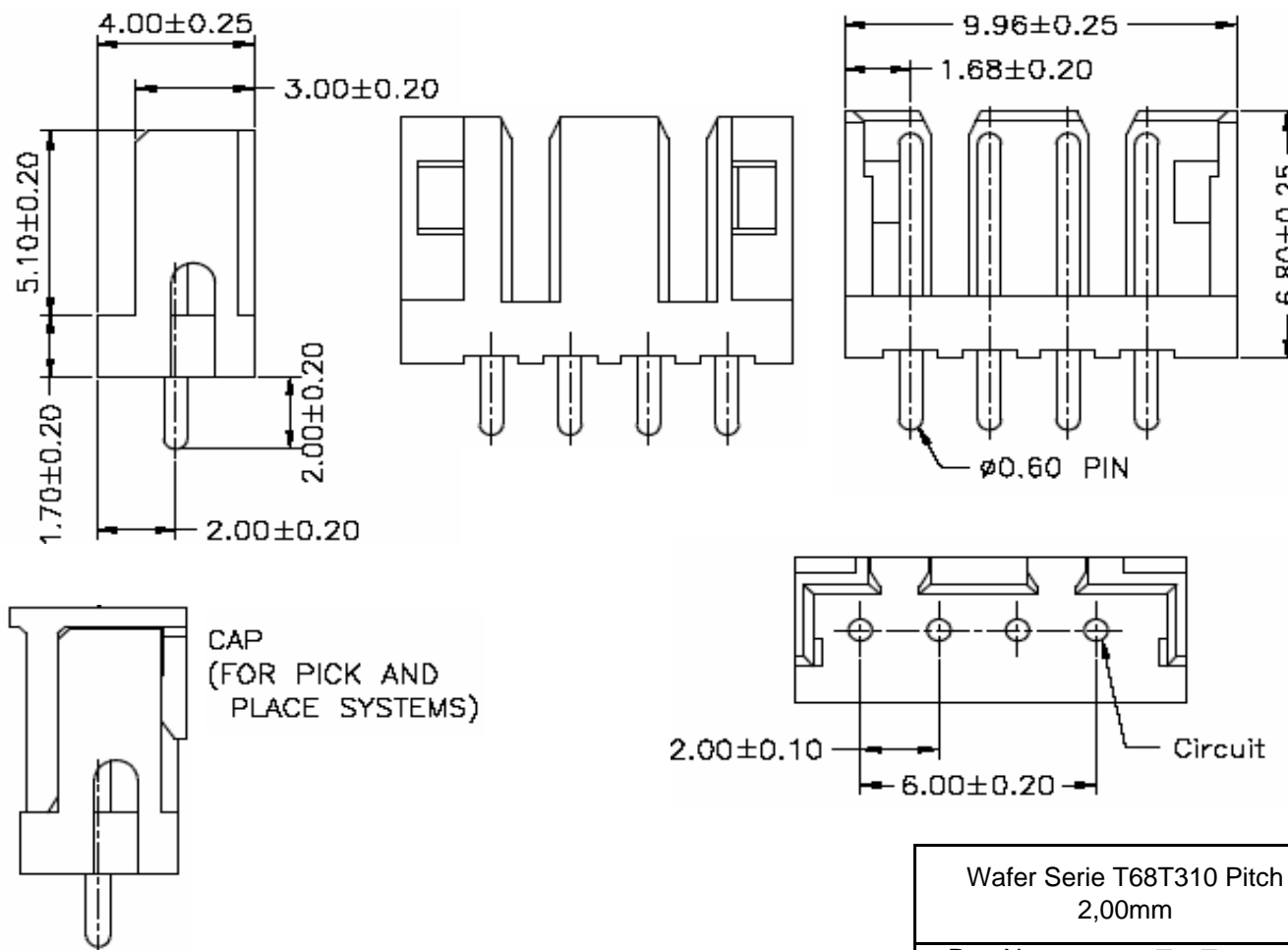
EDCON-COMPONENTS



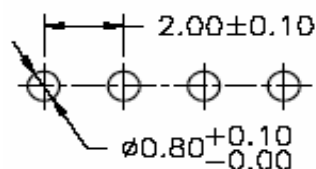
Specifications

Voltage Rating:	125 V AC/DC
Current Rating:	4A AC/DC
Operating Temperature:	-25°C to +85°C
Contact Resistance:	10 mΩ
Withstanding Voltage:	1000 V AC/Minute
Insulation Resistance:	1000MΩ min.
Material Housing:	Nylon 66 / UL94V-0
Color of Base:	Natural (White)
Pin-Material:	Brass / Tin plated 100~150μ

Drawing (dimensions all into mm)



P.C.B. Layout



Wafer Serie T68T310 Pitch
2,00mm

Part No.: **T68T310**

Customer:

DRW:	Jason	CHKD	Wilson	MATL:	Wilson	TOLERANCE	Mason	DATE	20.04.2013
APPD:	Schumi			FINISH	Jamy		Sheet No.	1 from 4	



EDCON[®]
COMPONENTS
A MEMBER OF EDCON-GROUP

[illegible][illegible]

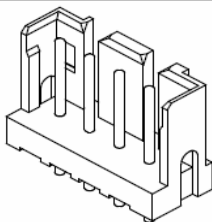
Customer:

DRW:	Jason	CHKD	Wilson	MATL:	Wilson	TOLERANCE	Mason	DATE	20.04.2013
APPD:	Schumi			FINISH	Jamy		Sheet No.		2 from 4

www.edcon-components.com

email: info@edcon-components.com

EDCON-COMPONENTS



Ordering Informations

Serie	Number of Pos.	Leg Function	Color of Body	Packing						
T68T310	04	N	WH	BU						
	04 = Pos.	N= without King	WH= White	BU= Bulk Ware						

Wafer Serie T68T310 Pitch
2,00mm

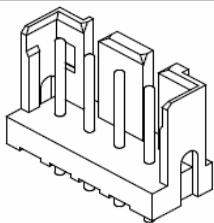
Part No.: **T68T310**

DRW:	Jason	CHKD	Wilson	MATL:	Wilson	TOLERANCE	Mason	DATE	20.04.2013
APPD:	Schumi			FINISH	Jamy		Sheet No.		3 from 4

Customer:

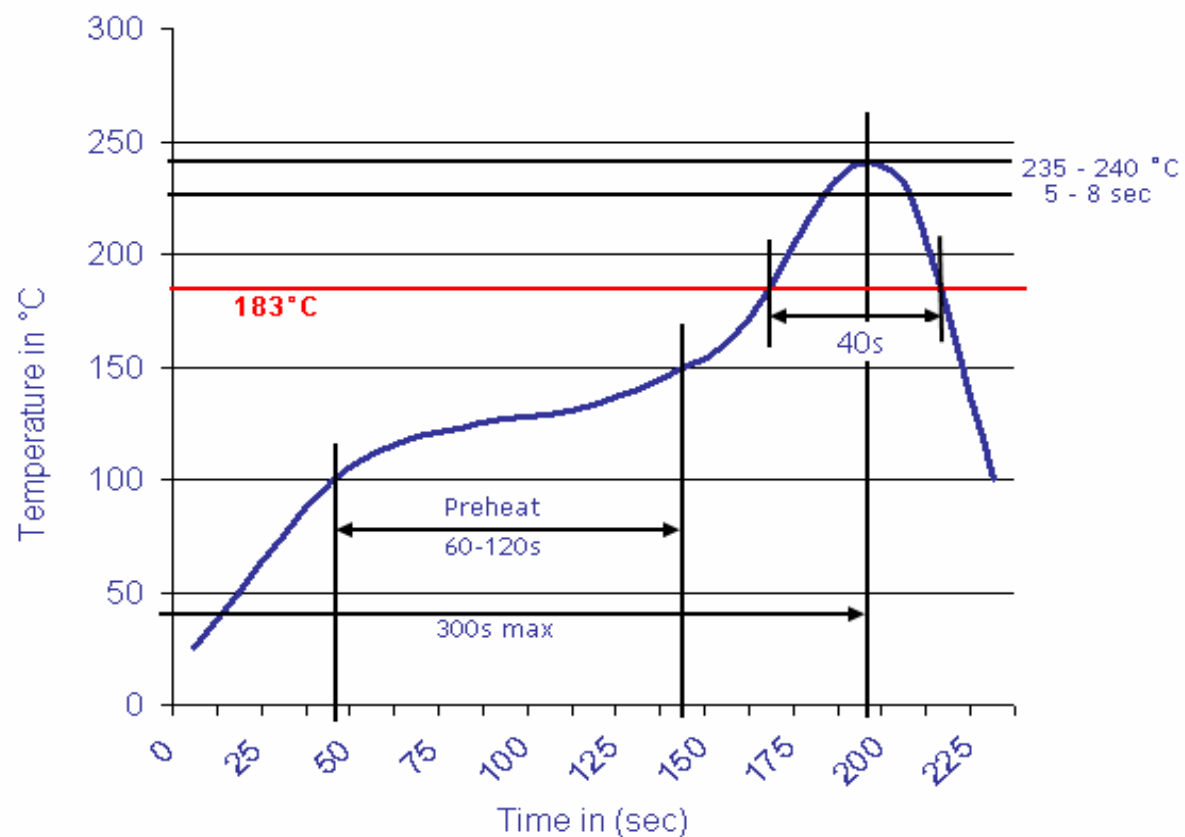
www.edcon-components.com

email: info@edcon-components.com



Soldering Profile Curve

Classification Reflow Profile (JEDEC J-STD-020C)


 Wafer Serie T68T310 Pitch
 2,00mm

 Part No.: **T68T310**

Customer:

DRW:	Jason	CHKD	Wilson	MATL:	Wilson	TOLERANCE	Mason	DATE	20.04.2013
APPD:	Schumi			FINISH	Jamy		Sheet No.	4 from 4	