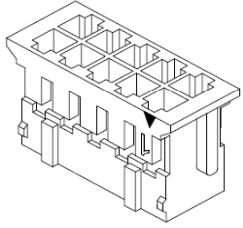


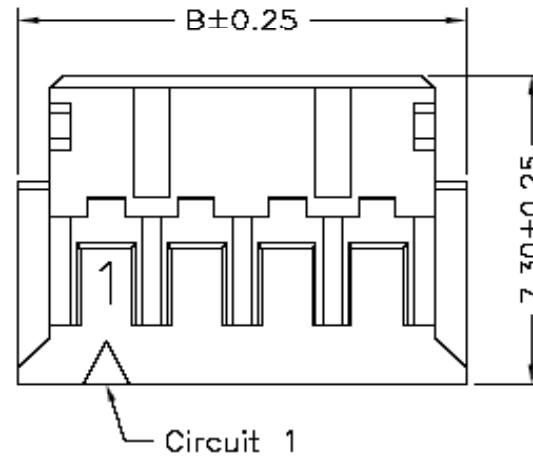
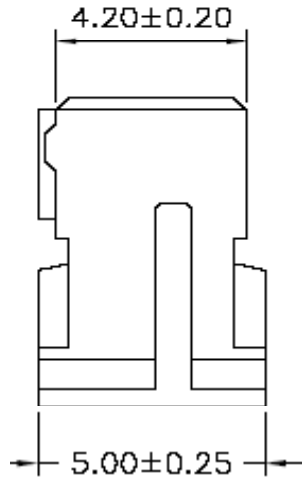
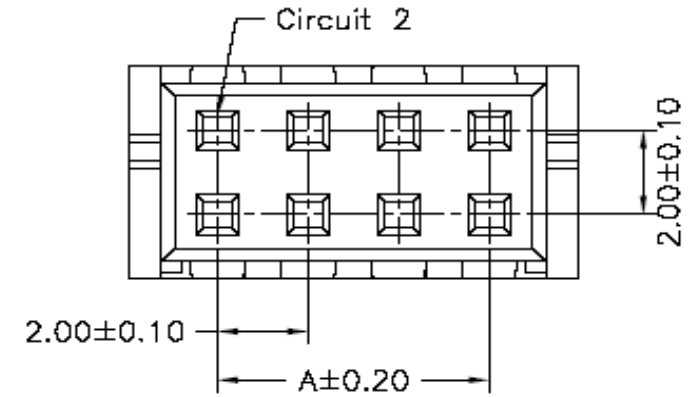
EDCON-COMPONENTS



Specifications

Voltage Rating:	250 V AC/DC
Current Rating:	3A AC/DC
Operating Temperature:	-25°C to + 85°C
Contact Resistance:	10 mΩ
Withstanding Voltage:	800 V AC/Minute
Insulation Resistance:	1000MΩ min.
Material Housing:	Nylon 66 / UL94V-0
Color:	Natural / (White)

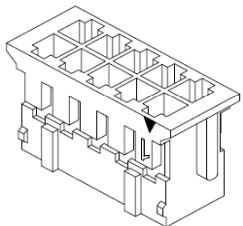
Drawing (dimensions all into mm)



Housing Serie T68Txxxx Pitch 2,00mm	
Part No.:	T68T306-
Customer:	

DRW:	Jason	CHKD	Wilson	MATL:	Wilson	TOLERANCE	Mason	DATE	02.04.2009
APPD:	Schumi			FINISH	Jamy		Sheet No.		1 from 3

EDCON-COMPONENTS



Dimension Information about Housing

Pos.	Dimension (mm)					
	A	B	C	D	E	F
04 (2x02)	2,00	5,90				
06 (2x03)	4,00	7,90				
08 (2x04)	6,00	9,90				
10 (2x05)	8,00	11,90				
12 (2x06)	10,00	13,90				
14 (2x07)	12,00	15,90				
16 (2x08)	14,00	17,90				
18 (2x09)	16,00	19,90				
20 (2x10)	18,00	21,90				
22 (2x11)	20,00	23,90				
24 (2x12)	22,00	25,90				
26 (2x13)	24,00	27,90				
28 (2x14)	26,00	29,90				
30 (2x15)	28,00	31,90				
32 (2x16)	30,00	33,90				
34 (2x17)	32,00	35,90				
36 (2x18)	34,00	37,90				
38 (2x19)	36,00	39,90				
40 (2x20)	38,00	41,90				
42 (2x21)	42,00	45,90				
44 (2x22)	46,00	49,90				
46 (2x23)	50,00	53,90				
48 (2x24)	54,00	57,90				
50 (2x25)	58,00	61,90				

Pos.	Dimension (mm)					
	A	B	C	D	E	F

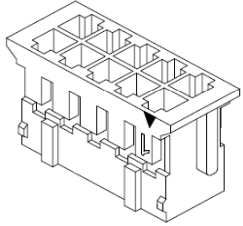
Housing Serie T68Txxxx Pitch 2,00mm
Part No.: T68T306-
Customer:

DRW:	Jason	CHKD	Wilson	MATL:	Wilson	TOLERANCE	Mason	DATE	02.04.2009
APPD:	Schumi			FINISH	Jamy		Sheet No.		2 from 3

www.edcon-components.com

email: info@edcon-components.com

EDCON-COMPONENTS



Ordering Informations

Serie	Number of Pos.	Color of Body	Packing							
-------	----------------	---------------	---------	--	--	--	--	--	--	--

T68T306-	04	WH	BU							
-----------------	-----------	-----------	-----------	--	--	--	--	--	--	--

xx = Pos.	WH= White	BU= Bulk Packing								
	BK= Black									

Housing Serie T68Txxxx Pitch 2,00mm
Part No.: T68T306-
Customer:

DRW:	Jason	CHKD	Wilson	MATL:	Wilson	TOLERANCE	Mason	DATE	02.04.2009
APPD:	Schumi			FINISH	Jamy		Sheet No.		3 from 3