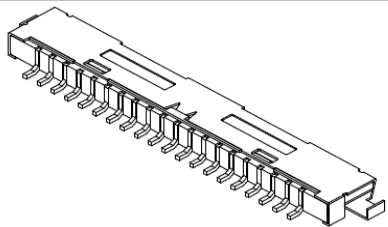


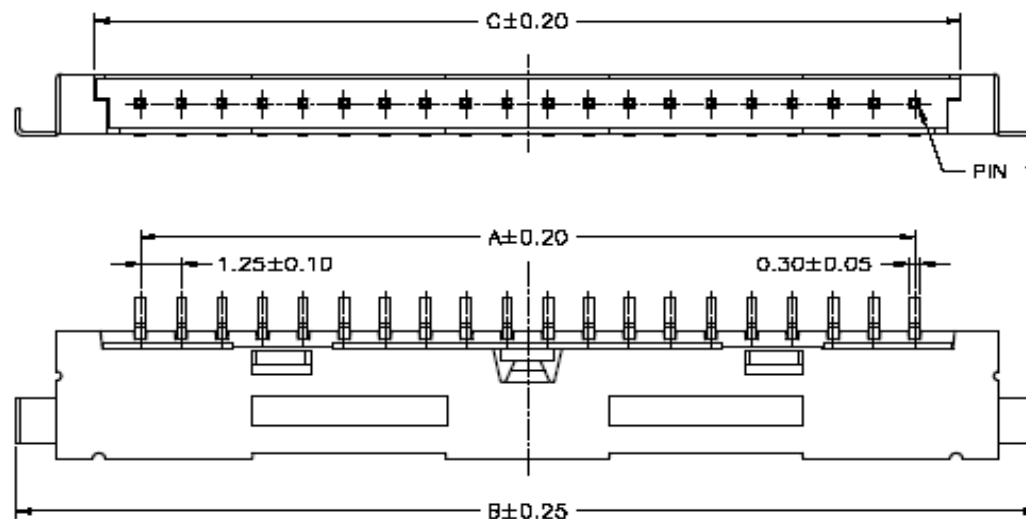
EDCON-COMPONENTS



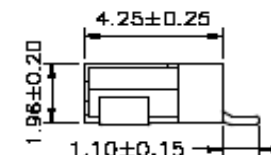
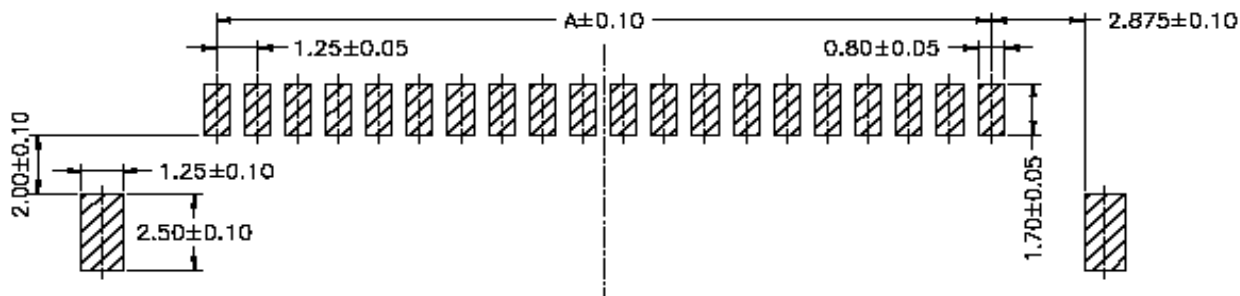
Specifications

Voltage Rating:	200 V AC/DC
Current Rating:	1A AC/DC
Operating Temperature:	-25°C to + 85°C
Contact Resistance:	40 mΩ
Withstanding Voltage:	500 V AC/Minute
Insulation Resistance:	100MΩ min.
Material Housing:	Nylon 6T / UL94V-0
Color:	Natural (Beige)
Pin-Material:	Bronze /Gold-Flash 3μ
Solder Tabs:	Bronze /Gold-Flash
Pic and Place Cap	6T UL94V-0

Drawing (dimensions all into mm)



P.C.B. Layout



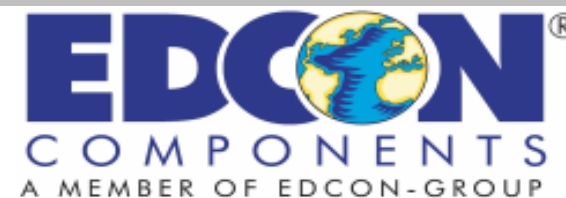
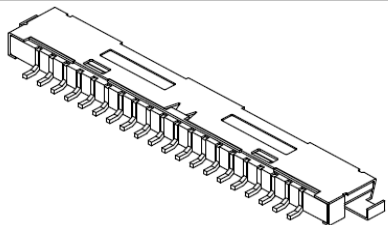
Wafer Serie T68Sxxxx Pitch
1,25mm

Part No.: **T68S056**

DRW:	Jason	CHKD	Wilson	MATL:	Wilson	TOLERANCE	Mason	DATE	02.04.2009
APPD:	Schumi			FINISH	Jamy		Sheet No.	1 from 4	Customer:

www.edcon-components.com

email: info@edcon-components.com



Dimension Information about Housing

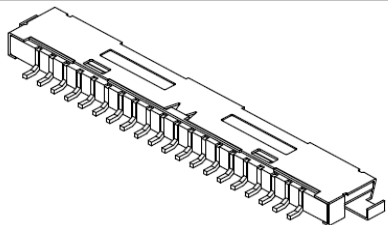
	Dimension (mm)					
Pos.	A	B	C	D	E	F
20	23,75	31,40	26,60			
30	36,25	43,90	39,10			

	Dimension (mm)					
Pos.	A	B	C	D	E	F

Wafer Serie T68Sxxxx Pitch 1,25mm
Part No.: T68S056
Customer:

DRW:	Jason	CHKD	Wilson	MATL:	Wilson	TOLERANCE	Mason	DATE	02.04.2009
APPD:	Schumi			FINISH	Jamy		Sheet No.	2 from 4	

EDCON-COMPONENTS



Ordering Informations

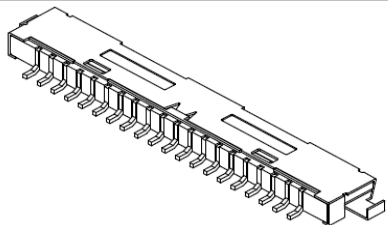
Serie	Number of Pos.	Color of Body	Packing							
-------	----------------	---------------	---------	--	--	--	--	--	--	--

T68S056	20	NA	TU							
----------------	-----------	-----------	-----------	--	--	--	--	--	--	--

xx = Pos.	NA= Natural	TU= Tube Packing								
	BG= Beige	TR= Tape / Reel Packing								

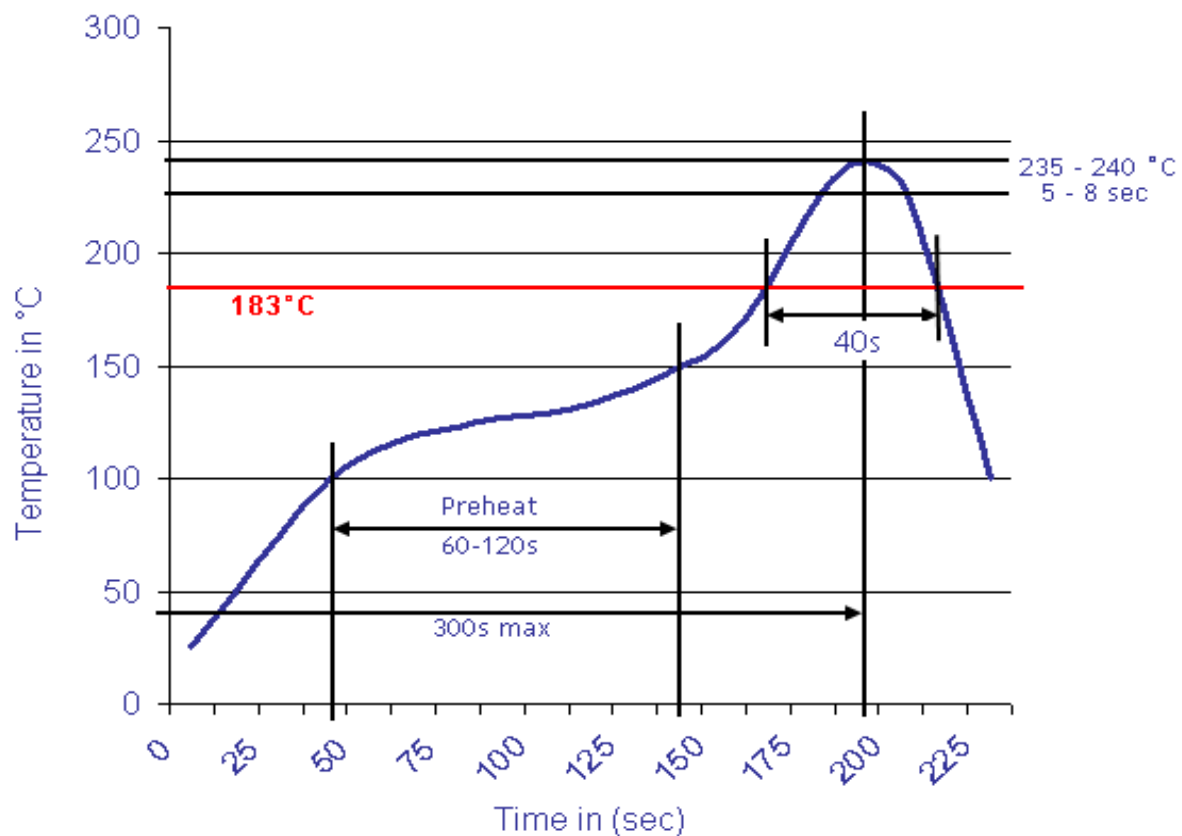
Wafer Serie T68Sxxxx Pitch 1,25mm
Part No.: T68S056
Customer:

DRW:	Jason	CHKD	Wilson	MATL:	Wilson	TOLERANCE	Mason	DATE	02.04.2009
APPD:	Schumi			FINISH	Jamy		Sheet No.		3 from 4



Soldering Profile Curve

Classification Reflow Profile (JEDEC J-STD-020C)



Wafer Serie T68Sxxxx Pitch
1,25mm

Part No.: **T68S056**

DRW:	Jason	CHKD	Wilson	MATL:	Wilson	TOLERANCE	Mason	DATE	02.04.2009	Customer:
APPD:	Schumi			FINISH	Jamy		Sheet No.	4 from 4		