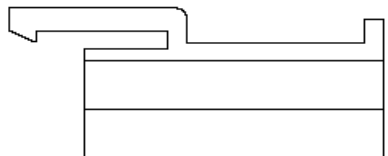


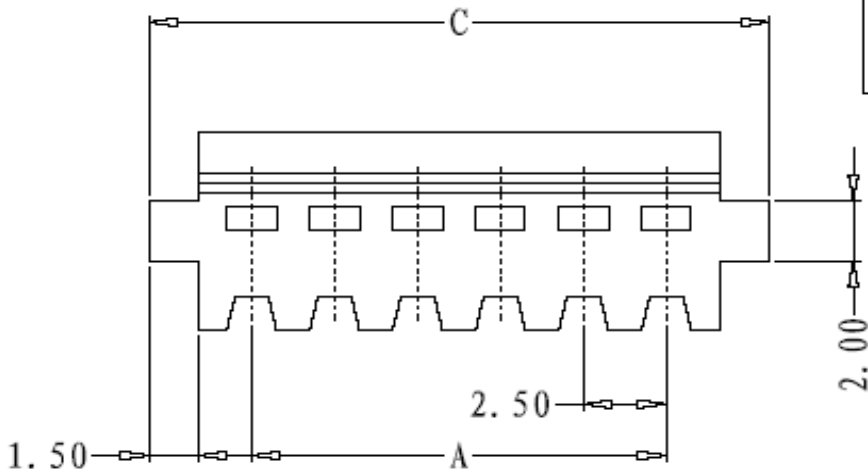
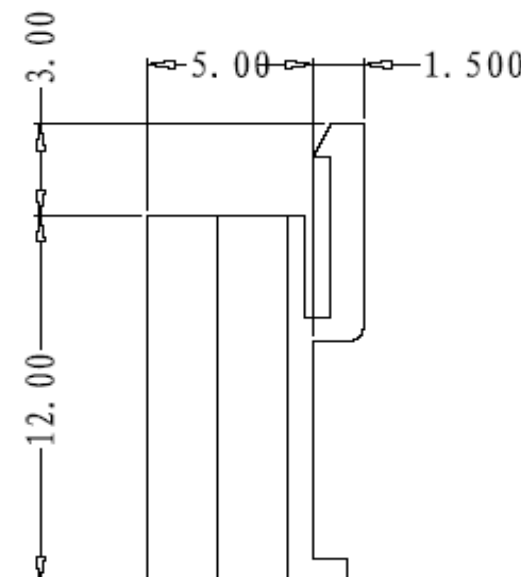
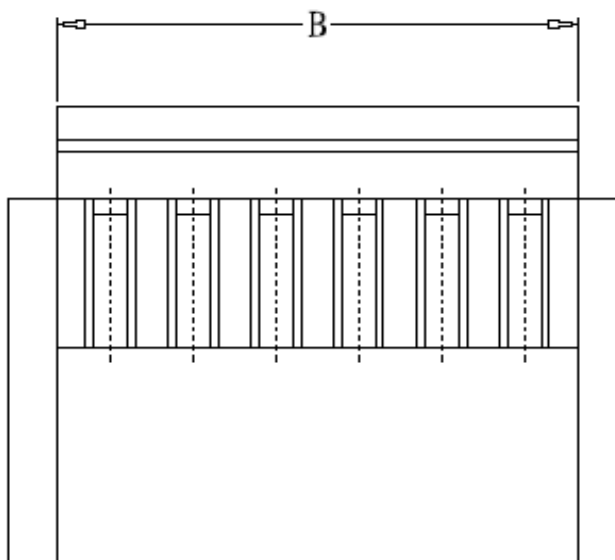
EDCON-COMPONENTS



Specifications

Voltage Rating: 250 V AC/DC
 Current Rating: 3A AC/DC
 Operating Temperature: -25°C to + 85°C
 Contact Resistance: 10 mΩ
 Withstanding Voltage: 1500 V AC/Minute
 Insulation Resistance: 500MΩ min.
 Material Housing: Nylon 66 / UL94V-0

Drawing (dimensions all into mm)



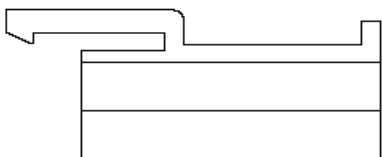
| | |
|------------------------------------|----------------|
| Housing Serie T68Pxxx Pitch 2,50mm | |
| Part No.: | T68P064 |
| Customer: | |

| | | | | | | | | | |
|-------|--------|------|--------|--------|--------|-----------|-----------|----------|------------|
| DRW: | Jason | CHKD | Wilson | MATL: | Wilson | TOLERANCE | Mason | DATE | 26.05.2011 |
| APPD: | Schumi | | | FINISH | Jamy | | Sheet No. | 1 from 3 | |

www.edcon-components.com

email: info@edcon-components.com

EDCON-COMPONENTS



Ordering Informations

| Serie | Number of Pos. | Color of Body | ROHS | Packing | | | | | | |
|------------------|------------------|----------------------------|----------------------|-----------|--|--|--|--|--|--|
| T68P064 | 02 | WH | R | BU | | | | | | |
| xx = Pos. | WH= White | R= Rohs Conform | BU= Bulk Ware | | | | | | | |
| | | N= NON Rohs Conform | | | | | | | | |

Housing Serie T68Pxxx Pitch 2,50mm

Part No.: **T68P064**

| | | | | | | | | | |
|-------|--------|------|--------|--------|--------|-----------|-----------|------|------------|
| DRW: | Jason | CHKD | Wilson | MATL: | Wilson | TOLERANCE | Mason | DATE | 26.05.2011 |
| APPD: | Schumi | | | FINISH | Jamy | | Sheet No. | | 3 from 3 |

Customer: