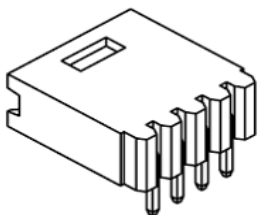


EDCON-COMPONENTS

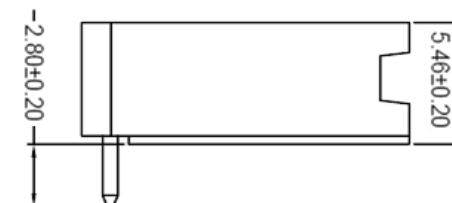
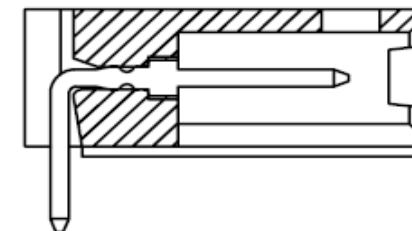
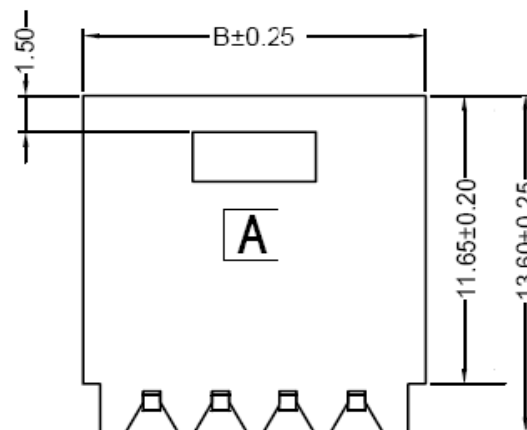


Specifications

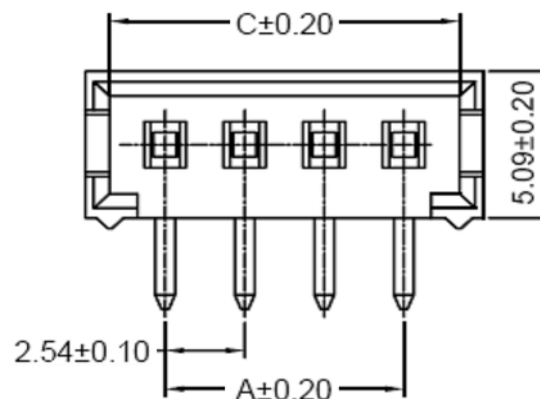
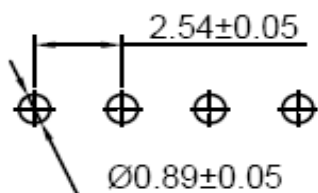
Voltage Rating: 250 V AC/DC
 Current Rating: 3A AC/DC
 Operating Temperature: -25°C to +85°C
 Contact Resistance: 20 mΩ
 Withstanding Voltage: 1500 V AC/Minute
 Insulation Resistance: 1000MΩ min.
 Material Housing: PBT30% GF / UL94V-0

Pin-Material: Brass / Gold-flash
 Color of Base: Natural (Black)

Drawing (dimensions all into mm)



P.C.B. Layout



Wafer Serie T68N297 Pitch
2,54mm

Part No.: **T68N297-**

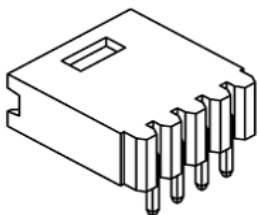
Customer:

DRW:	Jason	CHKD	Wilson	MATL:	Wilson	TOLERANCE	Mason	DATE	10.03.2016
APPD:	Schumi			FINISH	Jamy		Sheet No.		1 from 4

www.edcon-components.com

email: info@edcon-components.com

EDCON-COMPONENTS



Ordering Informations

Serie	Number of Pos.	Contact Plating	Color of Body	Packing						
-------	----------------	-----------------	---------------	---------	--	--	--	--	--	--

T68N297-	02	GF	BK	BU						
-----------------	-----------	-----------	-----------	-----------	--	--	--	--	--	--

xx = Pos.	TN= Tinned	BK= Black	BU= Bulk Ware							
	GF= Gold Flash (standard)		IV= Individual Packing							
	Gx = Other Contact Plating on request									

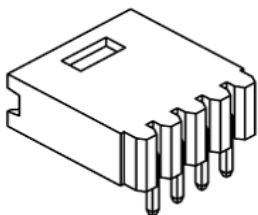
Wafer Serie T68N297 Pitch 2,54mm

Part No.: **T68N297-**

DRW:	Jason	CHKD	Wilson	MATL:	Wilson	TOLERANCE	Mason	DATE	10.03.2016	Customer:
APPD:	Schumi			FINISH	Jamy		Sheet No.	3 from 4		

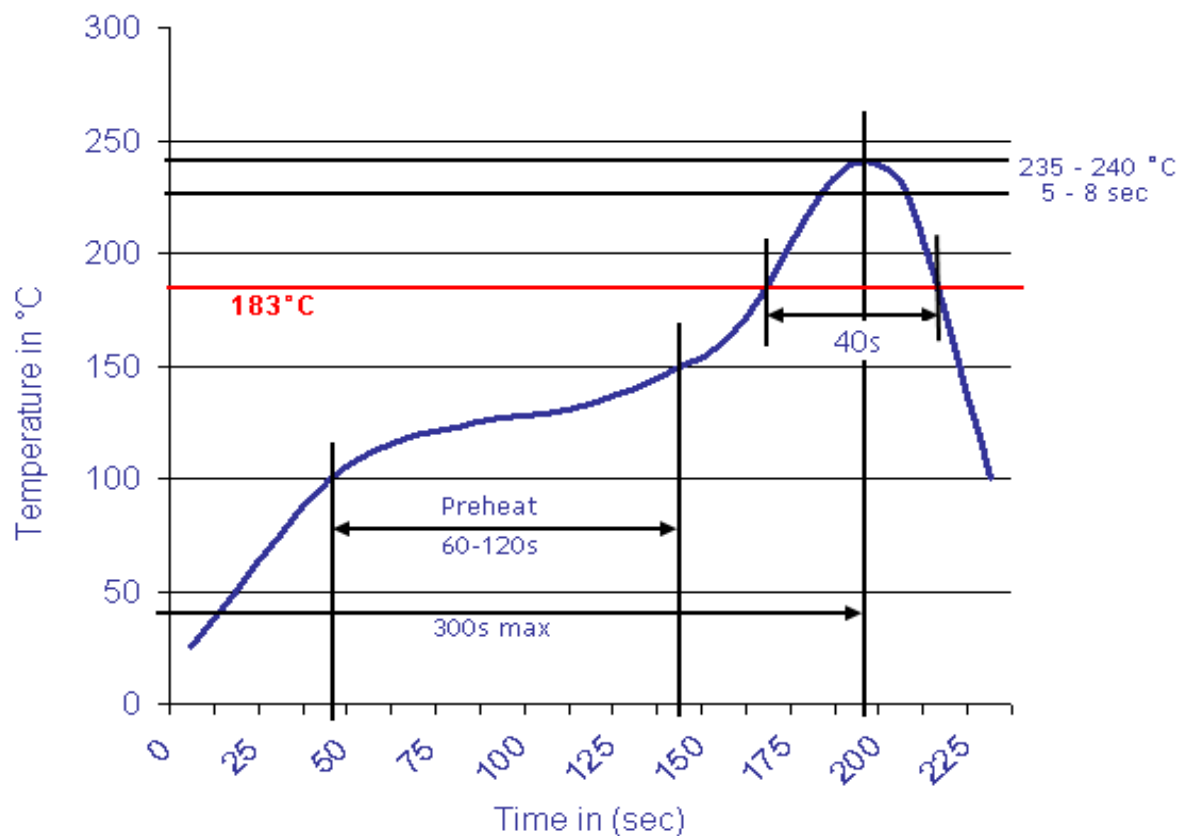
www.edcon-components.com

email: info@edcon-components.com



Soldering Profile Curve

Classification Reflow Profile (JEDEC J-STD-020C)



Wafer Serie T68N297 Pitch
2,54mm

Part No.: **T68N297-**

DRW:	Jason	CHKD	Wilson	MATL:	Wilson	TOLERANCE	Mason	DATE	10.03.2016
APPD:	Schumi			FINISH	Jamy		Sheet No.	4 from 4	Customer: