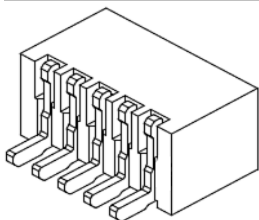


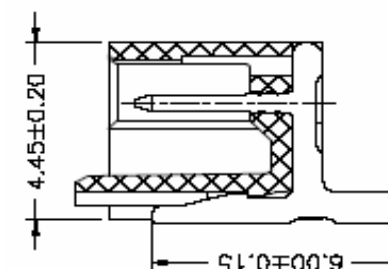
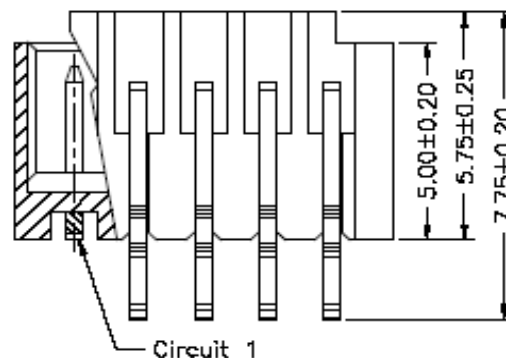
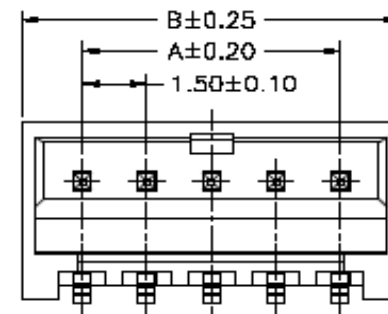
EDCON-COMPONENTS



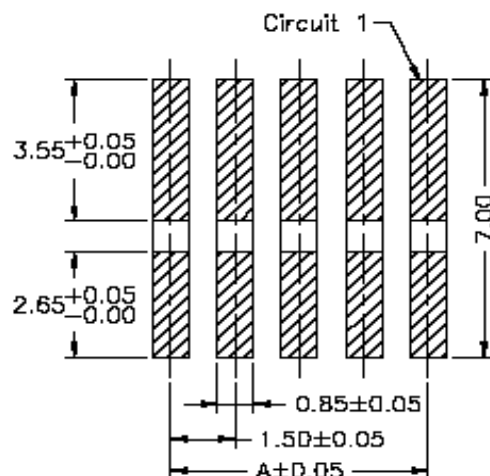
Specifications

Voltage Rating:	350 V AC/DC
Current Rating:	3A AC/DC
Operating Temperature:	-25°C to +85°C
Contact Resistance:	20 mΩ
Withstanding Voltage:	500 V AC/Minute
Insulation Resistance:	1000MΩ min.
Material Housing:	Nylon 6T / UL94V-0
Pin-Material:	Brass /Tin-plated
Color:	Natural / (Beige)

Drawing (dimensions all into mm)



P.C.B. Layout



Wafer Serie T68Sxxxx Pitch
1,50mm

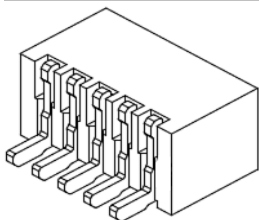
Part No.: **T68K015**

DRW:	Jason	CHKD	Wilson	MATL:	Wilson	TOLERANCE	Mason	DATE	02.04.2009
APPD:	Schumi			FINISH	Jamy		Sheet No.	1 from 4	Customer:

www.edcon-components.com

email: info@edcon-components.com

EDCON-COMPONENTS



Ordering Informations

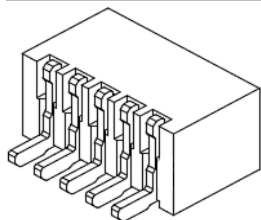
Serie	Number of Pos.	Color of Body	Packing							
-------	----------------	---------------	---------	--	--	--	--	--	--	--

T68K015	02	BG	TU							
----------------	-----------	-----------	-----------	--	--	--	--	--	--	--

xx = Pos.	BG= Beige	TU= Tube Packing								
	NA= Natural	TR= Tape / Reel Packing								

Wafer Serie T68Sxxxx Pitch 1,50mm
Part No.: T68K015
Customer:

DRW:	Jason	CHKD	Wilson	MATL:	Wilson	TOLERANCE	Mason	DATE	02.04.2009
APPD:	Schumi			FINISH	Jamy			Sheet No.	3 from 4



Soldering Profile Curve

Classification Reflow Profile (JEDEC J-STD-020C)



Wafer Serie T68Sxxxx Pitch
1,50mm

Part No.: **T68K015**

DRW:	Jason	CHKD	Wilson	MATL:	Wilson	TOLERANCE	Mason	DATE	02.04.2009
APPD:	Schumi			FINISH	Jamy		Sheet No.	4 from 4	Customer: