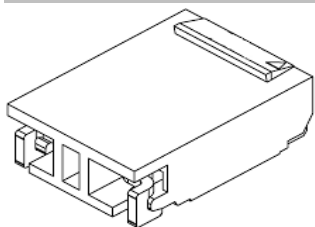


EDCON-COMPONENTS

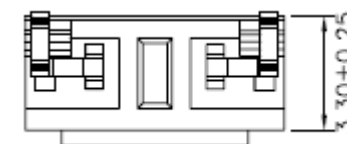
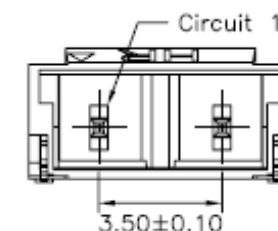
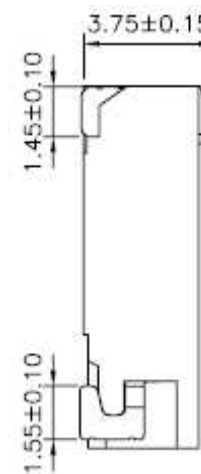
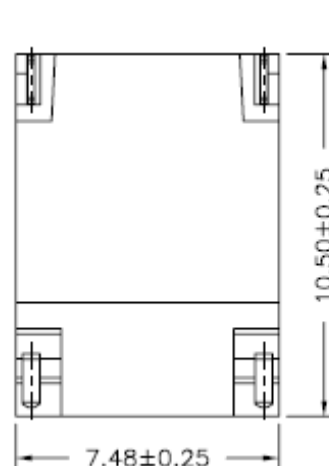
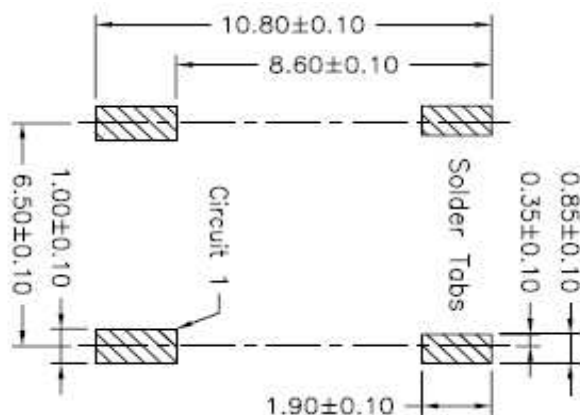


Specifications

Voltage Rating:	1400 V AC/DC
Current Rating:	1A AC/DC
Operating Temperature:	-25°C to +85°C
Contact Resistance:	10 mΩ
Withstanding Voltage:	3800 V AC/Minute
Insulation Resistance:	1500MΩ min.
Material Housing:	Nylon 66 / UL94V-0
Pin-Material:	Brass /Tin-plated
Body Color:	Natural (Beige)

Drawing (dimensions all into mm)

P.C.B. Layout



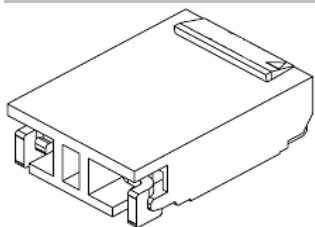
Wafer Serie T68Jxxxx Pitch
3,96mm

Part No.: **T68H003**

Customer:

DRW:	Jason	CHKD	Wilson	MATL:	Wilson	TOLERANCE	Mason	DATE	02.04.2009
APPD:	Schumi			FINISH	Jamy		Sheet No.	1 from 4	

EDCON-COMPONENTS



Ordering Informations

Serie	Number of Pos.	Leg function	Color of Body	Packing						
-------	----------------	--------------	---------------	---------	--	--	--	--	--	--

T68H003	02	N	BG	BU						
----------------	-----------	----------	-----------	-----------	--	--	--	--	--	--

xx = Pos.	N= without King	BG= Beige	BU= Bulk - Ware						

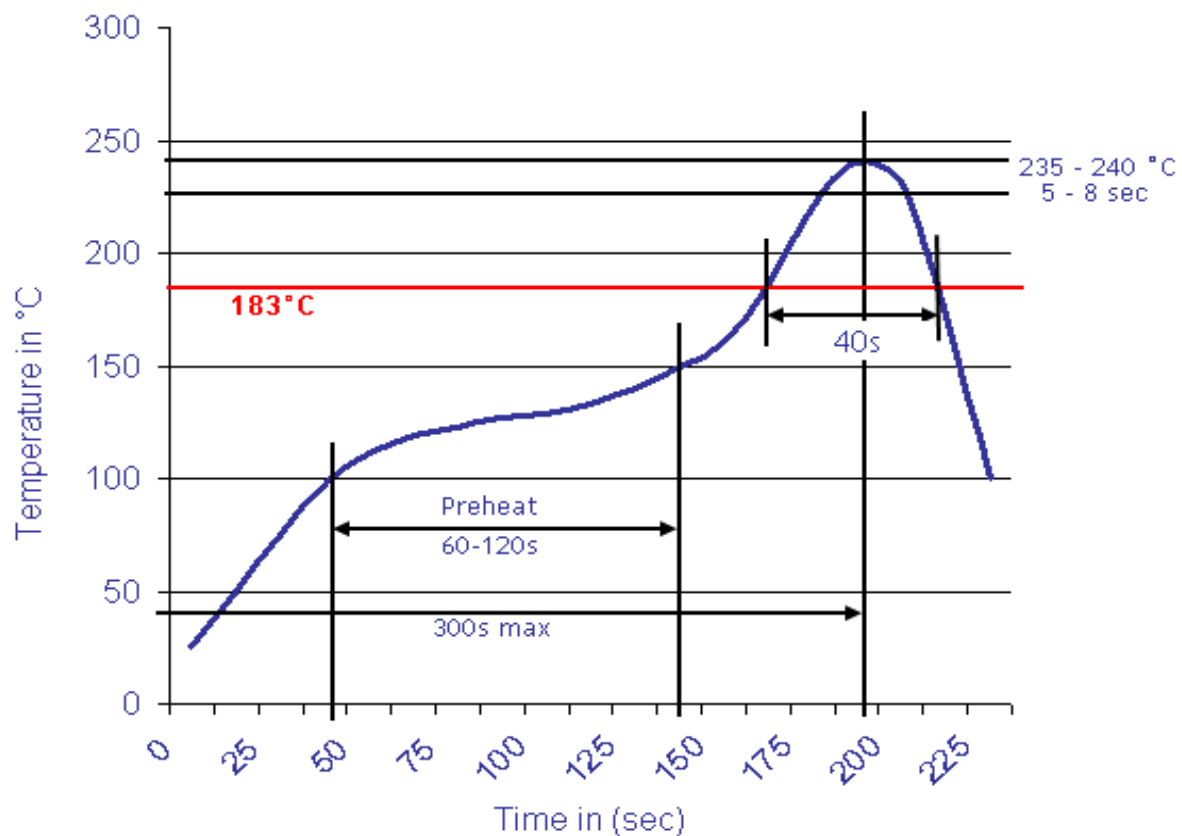
Wafer Serie T68Jxxxx Pitch 3,96mm
Part No.: T68H003
Customer:

DRW:	Jason	CHKD	Wilson	MATL:	Wilson	TOLERANCE	Mason	DATE	02.04.2009
APPD:	Schumi			FINISH	Jamy		Sheet No.		3 from 4



Soldering Profile Curve

Classification Reflow Profile (JEDEC J-STD-020C)



Wafer Serie T68Jxxxx Pitch 3,96mm
Part No.: T68H003
Customer:

DRW:	Jason	CHKD	Wilson	MATL:	Wilson	TOLERANCE	Mason	DATE	02.04.2009
APPD:	Schumi			FINISH	Jamy		Sheet No.	4 from 4	