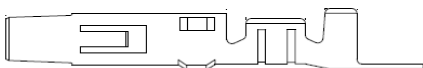


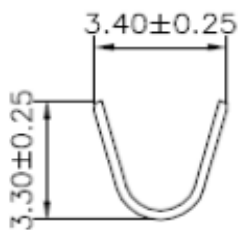
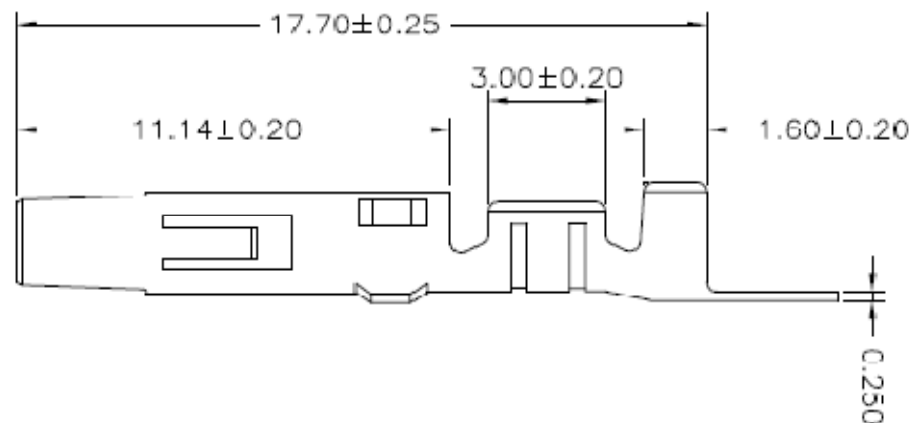
EDCON-COMPONENTS



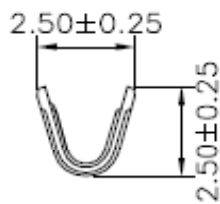
Specifications

Voltage Rating:	250VAC / DC
Current Rating:	10A AC/DC
Operating Temperature:	-.25°C to + 85°C
Contact Resistance:	10mΩ Max.
Withstanding Voltage:	1500V AC/ Minute
Insulation Resistance:	1000MΩ min.

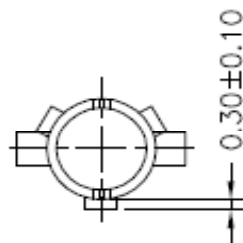
Drawing (dimensions all into mm)



SEC:A-A



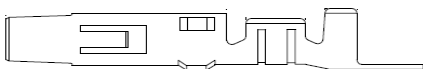
SEC:B-B



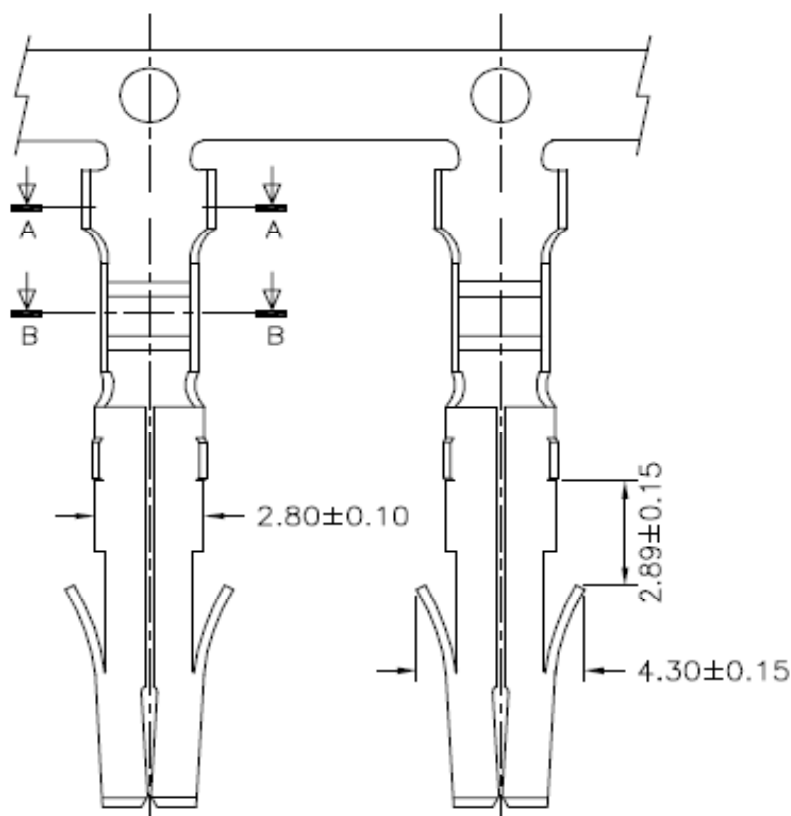
**Female-Terminal f. Housing
T68D008 P=5,08mm**

Part No.: **T68D009-**

DRW:	Jason	CHKD	Wilson	MATL:	Wilson	TOLERANCE	Mason	DATE	10.04.2017	Customer:
APPD:	Schumi			FINISH	Jamy		Sheet No.	1 from 3		



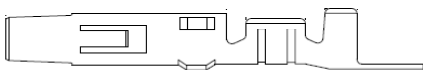
Drawing



Female-Terminal f. Housing	
T68D008 P=5,08mm	
Part No.:	T68D009-
Customer:	

DRW:	Jason	CHKD	Wilson	MATL:	Wilson	TOLERANCE	Mason	DATE	10.04.2017
APPD:	Schumi			FINISH	Jamy		Sheet No.	2 from 3	

EDCON-COMPONENTS



Ordering Informations

Serie	AWG-Size	Contact Plating	Special function	ROHS	Packing					
-------	----------	-----------------	------------------	------	---------	--	--	--	--	--

T68D009-	A	TN	N	R	TR					
-----------------	----------	-----------	----------	----------	-----------	--	--	--	--	--

A = AWG18~24	TN= Tinned	N= No Special function	R= ROHS Conform	TR= Tape/Reel						
			N= NON ROHS Conform	IV= Individual Packing						

**Female-Terminal f. Housing
T68D008 P=5,08mm**

Part No.: **T68D009-**

DRW:	Jason	CHKD	Wilson	MATL:	Wilson	TOLERANCE	Mason	DATE	10.04.2017
APPD:	Schumi			FINISH	Jamy		Sheet No.		3 from 3

Customer: