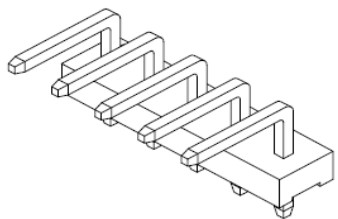


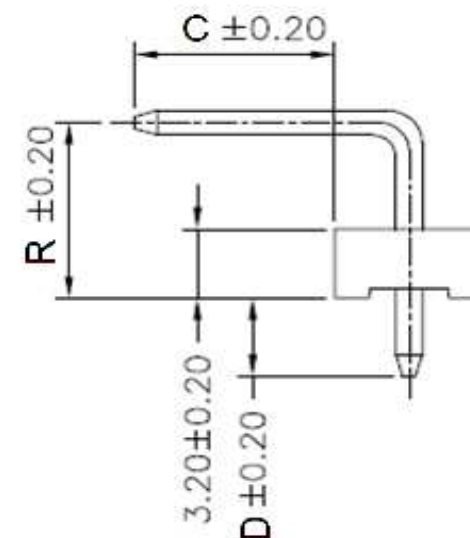
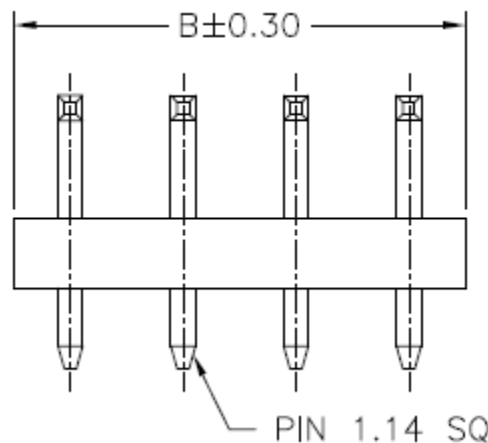
EDCON-COMPONENTS



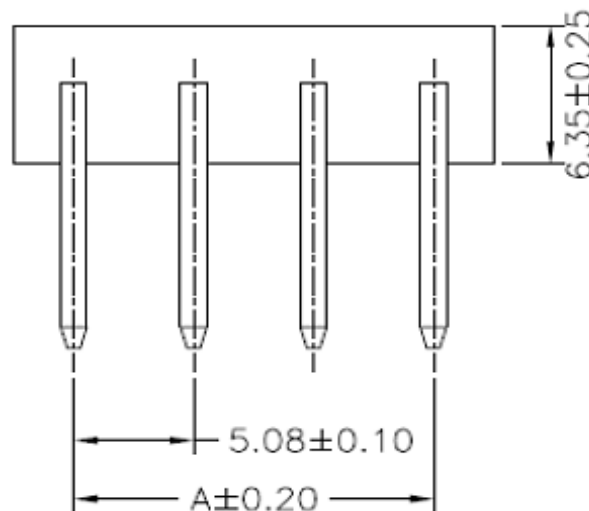
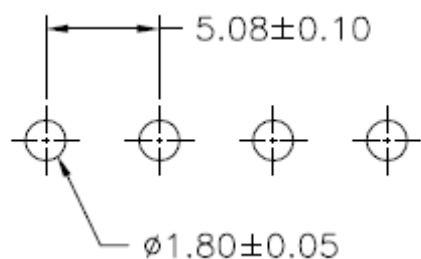
Specifications

Voltage Rating:	250 V AC/DC
Current Rating:	7A AC/DC
Operating Temperature:	-25°C to + 85°C
Contact Resistance:	10 mΩ
Withstanding Voltage:	1500 V AC/Minute
Insulation Resistance:	1000MΩ min.
Material Housing:	Nylon 66 / UL94V-2
Pin-Material:	Brass /Tin-plated
Body Color:	Natural / White

Drawing (dimensions all into mm)



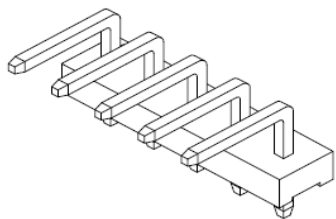
P.C.B. Layout



Wafer Serie T68Dxxxx Pitch 5,08mm	
Part No.:	T68D003
Customer:	

DRW:	Jason	CHKD	Wilson	MATL:	Wilson	TOLERANCE	Mason	DATE	14.10.2014
APPD:	Schumi			FINISH	Jamy		Sheet No.	1 from 4	

EDCON-COMPONENTS



Ordering Informations

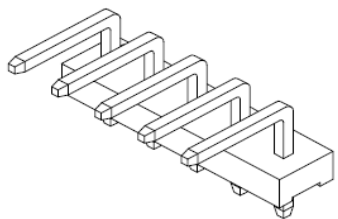
Serie	Number of Pos.	Color of Body	Packing	PIN Length Code						
-------	----------------	---------------	---------	-----------------	--	--	--	--	--	--

T68D003	02	NA	BU	A01						
----------------	-----------	-----------	-----------	------------	--	--	--	--	--	--

xx = Pos.	NA= Natural	BU= Bulk-ware	A01= Look Table Pin length							
	WH= White									

Wafer Serie T68Dxxxx Pitch 5,08mm	
Part No.:	T68D003
Customer:	

DRW:	Jason	CHKD	Wilson	MATL:	Wilson	TOLERANCE	Mason	DATE	14.10.2014
APPD:	Schumi			FINISH	Jamy		Sheet No.		3 from 4



Soldering Profile Curve

Classification Reflow Profile (JEDEC J-STD-020C)



Wafer Serie T68Dxxxx Pitch
5,08mm

Part No.: **T68D003**

DRW:	Jason	CHKD	Wilson	MATL:	Wilson	TOLERANCE	Mason	DATE	14.10.2014
APPD:	Schumi			FINISH	Jamy		Sheet No.	4 from 4	Customer: