

Data Sheet

Screwless Terminal Block

Pitch: 7,50 mm

Serie: A14Q039

Customer Information for special Item

EDCON Customer : 0

Customer Version No. : 0

EDCON-COMPONENTS



Technical Discription

Drawing (Dimension in mm)

Electrical

Rated voltage 300V
Rated current 10A

Mechanical

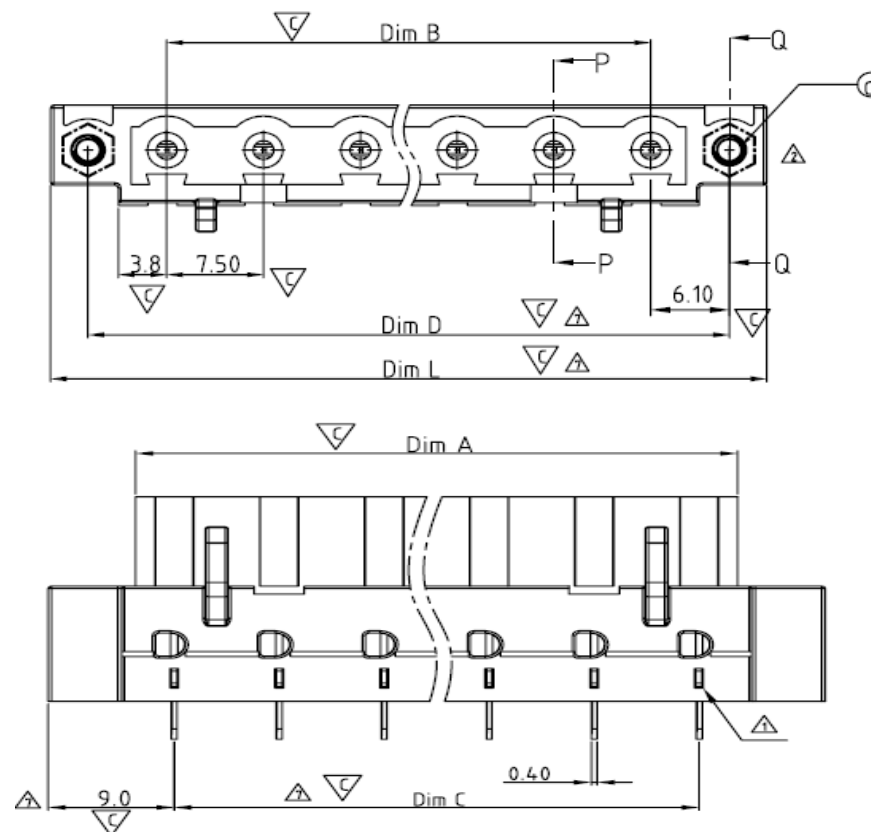
Withstanding voltage 1,6kv
Temperature range -40°C ~ 115°C

Dimensions

Pitch 7,5mm
Poles 2P - 16P

Material

Housing Thermoplastic UL94V-0
Pin header PhBz Tin Plated



Screwless Terminal Block

Part No.: **A14Q039**

Customer:

DRW:	Jason	CHKD	Wilson	MATL:	Wilson	TOLERANCE	Mason	DATE	17.02.2014
APPD:	Schumi			FINISH	Jamy		Sheet No.	1 from 4	

EDCON-COMPONENTS



Ordering Informations

Serie	No. of Pos.	Body Color	Approval	Approval Code	ROHS	Packing	EDCON Cust. No.	Customer Version		
-------	-------------	------------	----------	---------------	------	---------	-----------------	------------------	--	--

A14Q039	02	GN	N	N	R	B				
----------------	-----------	-----------	----------	----------	----------	----------	--	--	--	--

Pitch 7,50	02 = Number of Pos. Standard 2 ~ 16Pos.	GY = Gray (Standard)	N = No Approval	N = NON Approval	R = ROHS Conform	B = Standard Package	xxxxxx = Customer Number	xxx = Customer Version ??(Printing)		
---------------	---	-----------------------------	------------------------	-------------------------	-------------------------	-----------------------------	---------------------------------	--	--	--

		GN = Green	1 = Approval for Material	A = UL /UR Approval Please consult EDCON for available	N = NON ROHS Conform	I = Individual Package			
			2 = Approval for Terminal Block						
		OR = Orange		B = VDE Approval Please consult EDCON for available					
		BK = Black		C = TÜV Approval Please consult EDCON for available					

Screwless Terminal Block

Part No.: **A14Q039**

Customer:

DRW:	Jason	CHKD	Wilson	MATL:	Wilson	TOLERANCE	Mason	DATE	17.02.2014
APPD:	Schumi			FINISH	Jamy		Sheet No.		3 from 4



Soldering Profile Curve

Classification Reflow Profile (JEDEC J-STD-020C)



Screwless Terminal Block

Part No.: **A14Q039**

Customer:

DRW:	Jason	CHKD	Wilson	MATL:	Wilson	TOLERANCE	Mason	DATE	17.02.2014
APPD:	Schumi			FINISH	Jamy		Sheet No.	4 from 4	

