

Data Sheet

Screwless Terminal Block

Pitch: 5,00 mm

Serie: A11L051

Customer Information for special Item

EDCON Customer : 0

Customer Version No. : 0

EDCON-COMPONENTS



Technical Discription

Drawing (Dimension in mm)

Electrical

Rated voltage 300V
Rated current 10A

Withstanding voltage 1,6kv

Mechanical

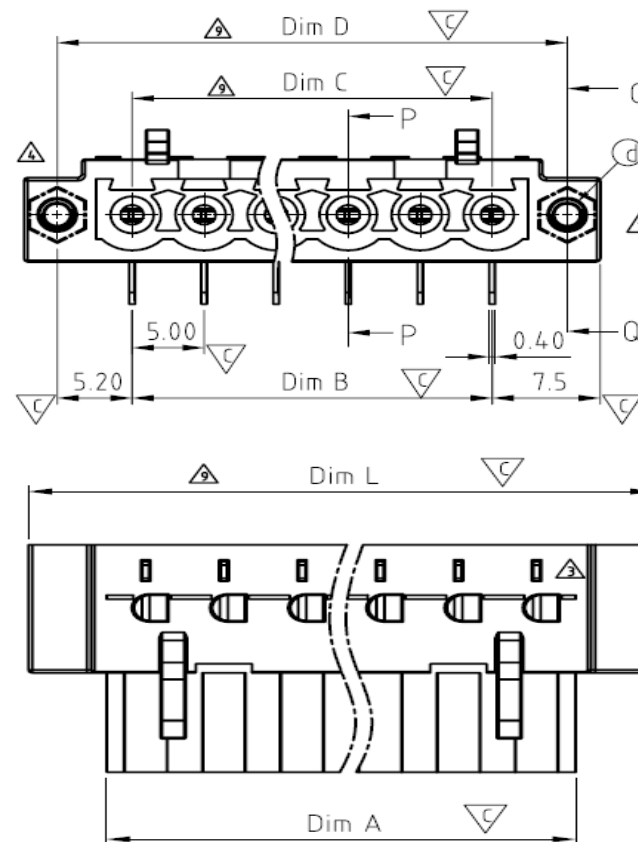
Temperature range -40°C ~ 115°C

Dimensions

Pitch 5,00mm
Poles 2P - 24P

Material

Housing Thermoplastic UL94V-0
Pin header PhBz Tin Plated



Screwless Terminal Block

Part No.: **A11L051**

Customer:

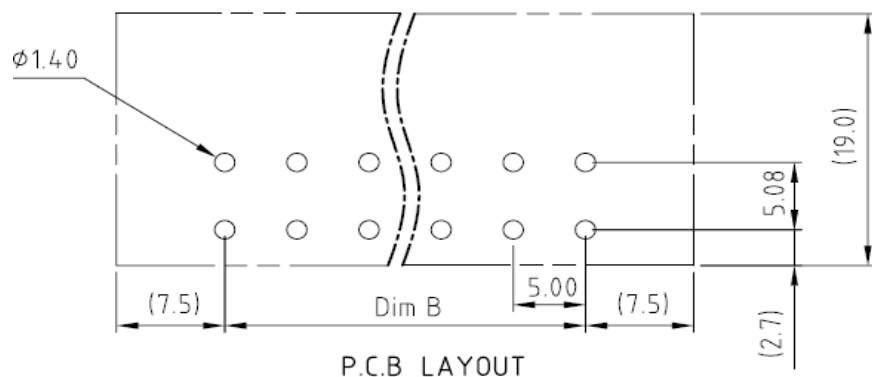
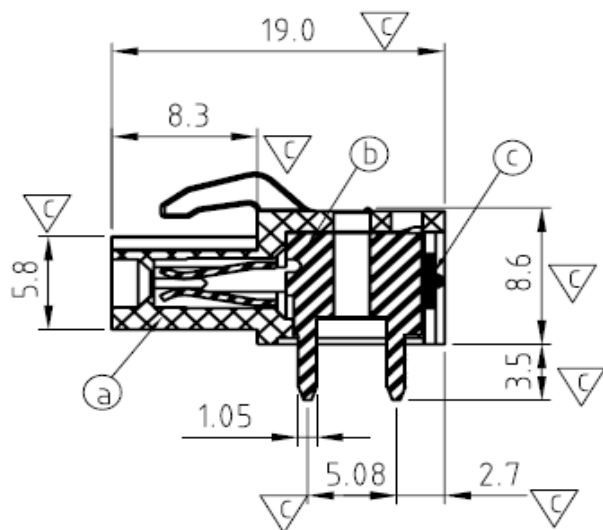
DRW:	Jason	CHKD	Wilson	MATL:	Wilson	TOLERANCE	Mason	DATE	17.02.2014
APPD:	Schumi			FINISH	Jamy		Sheet No.	1 from 4	

EDCON-COMPONENTS



Drawing (Dimension in mm)

Dimensions (mm)



No. of Pos.	A	Tol. P	B	Tol. P
02	10,00	$\pm 0,20$	5,00	$\pm 0,25$
03	15,00	$\pm 0,20$	10,00	$\pm 0,25$
04	20,00	$\pm 0,20$	15,00	$\pm 0,25$
05	25,00	$\pm 0,20$	20,00	$\pm 0,25$
06	30,00	$\pm 0,20$	25,00	$\pm 0,25$
07	35,00	$\pm 0,20$	30,00	$\pm 0,25$
08	40,00	$\pm 0,20$	35,00	$\pm 0,25$
09	45,00	$\pm 0,20$	40,00	$\pm 0,25$
10	50,00	$\pm 0,20$	45,00	$\pm 0,25$
11	55,00	$\pm 0,20$	50,00	$\pm 0,25$
12	60,00	$\pm 0,20$	55,00	$\pm 0,25$
13	65,00	$\pm 0,20$	60,00	$\pm 0,25$
14	70,00	$\pm 0,20$	65,00	$\pm 0,25$
15	75,00	$\pm 0,20$	70,00	$\pm 0,25$
16	80,00	$\pm 0,20$	75,00	$\pm 0,25$
17	85,00	$\pm 0,20$	80,00	$\pm 0,25$
18	90,00	$\pm 0,20$	85,00	$\pm 0,25$
19	95,00	$\pm 0,20$	90,00	$\pm 0,25$
20	100,00	$\pm 0,20$	95,00	$\pm 0,25$
21	105,00	$\pm 0,20$	100,00	$\pm 0,25$
22	110,00	$\pm 0,20$	105,00	$\pm 0,25$
23	115,00	$\pm 0,20$	110,00	$\pm 0,25$
24	120,00	$\pm 0,20$	115,00	$\pm 0,25$

Screwless Terminal Block

Part No.: **A11L051**

Customer:

DRW:	Jason	CHKD	Wilson	MATL:	Wilson	TOLERANCE	Mason	DATE	17.02.2014
APPD:	Schumi			FINISH	Jamy		Sheet No.		2 from 4

EDCON-COMPONENTS



Ordering Informations

Serie	No. of Pos.	Body Color	Approval	Approval Code	ROHS	Packing	EDCON Cust. No.	Customer Version		
A11L051	02	GN	N	N	R	B				

Pitch:
5,00

02= Number of Pos. Standard 2 ~ 24Pos.	GY= Gray (Standard)	N= No Approval	N= NON Approval	R= ROHS Conform	B= Standard Package	xxxxxx= Customer Number	xxx= Customer Version ??(Printing)
	GN= Green	1= Approval for Material	A= UL /UR Approval Please consult EDCON for available	N= NON ROHS Conform	I= Individual Package		
	OR= Orange	2= Approval for Terminal Block	B= VDE Approval Please consult EDCON for available				
	BK= Black		C= TÜV Approval Please consult EDCON for available				

Screwless Terminal Block

Part No.: **A11L051**

DRW:	Jason	CHKD	Wilson	MATL:	Wilson	TOLERANCE	Mason	DATE	17.02.2014
APPD:	Schumi			FINISH	Jamy		Sheet No.		3 from 4

Customer:



Soldering Profile Curve

Classification Reflow Profile (JEDEC J-STD-020C)



Screwless Terminal Block

Part No.: **A11L051**

Customer:

DRW:	Jason	CHKD	Wilson	MATL:	Wilson	TOLERANCE	Mason	DATE	17.02.2014
APPD:	Schumi			FINISH	Jamy		Sheet No.	4 from 4	

